

FRAME-SLIDING WINDOW  
SCALE - 1:10

Scale: 1:25 All dimensions in mm

N

Handwritten signature and date: 26/03/2022

Handwritten text: Jogroki Sani 14/03/22

Handwritten number: 7/10

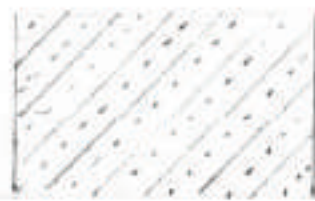




BRICK MASONRY



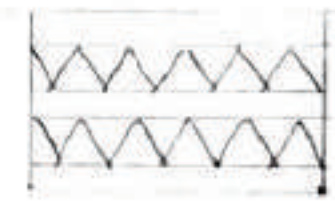
PCC/RCC



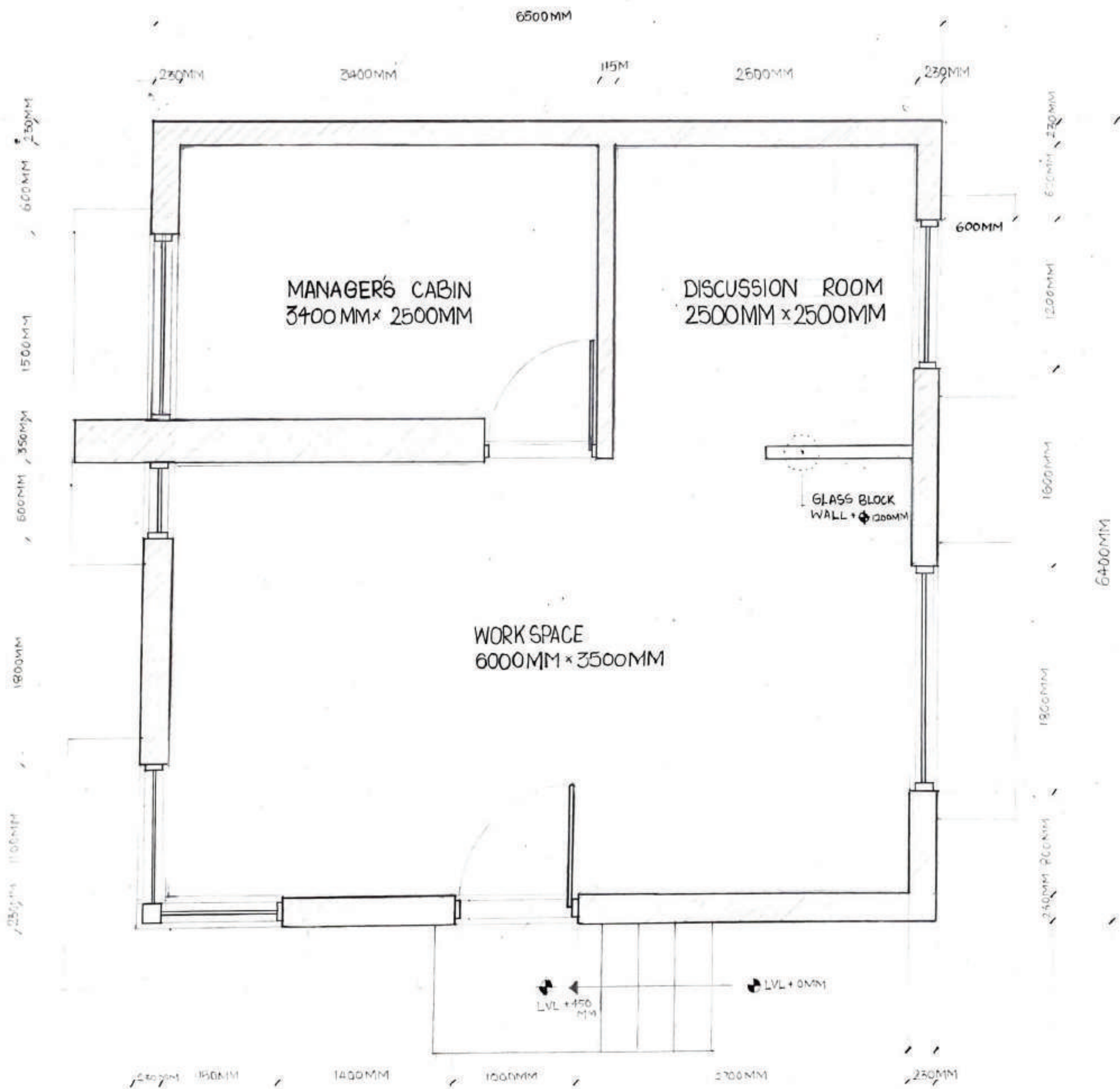
STONE



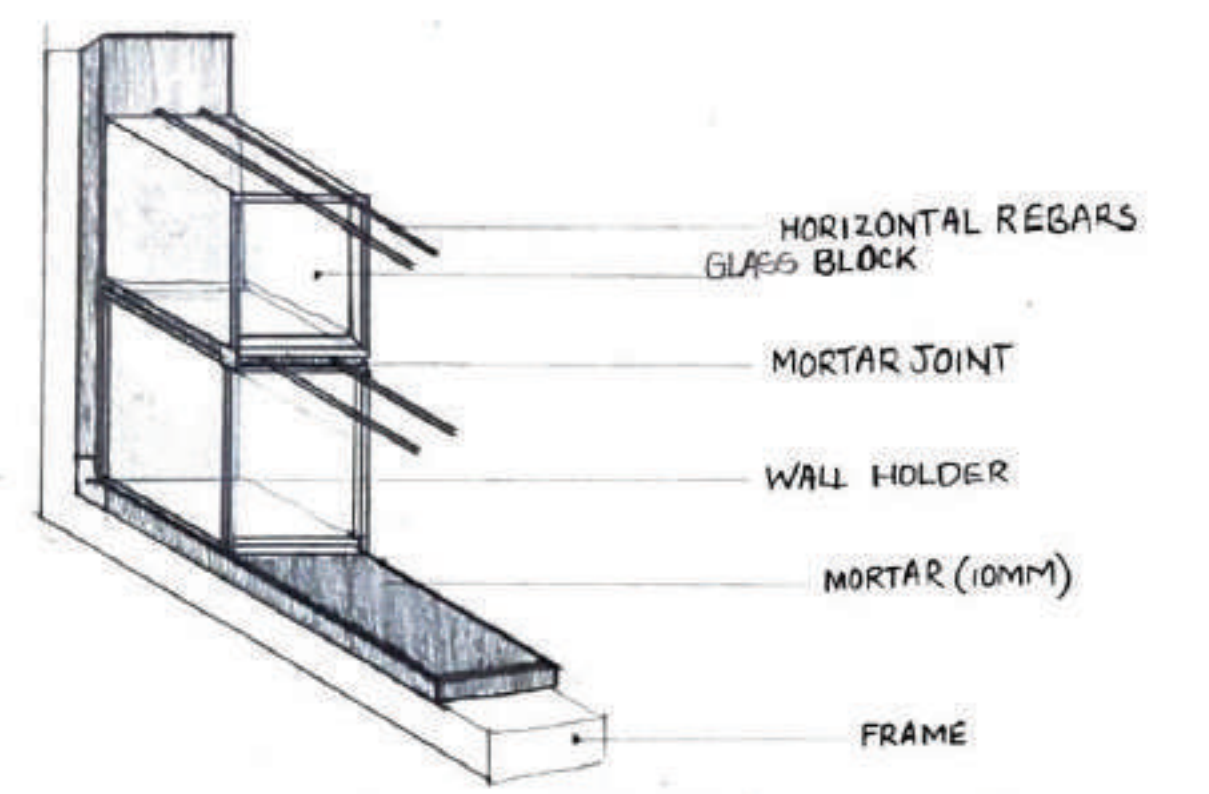
EARTH



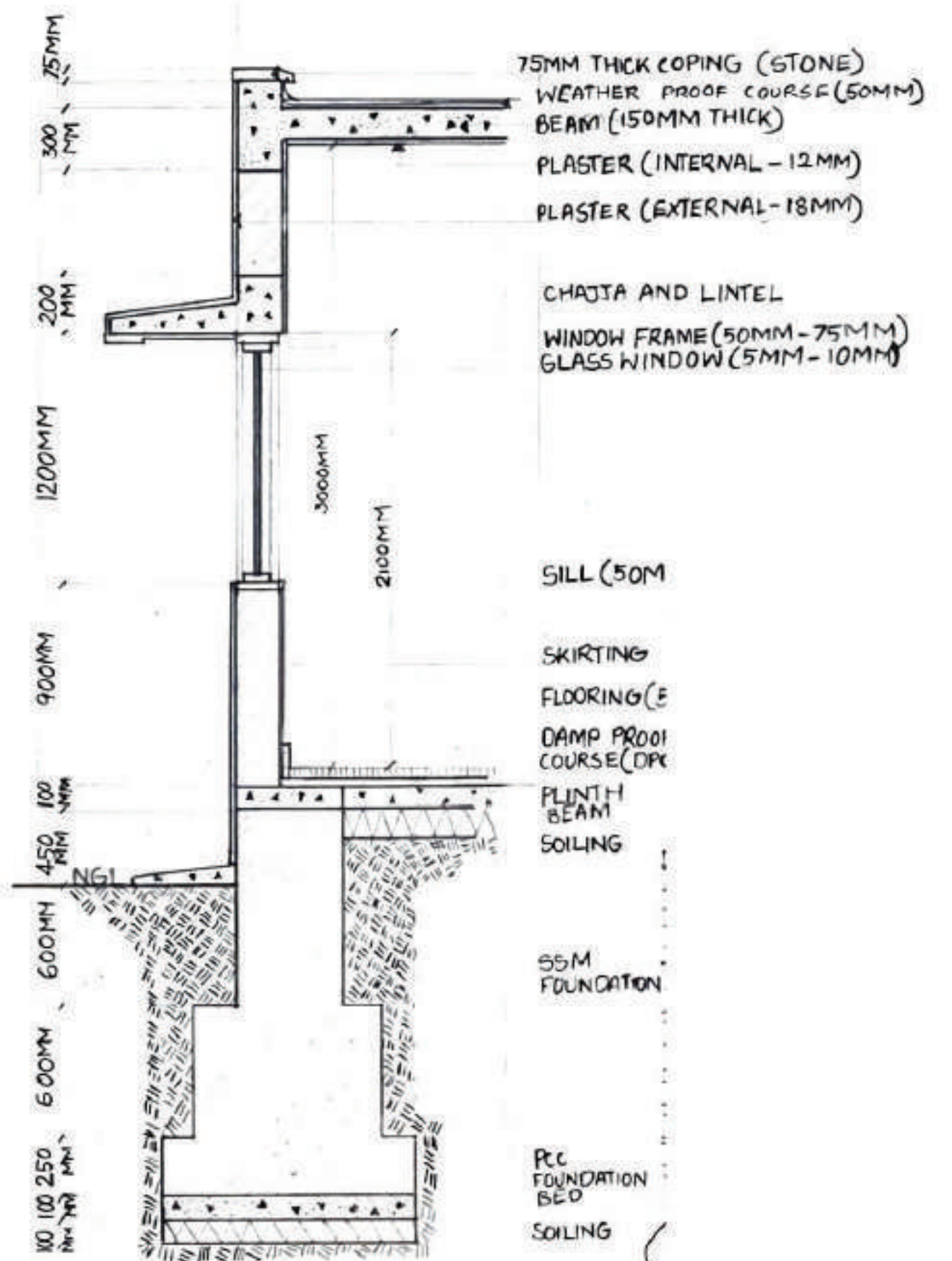
SOILING



PLAN



GLASS BLOCK WALL SECTION

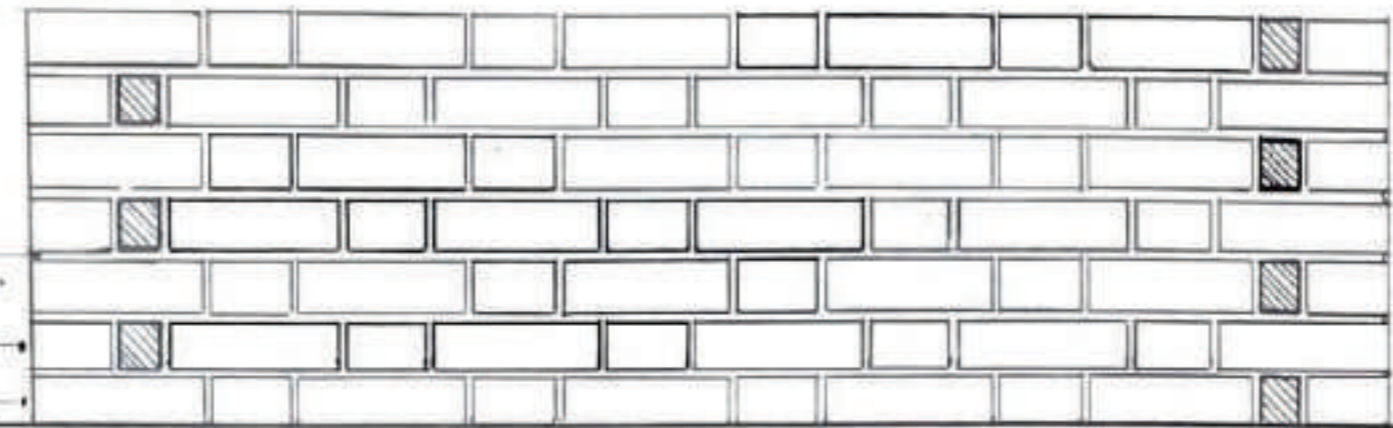
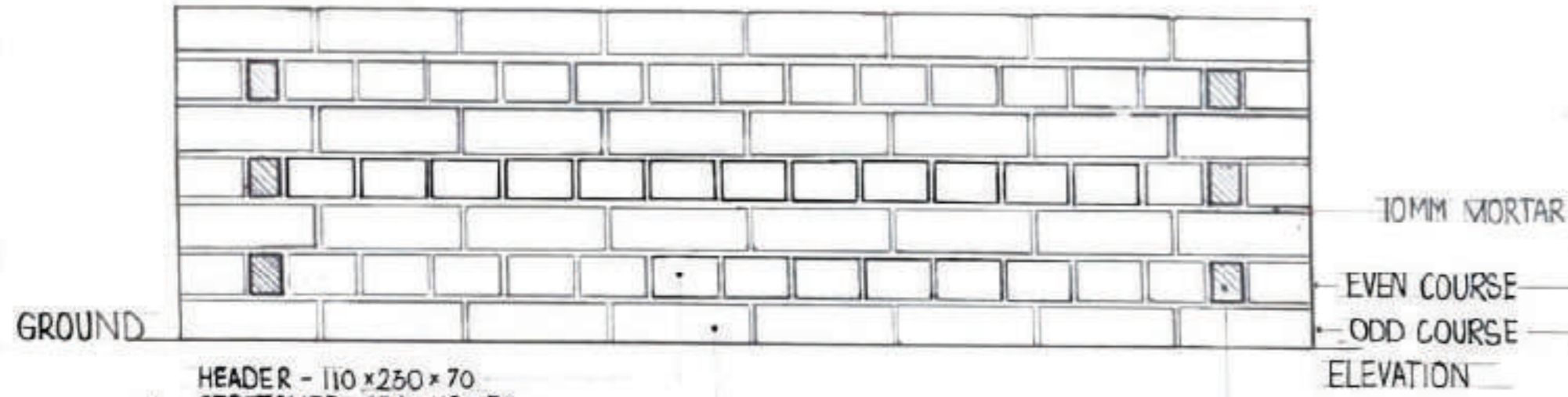


WALL SECTION



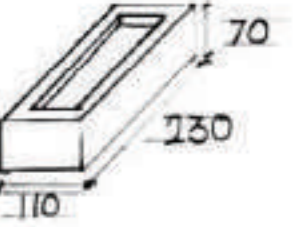
# ENGLISH BOND

# FLEMISH BOND



IS1077 STANDARD BRICKS

LENGTH - 230 MM  
BREADTH - 110 MM  
HEIGHT - 70 MM



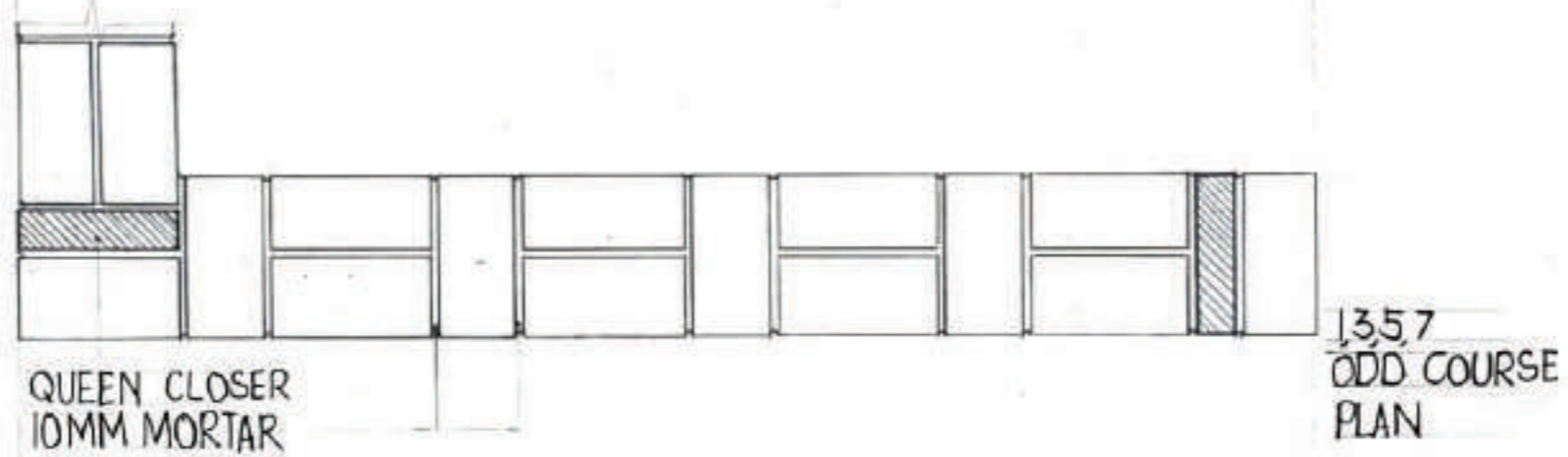
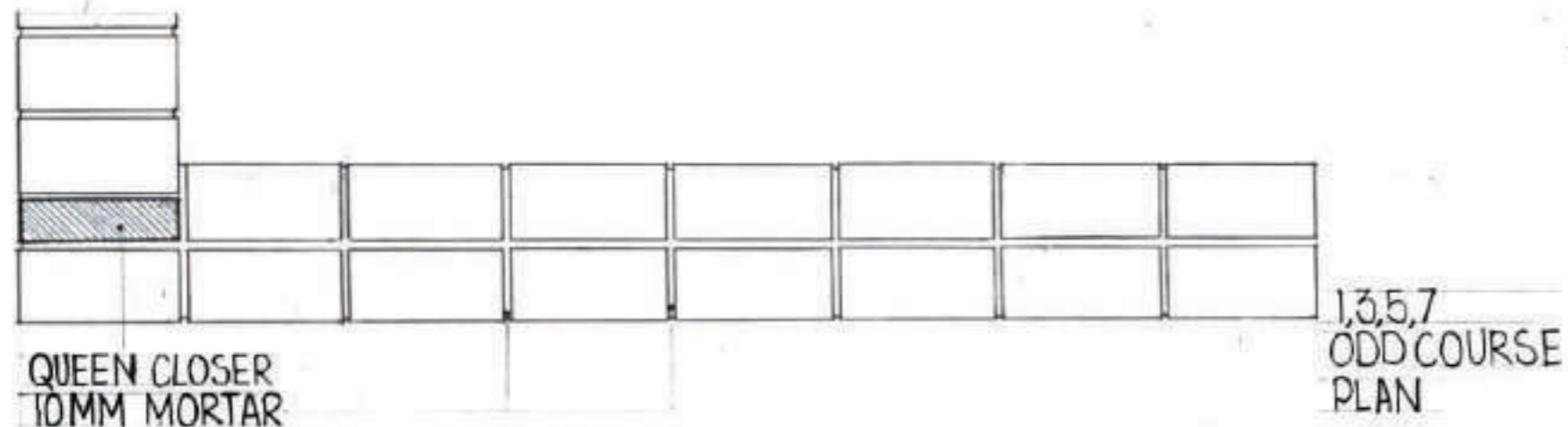
SPECIAL BRICK

QUEEN CLOSER  
DIMENSIONS - 230 x 55 x 70 MM



HEADER - 110 x 230 x 70  
STRETCHER - 230 x 110 x 70  
QUEEN CLOSER - 55 x 230 x 70  
QUEEN CLOSER IS USED TO AVOID PERPENDS  
NUMBER OF COURSES - 7

HEADER - 110 x 230 x 70  
STRETCHER - 230 x 110 x 70  
QUEEN CLOSER - 55 x 230 x 70  
QUEEN CLOSER IS USED TO AVOID PERPENDS  
NUMBER OF COURSES - 7



## ENGLISH BOND

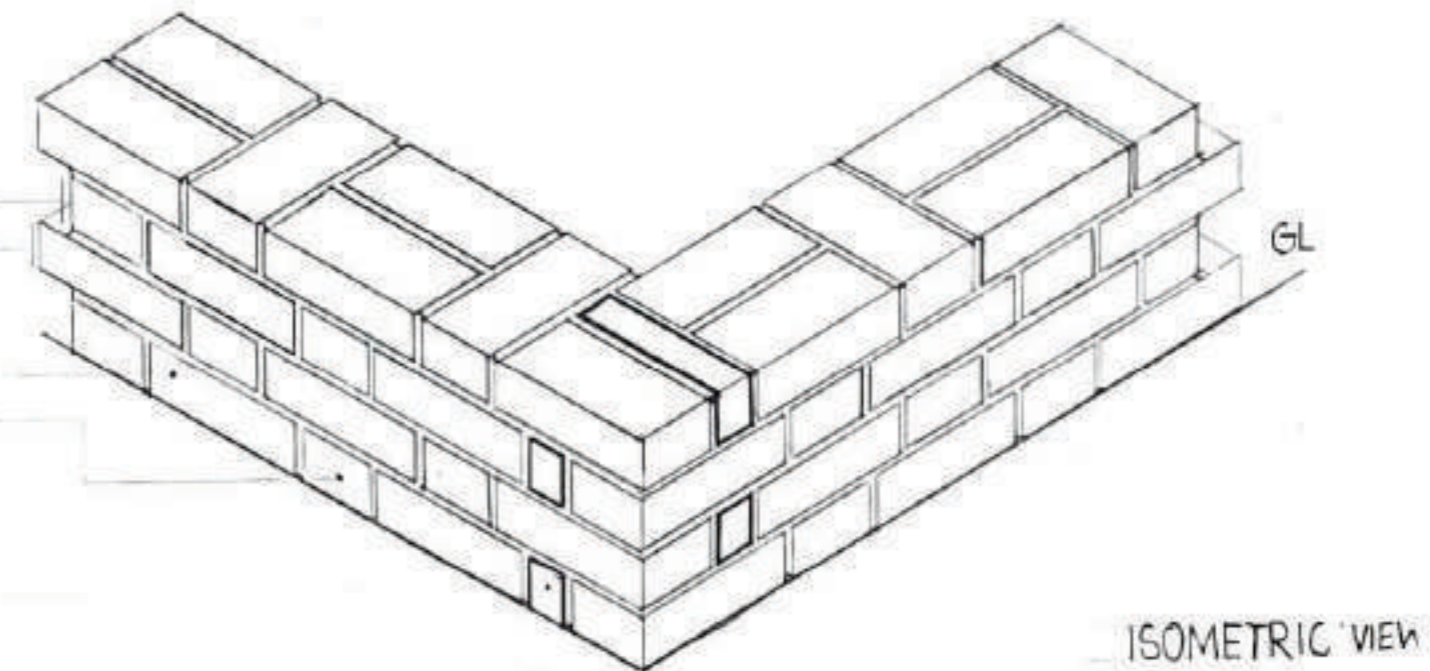
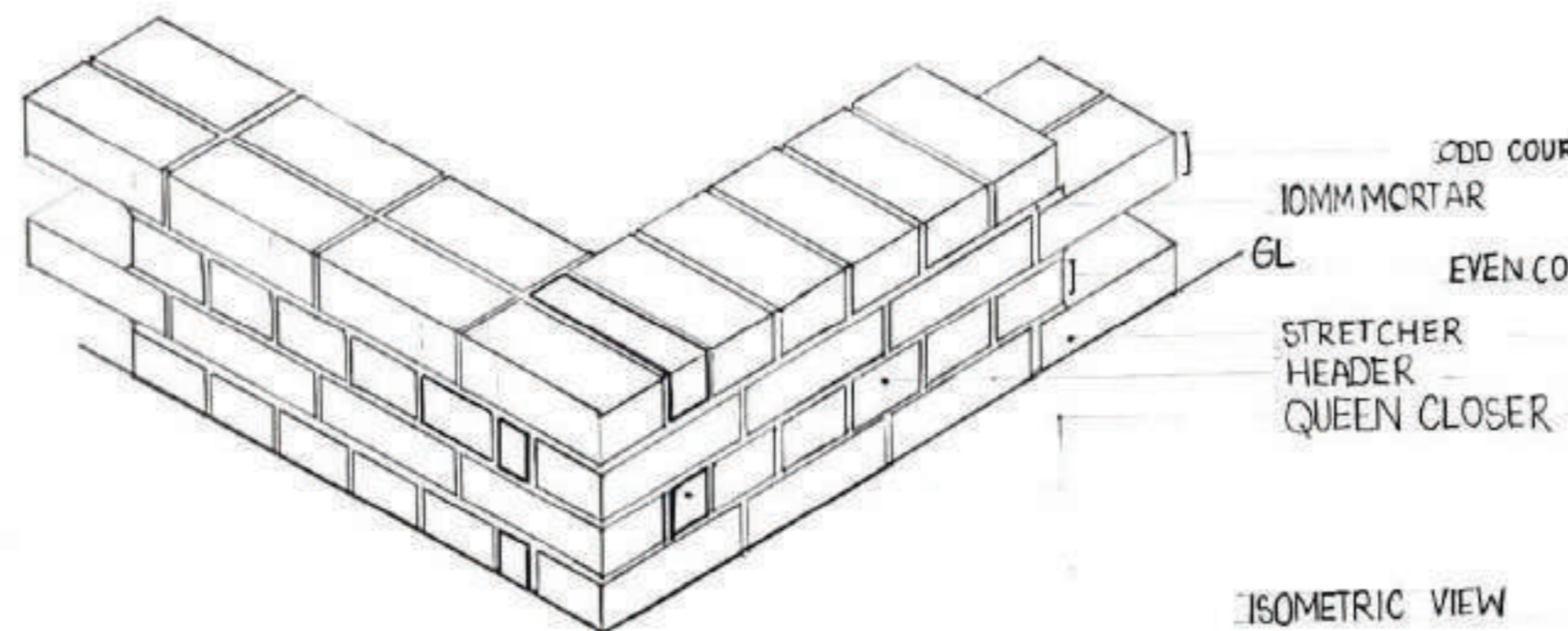
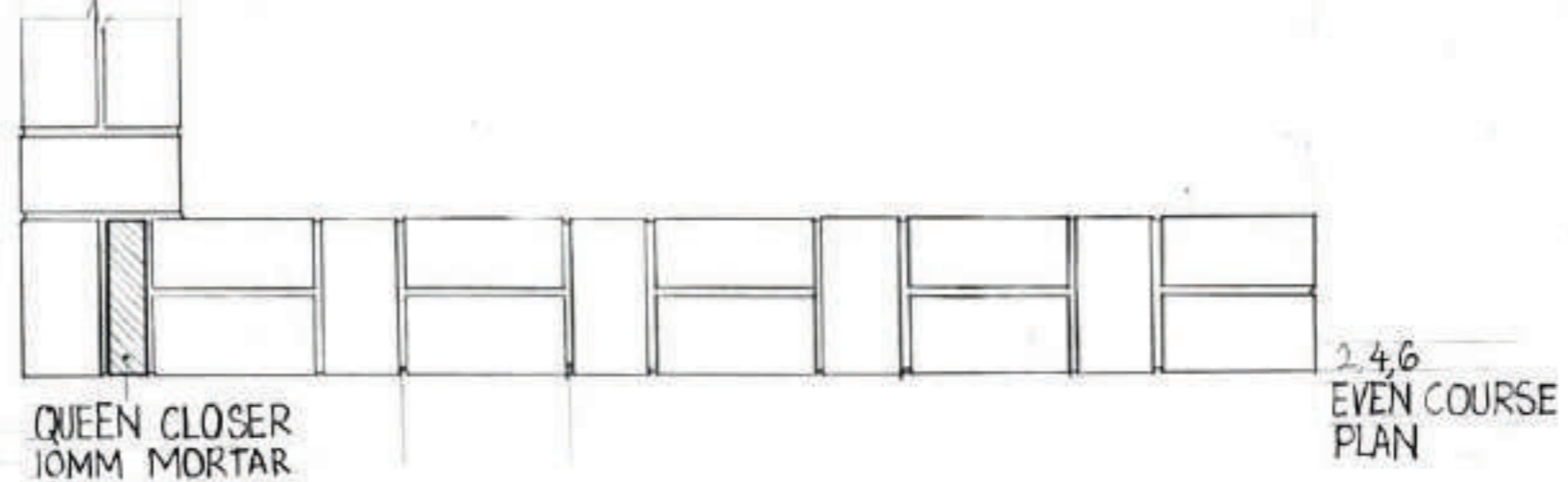
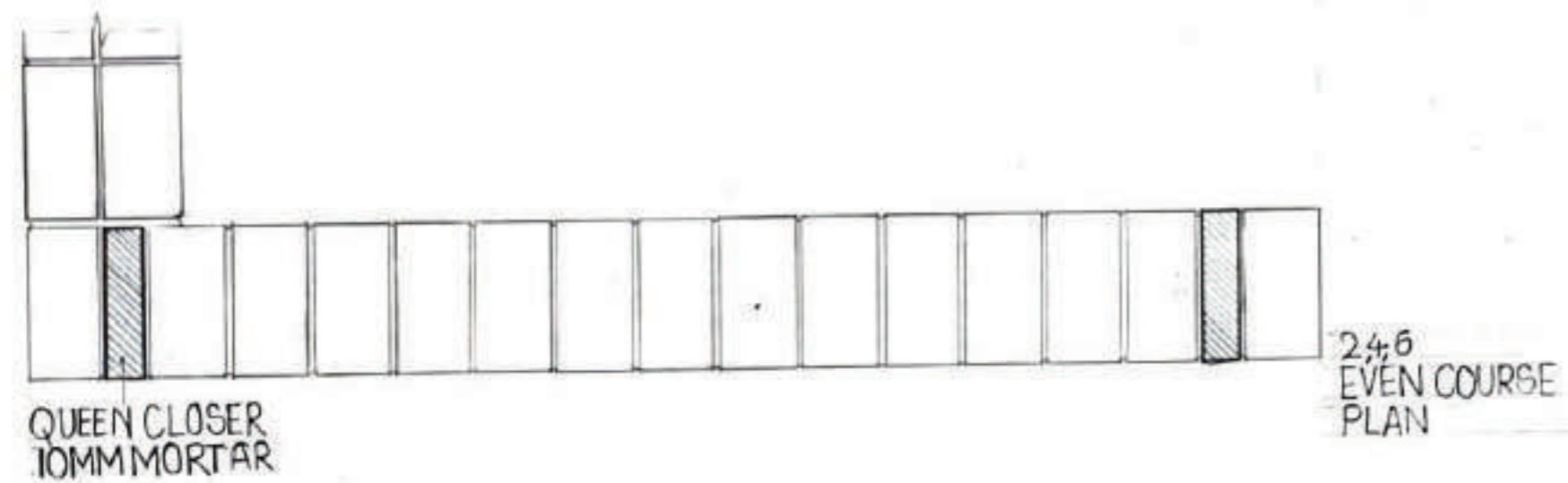
IT IS A BOND WITH SUCCESSIVE COURSES OF HEADER AND STRETCHERS.  
QUEEN CLOSER USED AFTER EVERY HEADER.  
STRONGER THAN FLEMISH BOND.

## FLEMISH BOND

IT IS A BOND WHERE EVERY COURSE IS OF ALTERNATE HEADER AND STRETCHER.  
IT IS AESTHETICALLY PLEASING

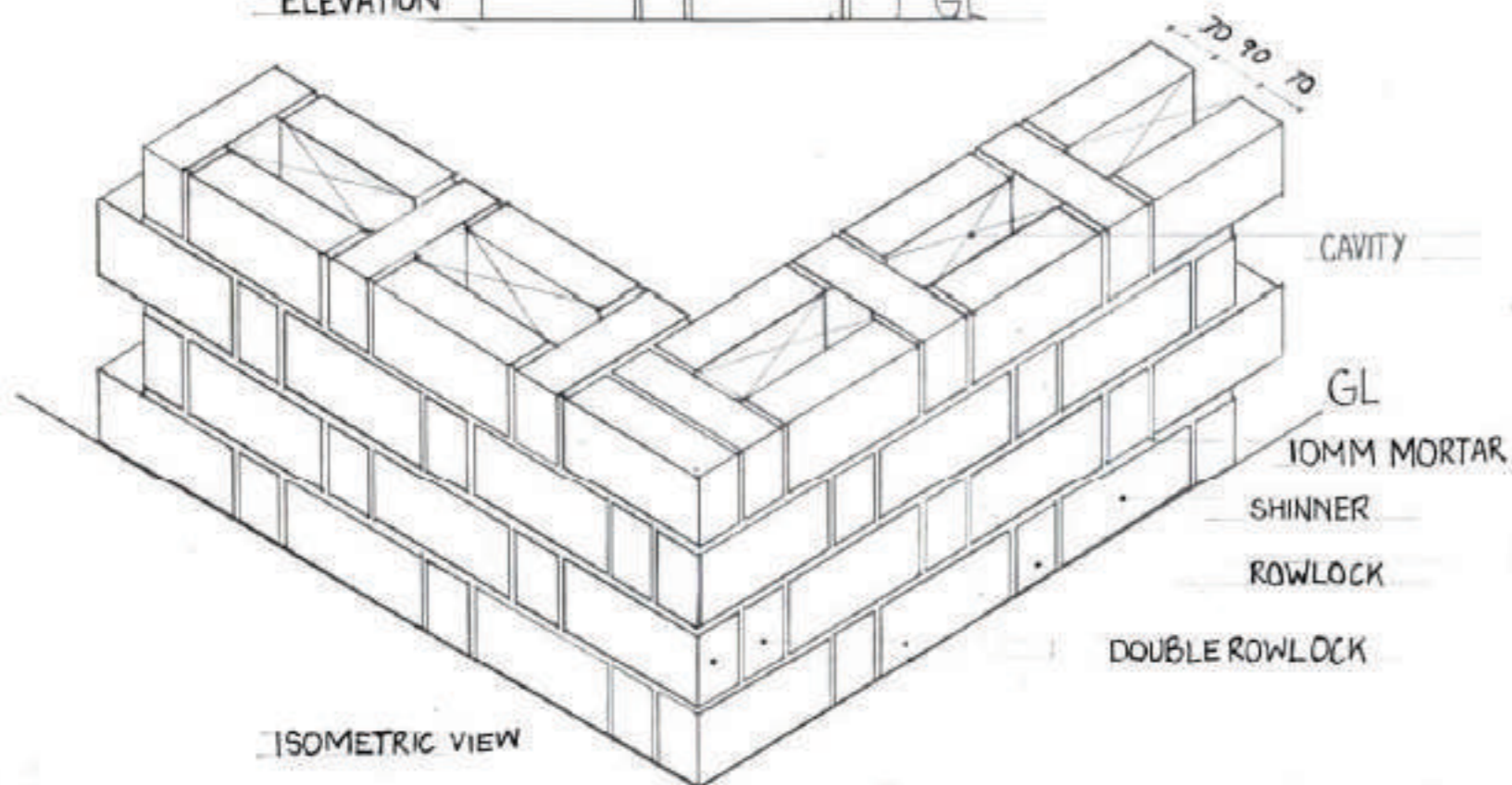
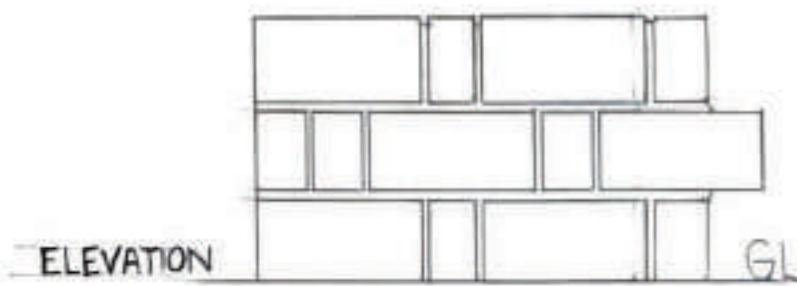
STRONGEST BOND - HEADER BOND

MORTAR RATIO - 1:6



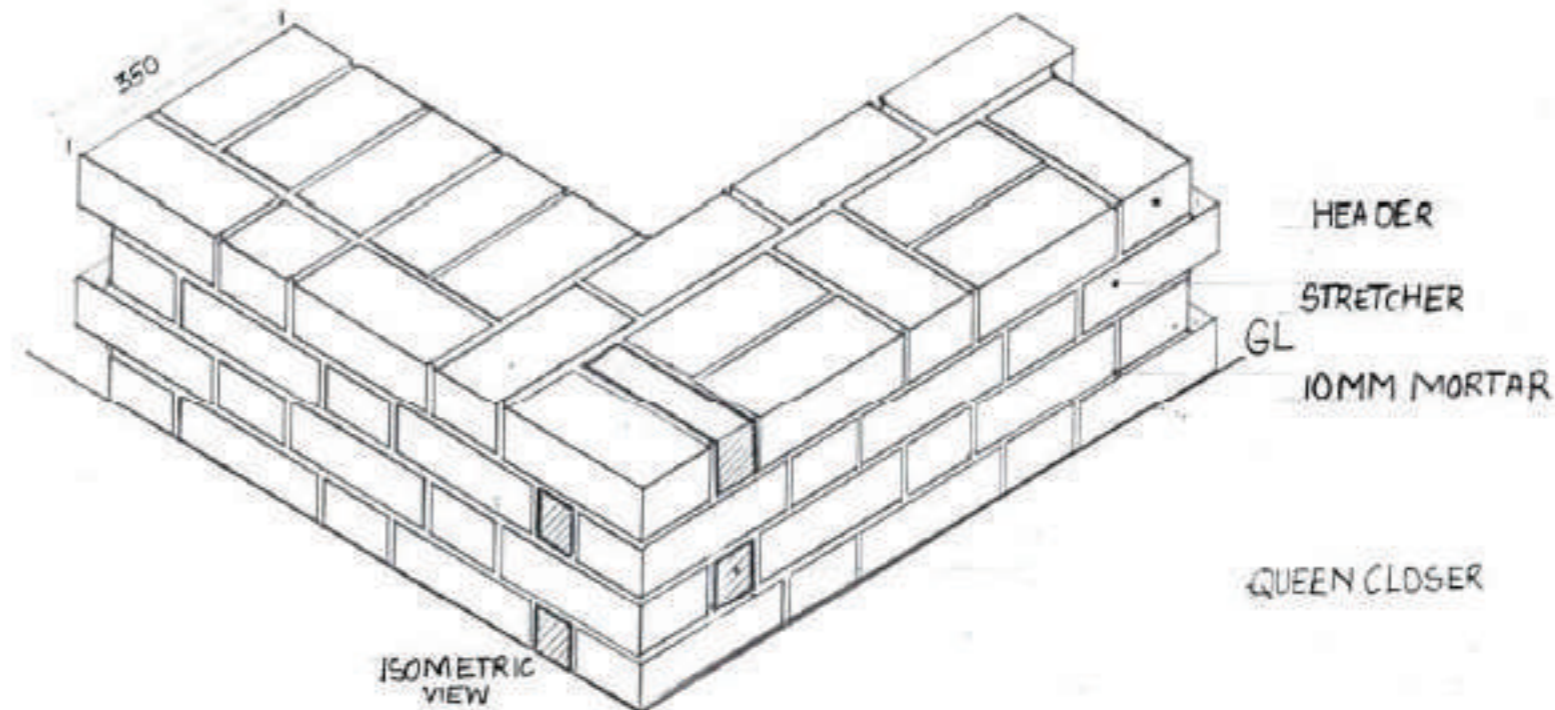
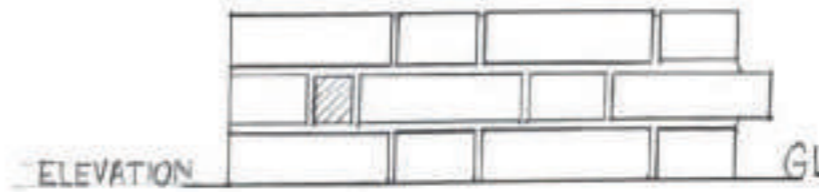


### RATRAP BOND



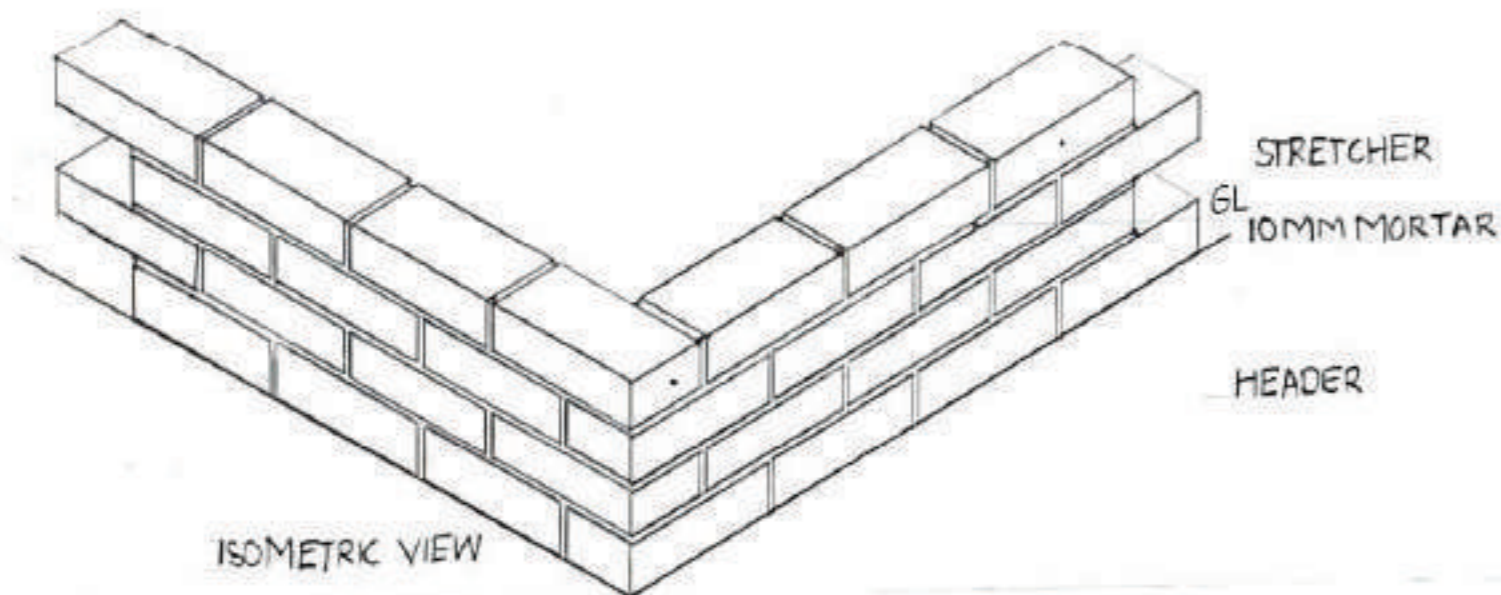
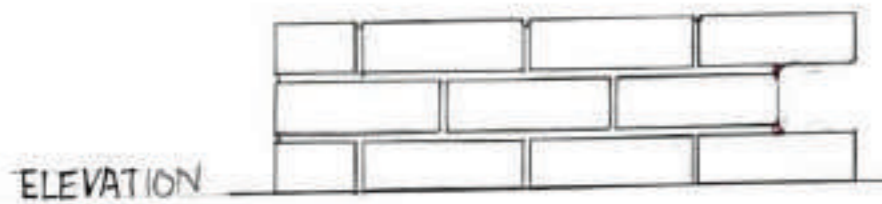
- DIMENSIONS OF SHINNER - 230 x 110
- DIMENSIONS OF ROWLOCK - 70 x 110
- DOUBLE ROWLOCK IS USED TO AVOID PERPENDS IN THE BOND
- THE BOND IS A TYPE OF CAVITY WALL HENCE MAKES STRUCTURE ECOFRIENDLY
- CONSTRUCTION COST IS LOW.

### SINGLE FLEMISH BOND



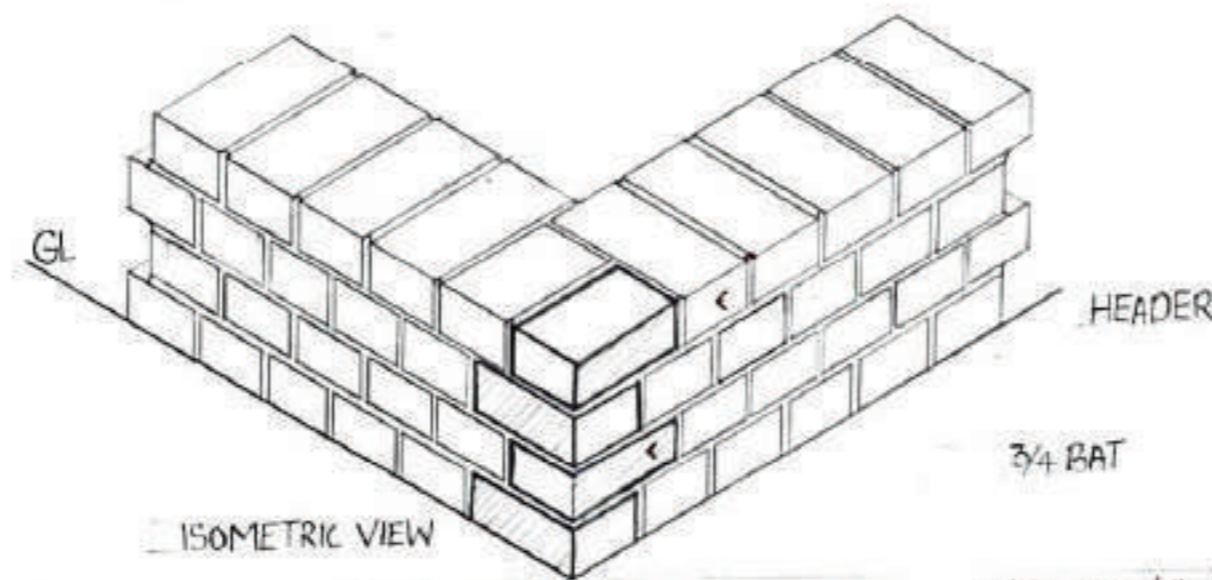
- DIMENSIONS OF STRETCHER - 230 x 70
- DIMENSIONS OF HEADER - 110 x 70
- DIMENSIONS OF QUEEN CLOSER - 55 x 70 - USED TO AVOID PERPENDS
- SINGLE FLEMISH IS A 1/2 WALL - 350MM
- IT APPEARS SAME AS REGULAR FLEMISH BOND FROM ELEVATION

### STRETCHER BOND



- DIMENSIONS OF STRETCHER - 230 x 70
- DIMENSIONS OF HEADER - 110 x 70
- THIS BOND IS NOT SUITABLE FOR LOAD BEARING WALLS

### HEADER BOND



- DIMENSIONS OF HEADER - 110 x 70
- DIMENSIONS OF 3/4 BAT - 170 x 70
- 3/4 BAT IS USED TO AVOID PERPENDS

BRICKS USED ARE 150 1077 SIZED.

SPECIAL BRICK

1. QUEEN CLOSER. DIMENSIONS - 230 x 55 x 70MM



2. 3/4th BAT. DIMENSIONS - 170 x 110 x 70MM



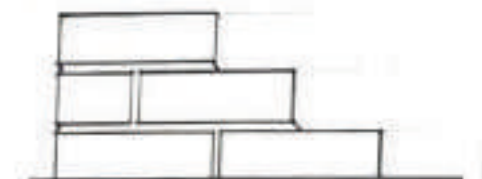
MORTAR USED IS 1:1:6 CEMENT AND SAND RESPECTIVELY.

TOOTHING: THE PROCESS OF MAKING TOOTHED ENDINGS ON BRICK MASONRY AND TO BEGIN CONSTRUCTION LATER. USED FOR PERPENDICULAR INTERSECTIONS.



TOOTHINGS

RAKING: SIMILAR TO TOOTHING. IT IS USED WHEN ONLY A STRAIGHT WALL IS TO BE CONSTRUCTED.



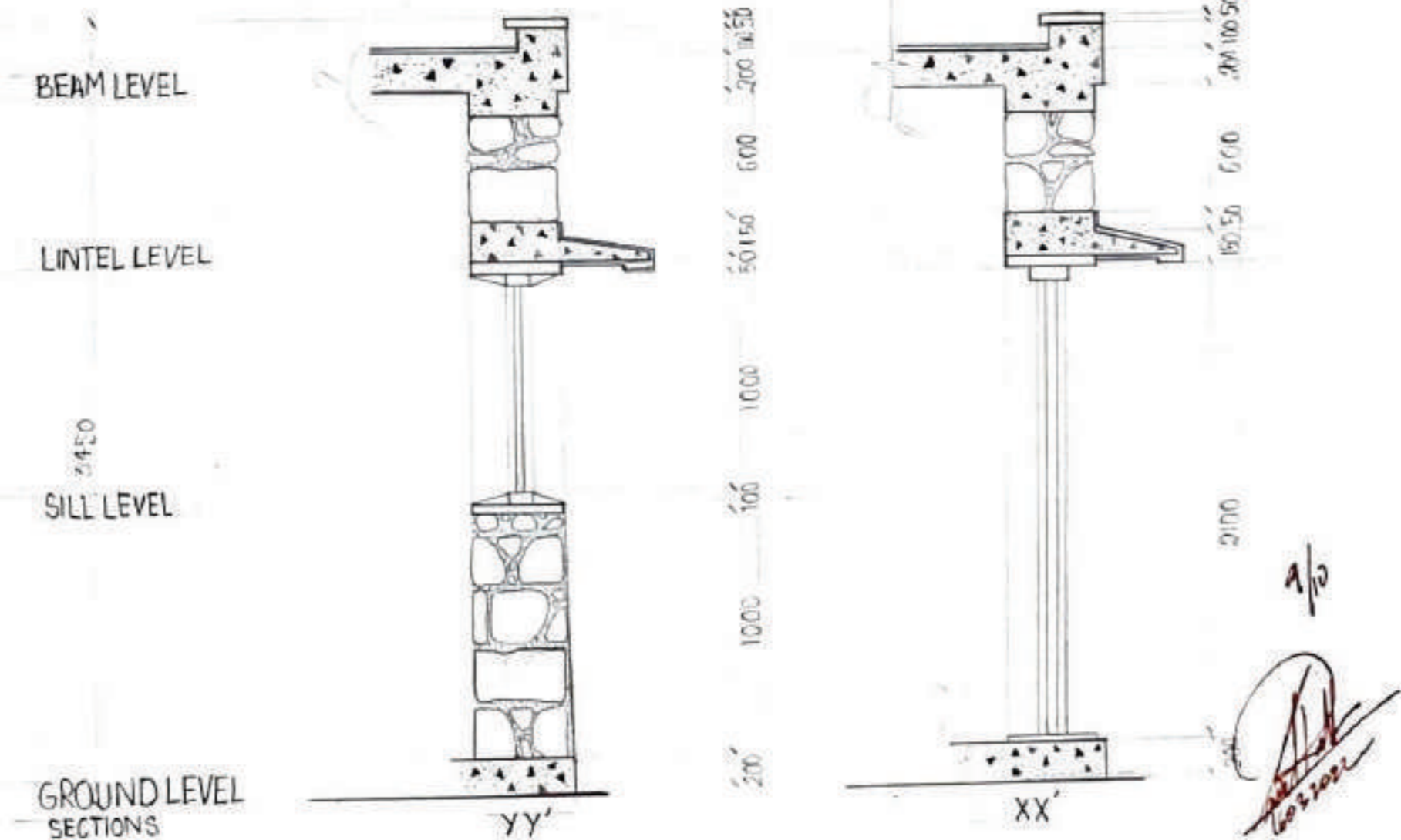
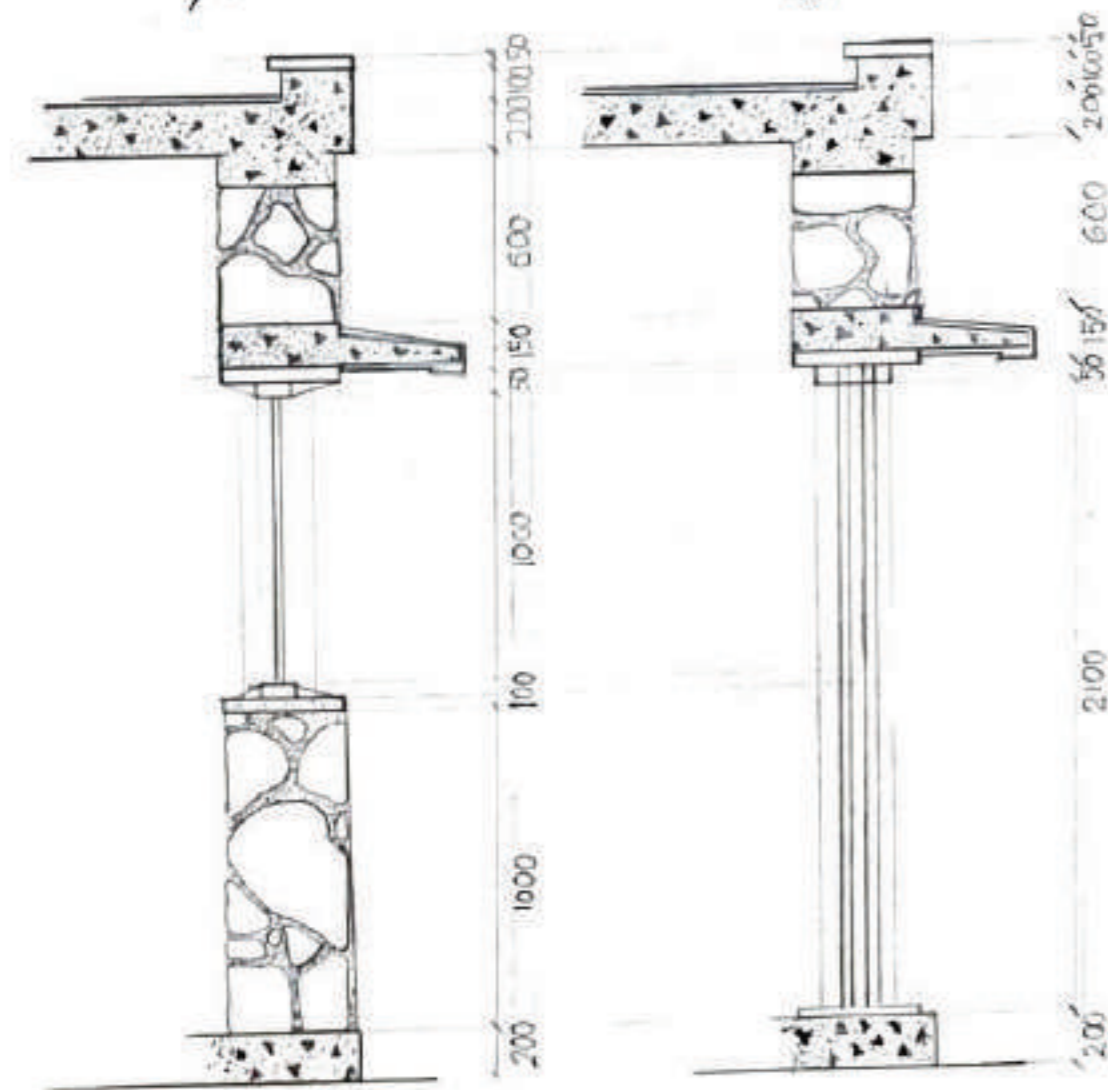
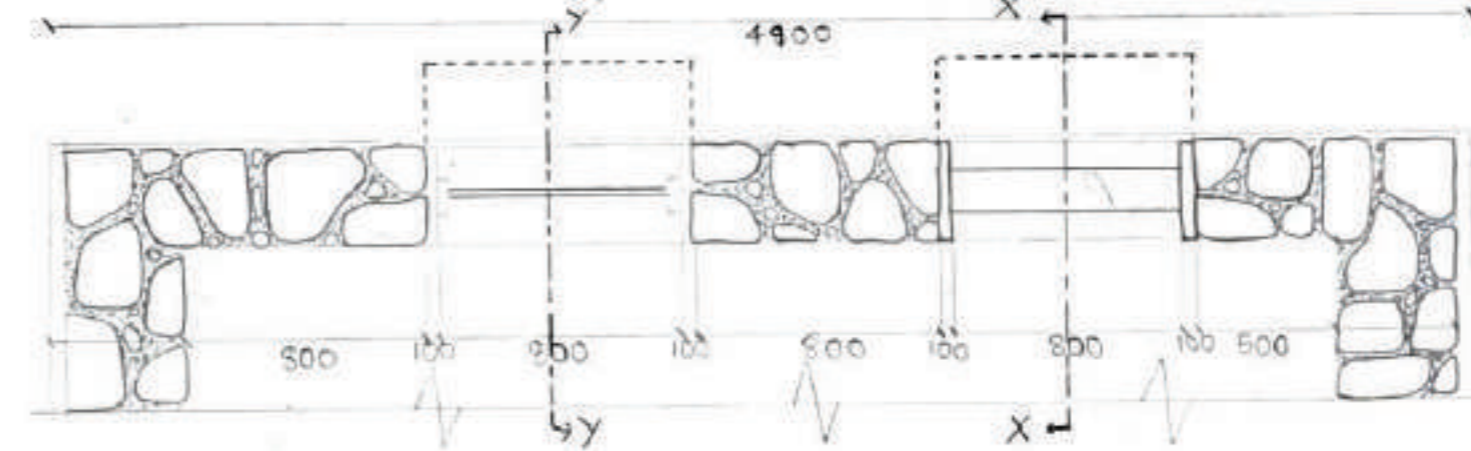
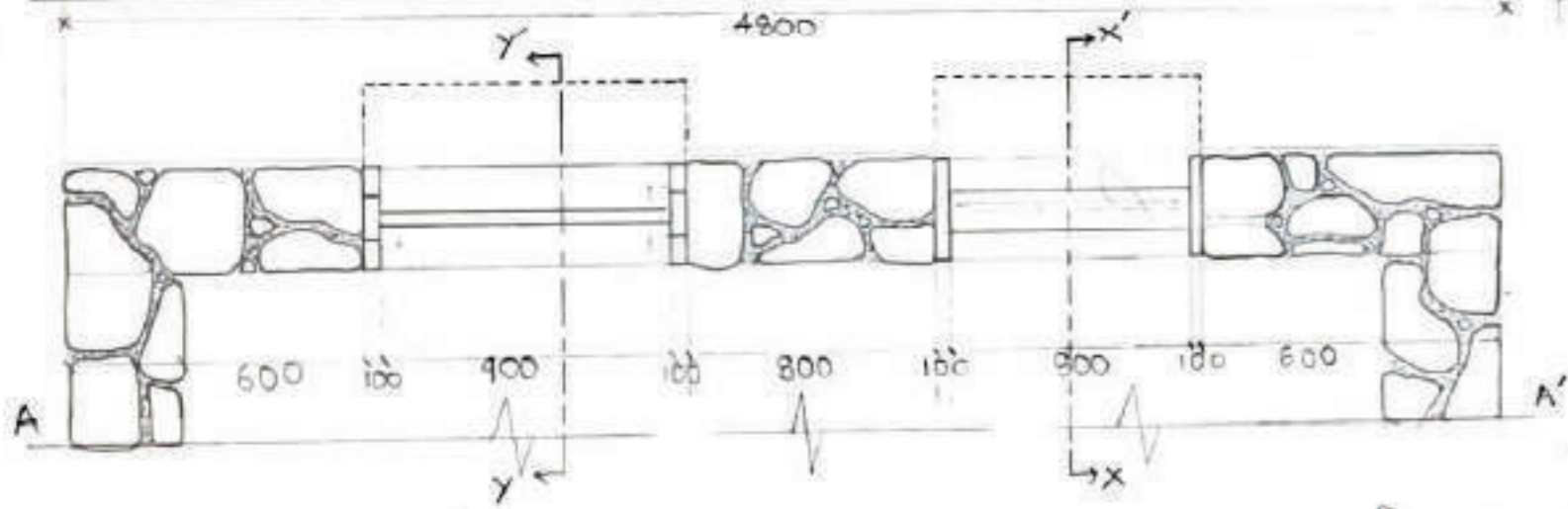
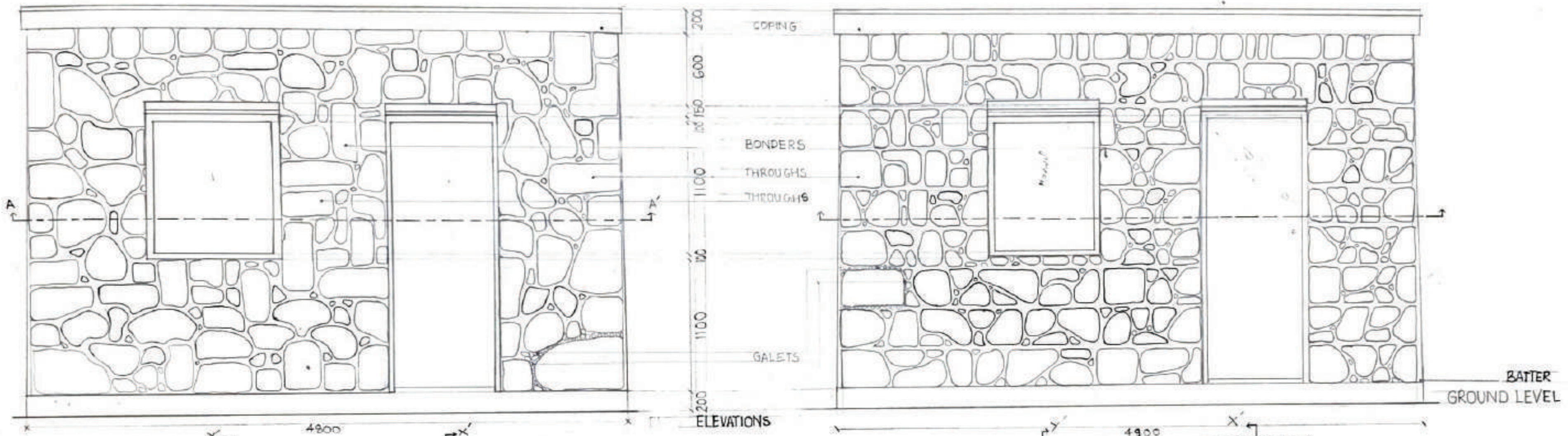
• Improve lettering.

7.5/10



# RANDOM RUBBLE MASONRY

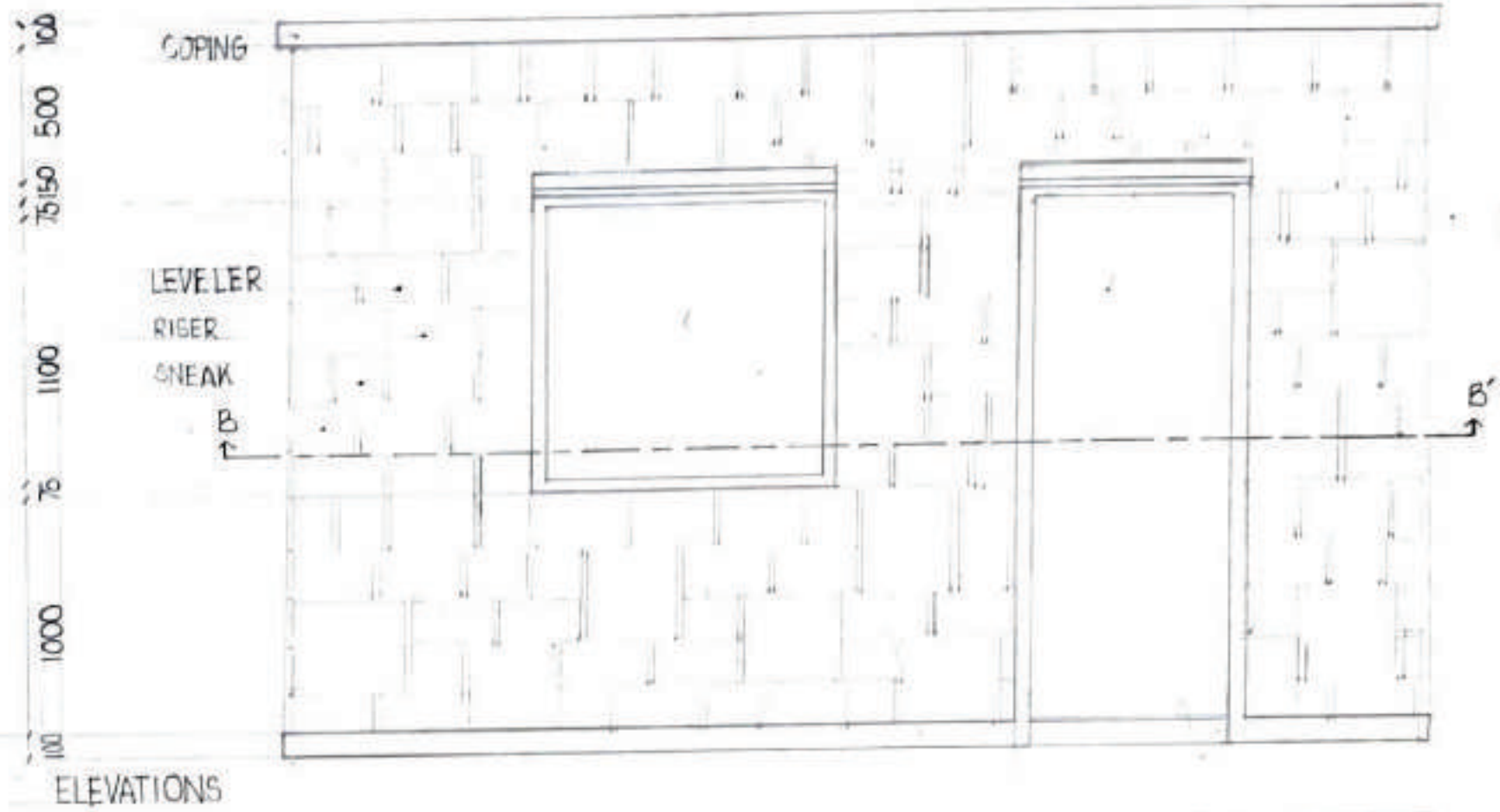
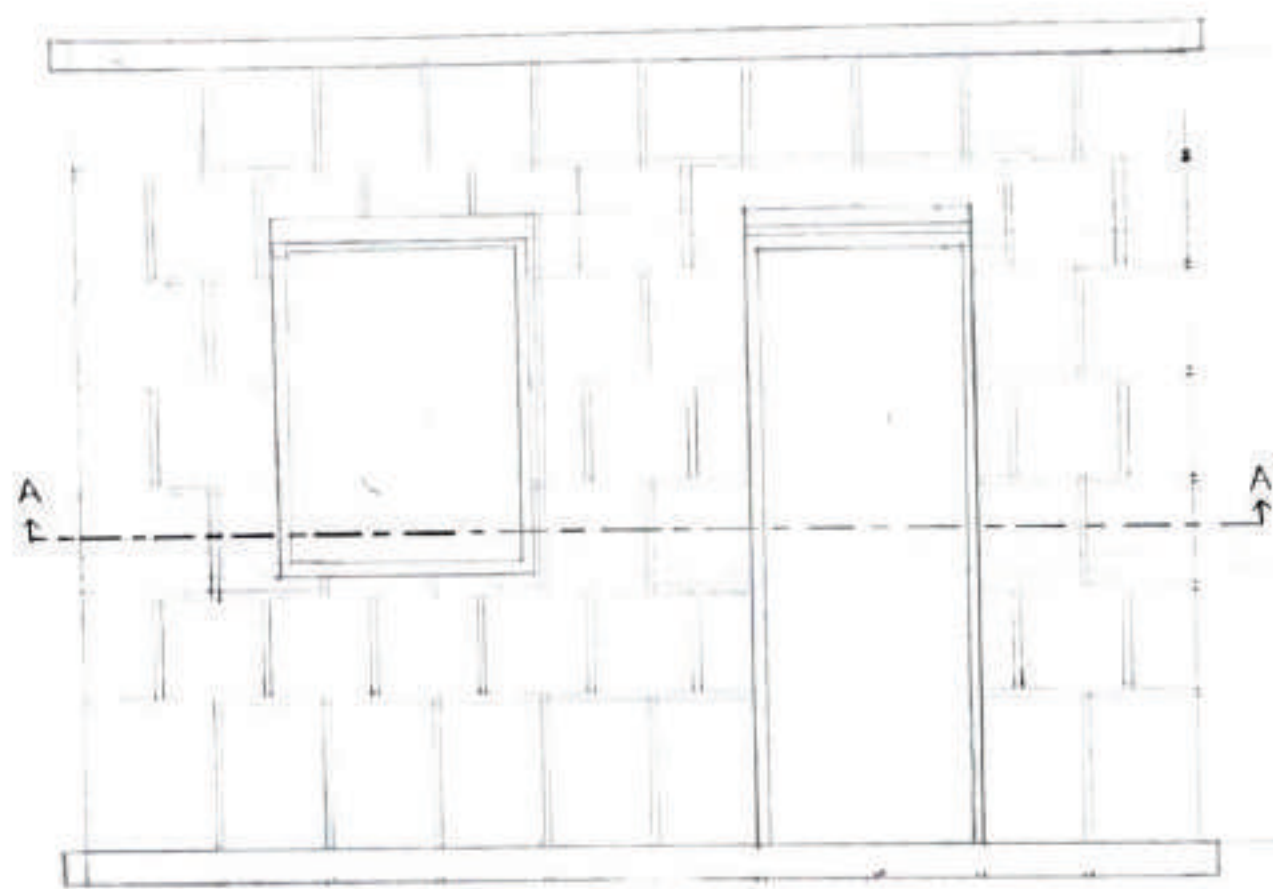
# COURSED RUBBLE MASONRY



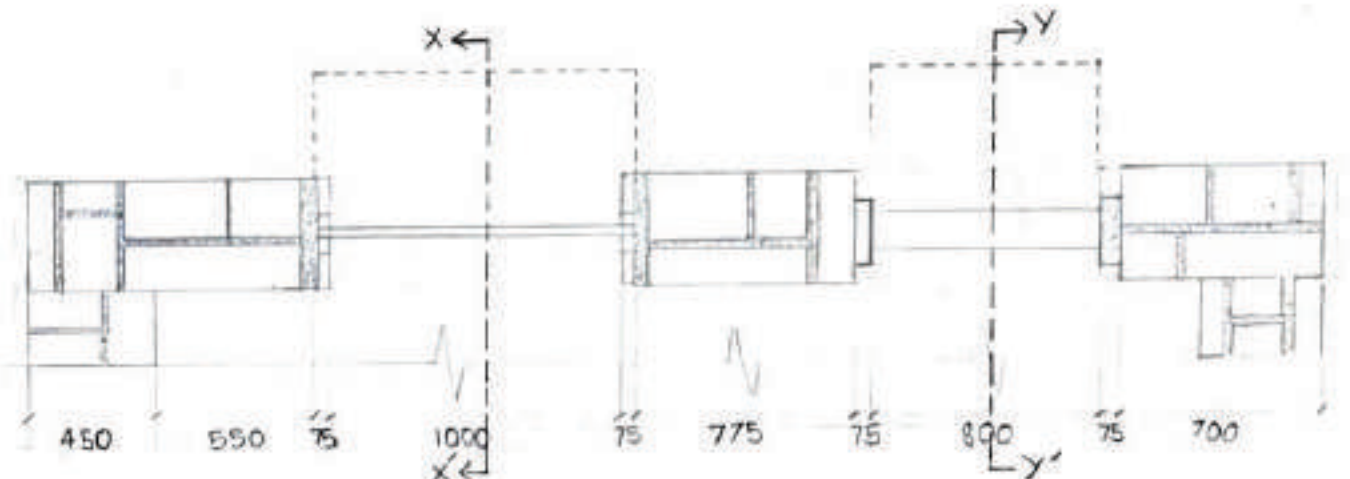
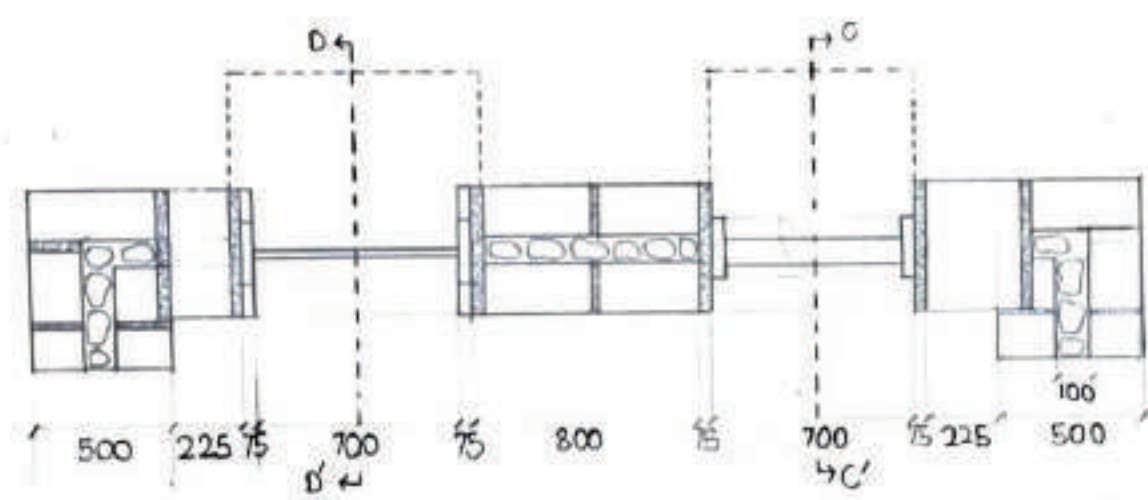


# SIZE STONE MASONRY

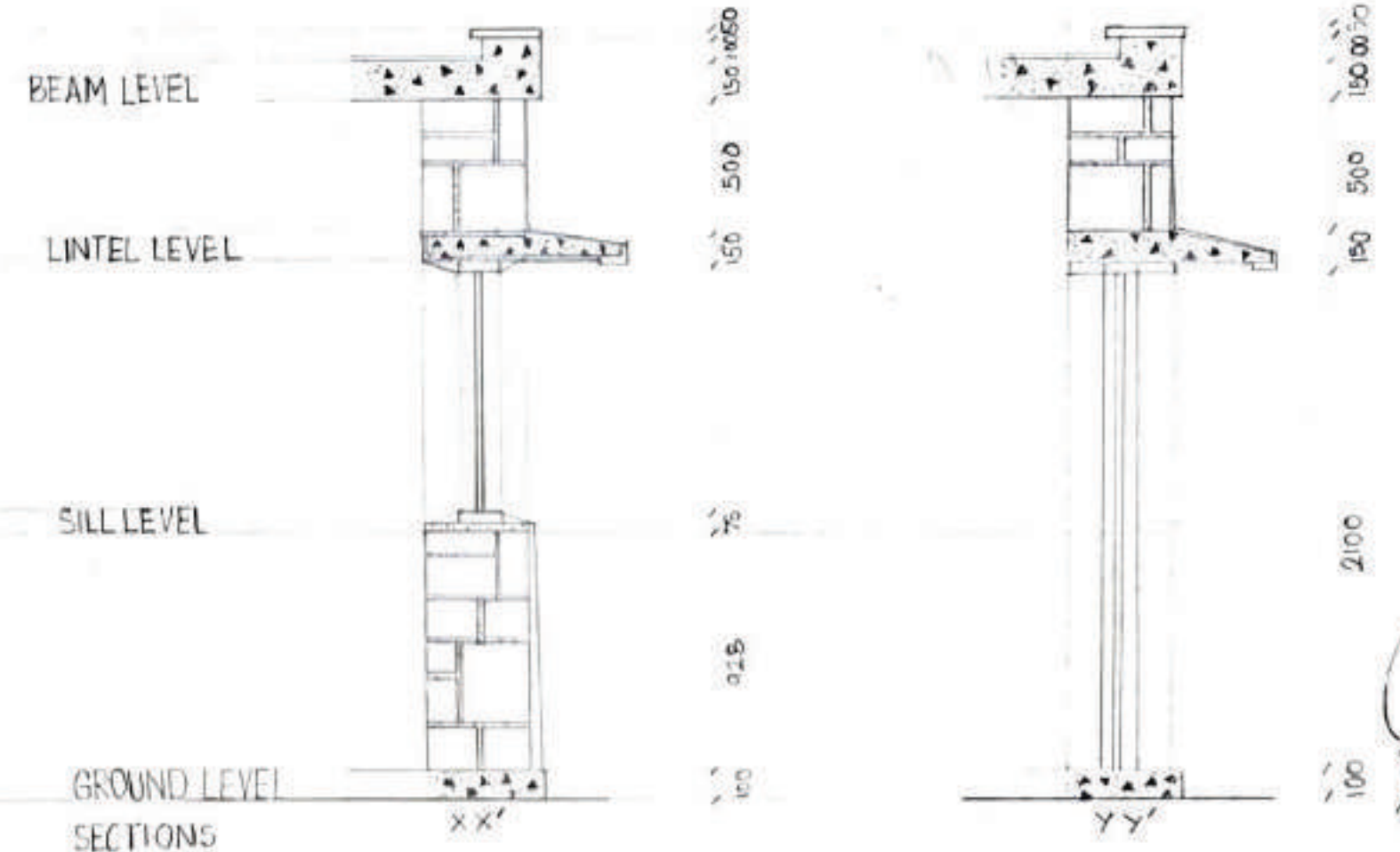
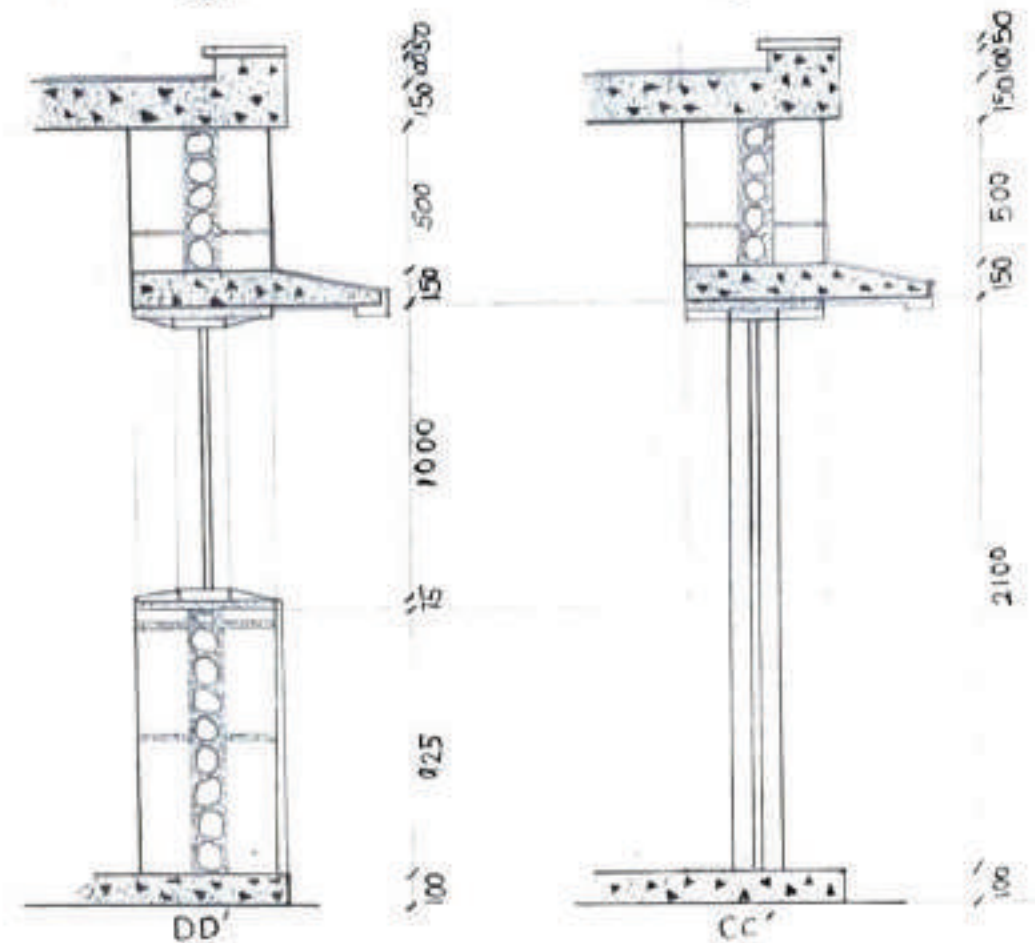
# SQUARED RUBBLE MASONRY



ELEVATIONS



PLANS



SECTIONS

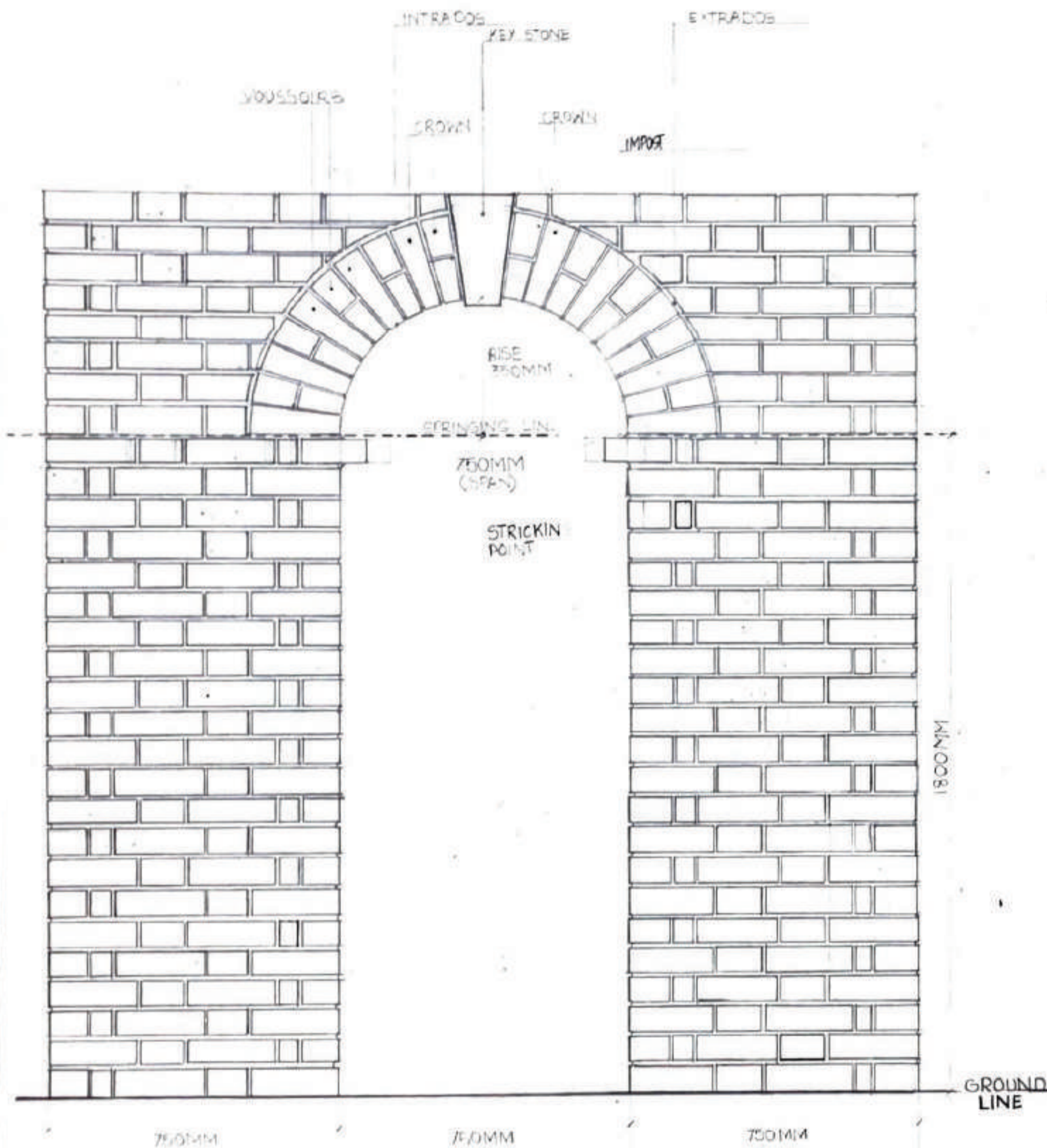
*[Handwritten signature]*  
16/01/2022







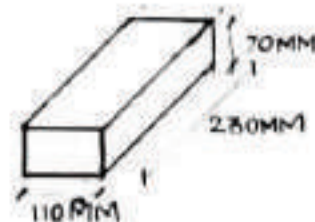
# SEMICIRCULAR ARCH



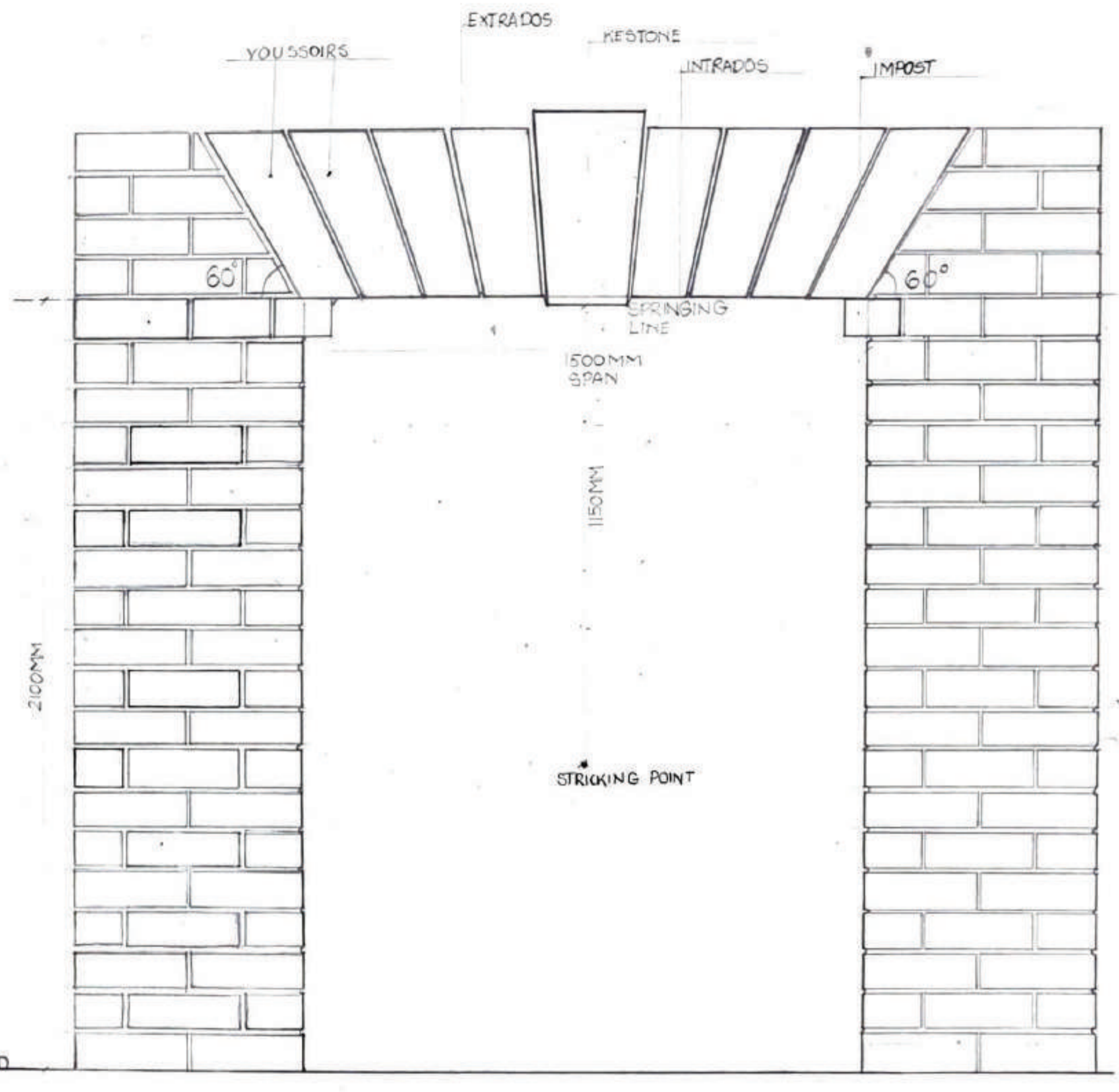
MATERIAL - 150-1077 BRICKS - 230 x 110 x 70MM  
BRICK BOND USED - FLEMISH BOND

SCALE - 1:10

SEMICIRCULAR ARCH IS ALSO KNOWN AS ROMAN ARCH.  
IT FORMS A HALF CIRCLE.  
IT IS COMMONLY SEEN IN ROMAN BRIDGES AND AQUADUCTS.  
COMPONENTS OF ARCH - KEYSTONE, CROWN, VOUSSOIRS, IMPOST,  
INTRADOS AND EXTRADOS.



# FLAT ARCH



MATERIAL - STONE OF SIZE - 300 x 150 x 100MM

SCALE - 1:10

FLAT ARCH IS ALSO CALLED  
IT IS MAJORLY USED IN MASONRY CONSTRUCTIONS

6/5/10  
*[Signature]*  
16032024

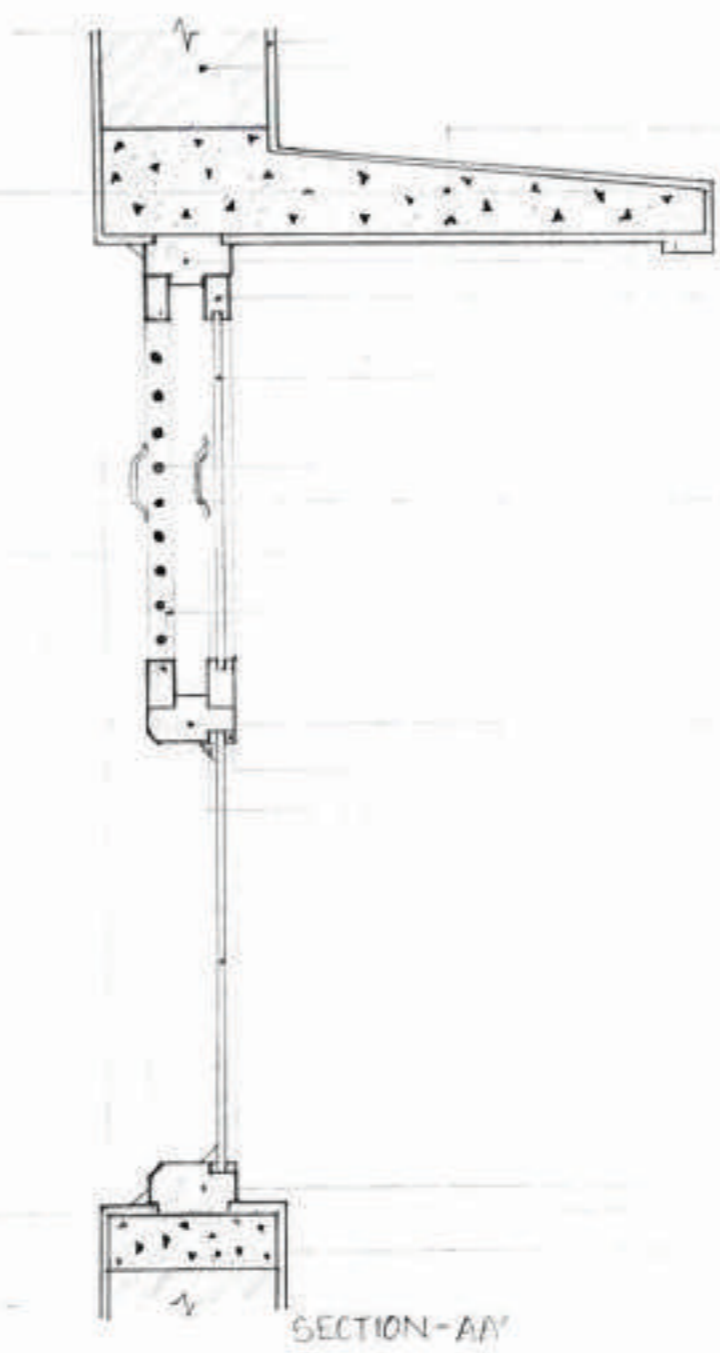
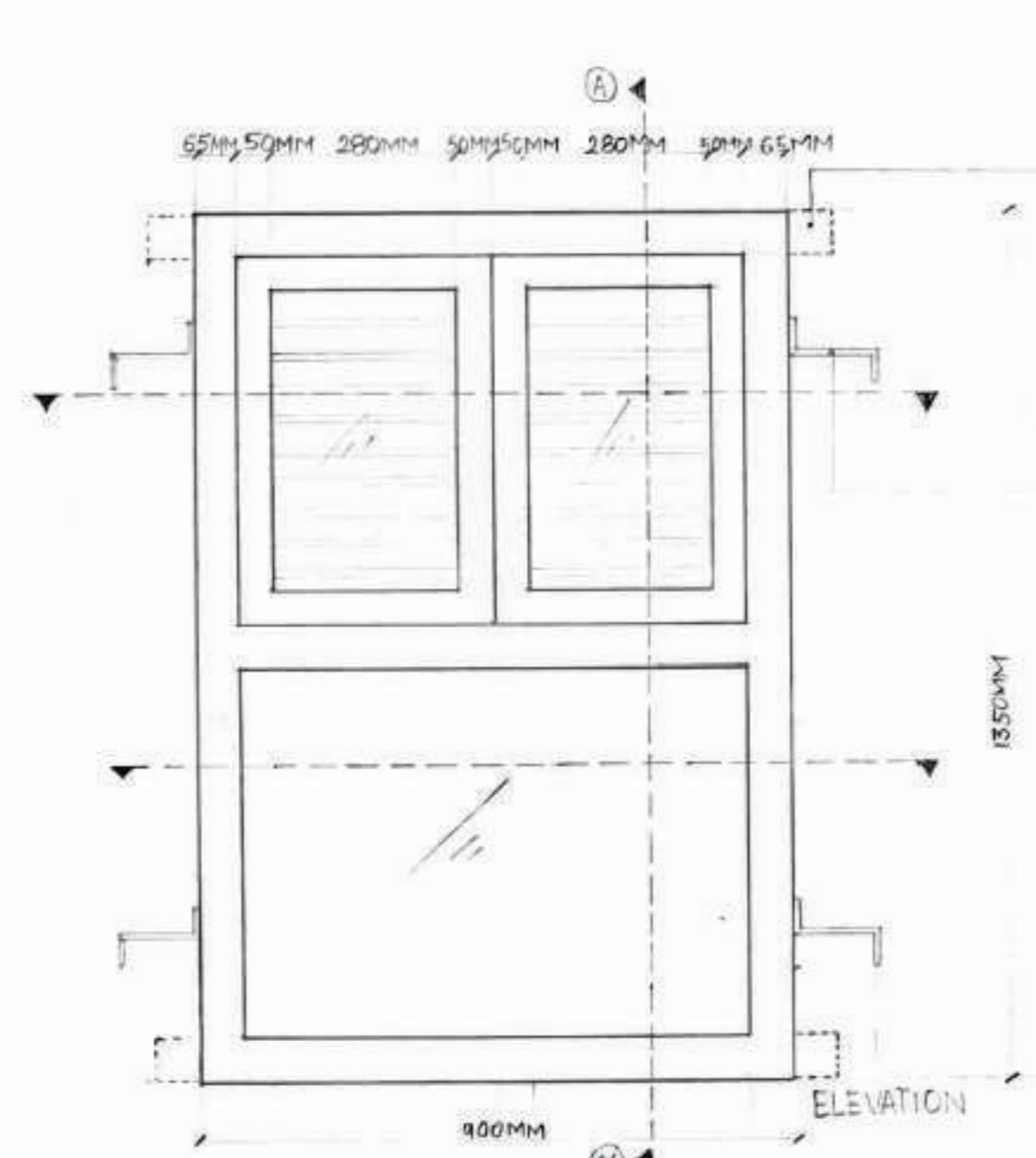
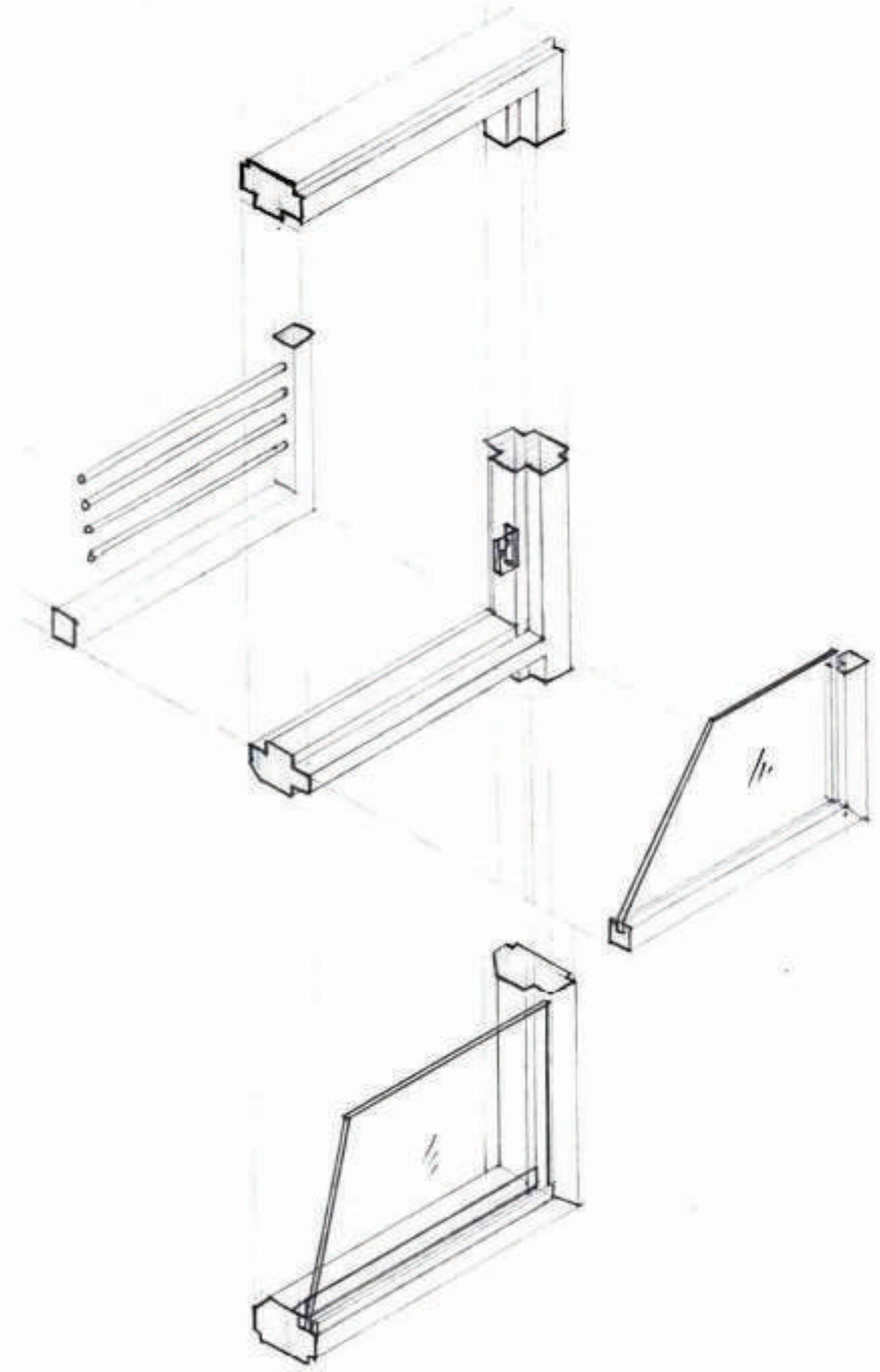
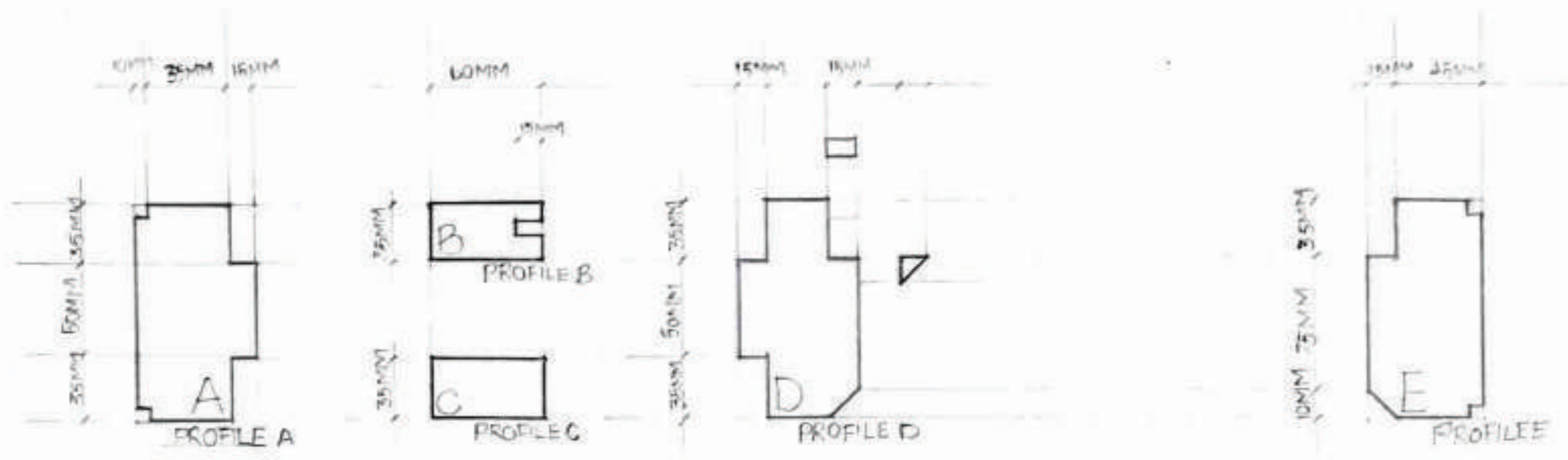




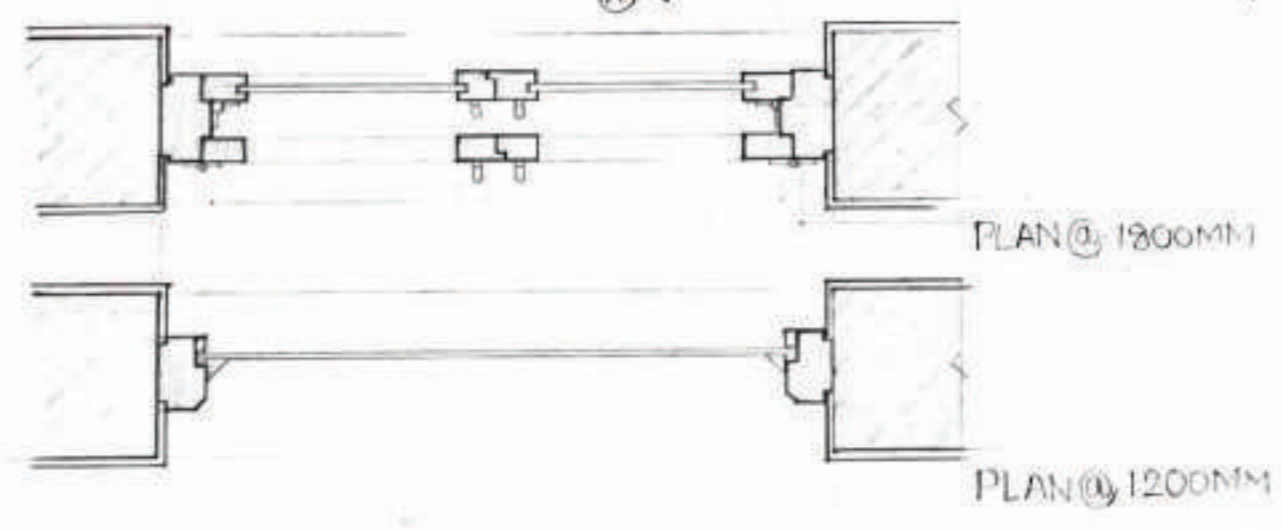




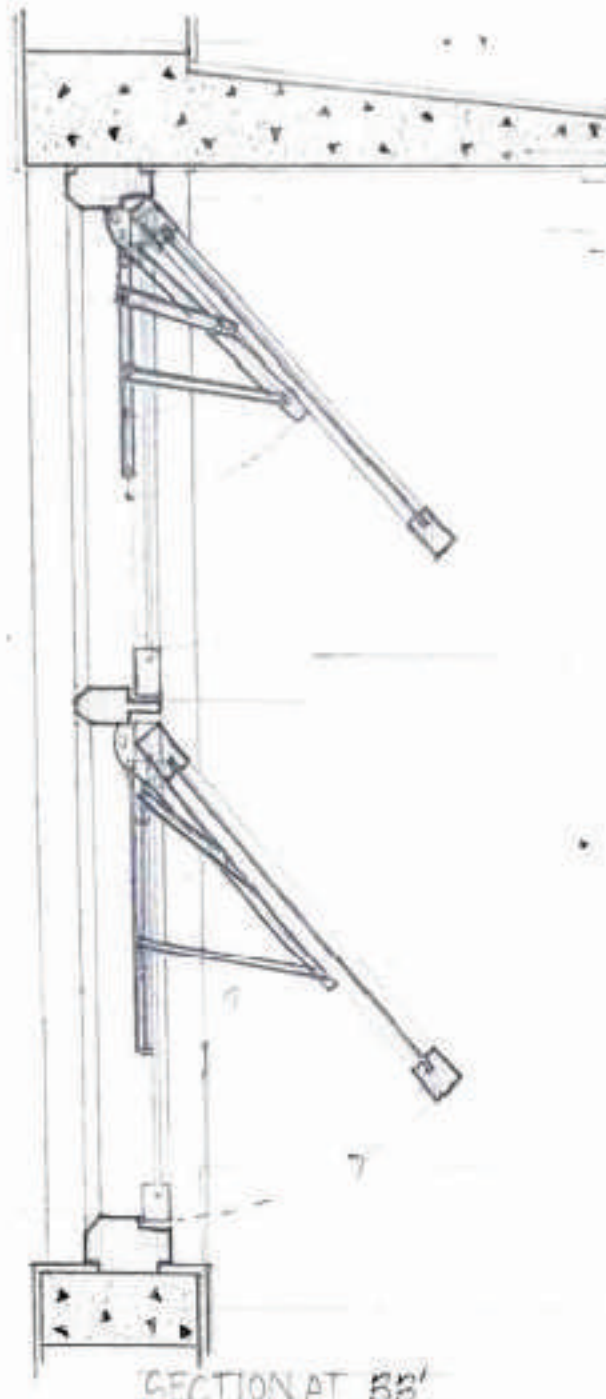
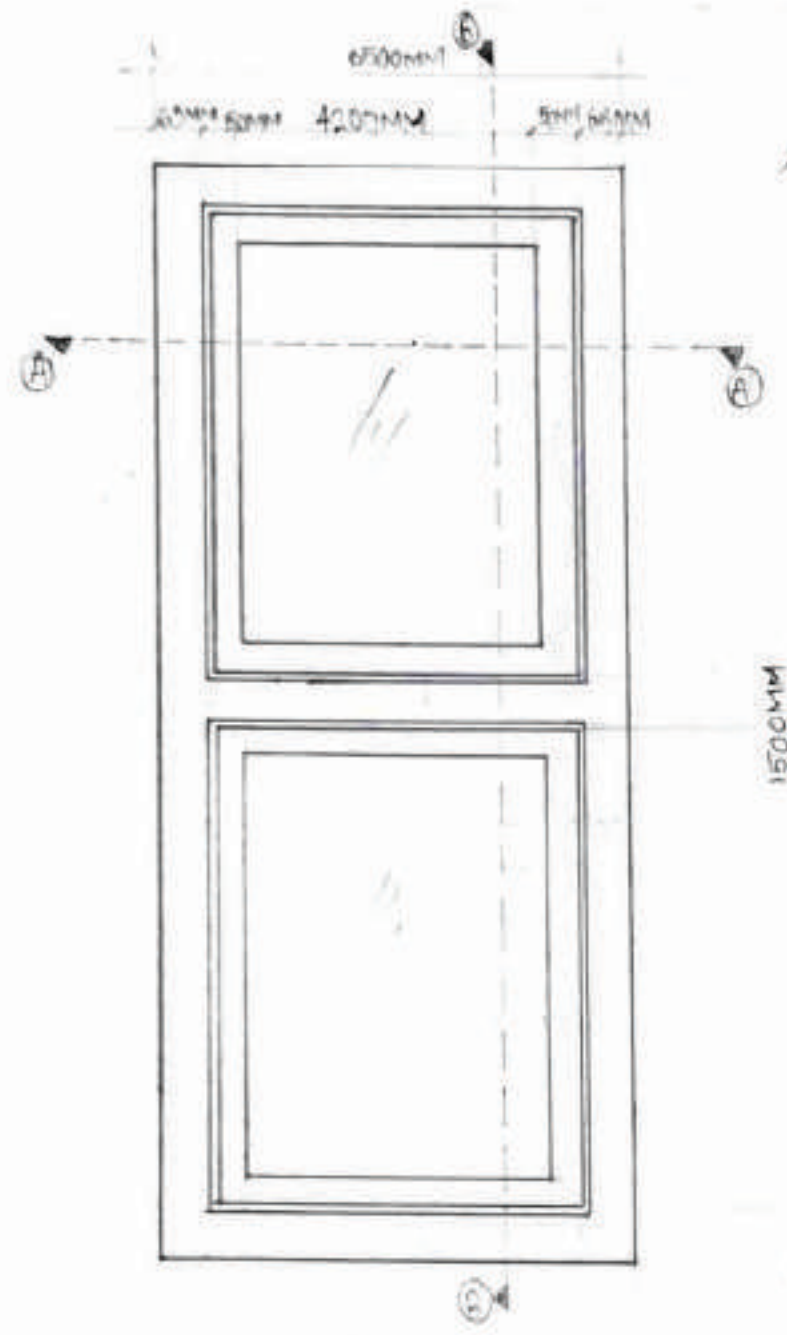




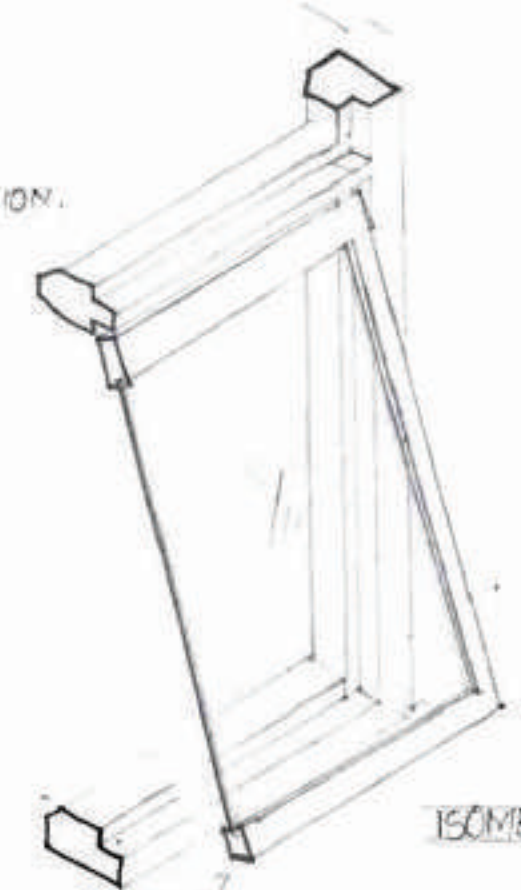
- 18MM EXTERNAL PLASTER
- 230MM THICK BRICK WALL
- 150MM LINTEL + CHAJJA PROJECTING 600MM
- HORN PROJECTING 75MM
- WINDOW FRAME A → DETAIL A.
- SHUTTER FRAME → DETAIL B.
- GLASS PANEL
- MS GRILL ROD
- MS SHUTTER HANDLE.
- MS HOLDFAST
- SHUTTER FRAME FOR GRILL → DETAIL C
- WINDOW FRAME B → DETAIL D
- EXTERNAL BEADING
- INTERNAL BEADING
- FIXED GLASS PANEL
- WINDOW FRAME C - DETAIL E
- SILL (75MM)
- HINGE FOR GLASS SHUTTER.
- HINGE FOR GRILL SHUTTER







230MM THICK WALL  
 100MM LINTEL+CHASTA  
 DOOR FRAME  
 SHUTTER FRAME  
  
 GLASS PANEL  
  
 SHUTTER FRAME  
  
 10MM CLEARANCE FOR SHUTTER OPERATION.  
 WINDOW FRAME  
 HUNG WINDOW OPERATING LEVER



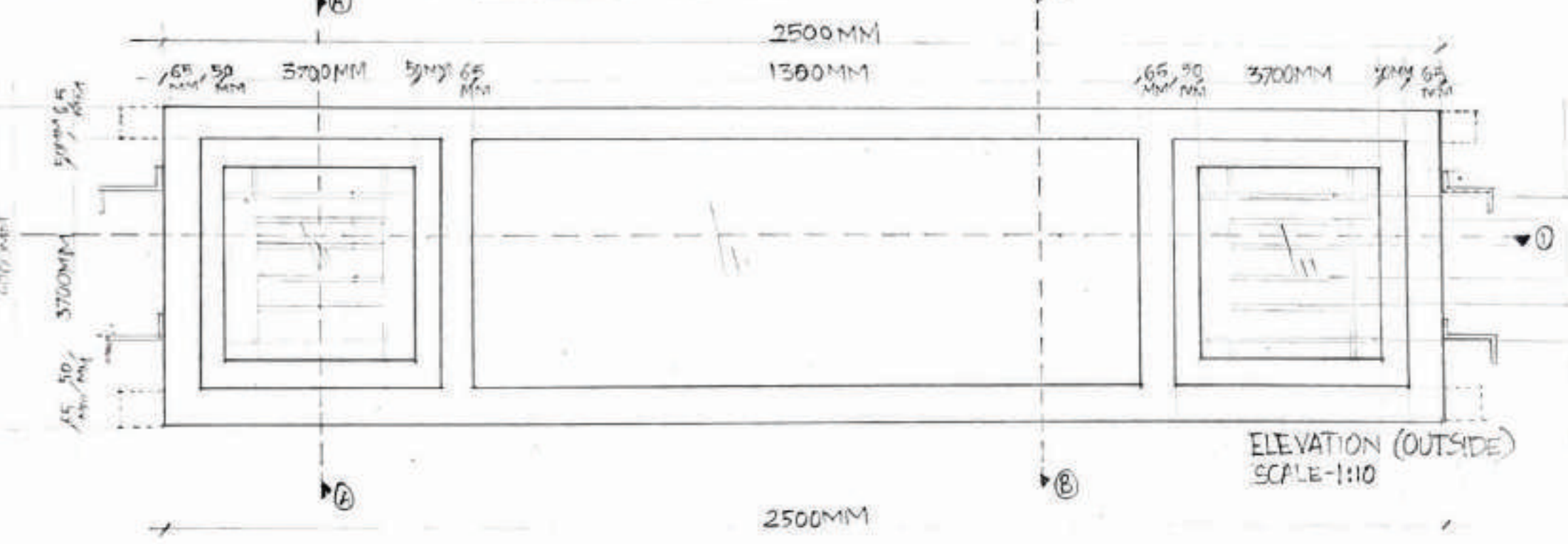
ISOMETRIC VIEW

EXTERNAL PLASTER.  
 WINDOW FRAME  
 75MM SILL

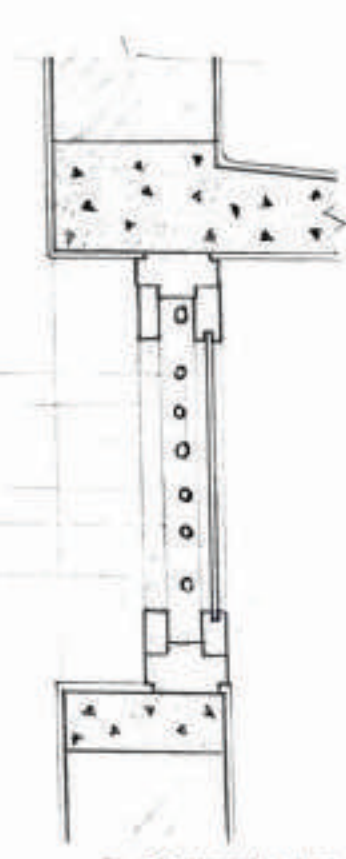


PLAN AT 1750MM

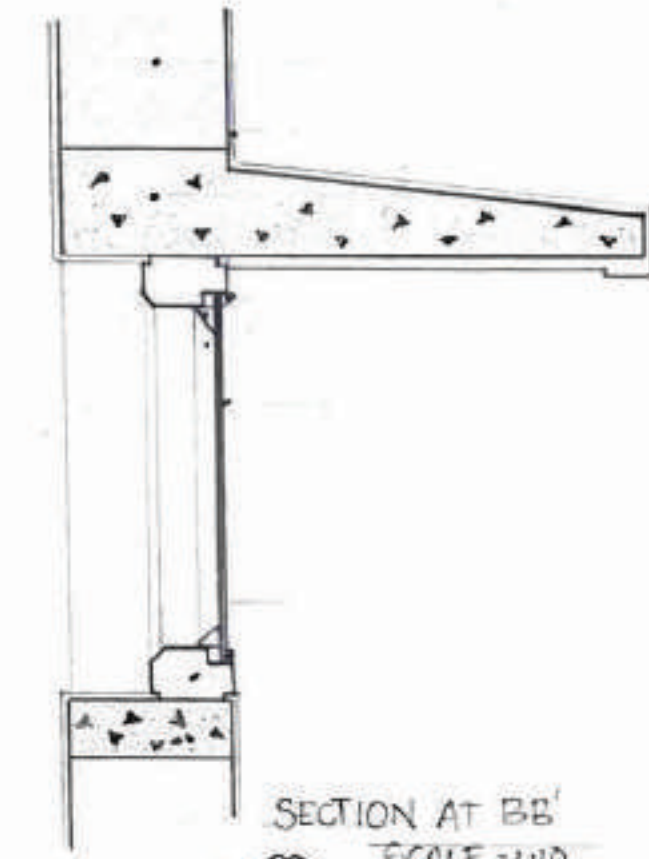
SECTION AT BB'



ELEVATION (OUTSIDE)  
 SCALE-1:10



SECTION AT AA'  
 SCALE-1:10

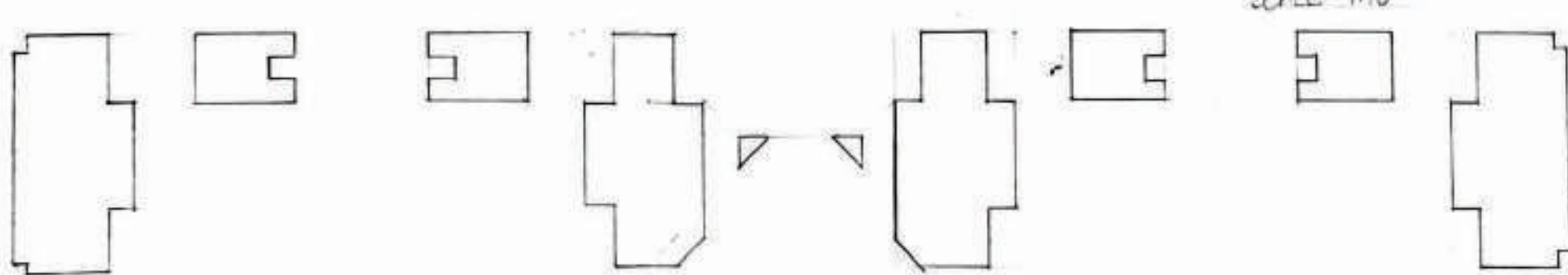


SECTION AT BB'  
 SCALE-1:10

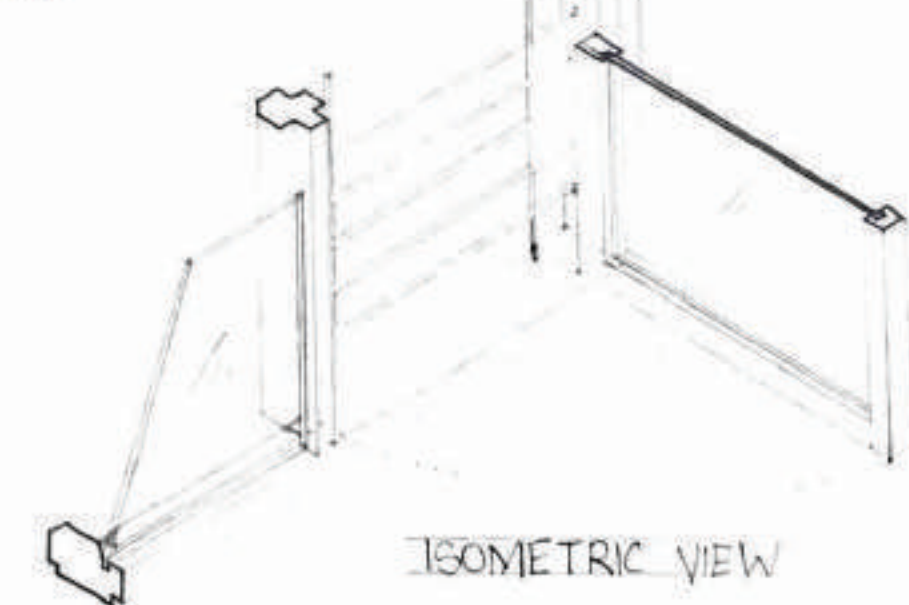
230MM BRICK WALL  
 18MM PLASTER  
 50MM LINTEL AND CHASTA  
 PROTECTING 600MM  
 WINDOW FRAME,  
 INTERNAL BEADING  
 GLASS PANEL  
  
 EXTERNAL BEADING  
 FRAME  
 SILL(75MM)



PLAN AT 1750MM  
 SCALE-1:10



SHUTTER FRAME PROFILES → SCALE-1:3



ISOMETRIC VIEW