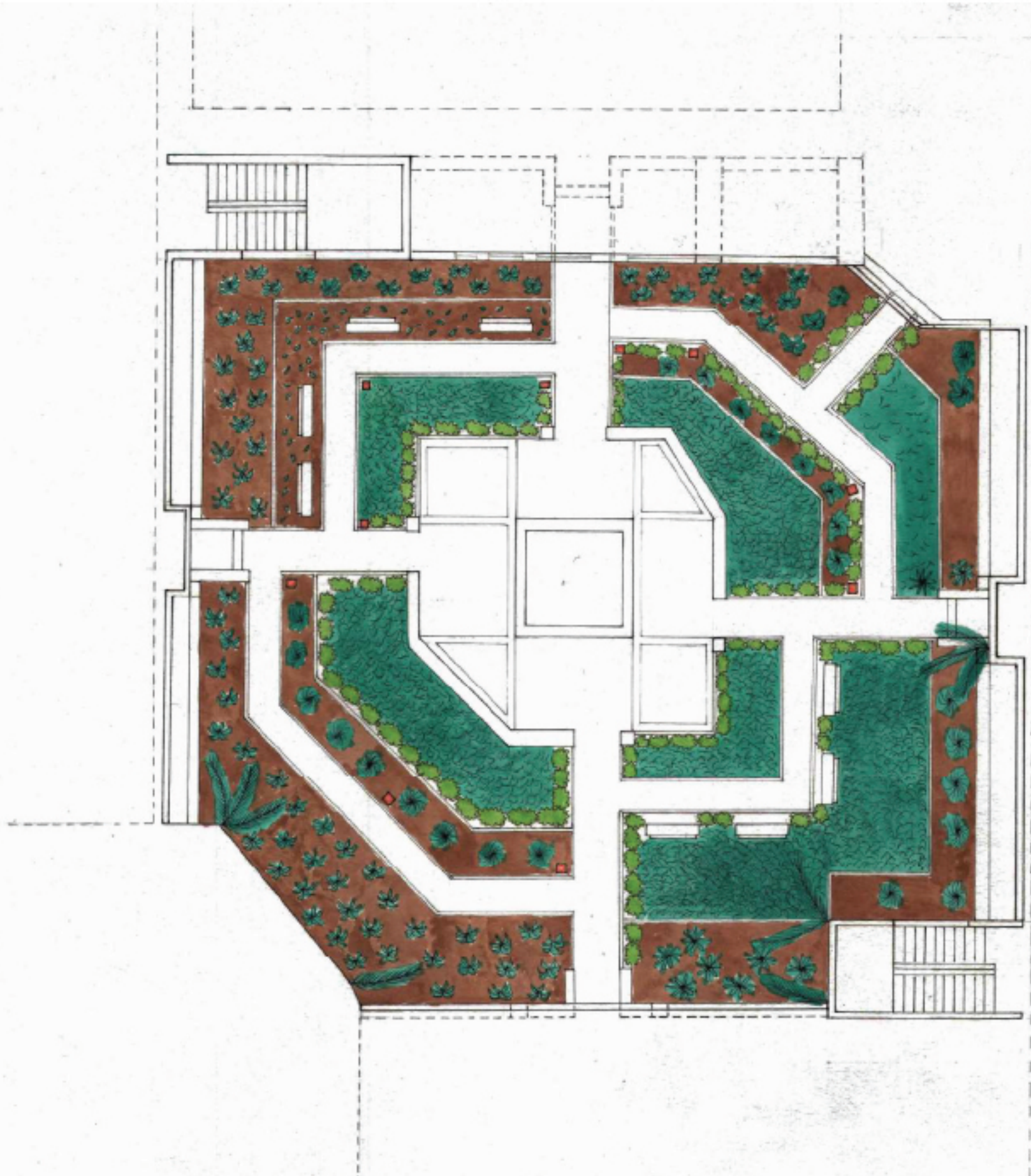


**ARCHITECTURAL DESIGN III STUDENT PORTFOLIO**  
III SEMESTER  
NOV '22 -FEB '23



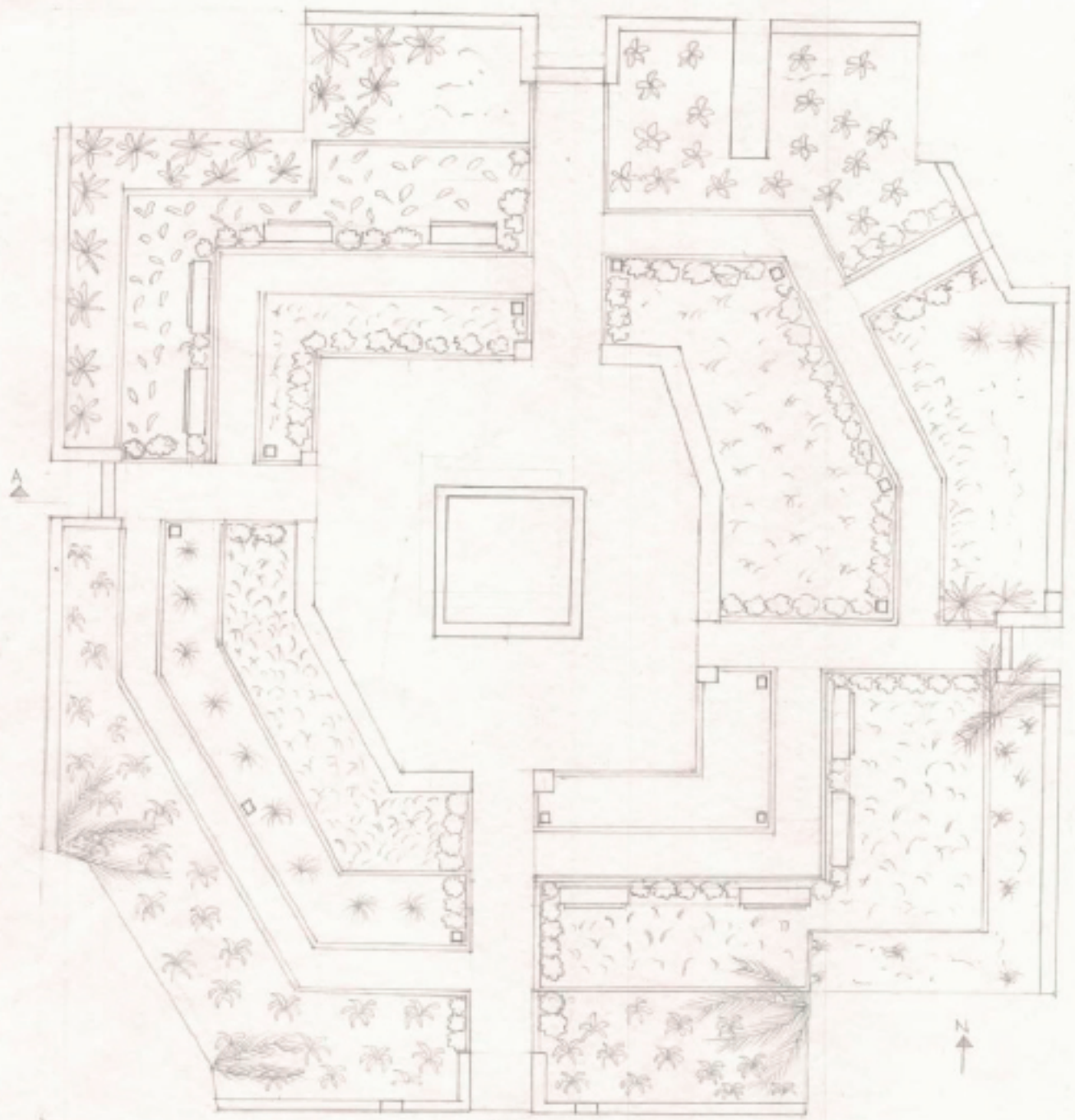
- MATERIALS**
- GRANITE BENCHES
  - RCC
  - BLACK GRANITE FLOORING
  - WOODEN AND GLASS DOORS

- TYPES OF PLANTS**
- PEACE LILY
  - ANTHURIUM
  - BEGONIA
  - SYNGONIUM
  - DURANTHA
  - BUSH CLOCK VINE
  - CARDWELL LILY
  - BLACK ADULSA
  - ZEBRINA
  - HELICONIA

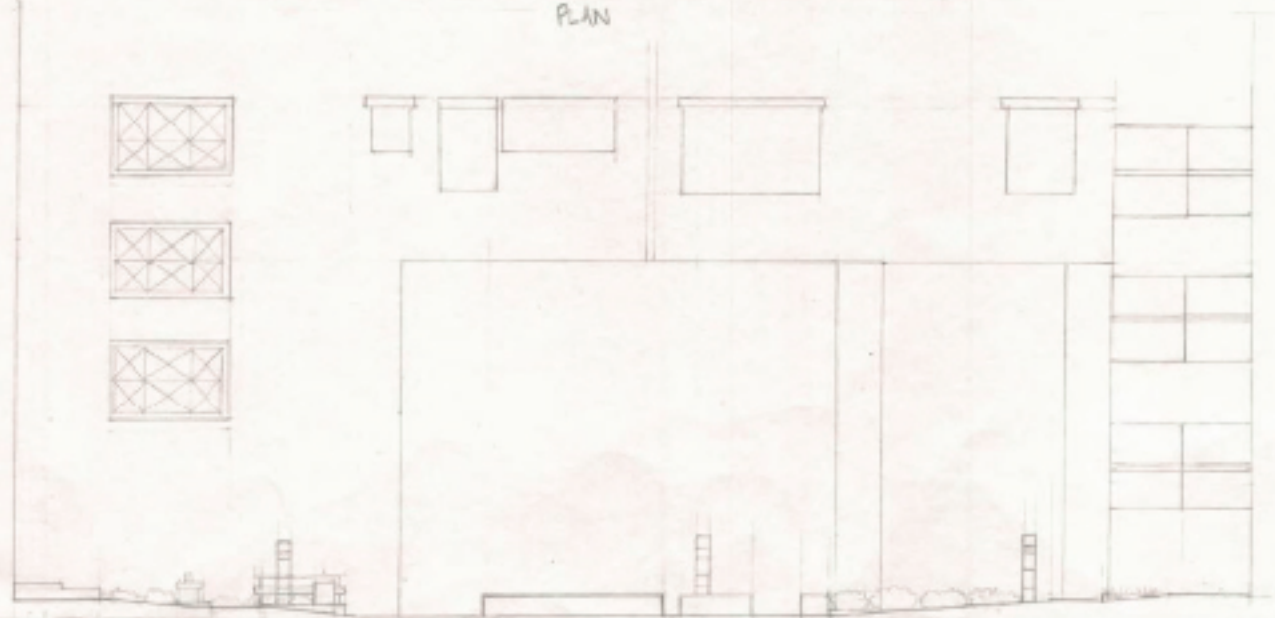
PLAN  
SCALE - 1:100

BRIGADE MILLENNIUM, JACARANDA





PLAN



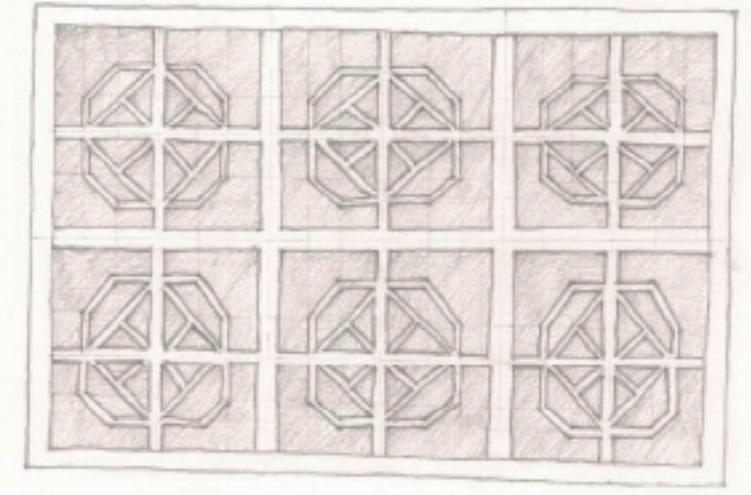
AA SCALE - 1:100

CLIMATE MODULATION

- GATES IN ALL FOUR DIRECTIONS PROVIDE AN EXCELLENT BREEZE EVEN IN SUMMERS
- JAALIS KEEP THE STAIRCASE AREAS WELL-LIT

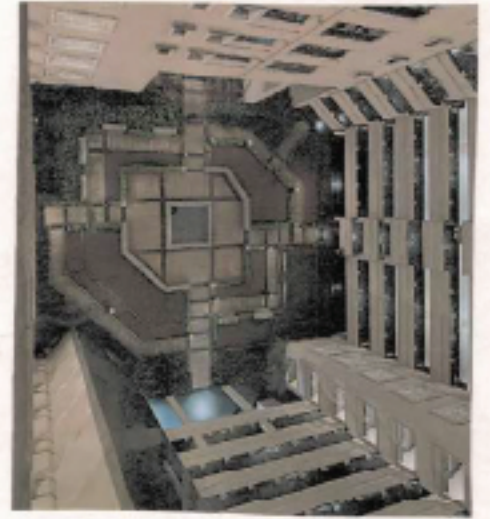
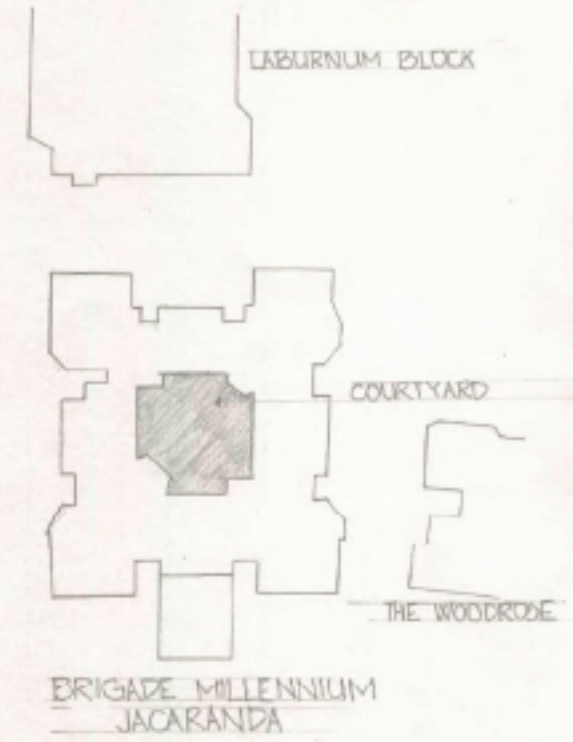
MATERIALS

- GRANITE BENCHES
- IRCC
- BLACK GRANITE FLOORING
- WOODEN AND GLASS ROOFS



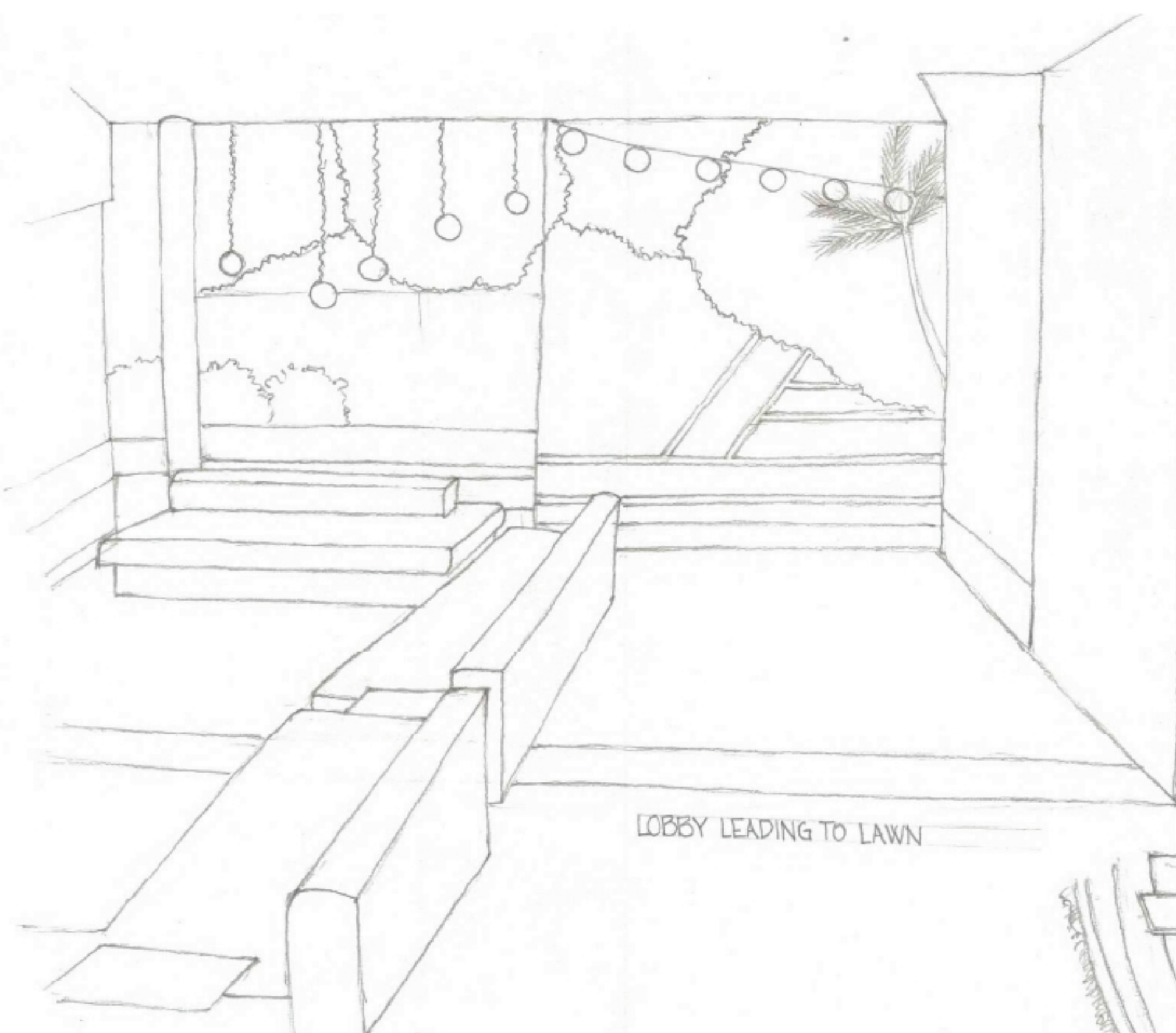
JAALI

SITE LOCATION

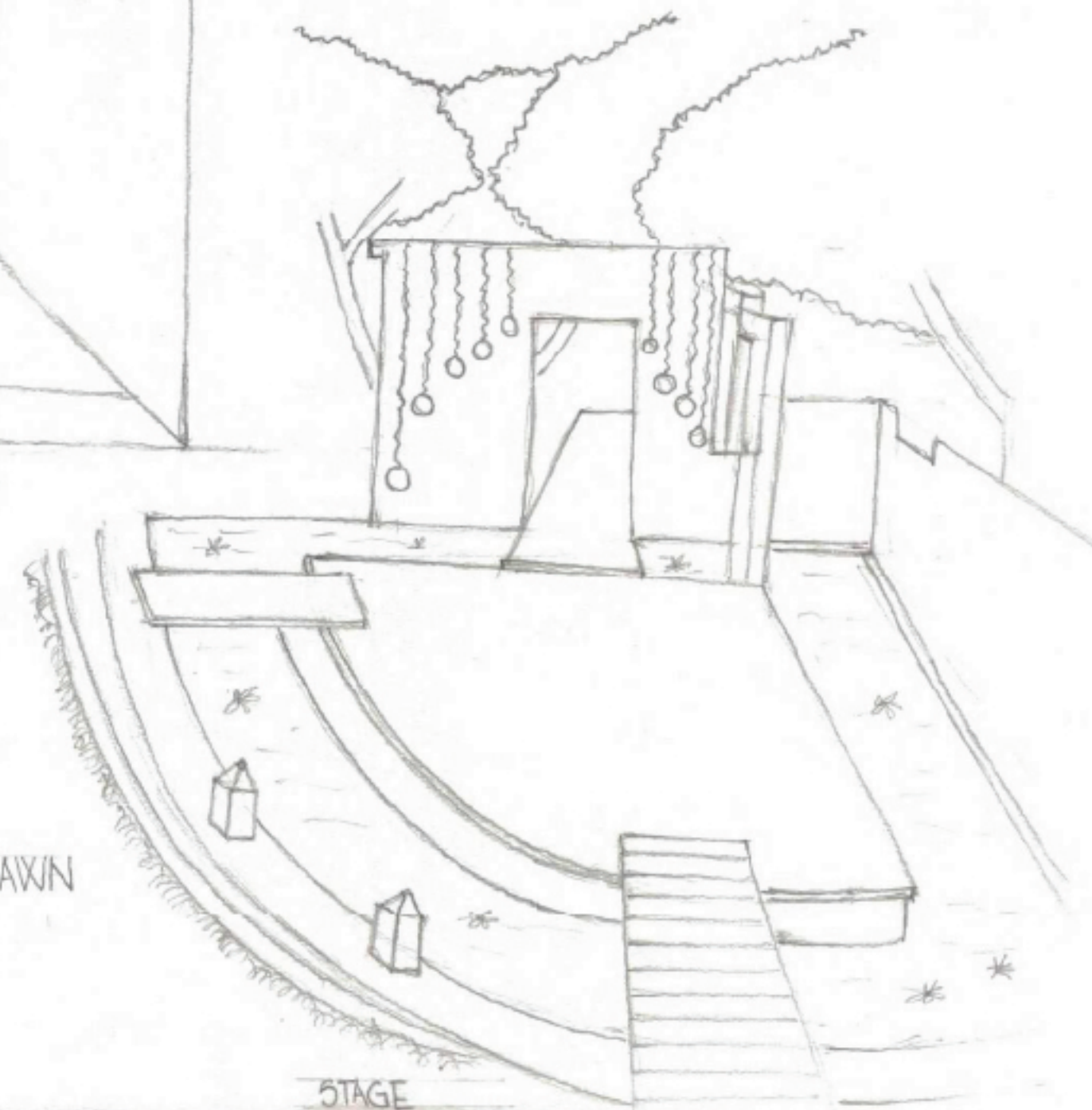


UNDERSTANDING CLIMATE,  
COMMUNITY AND MATERIALS





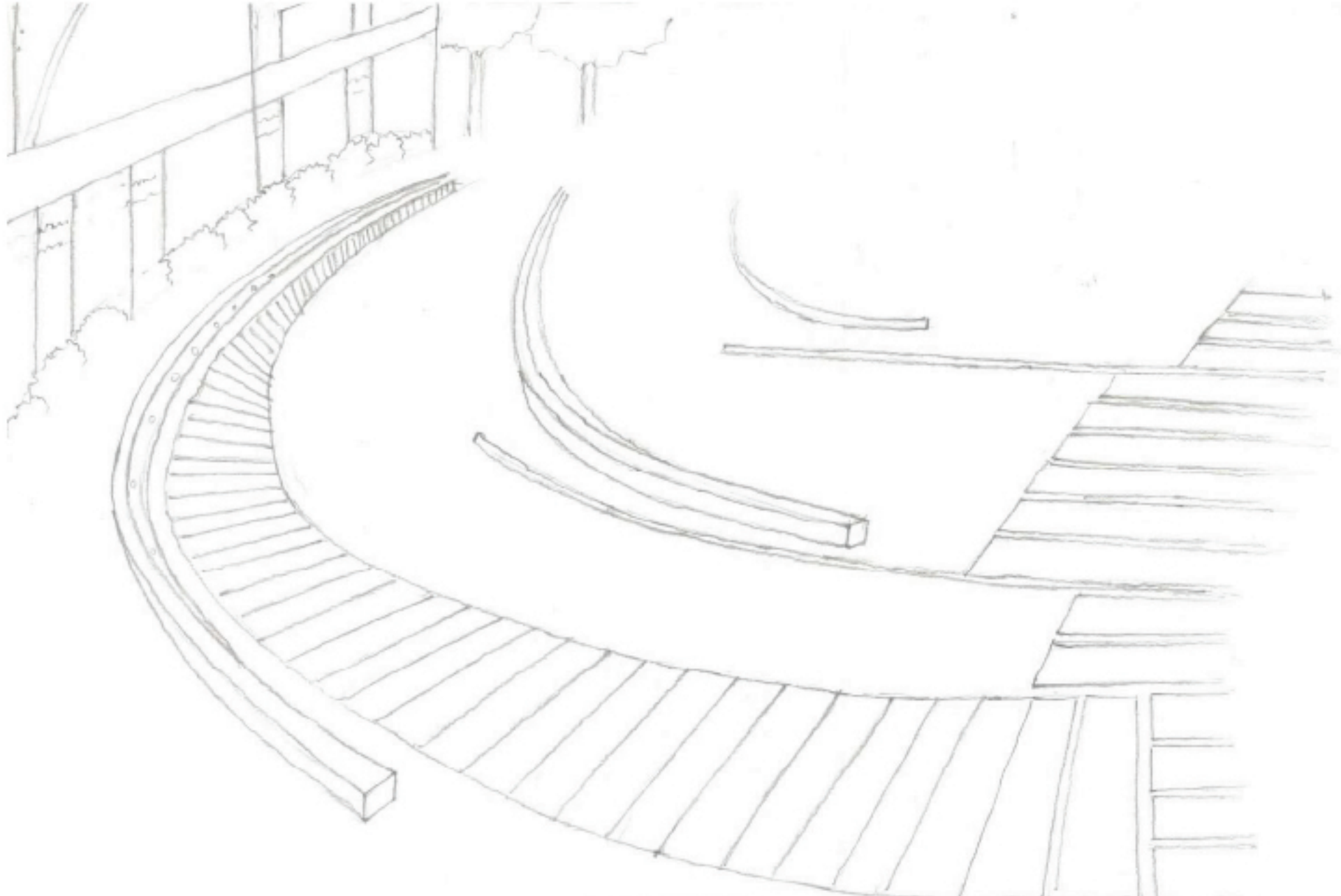
LOBBY LEADING TO LAWN



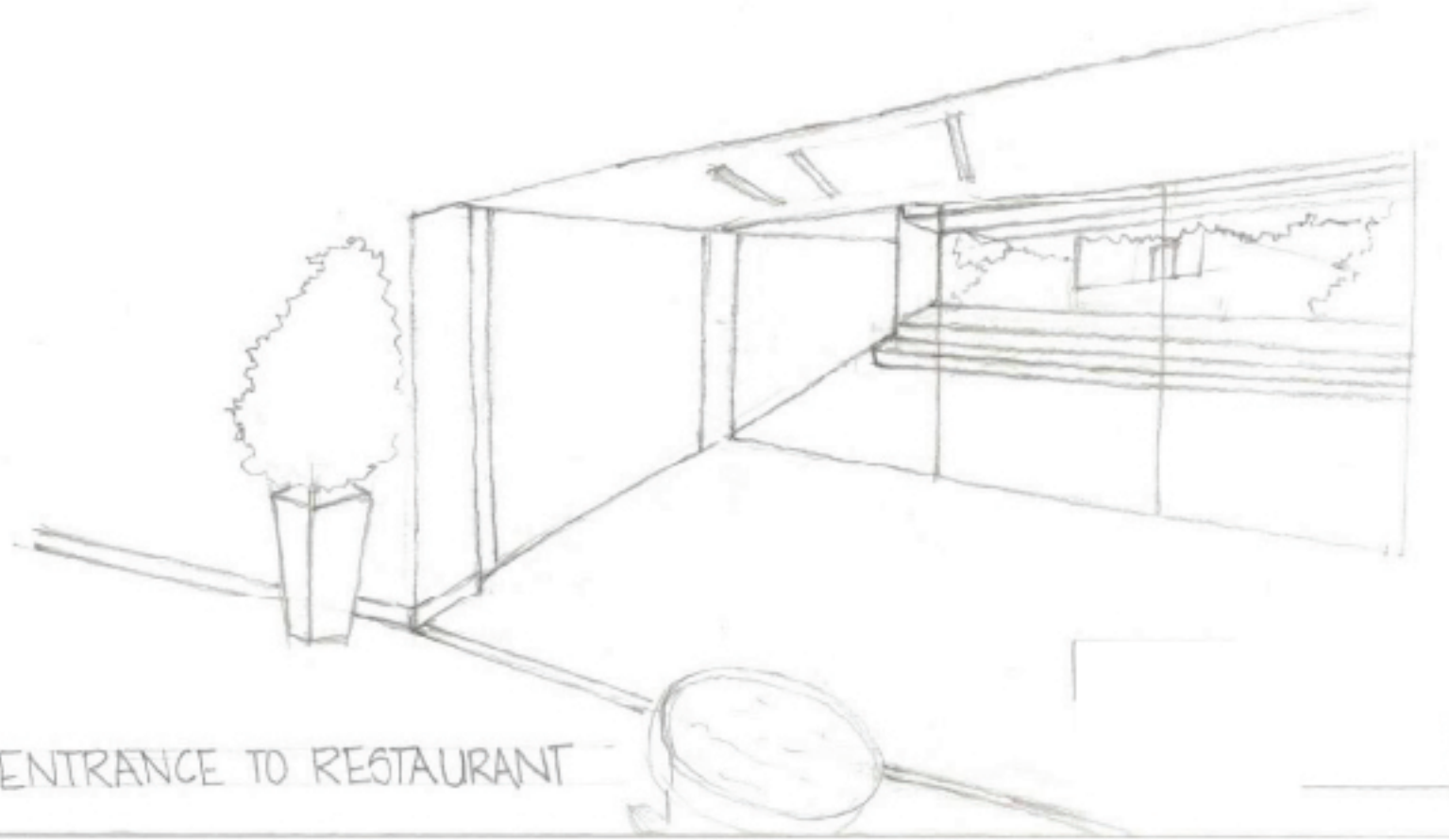
STAGE

COMMUNITY SPACES: BANQUET HALL, CONFERENCE ROOM, TERRACE GARDEN, LAWN

THE WOODROSE CLUB, JP NAGAR



LAWN AREA



ENTRANCE TO RESTAURANT



BUILDING MATERIAL: SAND MARBLE



RAM TIRATH TEMPLE, AMRITSAR



PLAN

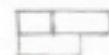
ARRANGEMENT OF BRICKS



NO GAP

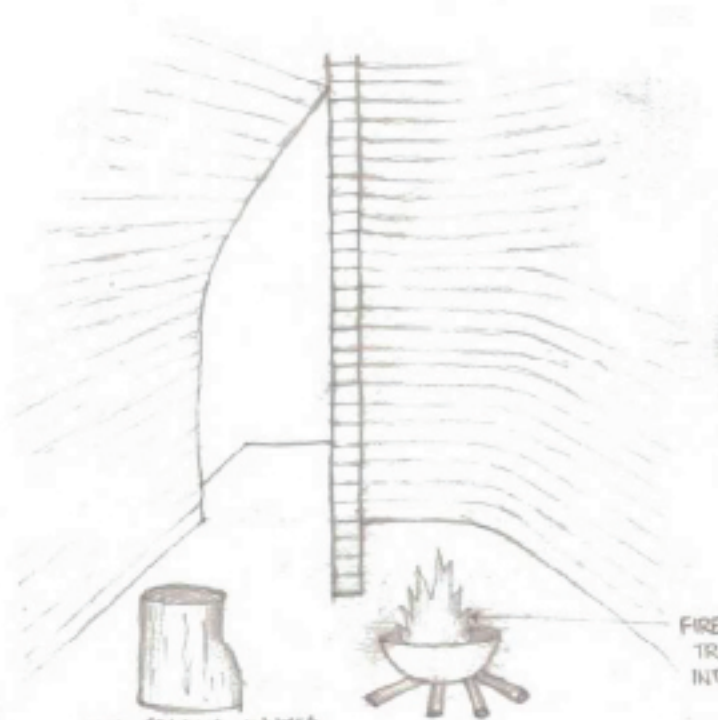
SMALLER VOIDS

LARGE VOIDS



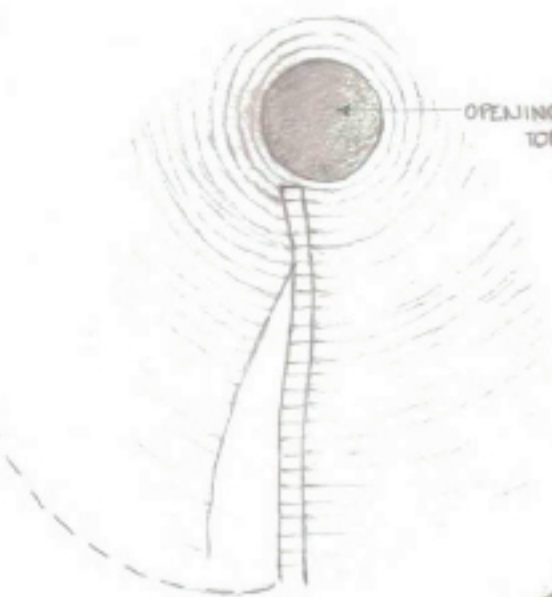
HALF BRICK AT THE BEGINNING OF ALTERNATE COURSES

OPENING AT THE TOP



FIRE PIT IN THE CENTRE TRIGGERING WARMTH AND INTIMACY

LOW SEATING INVITED PEOPLE TO SIT, TALK, RELAX AND EXCHANGE IDEAS



ONE WALL WRAPPED AROUND ITSELF TO FORM A CONE. MADE USING WASTE-EDGED BRICKS OVER A TIMBER FRAMEWORK.



FIRE PIT LIGHTS UP THE PAVILION IN THE EVENING MAKING IT APPEAR LIKE A LANTERN.



TIMBER FRAMEWORK OVER WHICH BRICKS ARE LAYED

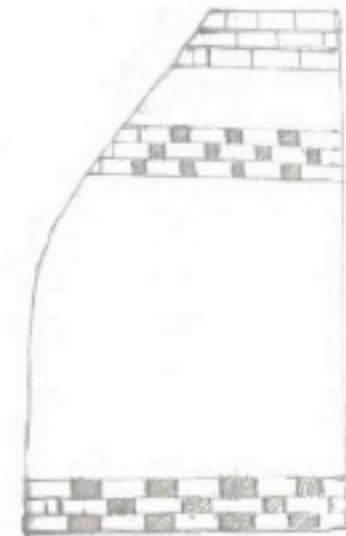
VERTICAL SUPPORT INSIDE (BELOW OPENING AT THE TOP)

BUILT IN 2016 BY STUDIO NINE DOTS IN COLLABORATION WITH STONECYCLING  
 OPEN CONICAL PAVILION MADE OF BRICKS CENTRED AROUND A FIREPLACE.  
 AIMS TO CONNECT PEOPLE AND CREATE SPACE FOR STORYTELLING AND DIALOGUE  
 TEMPORARY AND PORTABLE PAVILION

THE TRUE TALKER, AMSTERDAM



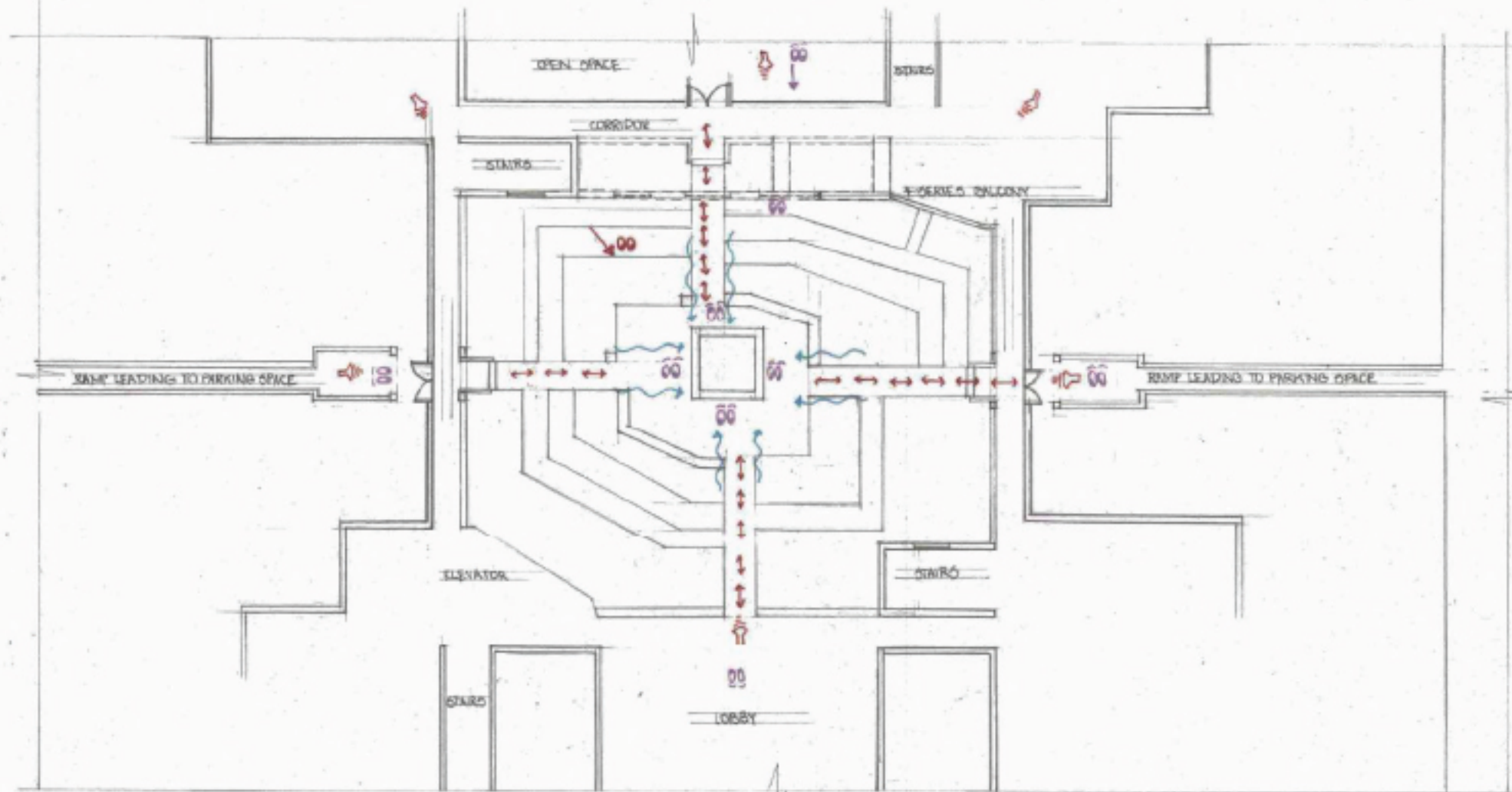
FIREPLACE IN THE CENTRE LIGHTS UP THE PAVILION IN THE EVENING



INNER WALL THAT TAPERES TOWARDS THE TOP







PLAN  
SCALE=1:1200  
RESPONSE TO SITE

RESPONSE TO CASE STUDY



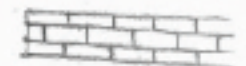
CURVED WALL TAPERING TOWARDS THE TOP



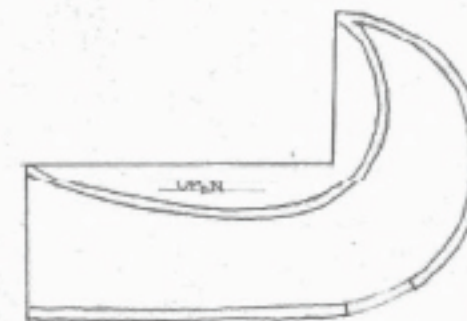
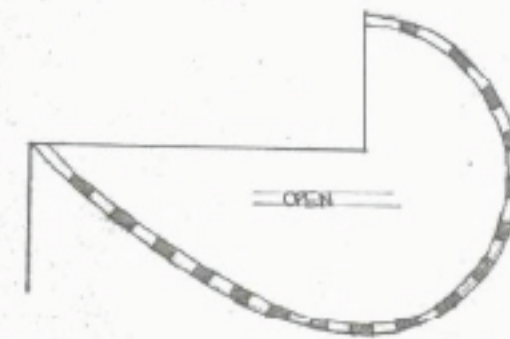
OPENING AT THE TOP



ARRANGEMENT OF BRICKS  
• VOIDS  
• HALF BRICK IN EVERY ALTERNATE COURSE



NO GAPS TOWARDS THE OPENING



ITERATIONS  
SCALE=1:1100



EXISTING ACTIVITIES

- WALKING
- SITTING
- PLAYING
- GATHERING
- LOOKING AT FOUNTAIN

CORNER PLACEMENT

- PROS:
- DOES NOT BLOCK MAJOR PEDESTRIAN MOVEMENT
  - FOUNTAIN CAN STAY IN PLACE
  - HIDDEN FROM VIEW OF 4-SERIES FLATS, SO IT CAN BE MORE OPEN
  - DOES NOT AFFECT EXISTING ACTIVITY
  - PROVIDES VIEW OF FOUNTAIN

- CONS:
- NO DIRECT SUNLIGHT; DARK AND NOISY AREA
  - REDUCES FIRST FLOOR JANU
  - LESS WIND FLOW



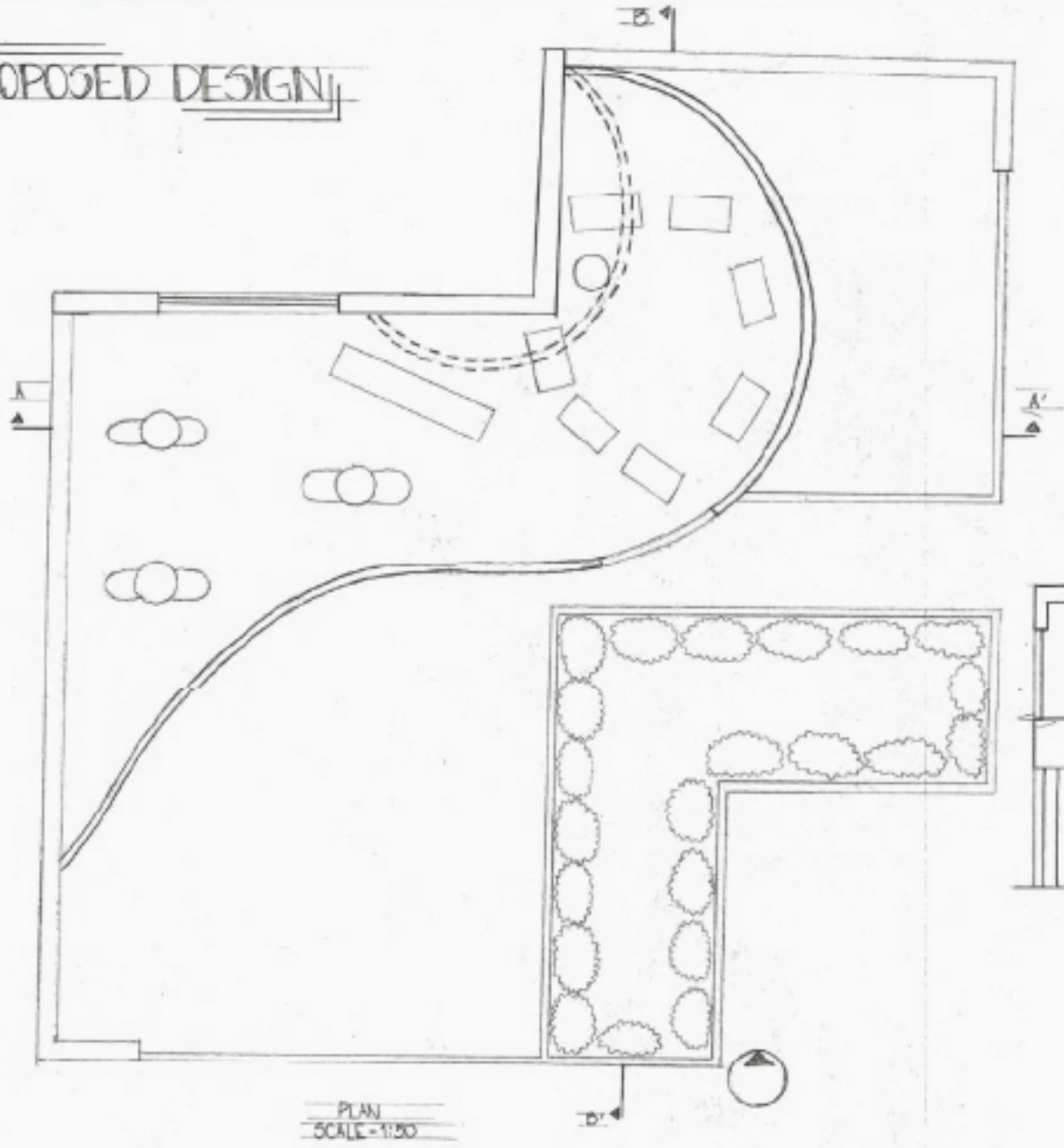
CENTRAL PLACEMENT

- PROS:
- VIEW OF ALL FOUR DIRECTIONS
  - MAXIMUM WIND FLOW

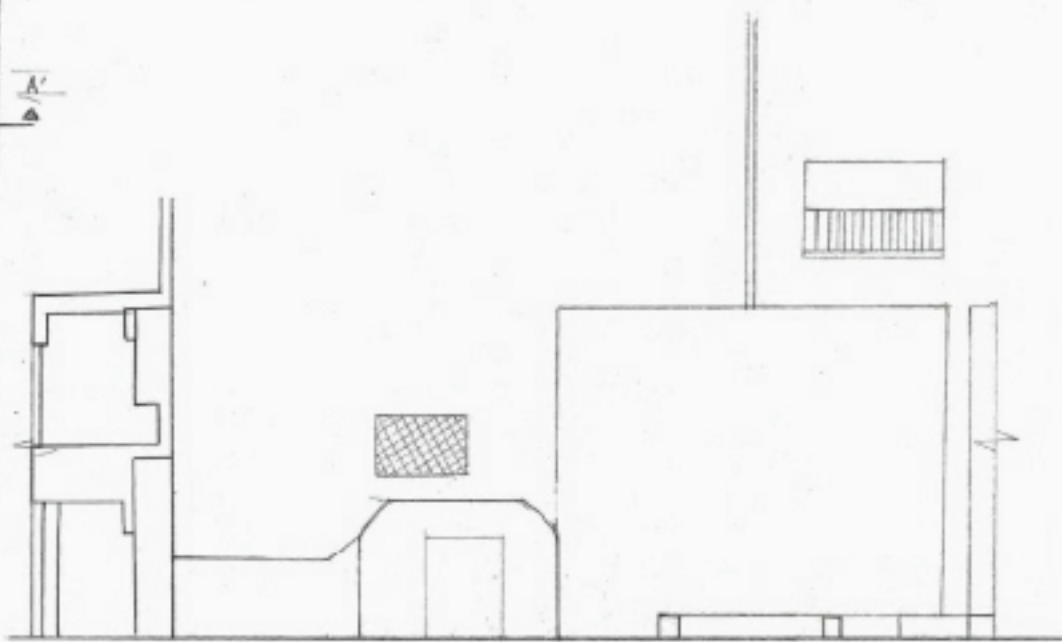
- CONS:
- CAN BE SEEN FROM OUTSIDE AND FROM 4-SERIES
  - FOUNTAIN MAY NEED TO BE REMOVED

SITE ANALYSIS AND DESIGN IDEATION

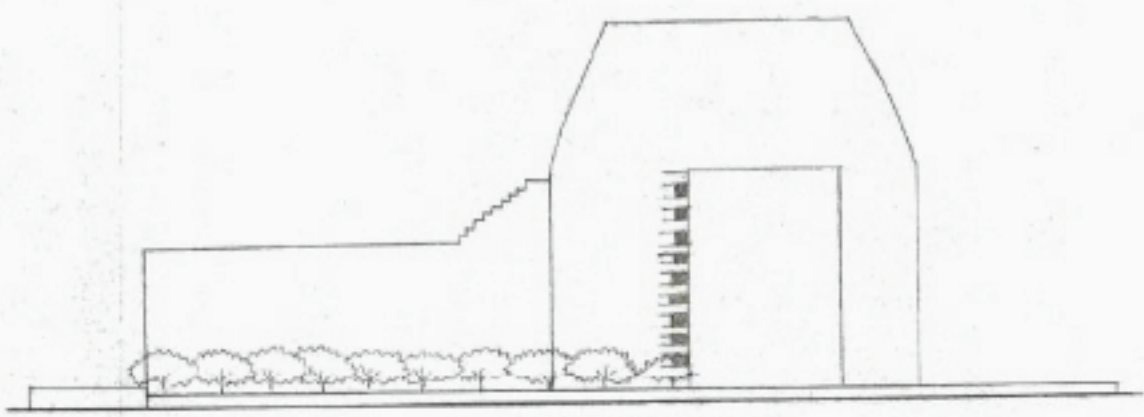
PROPOSED DESIGN



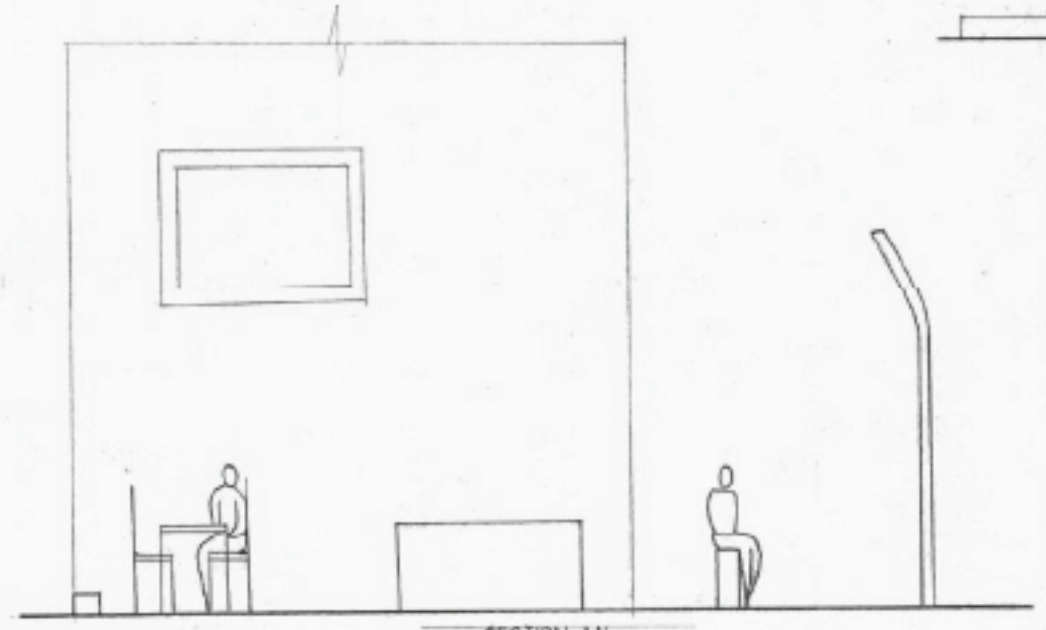
PLAN  
SCALE-1/200



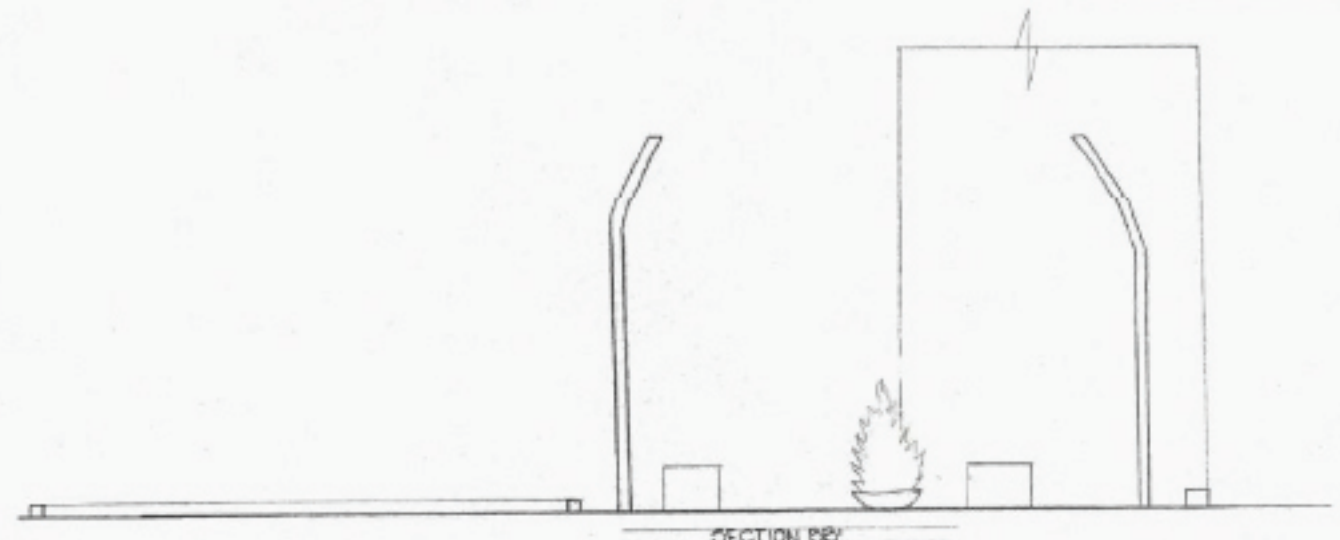
SECTIONAL ELEVATION  
SCALE-1/1000



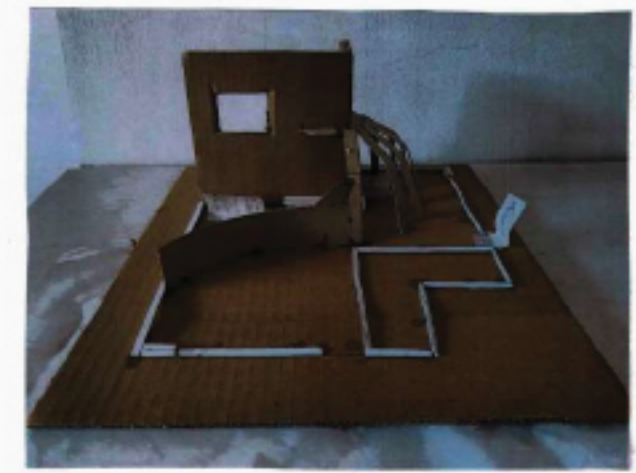
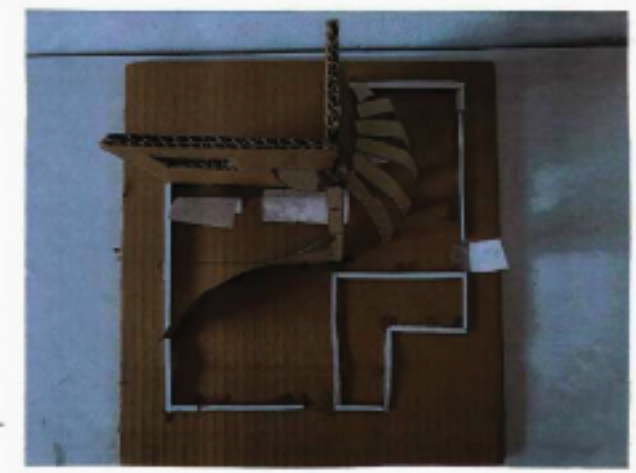
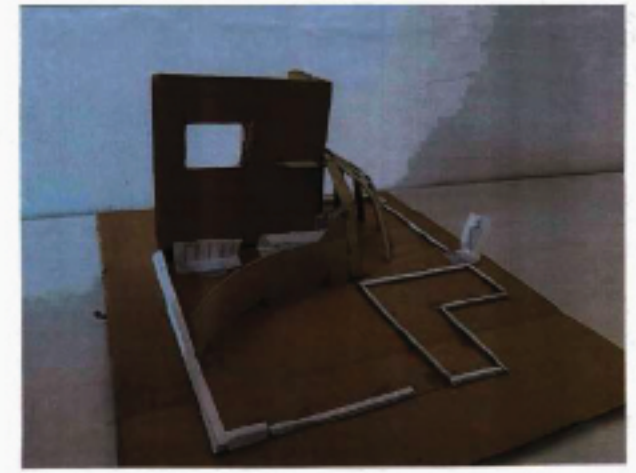
FRONT ELEVATION

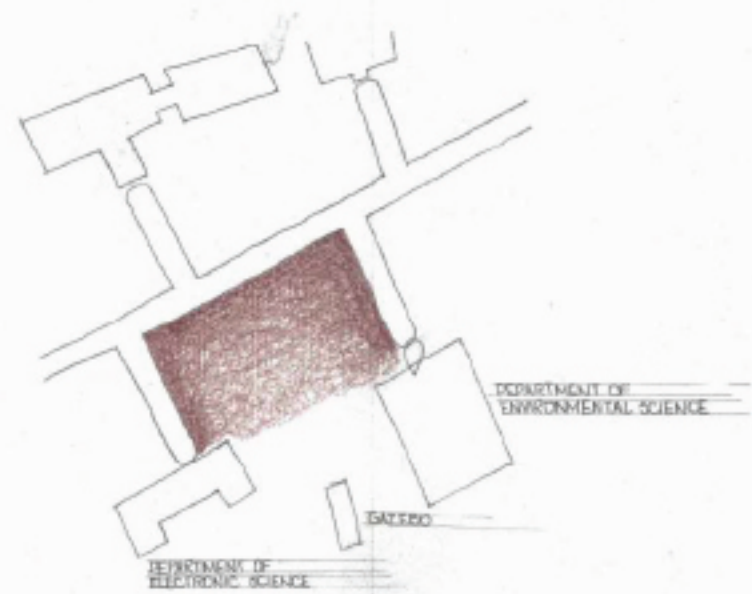
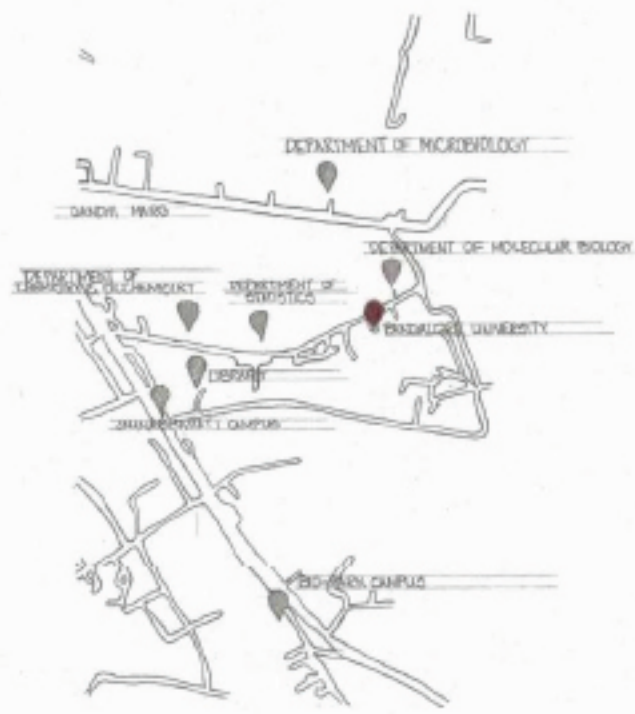


SECTION AA



SECTION BB

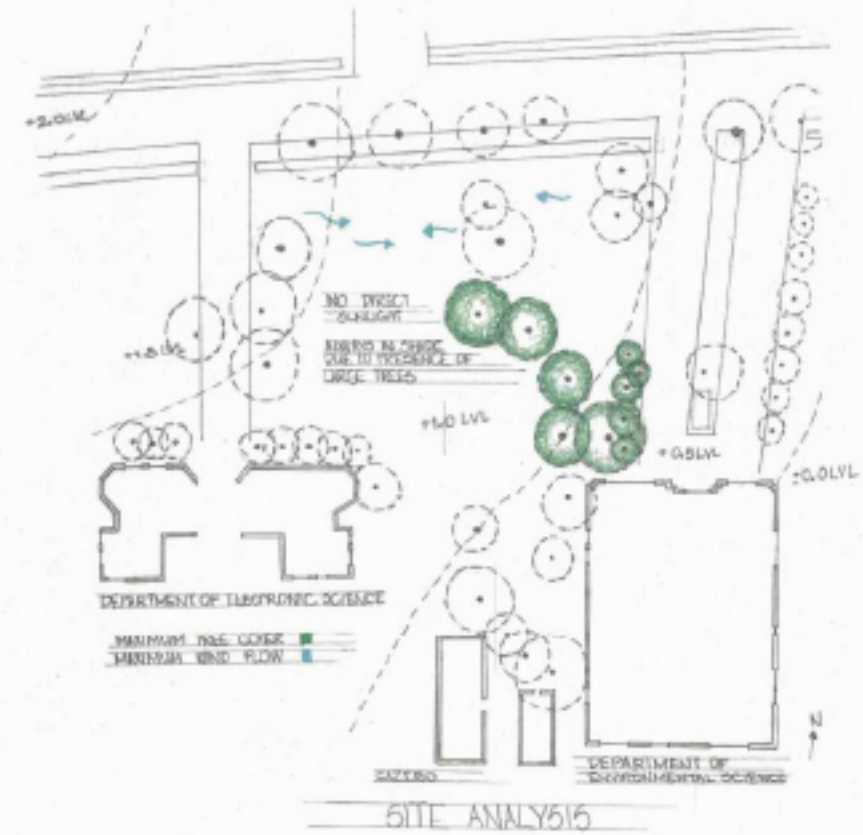




BANGALORE UNIVERSITY  
LOCATION MAPS  
SITE LOCATION



DEPARTMENT OF ENVIRONMENTAL SCIENCE



STUDENT CENTRE - POSSIBLE ACTIVITIES

- SPORTS - MEETING ROOM FOR SPORTS CLUB
- STORAGE
- INDOOR GAMES
- RECREATION ROOM
- SWIMMING POOL
- CLUB HOUSE
- RESTAURANT
- STUDENT HOUSE
- STUDENT OFFICES
- STUDENT CLUB
- STUDENT GALLERY



DEPARTMENT OF ELECTRONIC SCIENCE

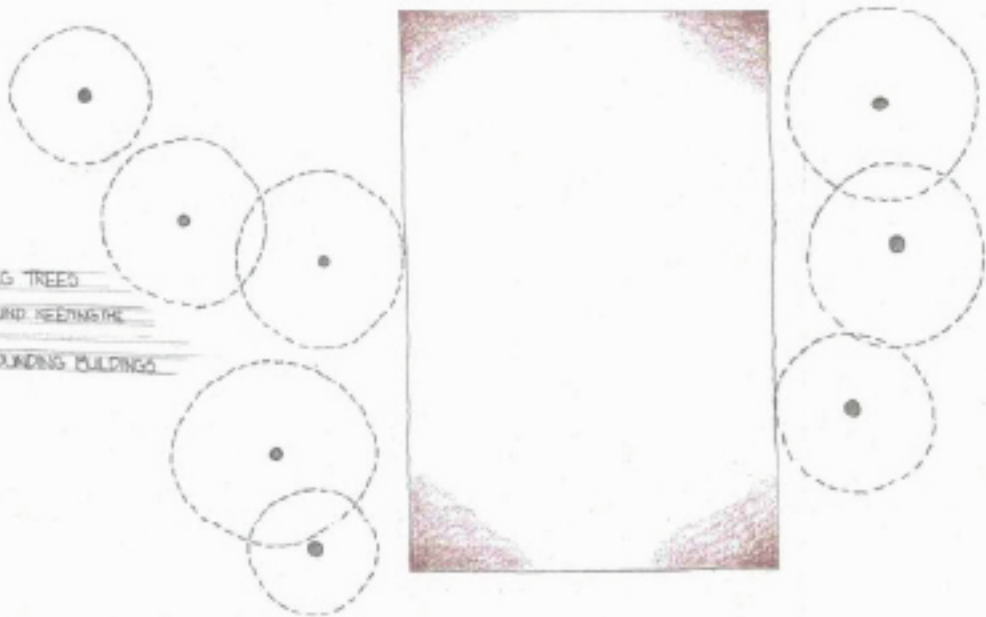


GATEWAY

SITE LOCATION AND ANALYSIS

IDENTIFYING SPACE IN THE SITE

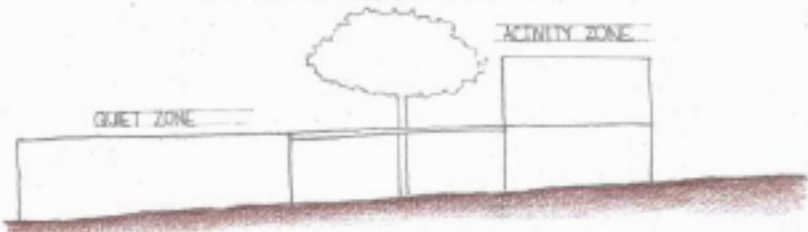
MINIMAL DISRUPTION TO EXISTING TREES  
 SURROUNDED BY TREES ALL AROUND MEETING THE REGION COOL  
 EASILY ACCESSIBLE TO FOUR SURROUNDING BUILDINGS



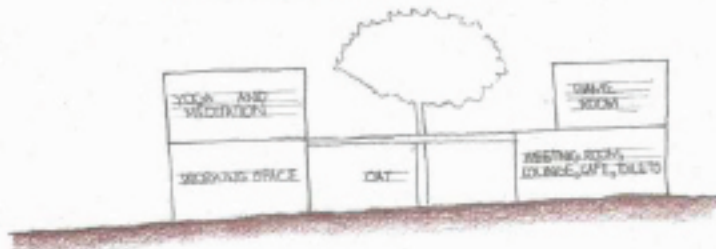
LEVELS - RESPONSE TO CONTOURS



BRIDGE TO CONNECT THE TWO BLOCKS  
 CAN'T GO UP ACTIVITY ZONE

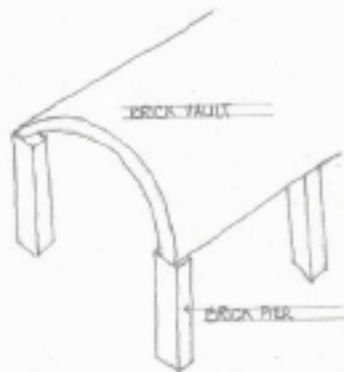


CON: TRYING TO MAKE A LARGE CARPARK AT BRIDGE SIDE

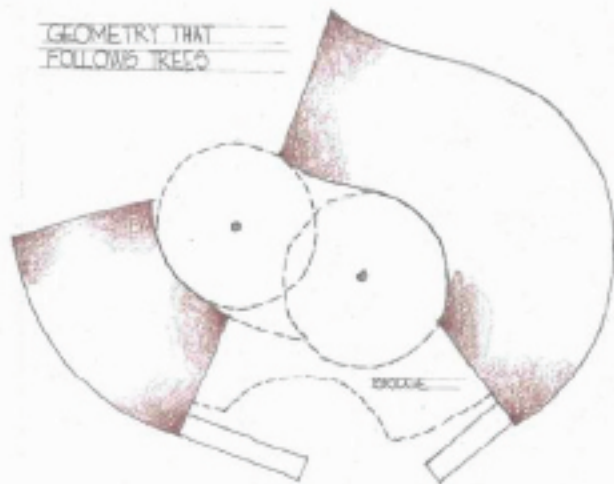


STEPS CONNECTING THE TWO BLOCKS AT GROUND FLOOR LEVEL

INTEGRATION OF BRICKS



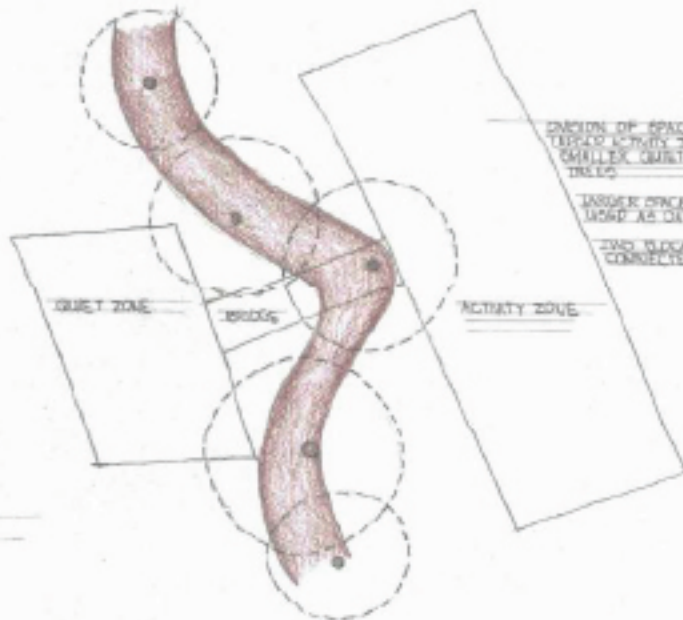
GEOMETRY THAT FOLLOWS TREES



RESPONSE TO TREES - TREES AS DIVIDERS

INTERACTIONS BETWEEN TREES  
 SPACE AROUND TREES USED AS A CORRIDOR

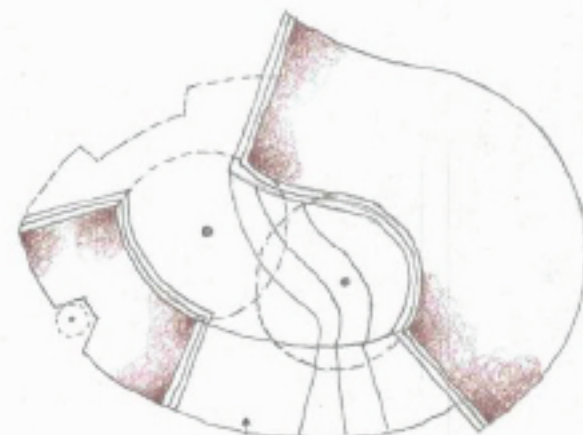
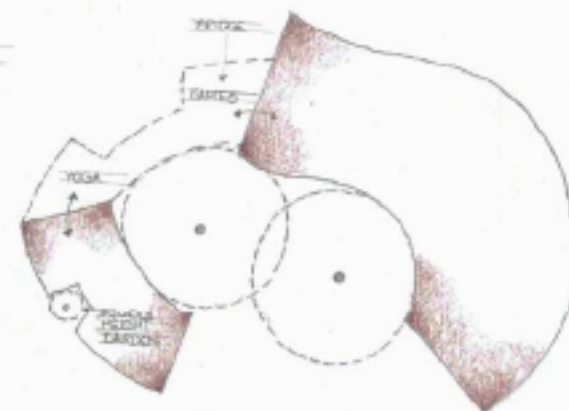
CONCAN BUILD ONLY UP TO UNDER FOULAGE SO AS TO NOT DISTURB THE ROOTS



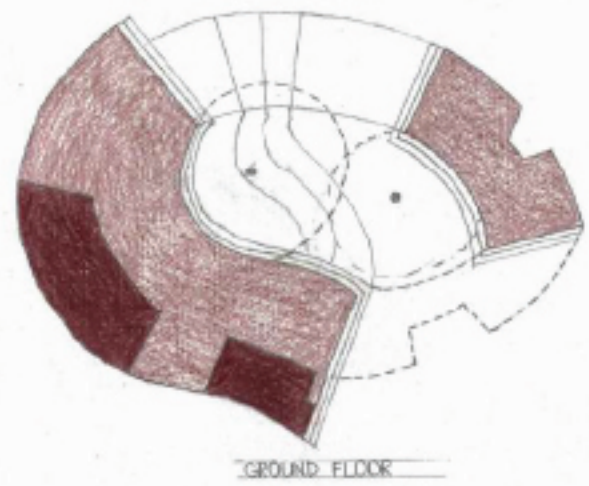
DIVISION OF SPACE INTO A QUIET ACTIVITY ZONE AND A CHILLER QUIET ZONE AROUND TREES

LARGER SPACE IN THE CENTRE USED AS DAY

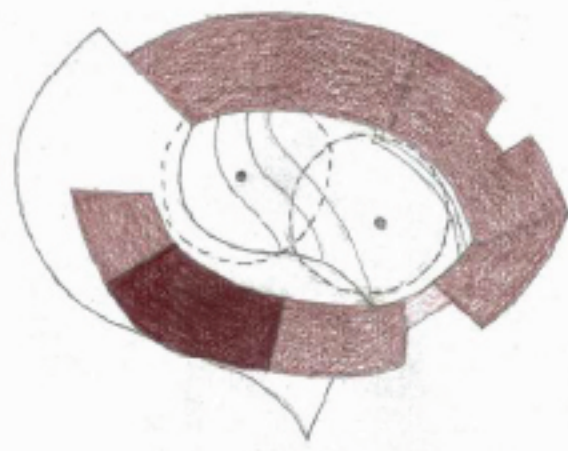
TWO BLOCKS ARE CONNECTED BY A BRIDGE



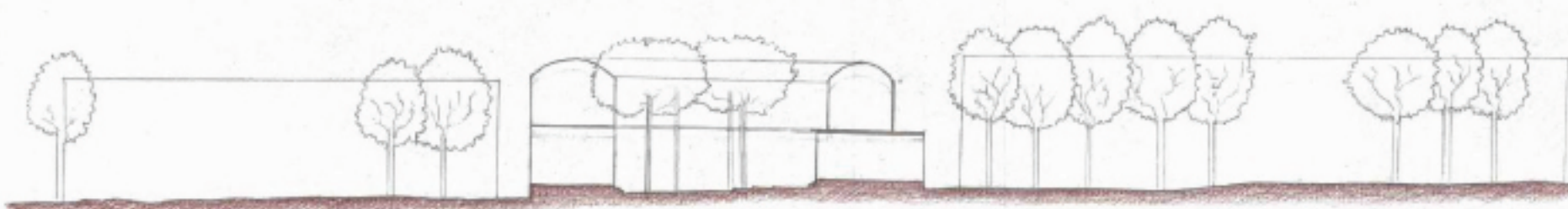
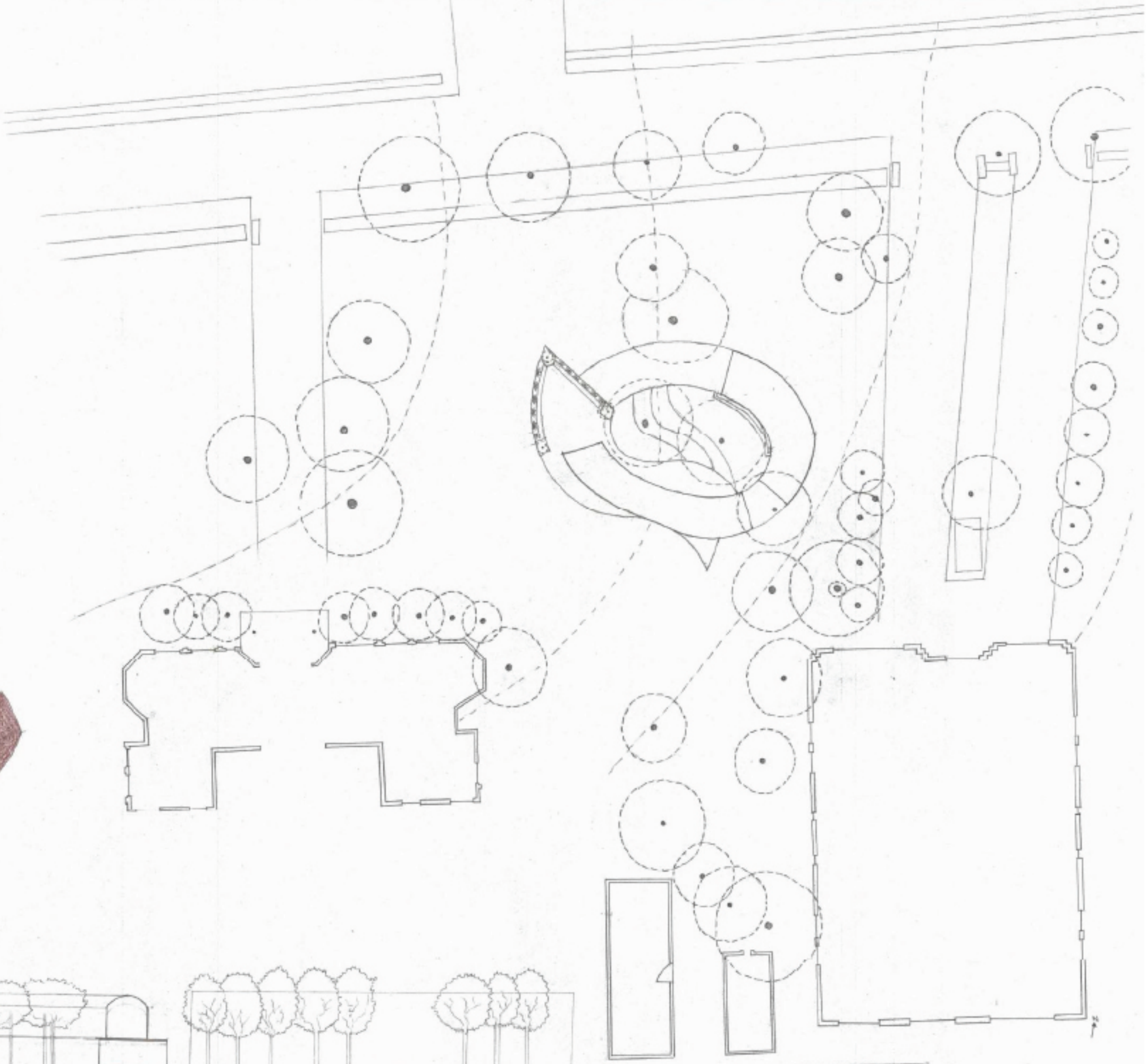
ORGANISATION DIAGRAMS



GROUND FLOOR

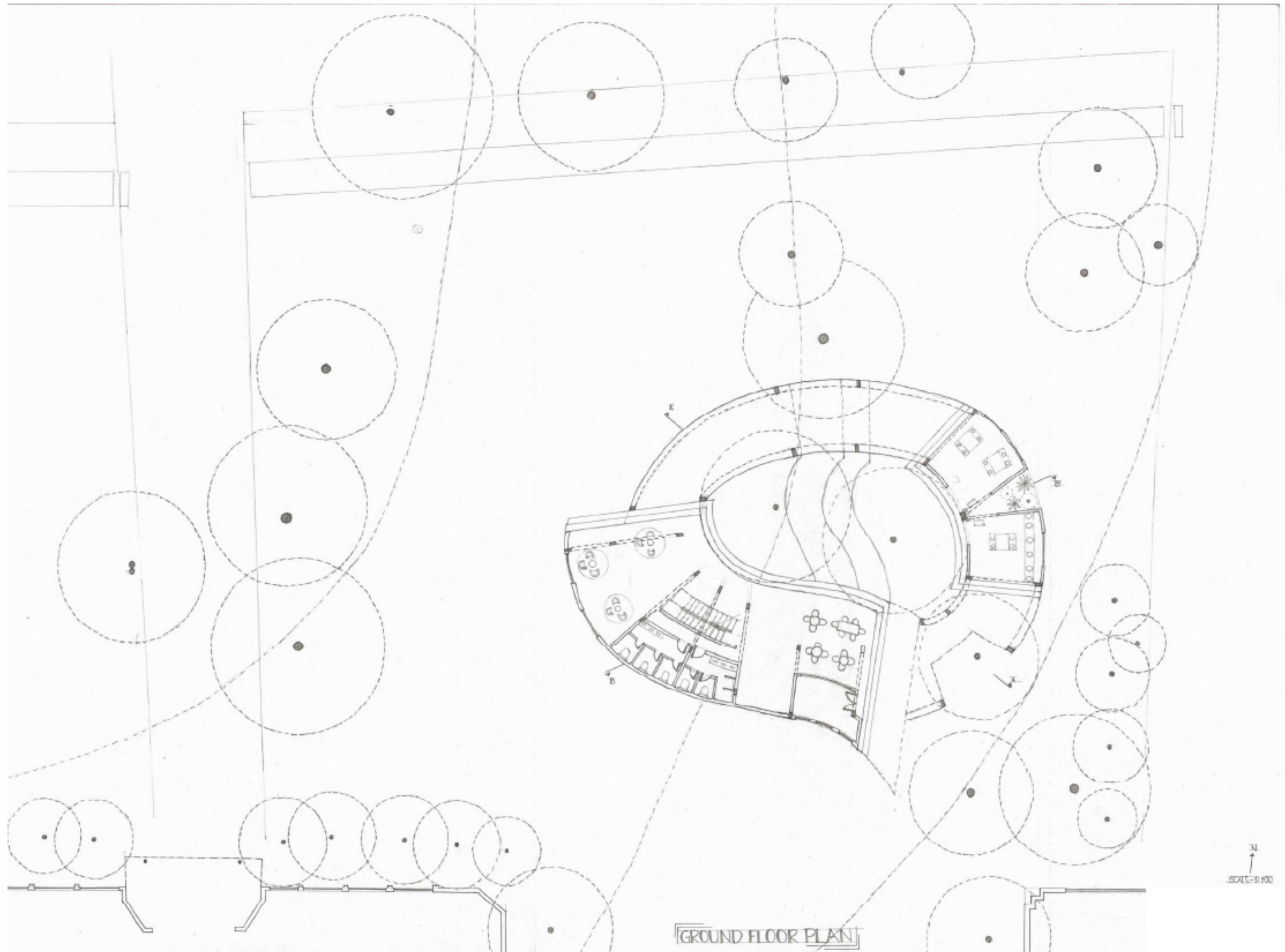


FIRST FLOOR



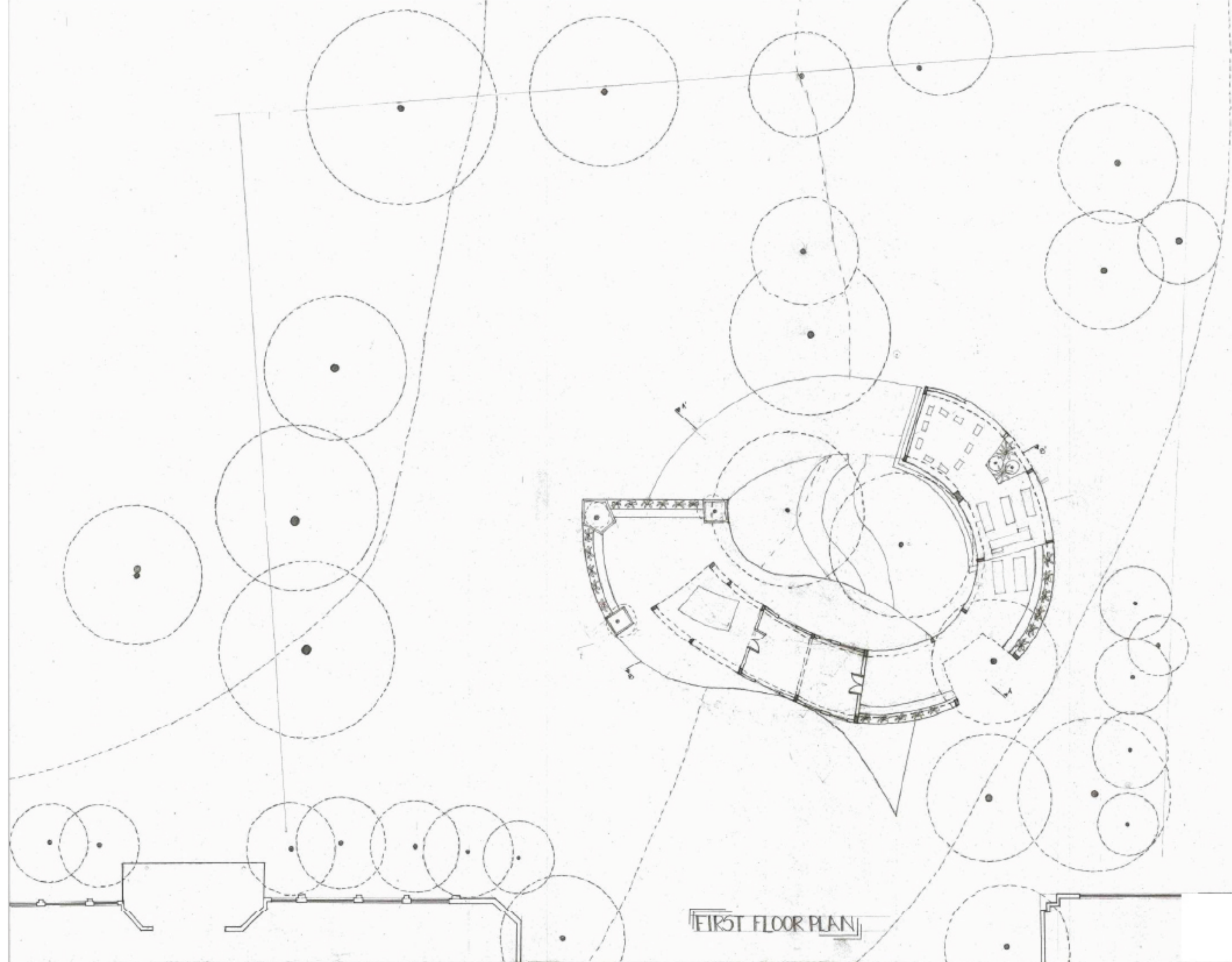
SITE SECTION  
SCALE: 1:200

SITE PLAN  
SCALE: 1:200



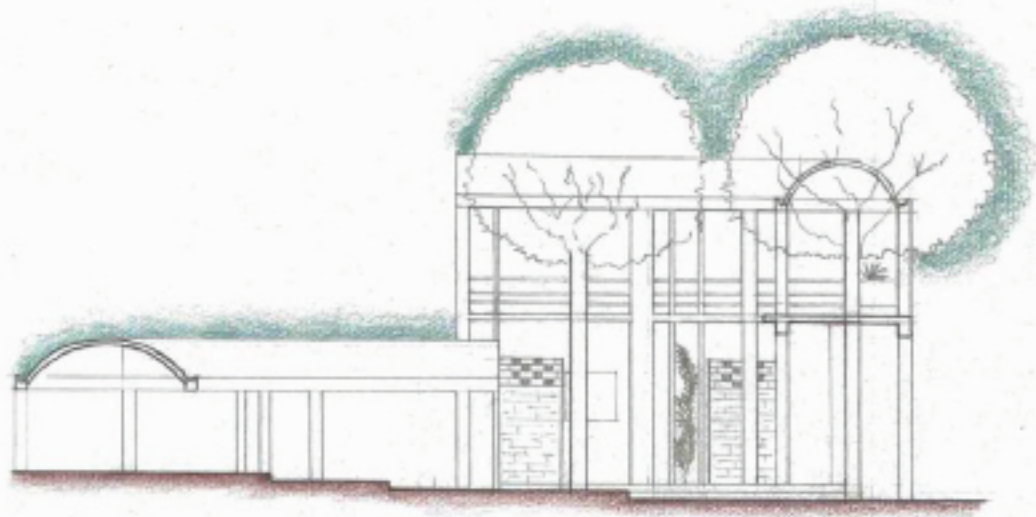
GROUND FLOOR PLAN

N  
SCALE: 1/4" = 1'-0"

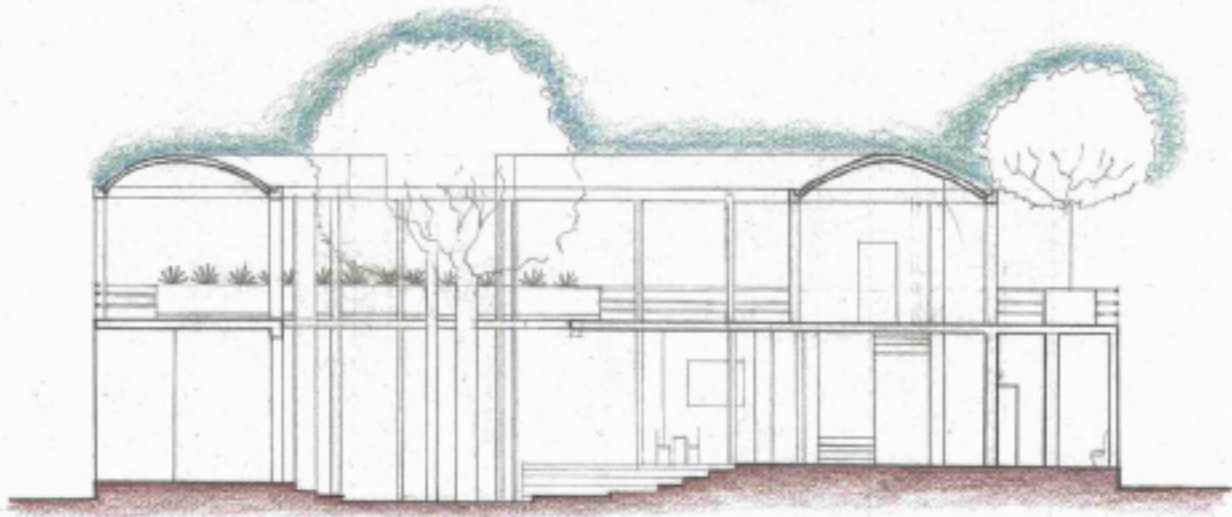


FIRST FLOOR PLAN

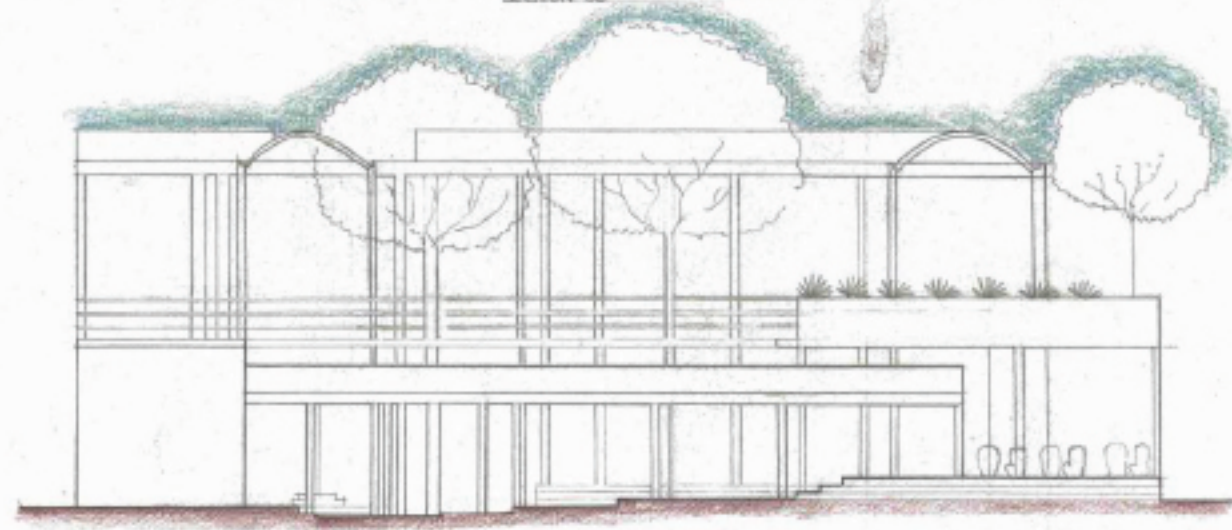
N  
↑  
SCALE - 1/8" = 1'-0"



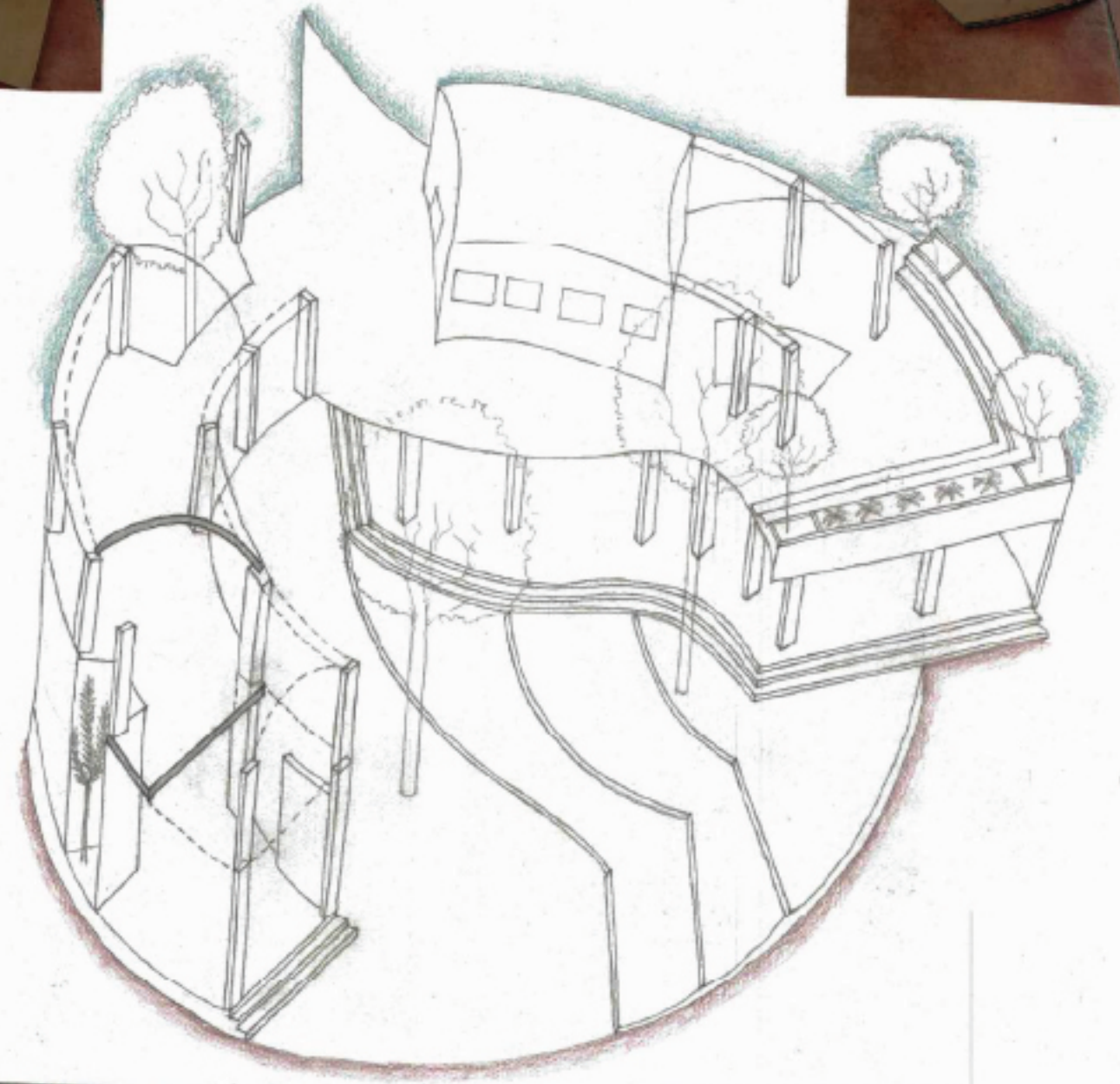
SECTION AA



SECTION BB



ELEVATION



3D VIEW

