

01

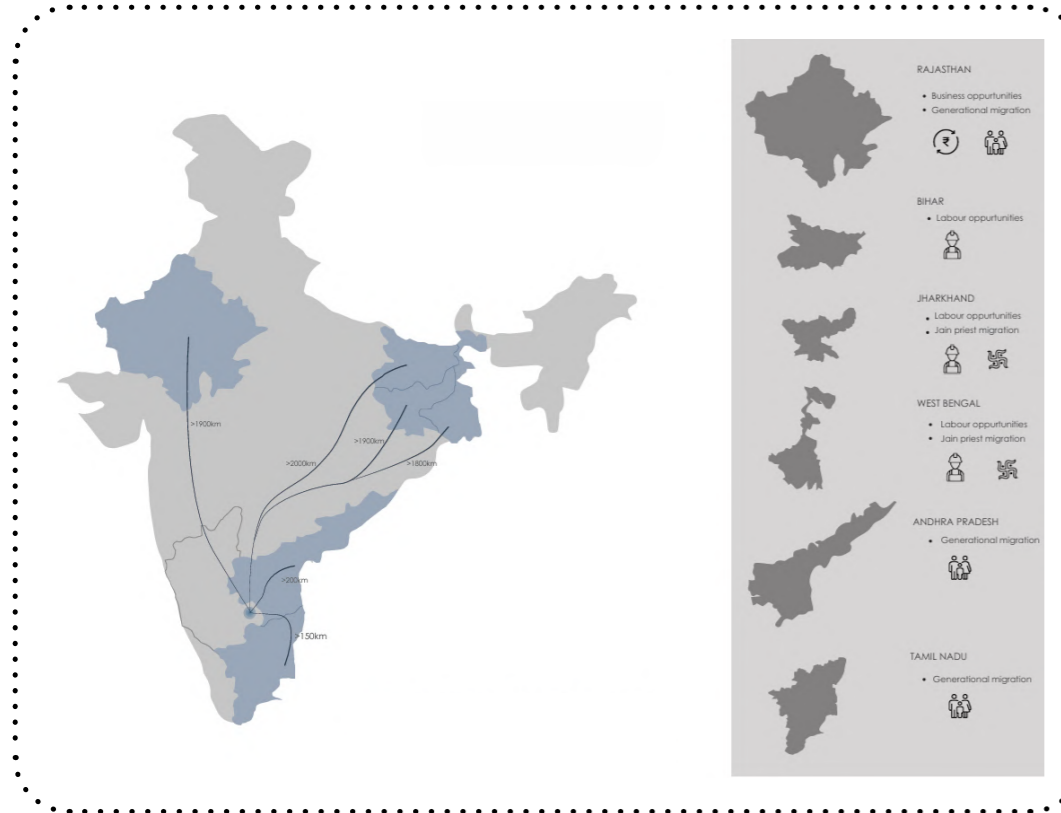
Multi - Modal Transit Hub

Urban Design
A Welfare Centre
Sem VIII, Academic work

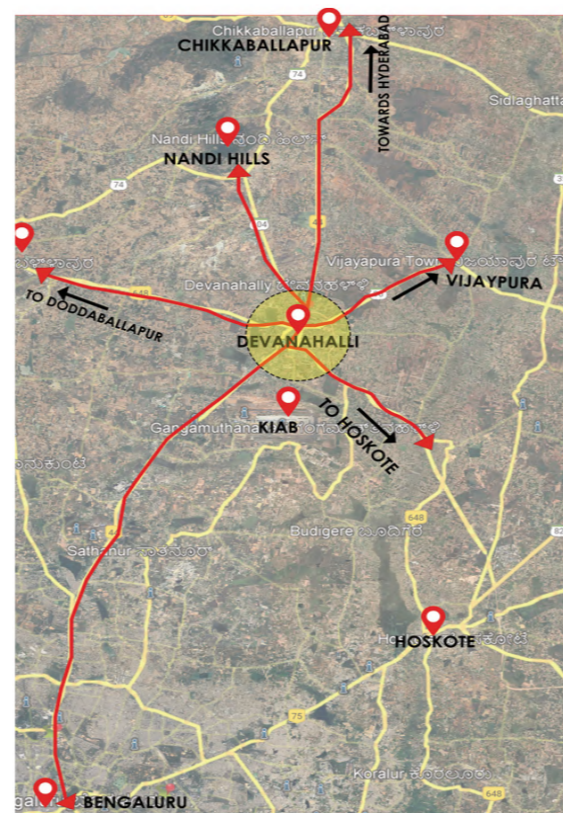
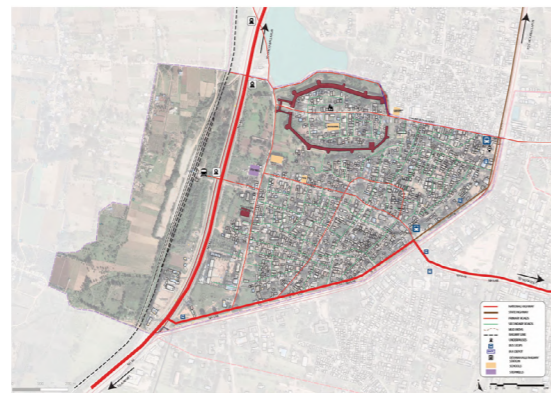
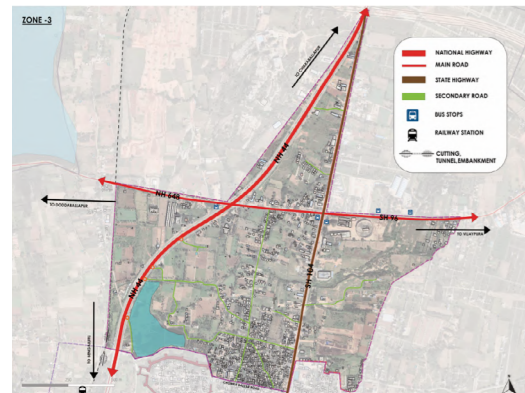
Site : Devanahalli, Karnata-
taka,
560062

Studio mentors : Ajinkya, Sachet,
Shalini, Ramya
BUILT UP AREA - 16,000 m2

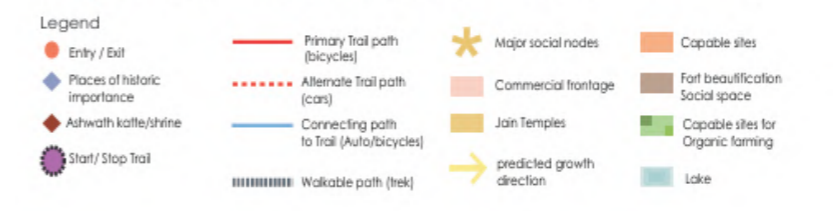
Site study



Settlement pattern



Regional Connectivity



Structural Map

Materials used

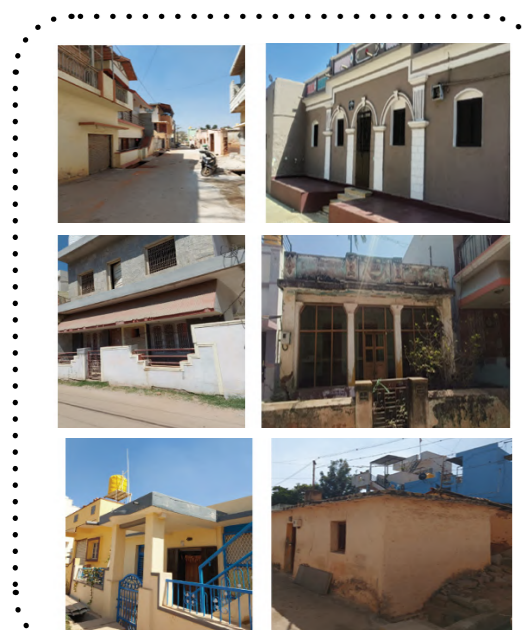


To preserve and develop ecological and social layer of devanahalli which acts as a model for other peri-urban settlements"

Clues from Devanahalli

- Shared spaces are shaded along with a micro climate.
- Shared spaces are mostly informal eg. steps front of shop or temple.
- Growth pattern in a linear way which is seen in chowka bazar.
- The construction materials used were bamboo and scabs.
- People use transformable spaces during exhibitions or any other events.
- The nodes are active due to either commercial or recreational activities.

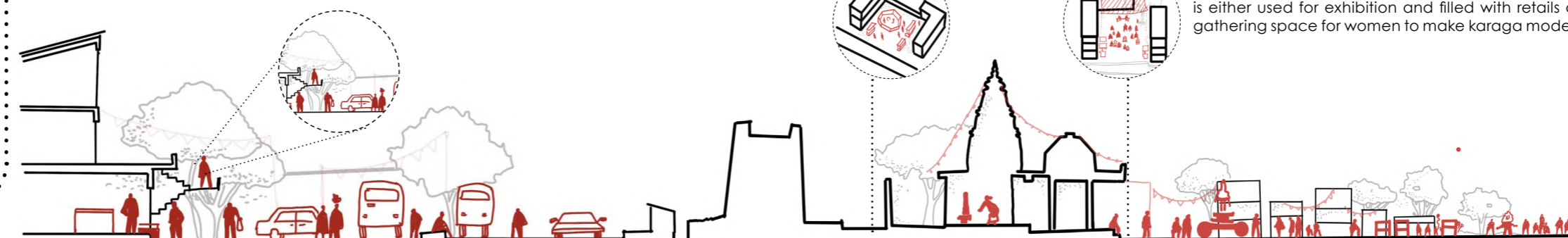
Town Connectivity



Built relationship



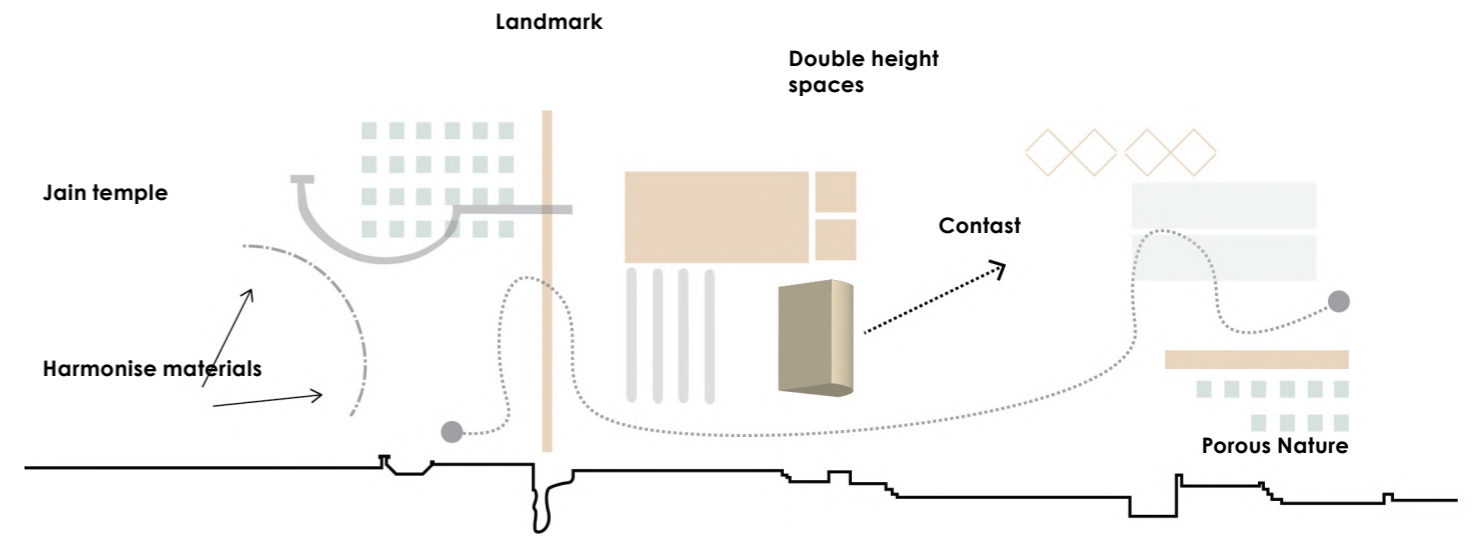
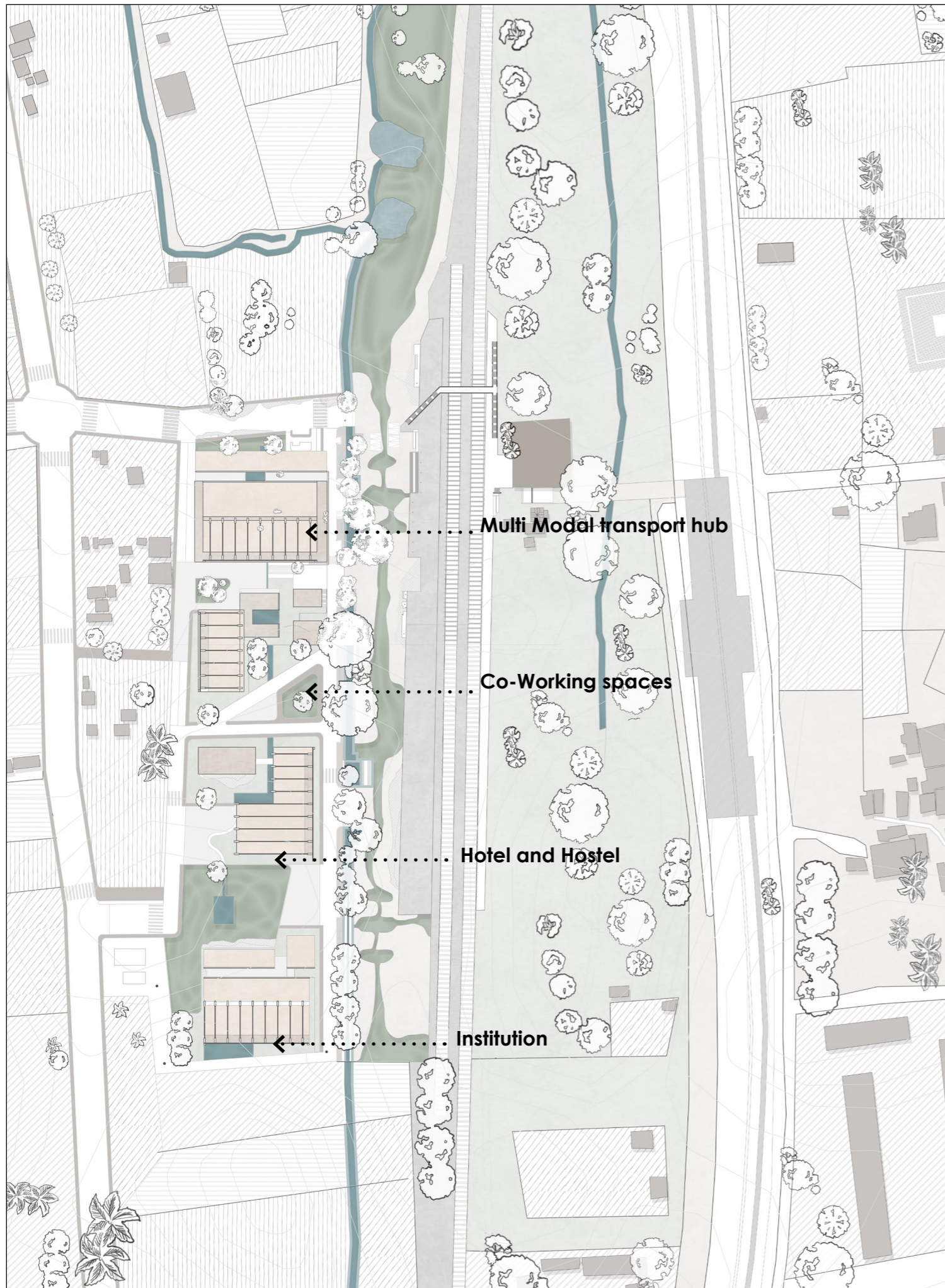
Bus stop being anchor
The bus stop is filled with the ribbons which shows the bus stop being a major part during the festivals.



Pockets of land
During festivals the pockets of land near the temple is either used for exhibition and filled with retails or gathering space for women to make karaga models



Scan for book

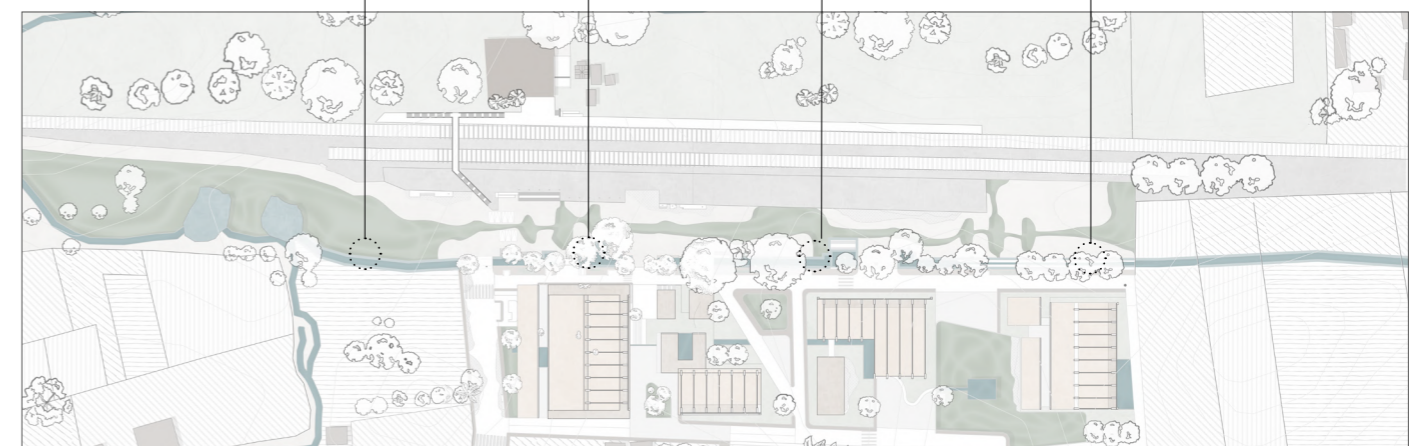
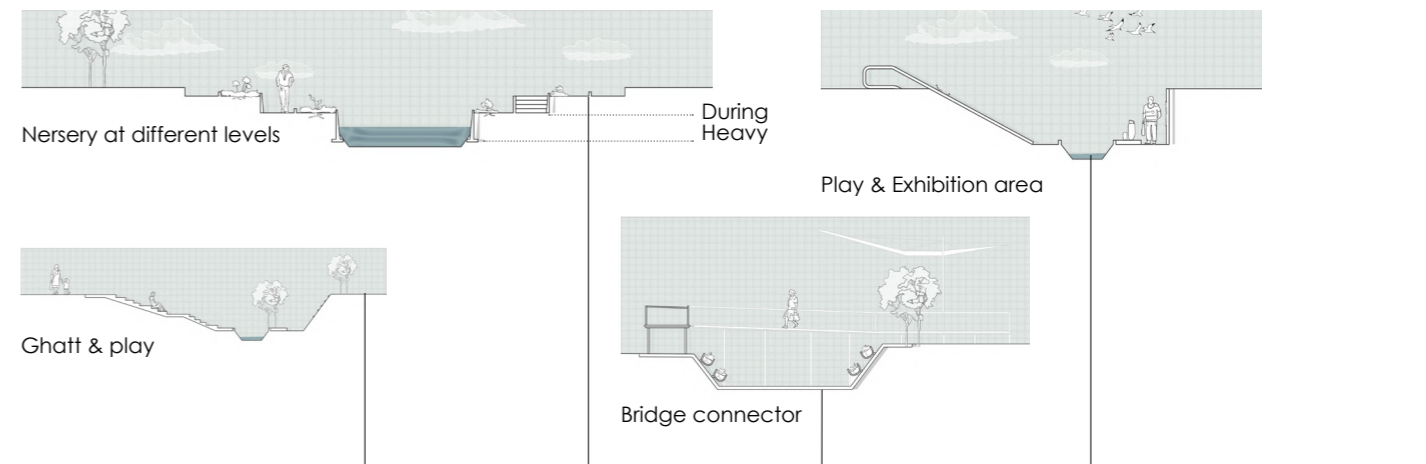


Conceptual section with strategies

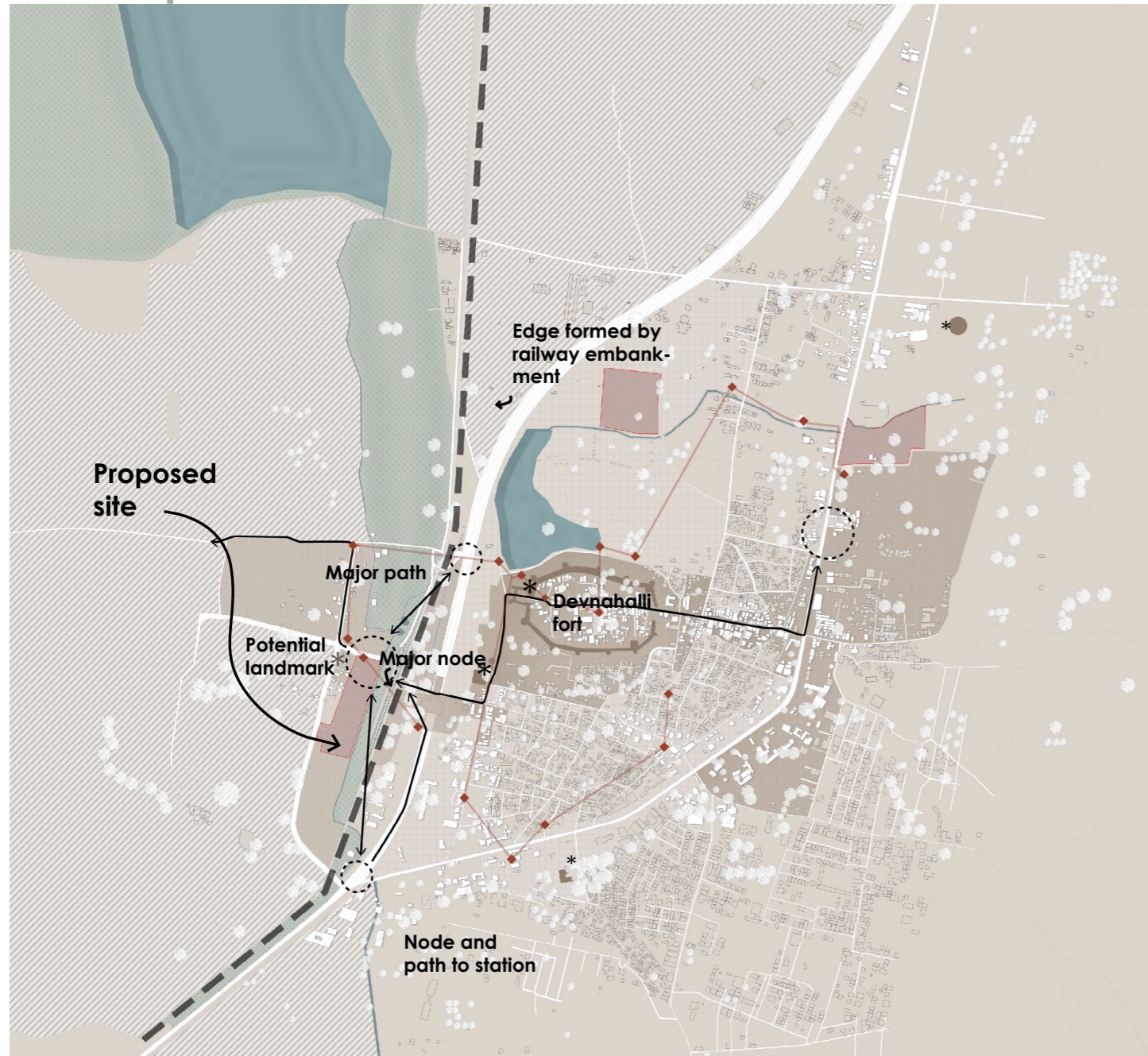
The abstrast section showing the strategies in terms of massing with respect in how to connect to neighbourhod



Street section



Concept



Landmark ✖

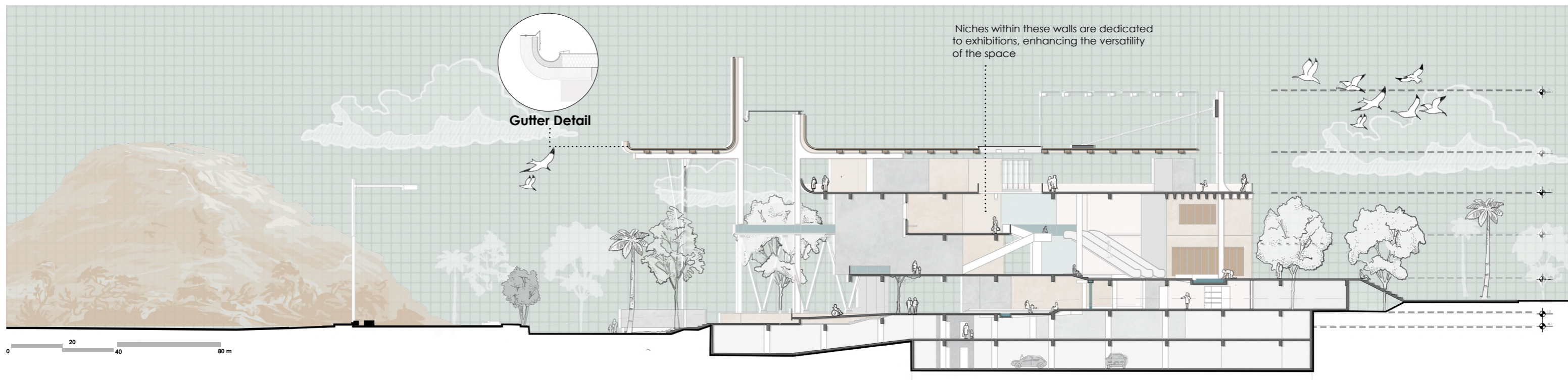
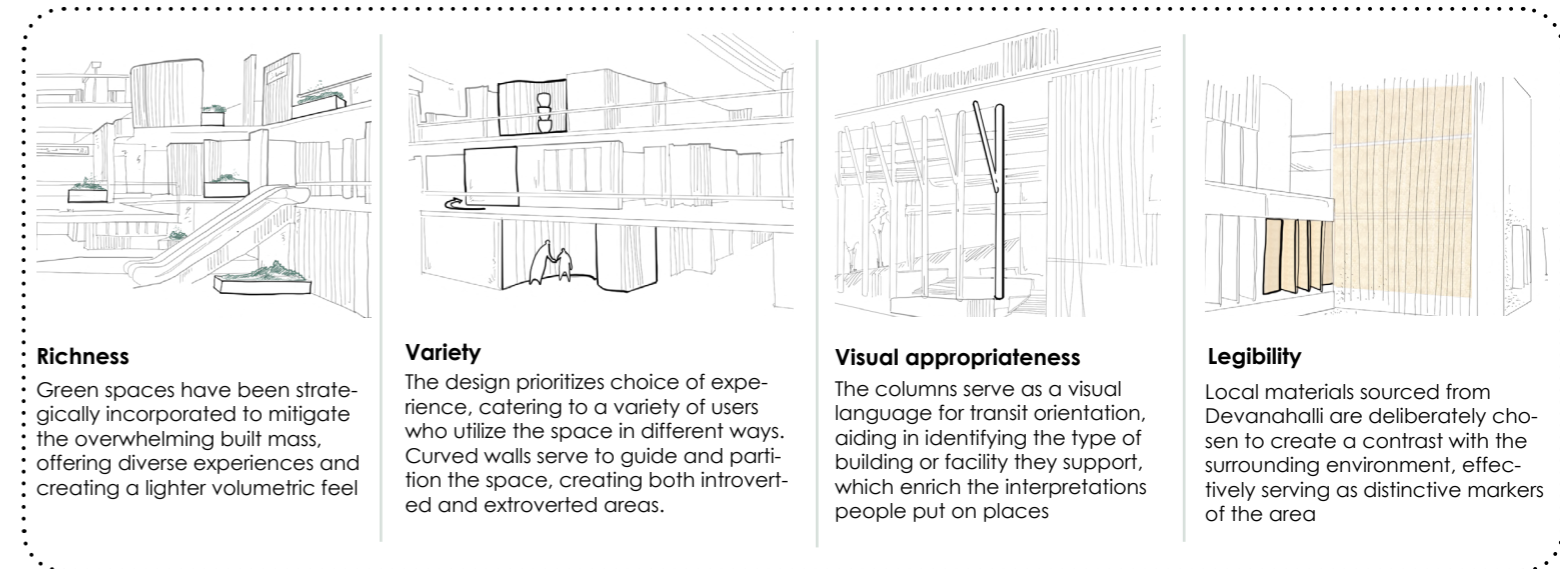
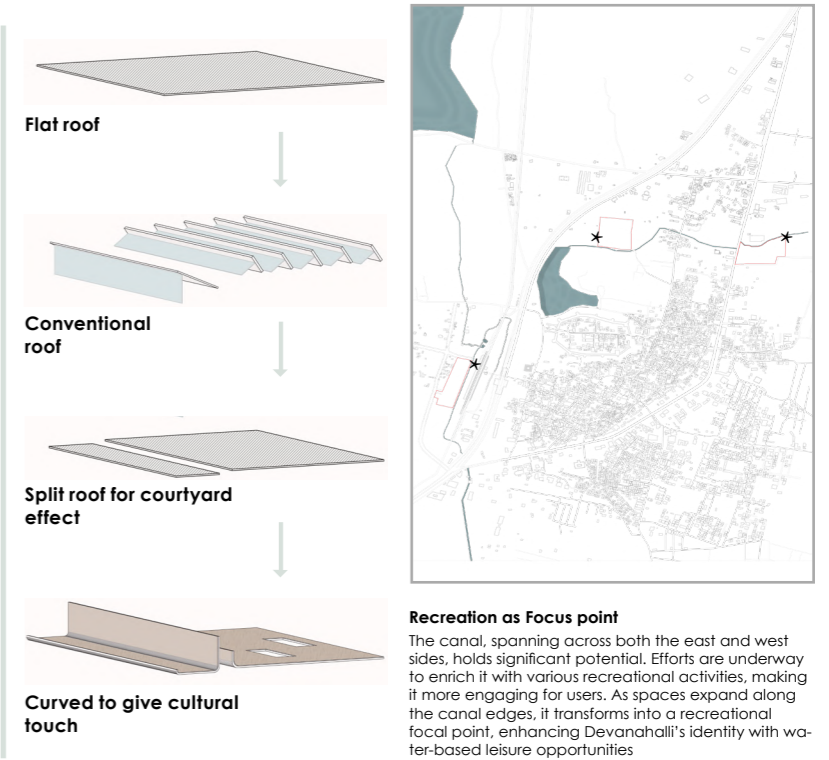
The western part of Devanahalli has gained a promising landmark, serving as a connection point to other peri-urban towns. This landmark not only links the west side with the east of Devanahalli but also fosters growth and development towards the west - the roof helps in creating the strong landmark by extruding it

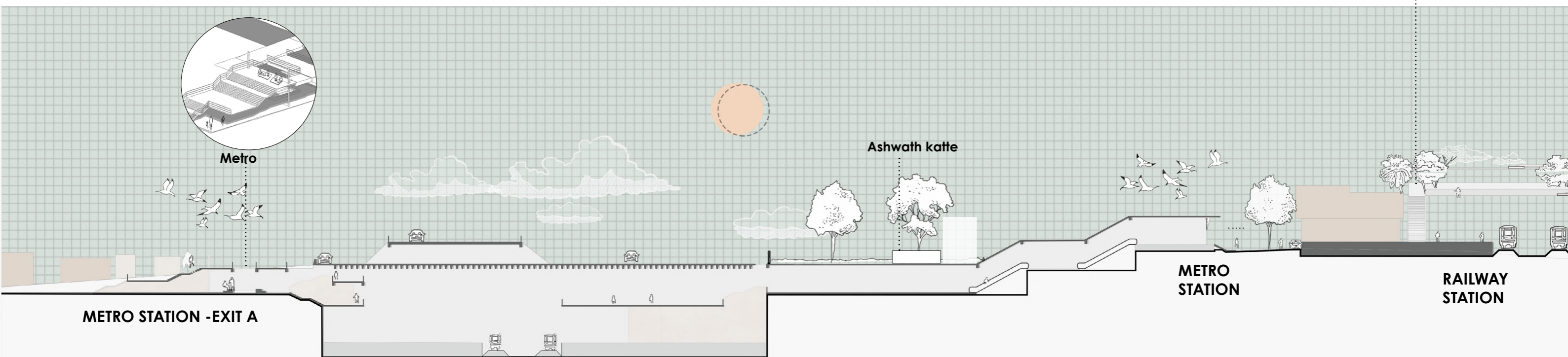
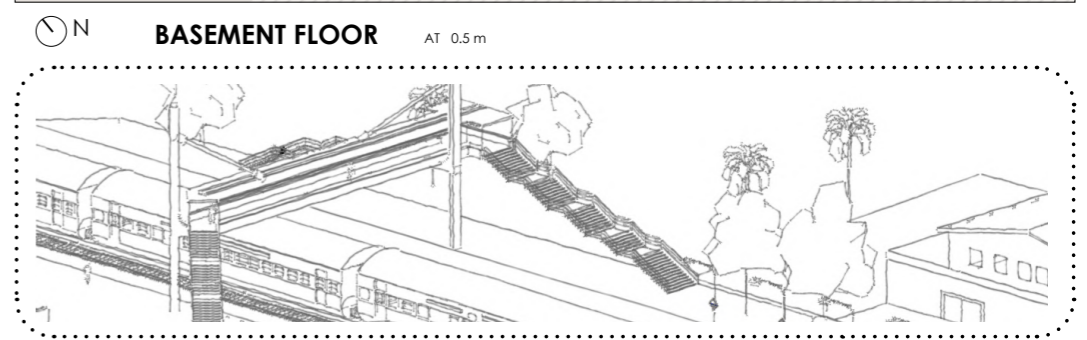
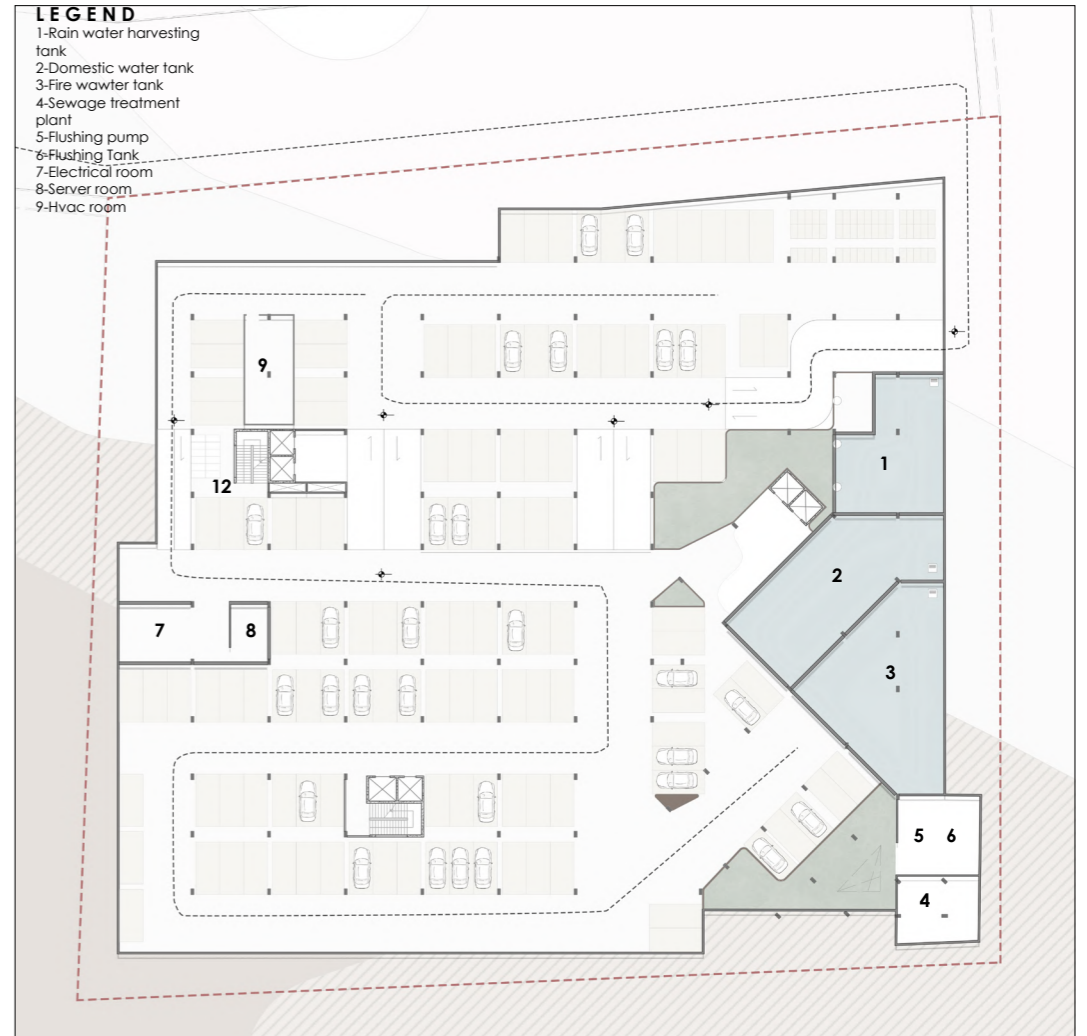
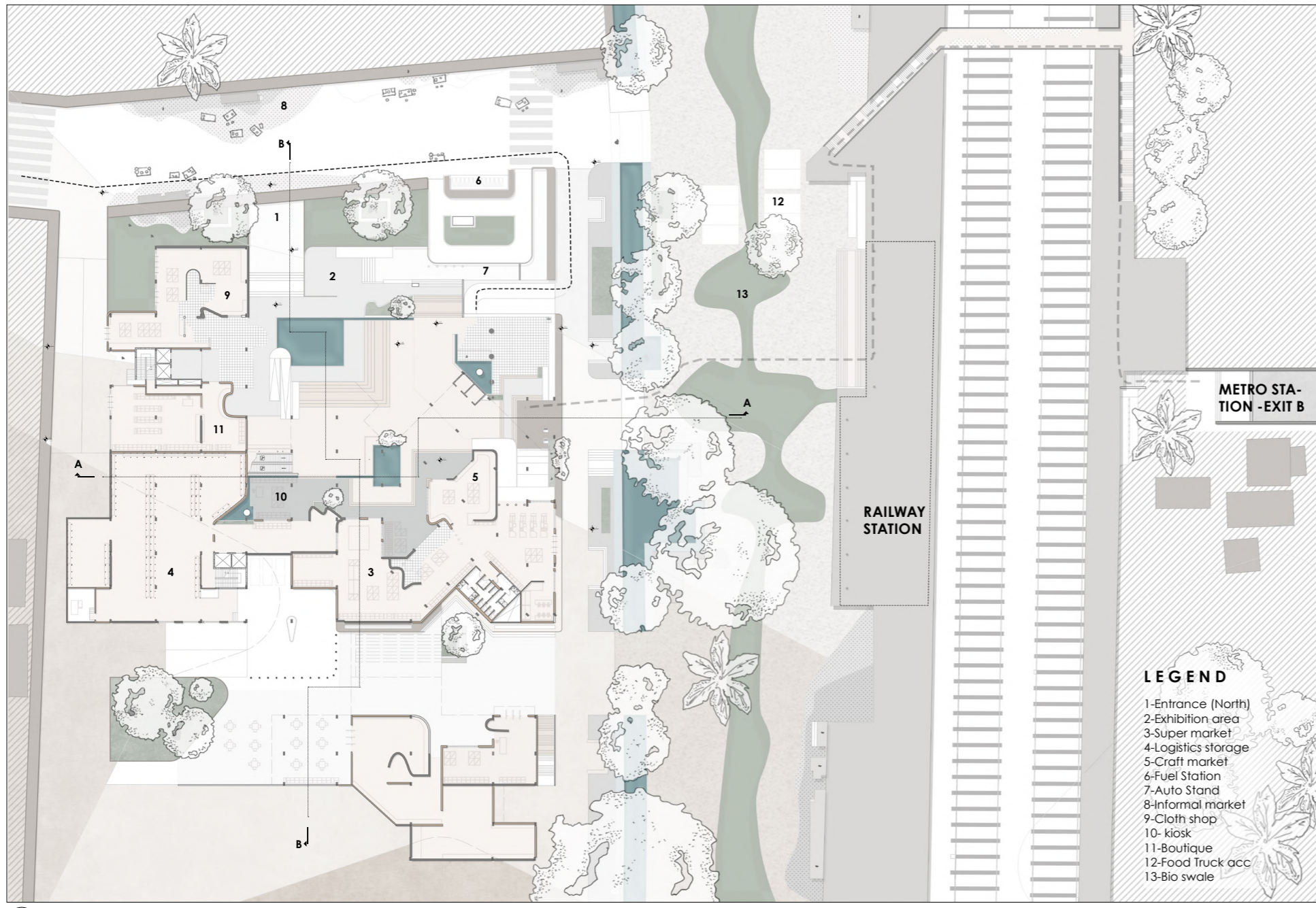
Robustness ◆

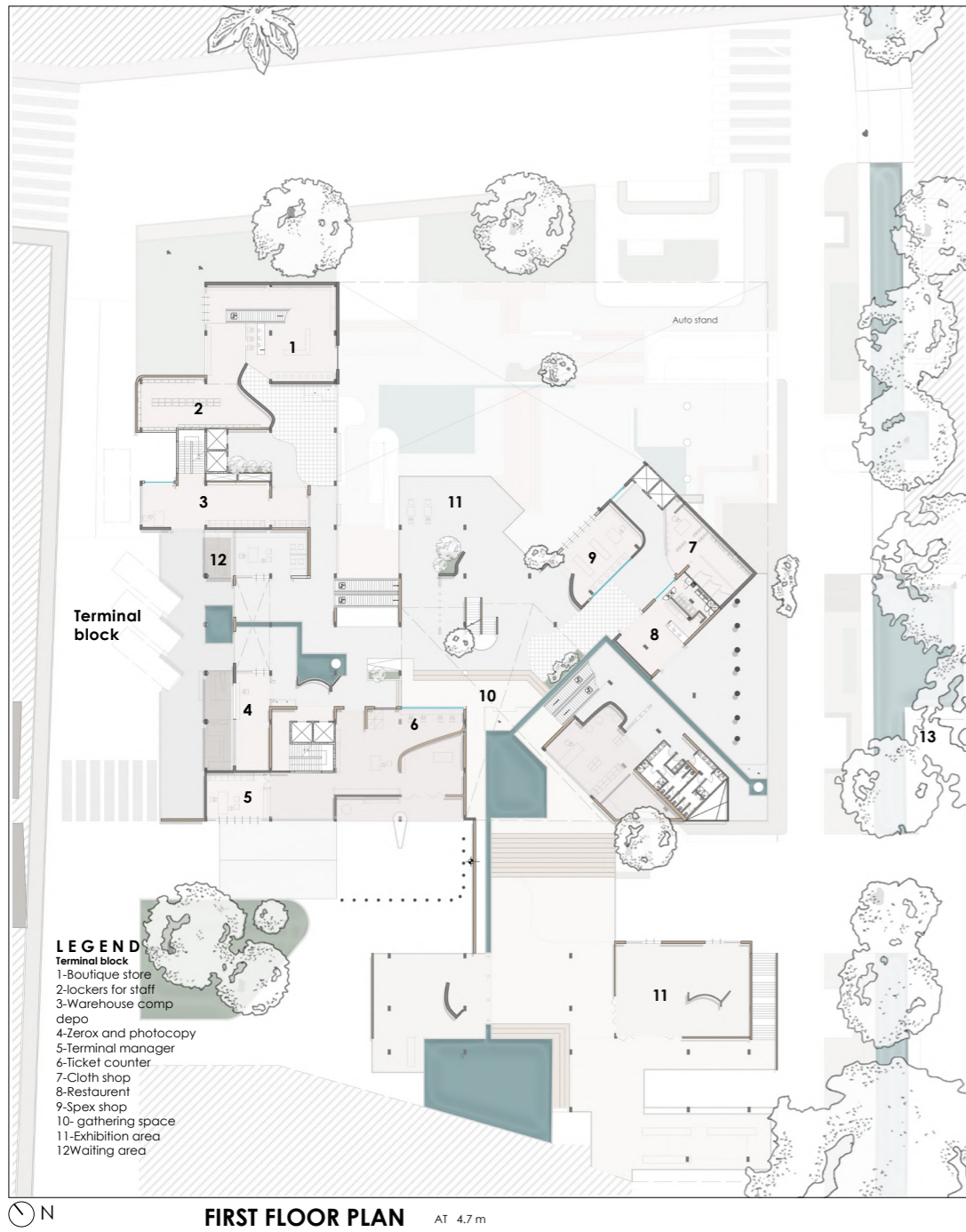
The social fabric of Devanahalli's west side is seamlessly linked to the east through minor social spaces like Ashward Kathes. These spaces are being enhanced to be more user-friendly, fostering harmony and cohesion in terms of social interaction and engagement.

Permiability ➤

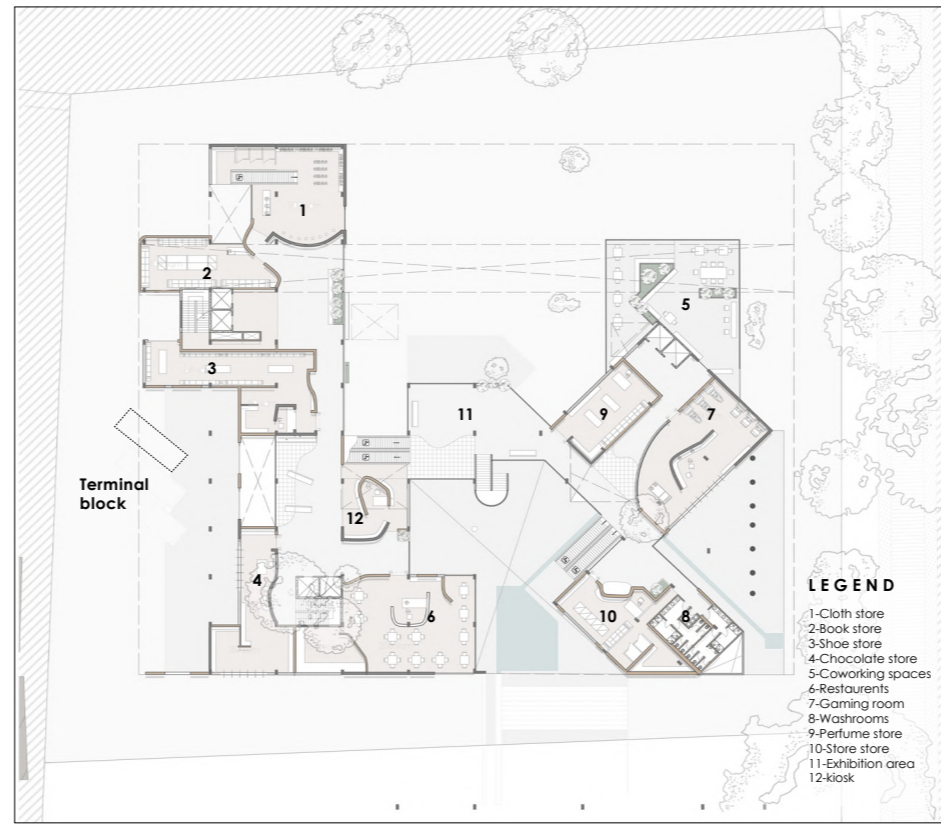
Primary access points facilitate the connection between the east and west sides of Devanahalli via the metro, opening up to both areas. This enhances the overall experience of accessing the site by integrating social and cultural elements, harmonizing the transit experience with the local community vibe.



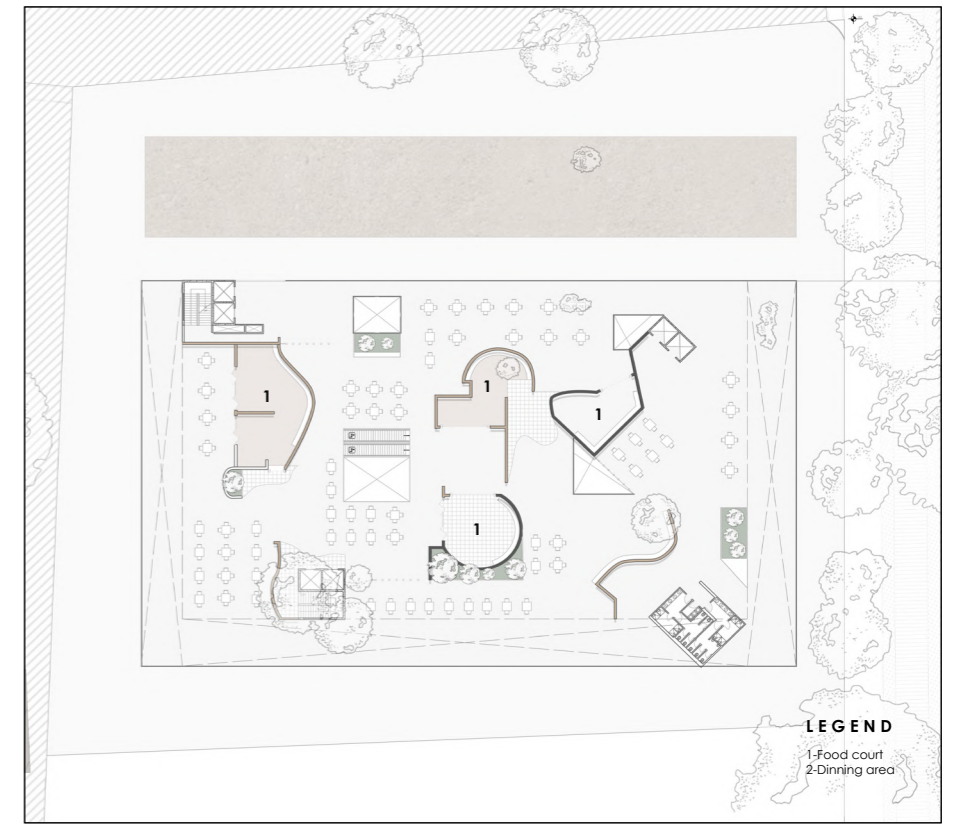




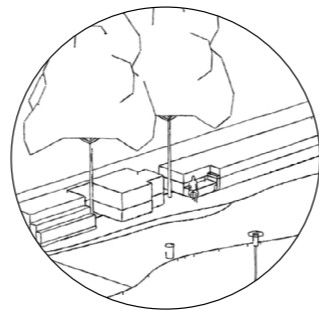
FIRST FLOOR PLAN AT 4.7 m



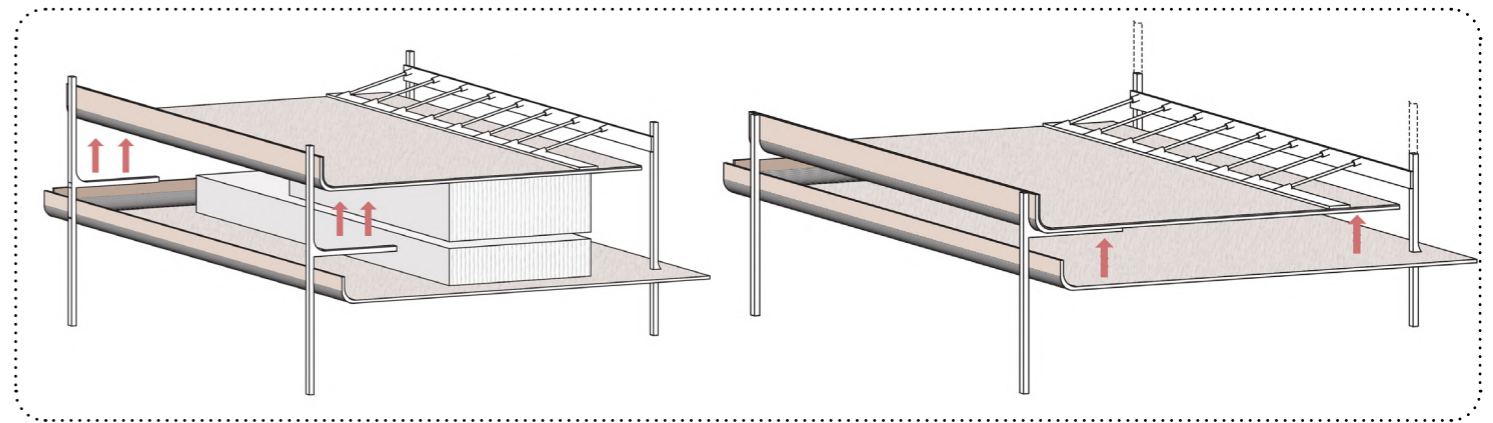
SECOND FLOOR AT 8.2 m



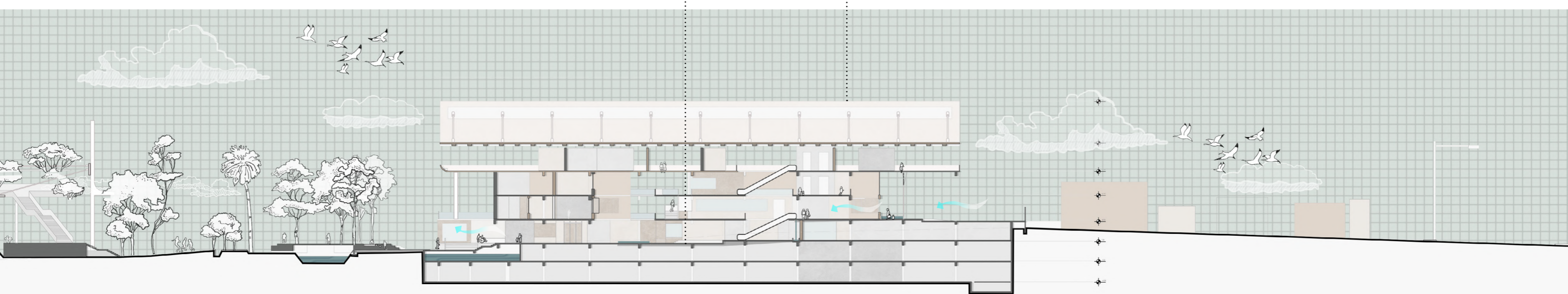
THIRD FLOOR AT 12.7



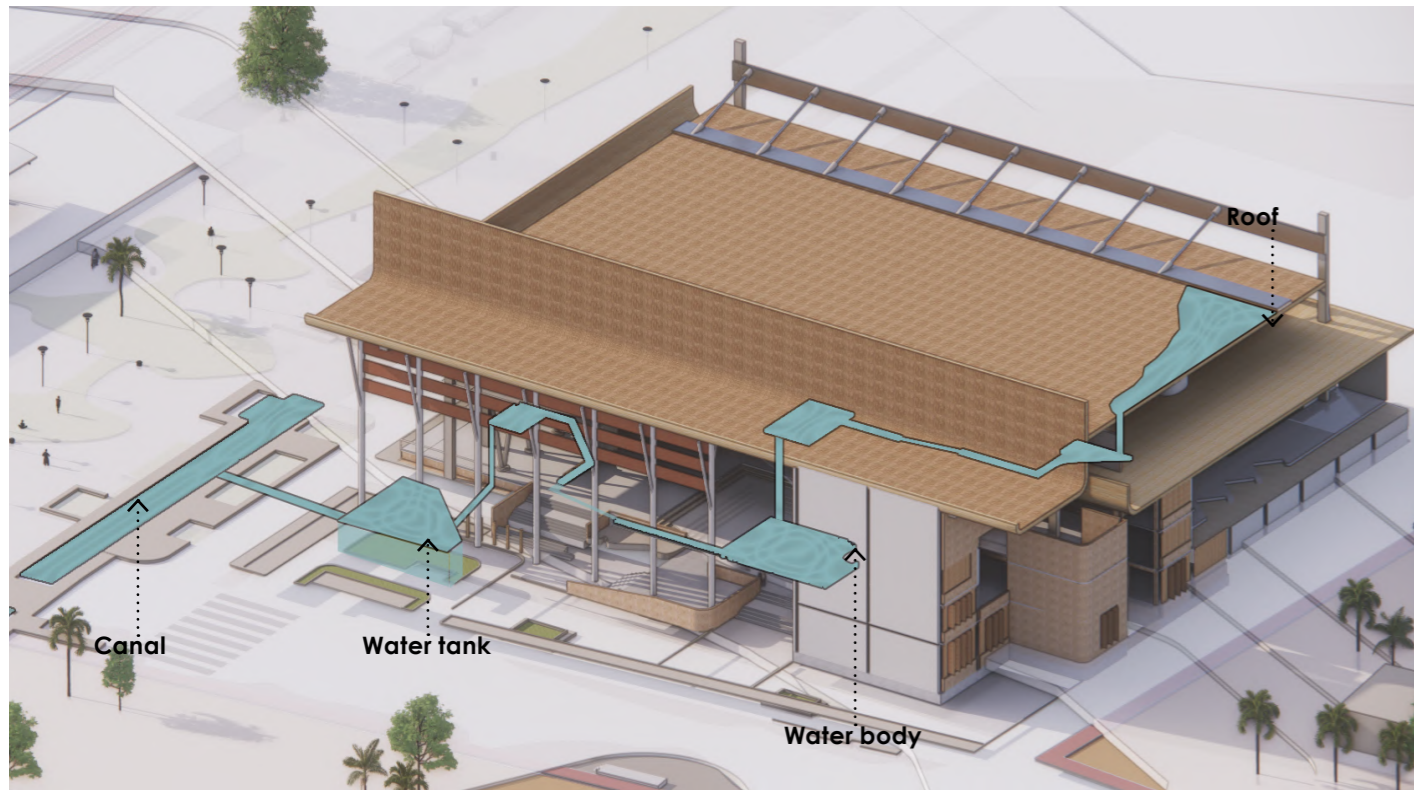
Ashwath katte



Modular roof expansion - The roof will be lifted through tensile to accomodate more room space or double height space

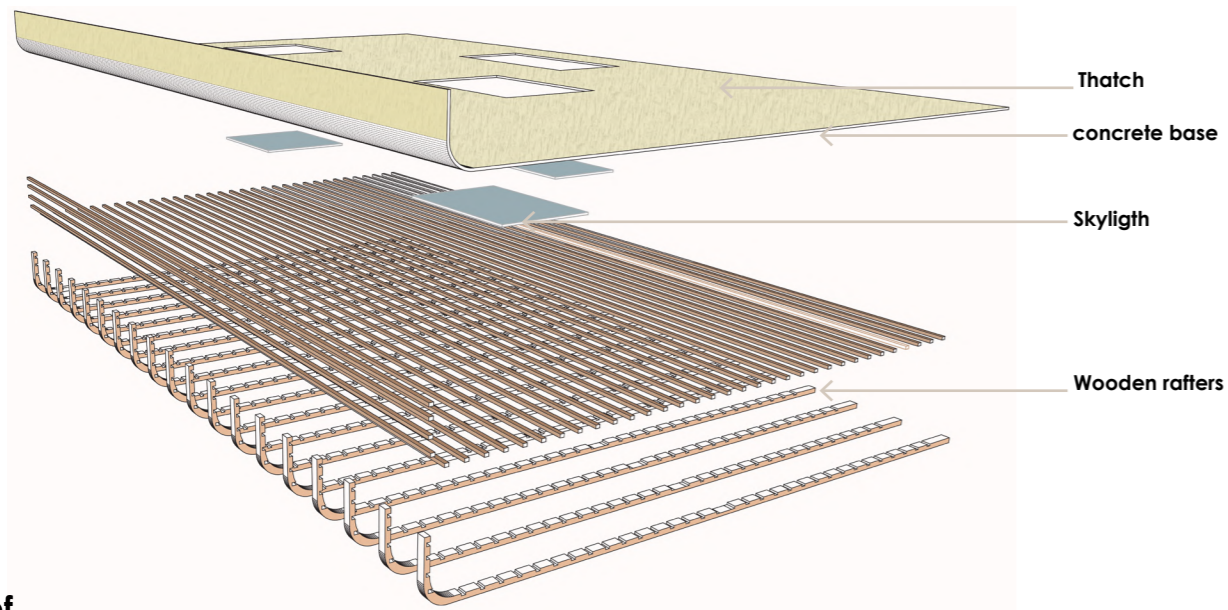


SECTION AT AA

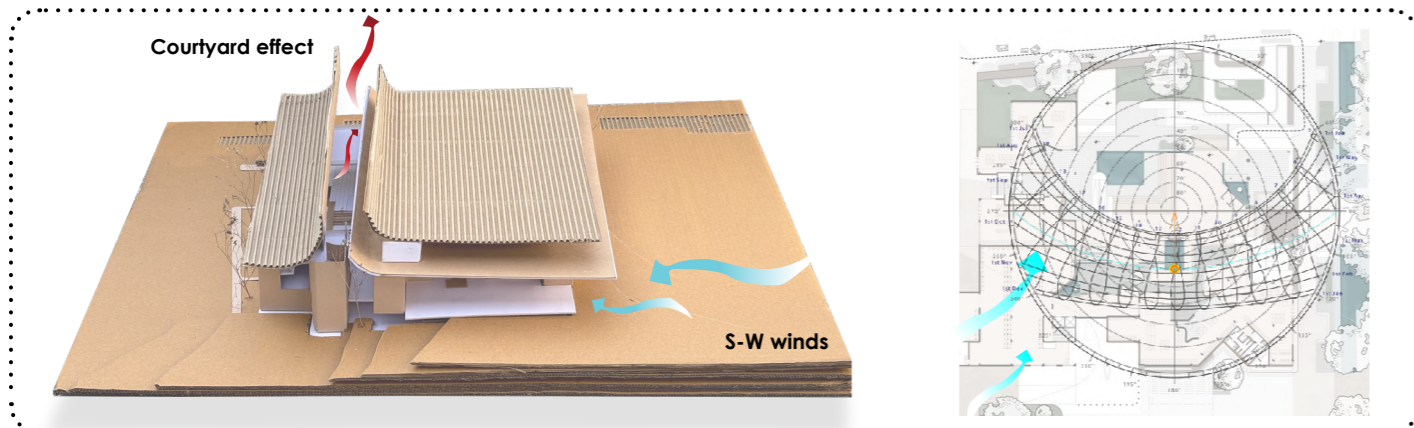


Journey of water

The canal, spanning across both the east and west sides, holds significant potential. Efforts are underway to enrich it with various recreational activities, making it more engaging for users. As spaces expand along the canal edges, it transforms into a recreational focal point, enhancing Devanahalli's identity with water-based leisure opportunities



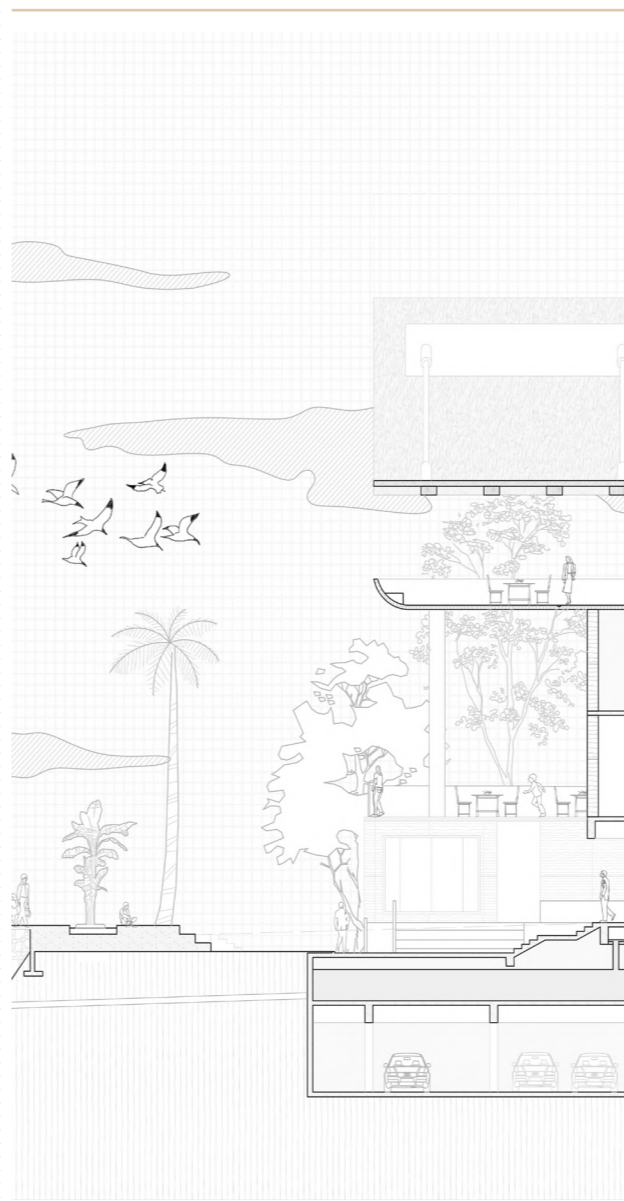
Roof



Climate



People and their association with trees



Part Section



Bridge view



Landscape next to building

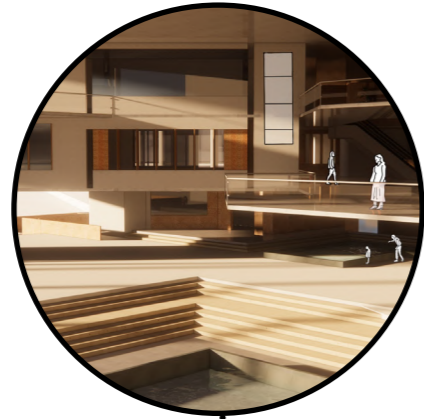


Towards Railway





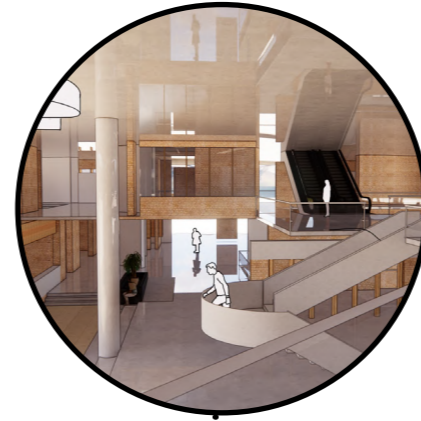
Terminal block



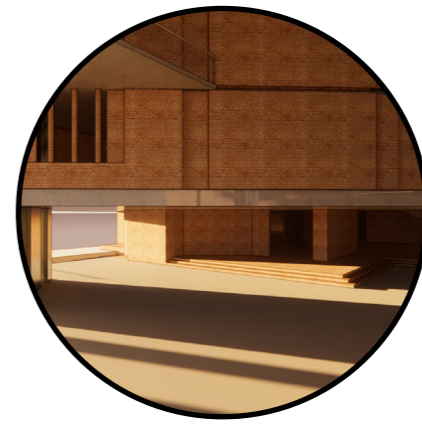
Atrium space



Gathering space



Corridor from 2nd floor



Entrance plaza



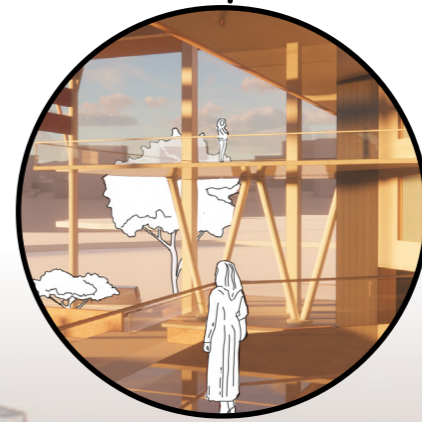
Co-working spaces



East entrance



Corridor from 1st



Atrium from 1st floor

