

# QUDRAT :

Crafting Aangans within the wilderness

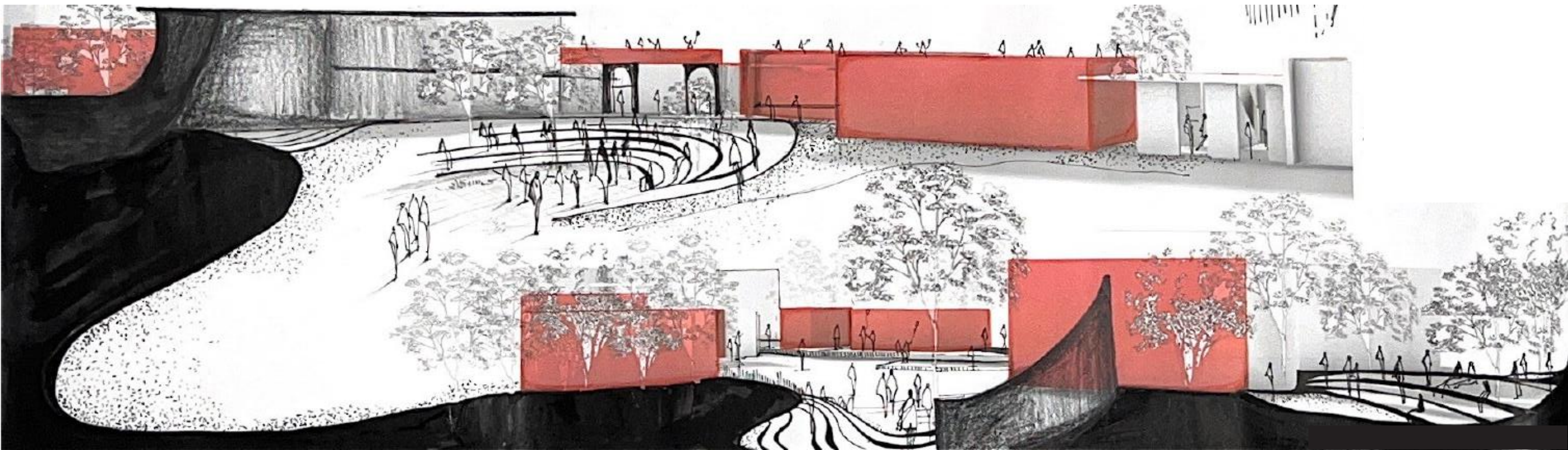
WOMEN SKILL DEVELOPMENT CENTRE

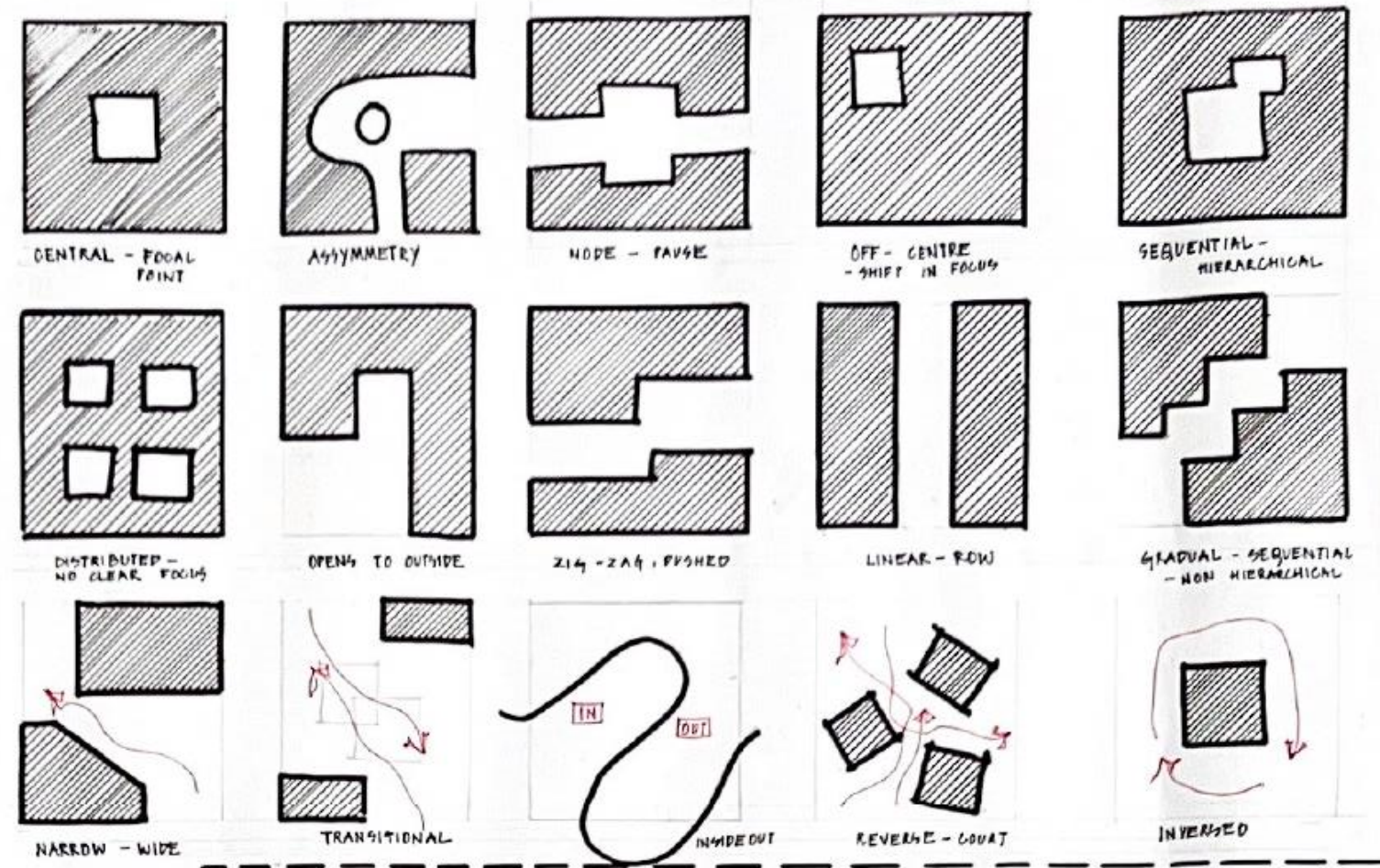
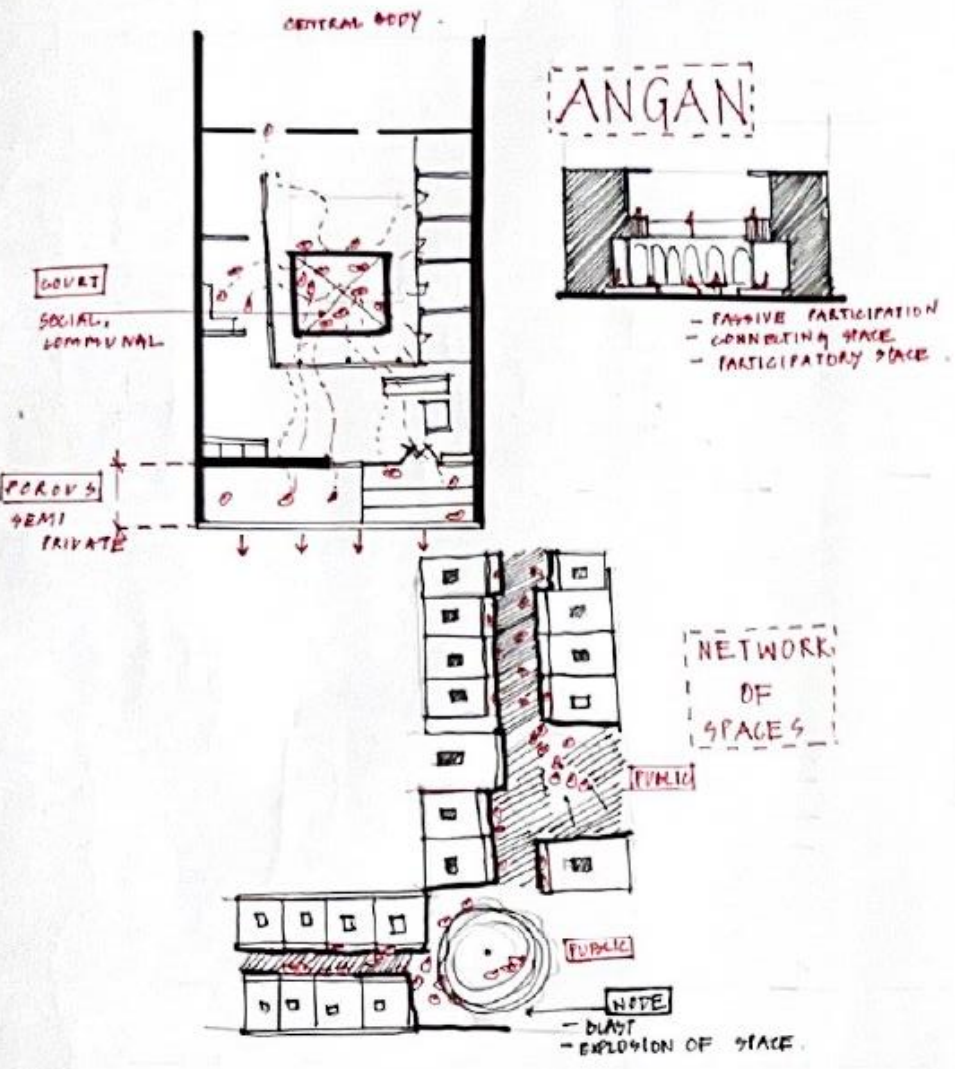
---

**Site :** Bangalore University

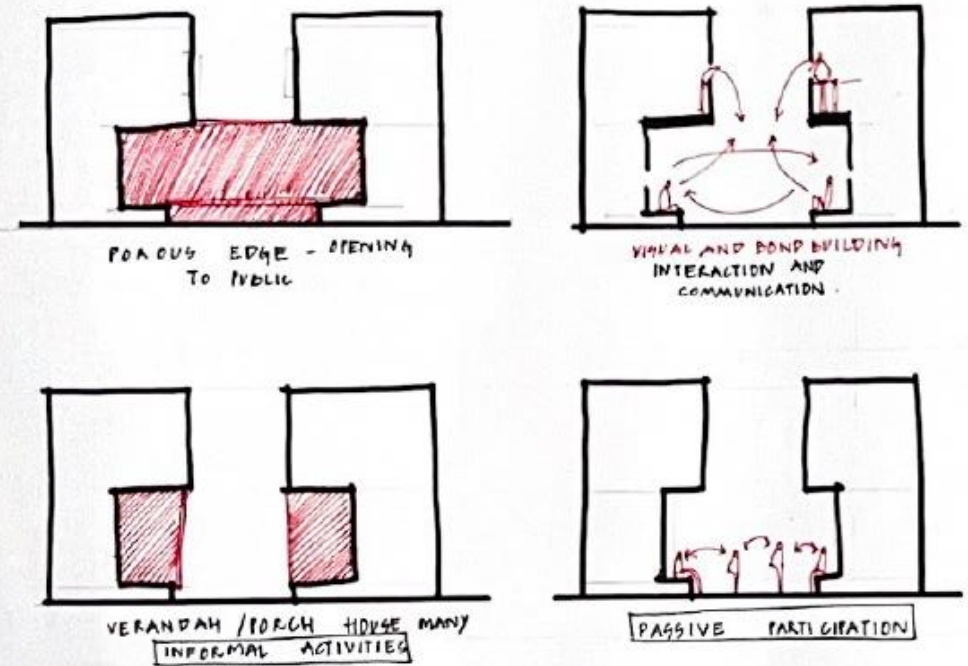
**Built Up :** 4500 sqm

The site is a subtle weave between landscape and institutional architecture . Drawing upon the spatial character of Aangans – a socio-cultural space and appropriating and redefining in the given program and context – the campus is conceived as a space for empowerment , growth and interaction between all communities . The campus almost acts as a non building ,nestled within the natural landscape creates a dialogue between the opposing forces of geometry , material , texture and society . The Aangans seamlessly became an external body of space , where women could sit , learn , laugh and learn and numerous breakout spaces which cater to the student community within the larger campus





# COURTYARD - A SOCIAL SPACE

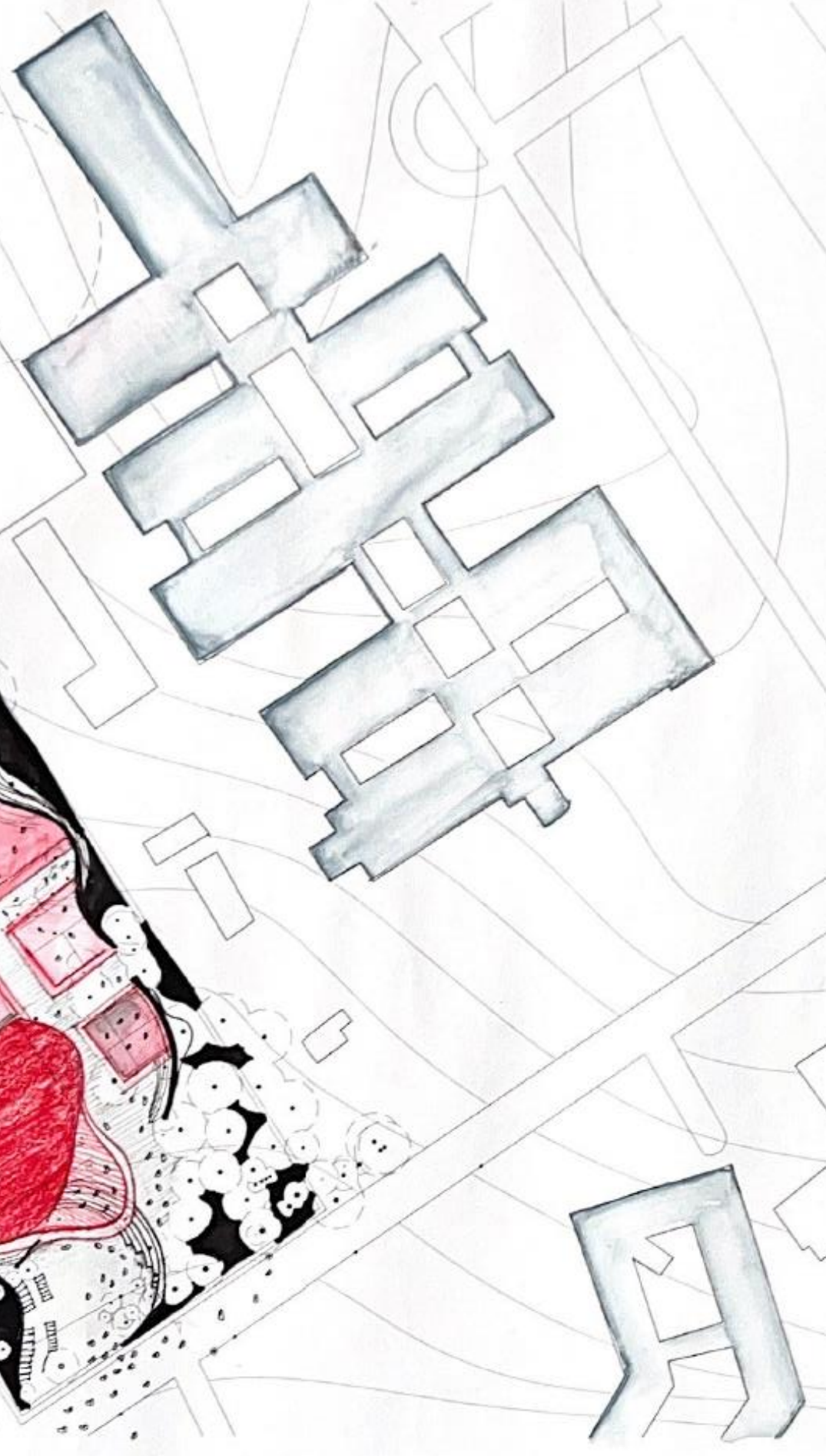
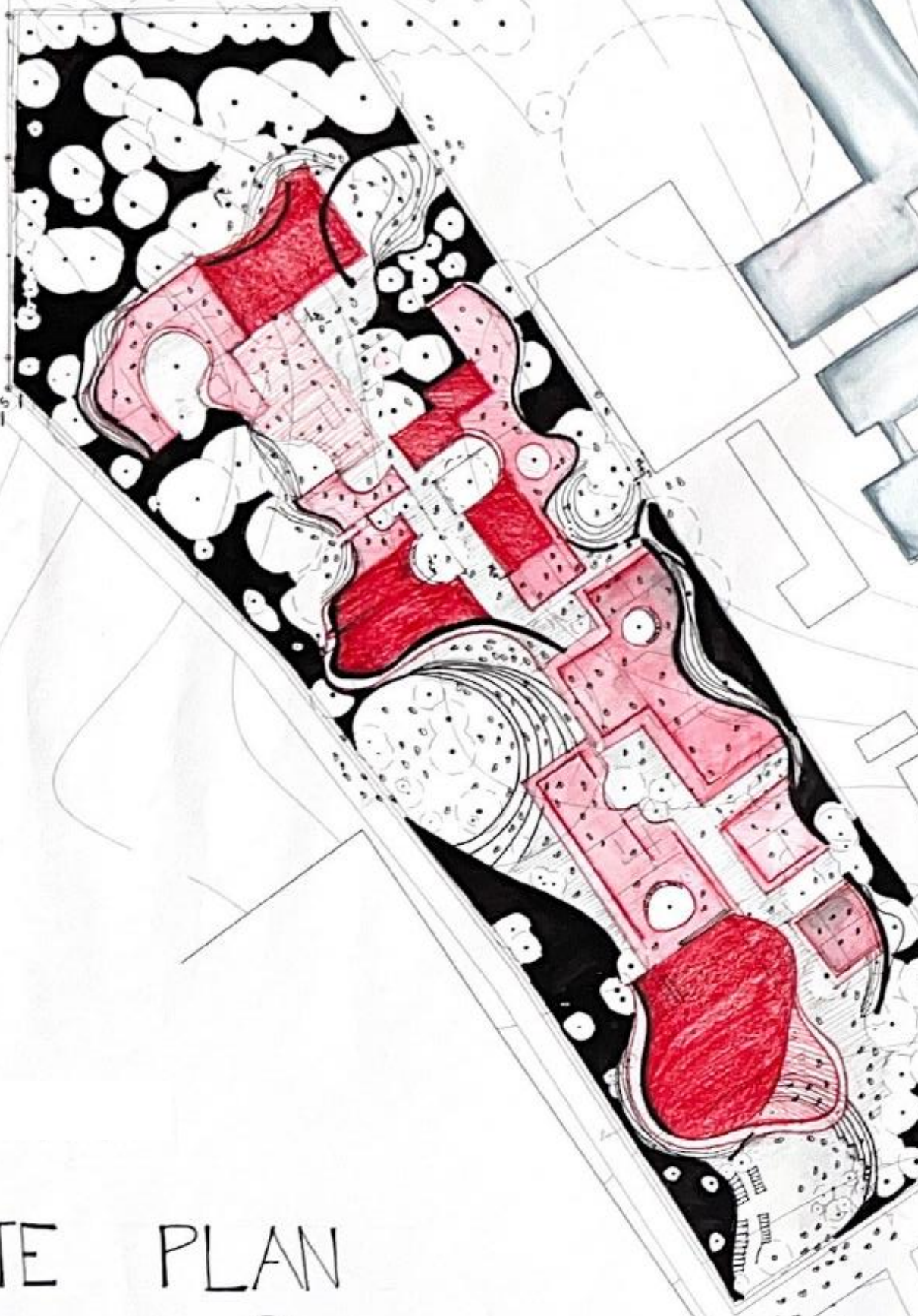


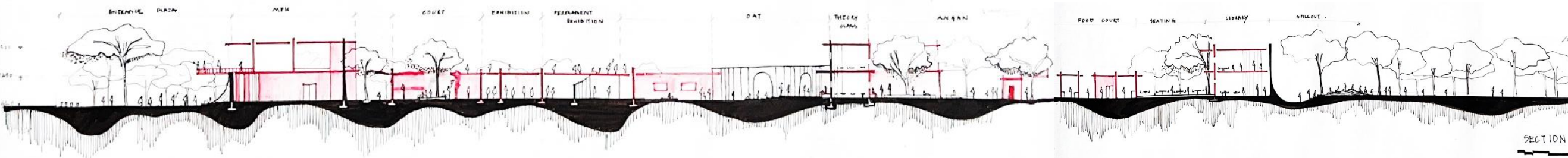
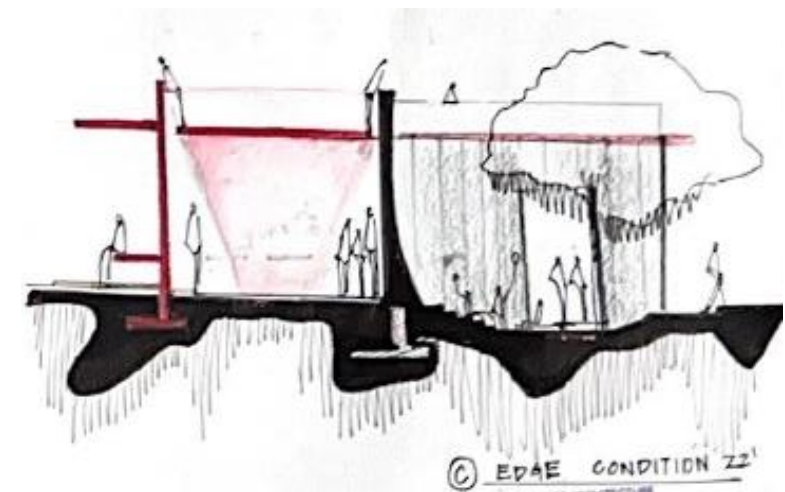
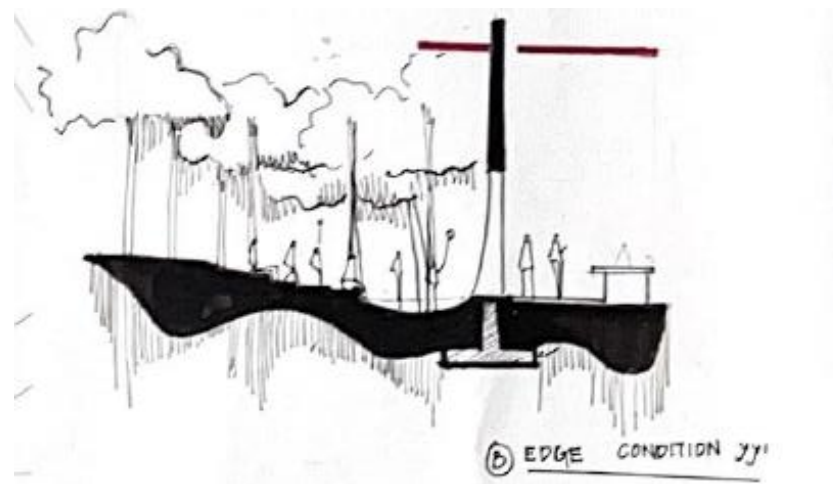
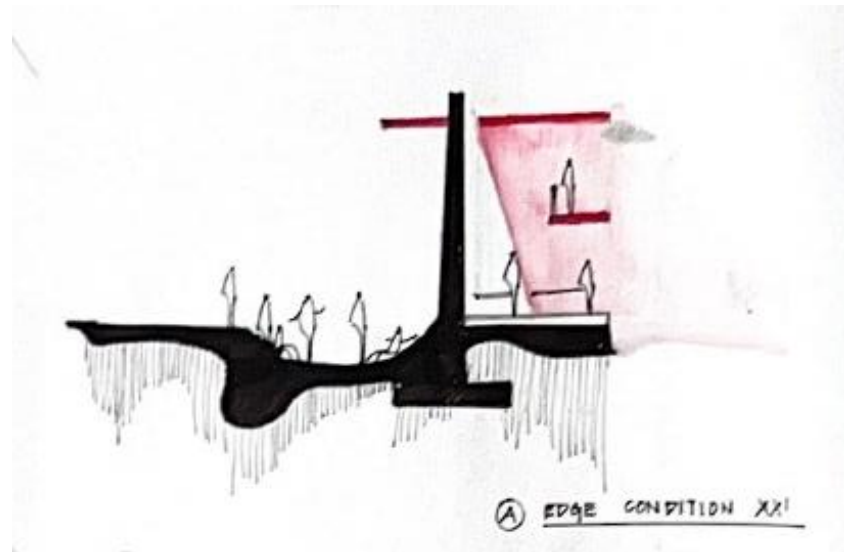
**HIERARCHY OF ANGANS**

- OFF CENTRIC
- BLIND EDGE
- REVERSE THE COURT
- OPENS TO PUBLIC

# SITE PLAN

SCALE 

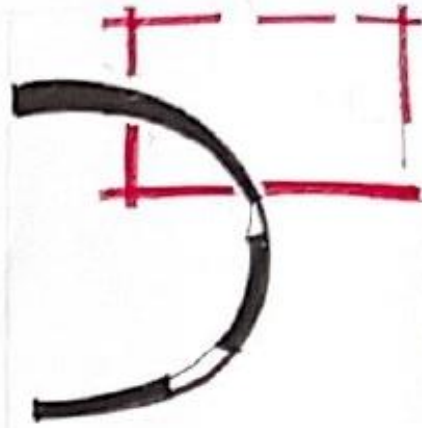




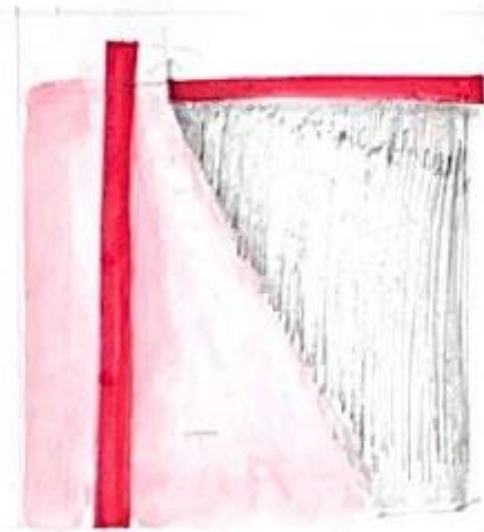
SECTION D1



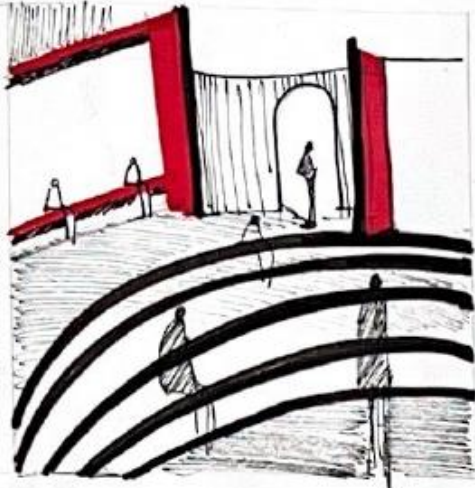
MARKING NODES - SENSE OF ARRIVAL - MEMORY



OPPOSING FORCES -



EXPLOSION - FLUSHED LIGHT



CENTRAL BODY - EMPHASIS ON COMMUNITY INTERACTION



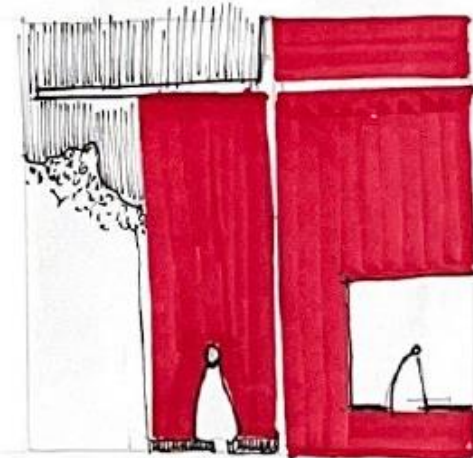
INFORMAL SPILLOUT - PASSIVE



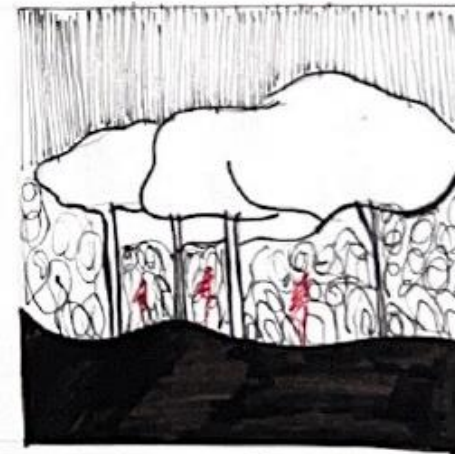
BUILT OPENING TO UNBUILT



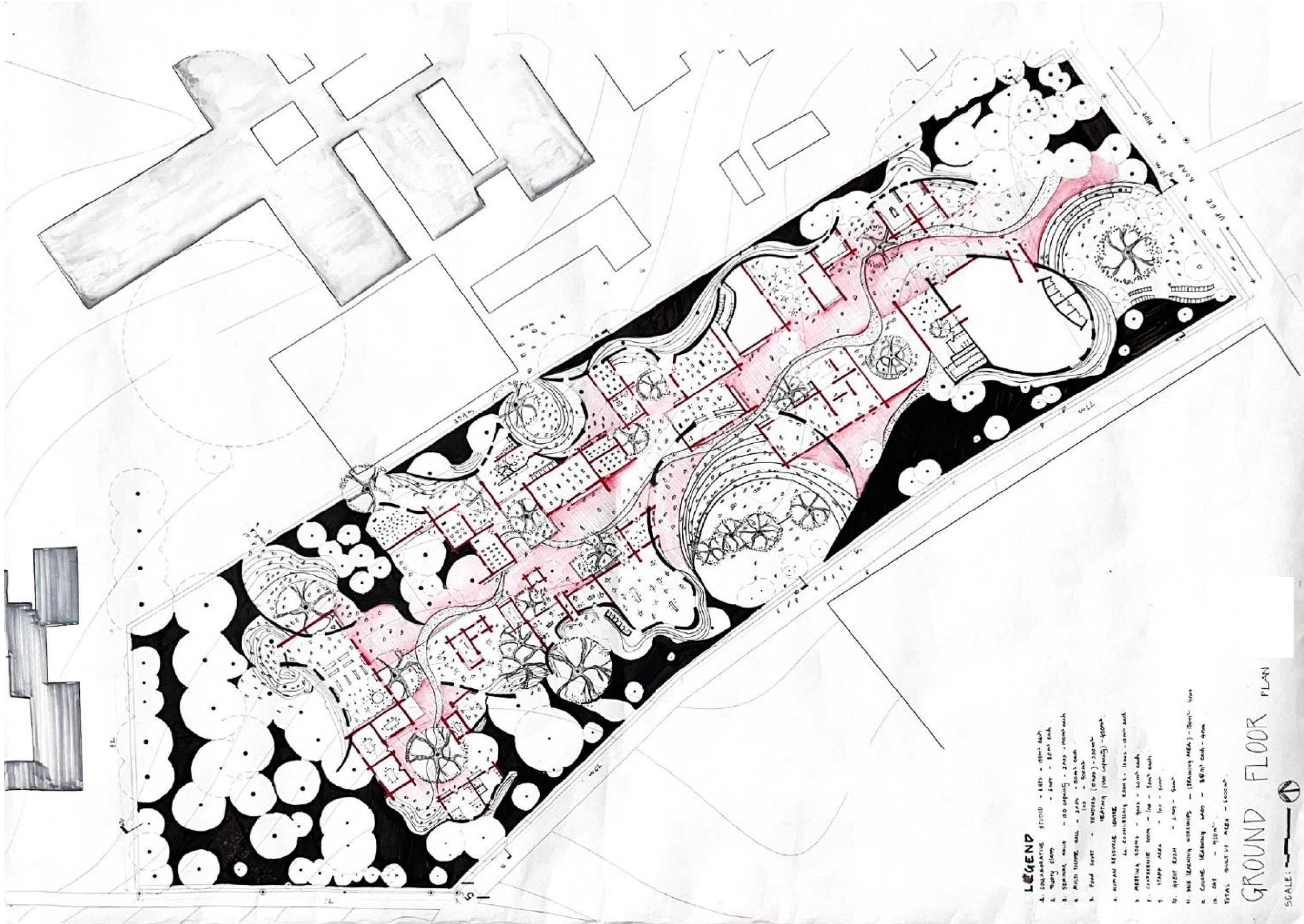
VISUAL CONNECTION



INTERSECTION OF PLANES



WILDERNESS

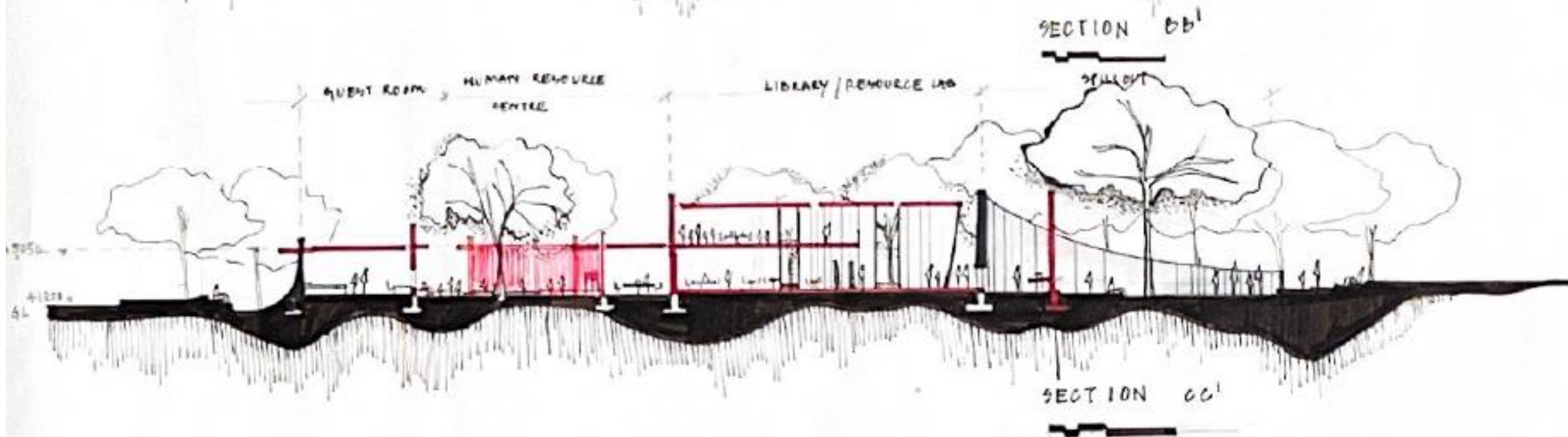
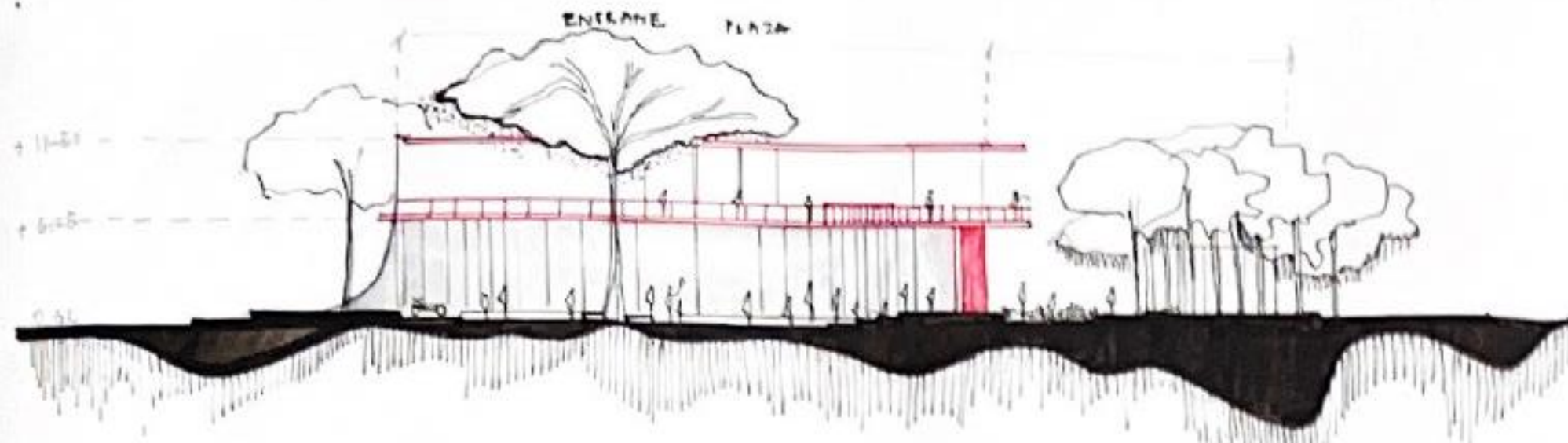


**LEGEND**

- 1. COLLABORATIVE STUDIO - 8425 - 100m<sup>2</sup> each
- 2. WORKY CLAMP - 8700 - 80m<sup>2</sup> each
- 3. SEMINAR ROOM - 110 CAPACITY - 2700 - 100m<sup>2</sup> each
- 4. MULTI PURPOSE HALL - 2500 - 80m<sup>2</sup> each
- 5. FOOD COURT - 1000 (100 CAPACITY) - 200m<sup>2</sup>
- 6. HUMAN RESOURCE CENTRE
- 7. MEETING ROOMS - 11000 - 100m<sup>2</sup> each
- 8. CONFERENCE ROOM - 1000 - 50m<sup>2</sup> each
- 9. STAFF AREA - 1000 - 50m<sup>2</sup>
- 10. HONEY ROOM - 2000 - 50m<sup>2</sup>
- 11. OTHER LEARNING WORKSHOPS - (TRAINING AREA) - 10000 - 100m<sup>2</sup>
- 12. CASCHE LEARNING LABS - 8000 - 80m<sup>2</sup> each - 400m<sup>2</sup>
- 13. OAT - 4000m<sup>2</sup>
- TOTAL GROUND FLOOR AREA - 100000m<sup>2</sup>

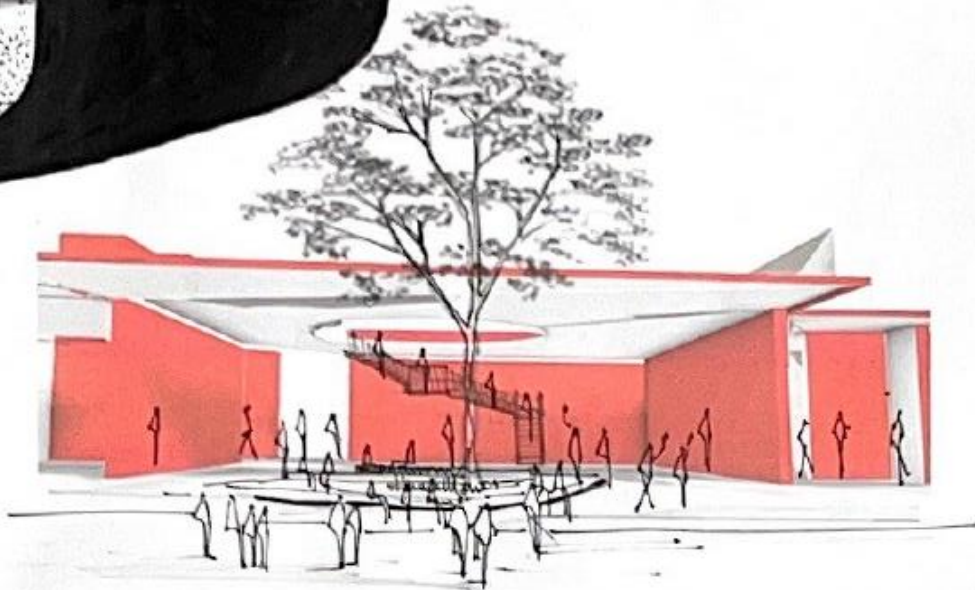
GROUND FLOOR PLAN

SCALE: 100m

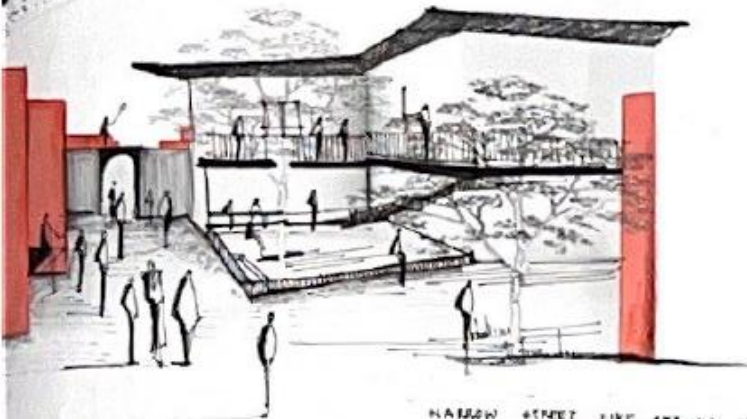




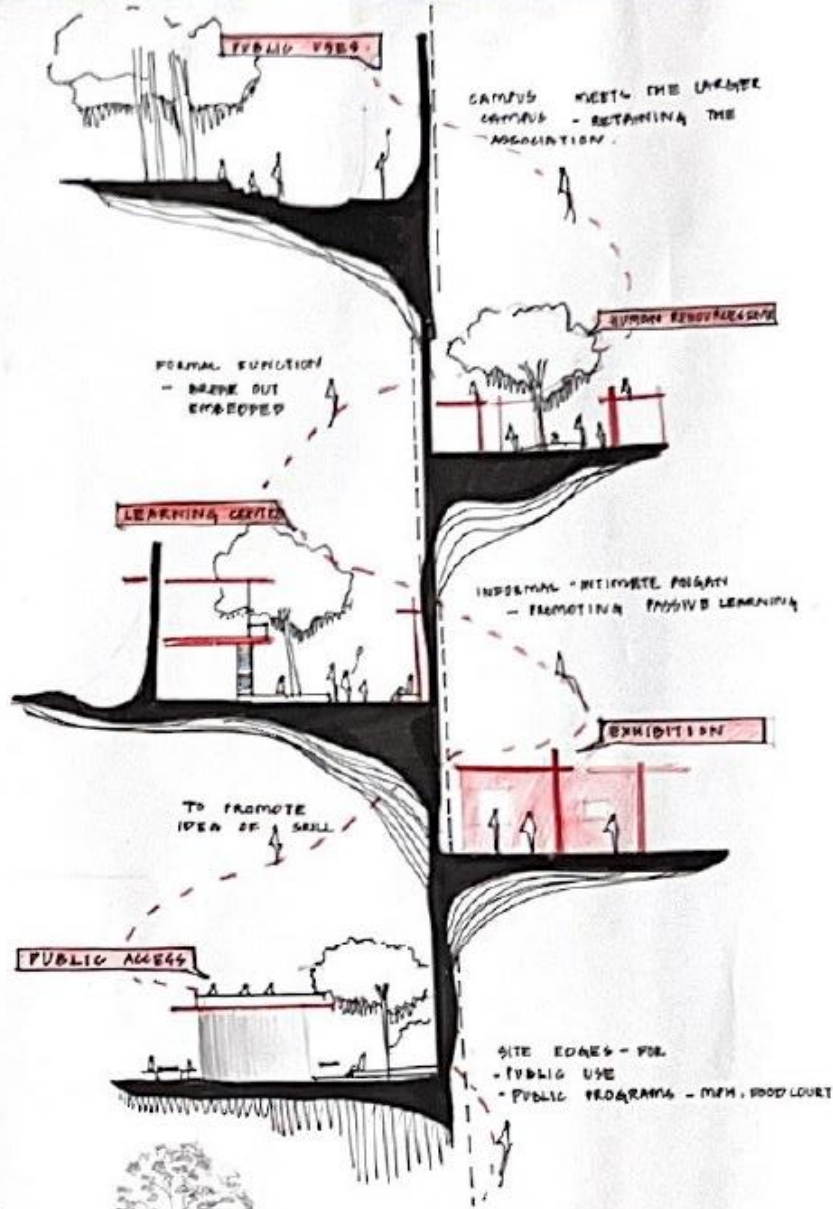
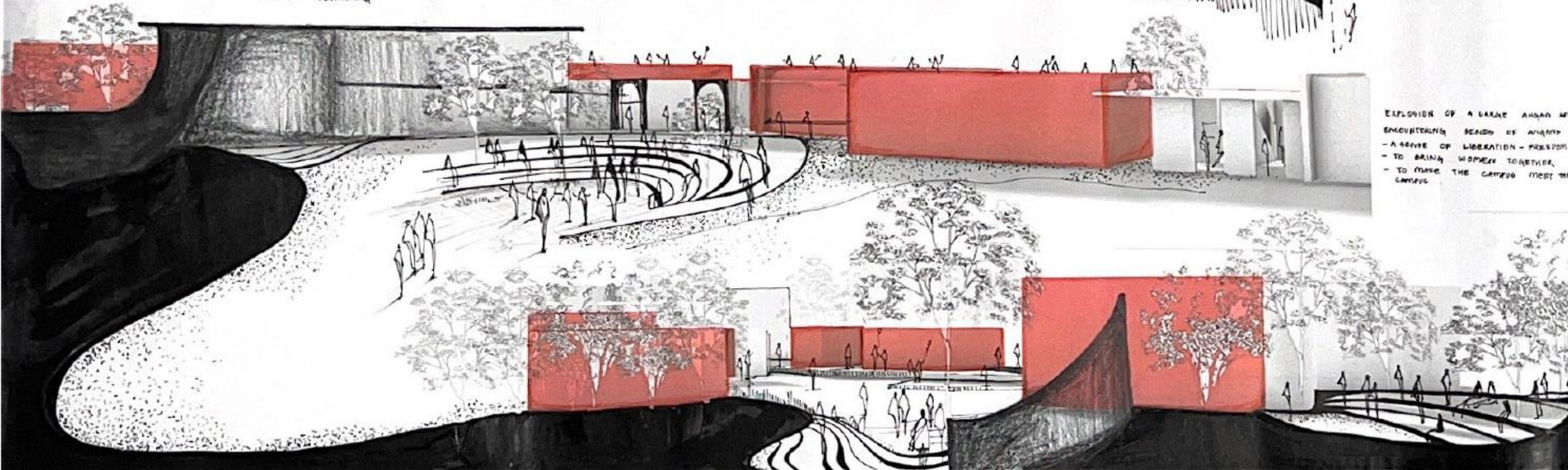
WILDBRENS - VERBUT - BUILT  
AS AN EXTENSION OF THE PROJECT



PROVISION OF BREAKOUT SPACES - LEISURE AREAS - IN  
CLOSE PROXIMITY TO PUBLIC - AND - STUDIO SPACES - HELPS  
IN BUILDING RELATIONS WITH EACH OTHER



NARROW STREET LIKE SET-UP IN EDUCATION ZONE  
HELPS - IN CREATING CHANGE - COUNTER AND ENHANCES  
PASSIVE LEARNING



EXPLOSION OF A LARGE AREA OF  
ENCOUNTERING SEASONS OF ANIMALS  
- A SENSE OF LIBERATION - PRESSION  
- TO BRING WOMEN TOGETHER  
- TO MAKE THE CAMPUS MEET THE  
CAMPUS