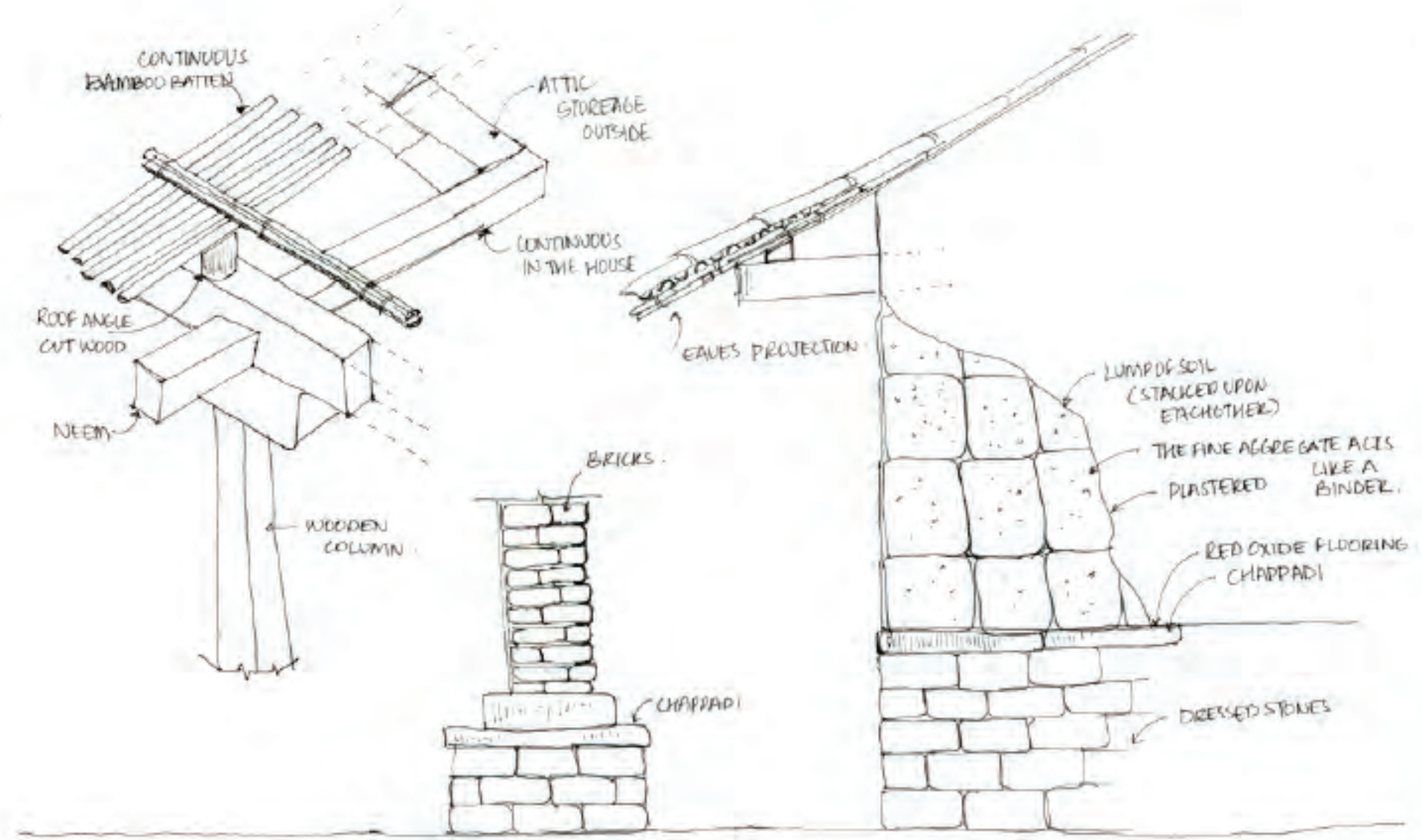
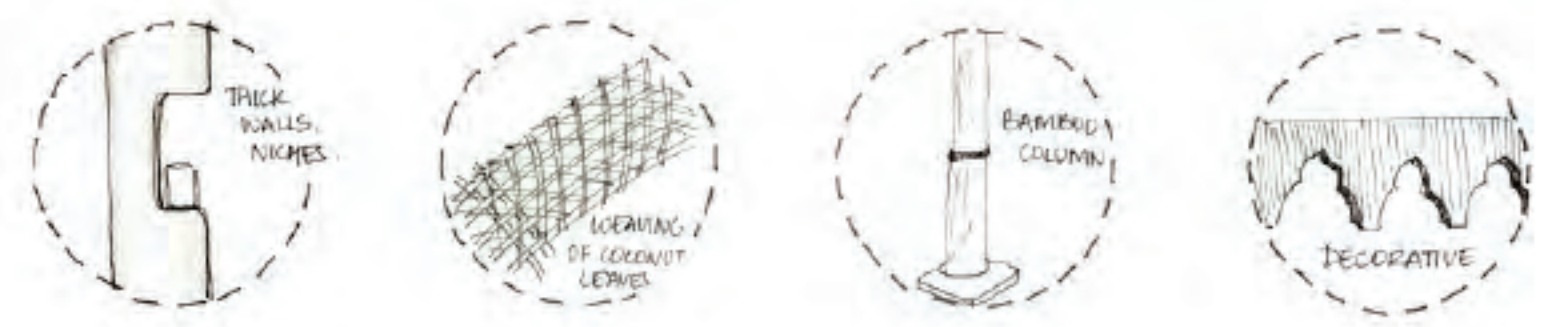
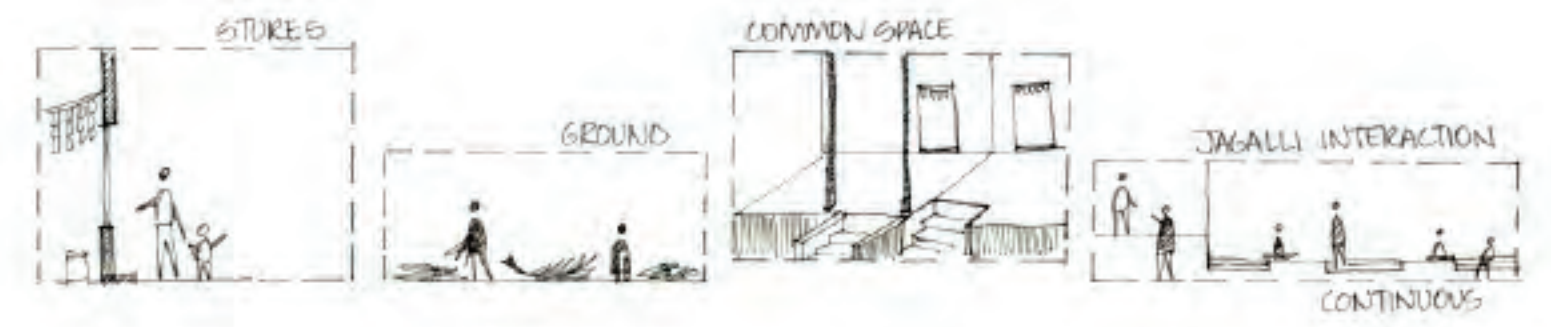


ROOF PLAN



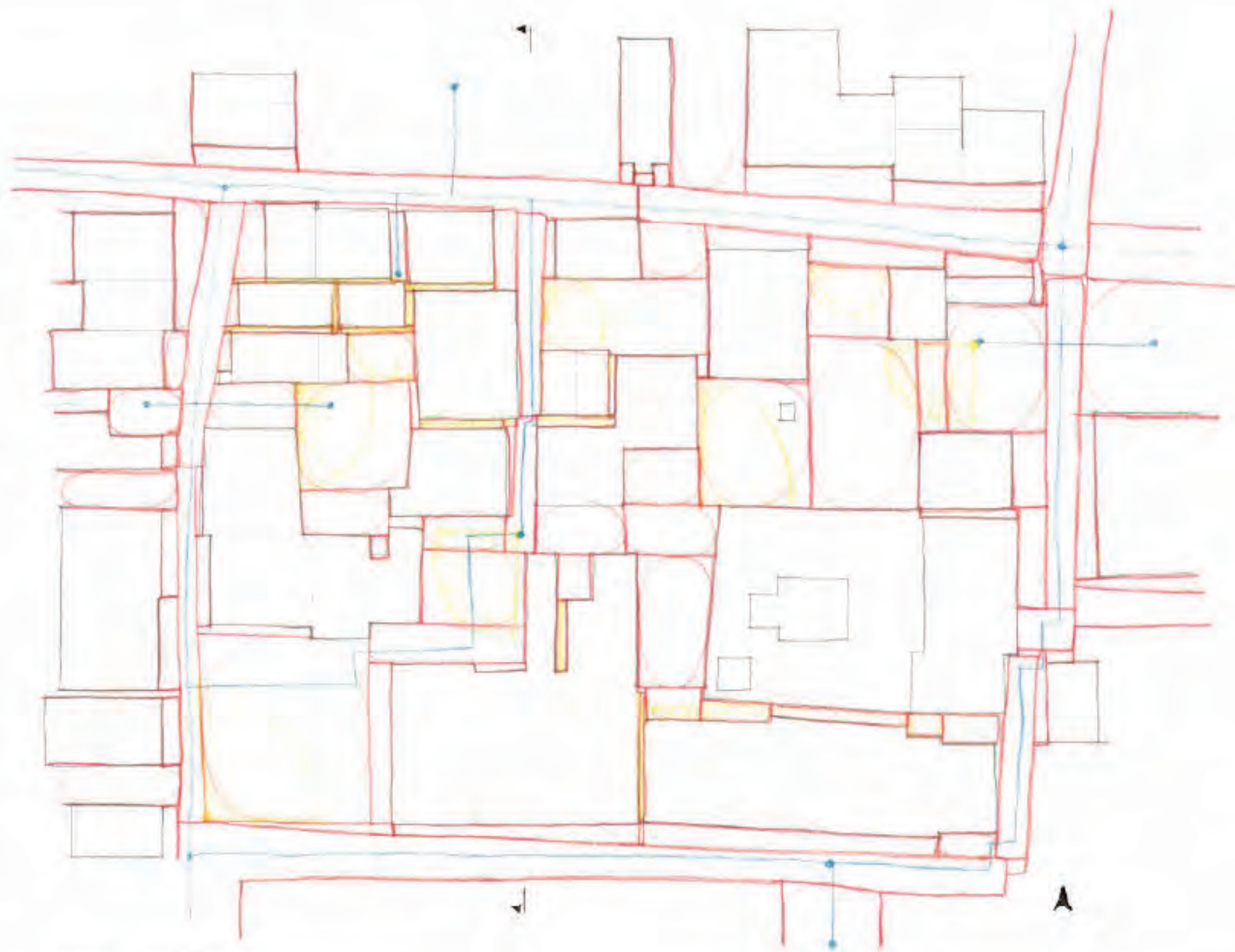
CONSTRUCTION DETAILS.



SOUTH ELEVATION [FACING THE TEMPLE]

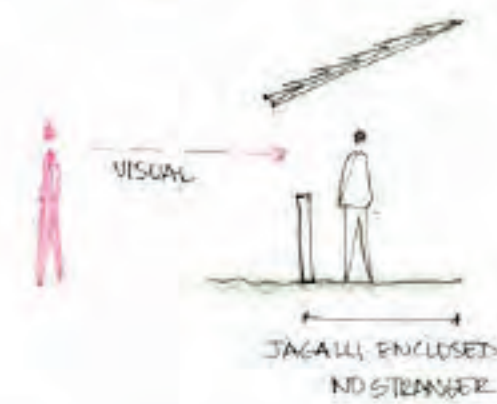
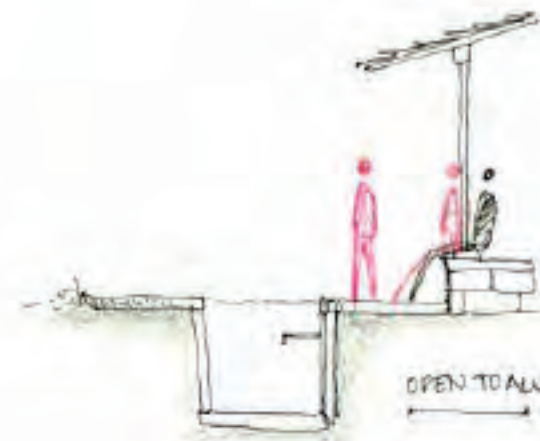
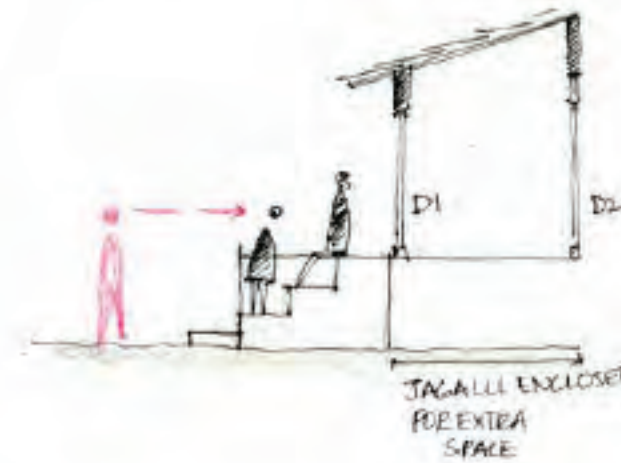
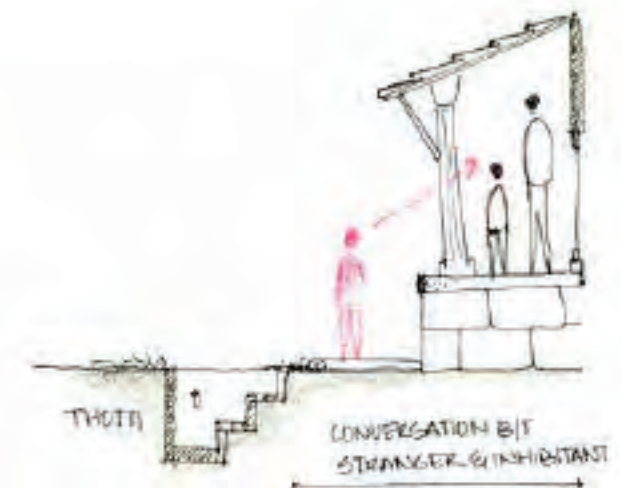


WEST ELEVATION.

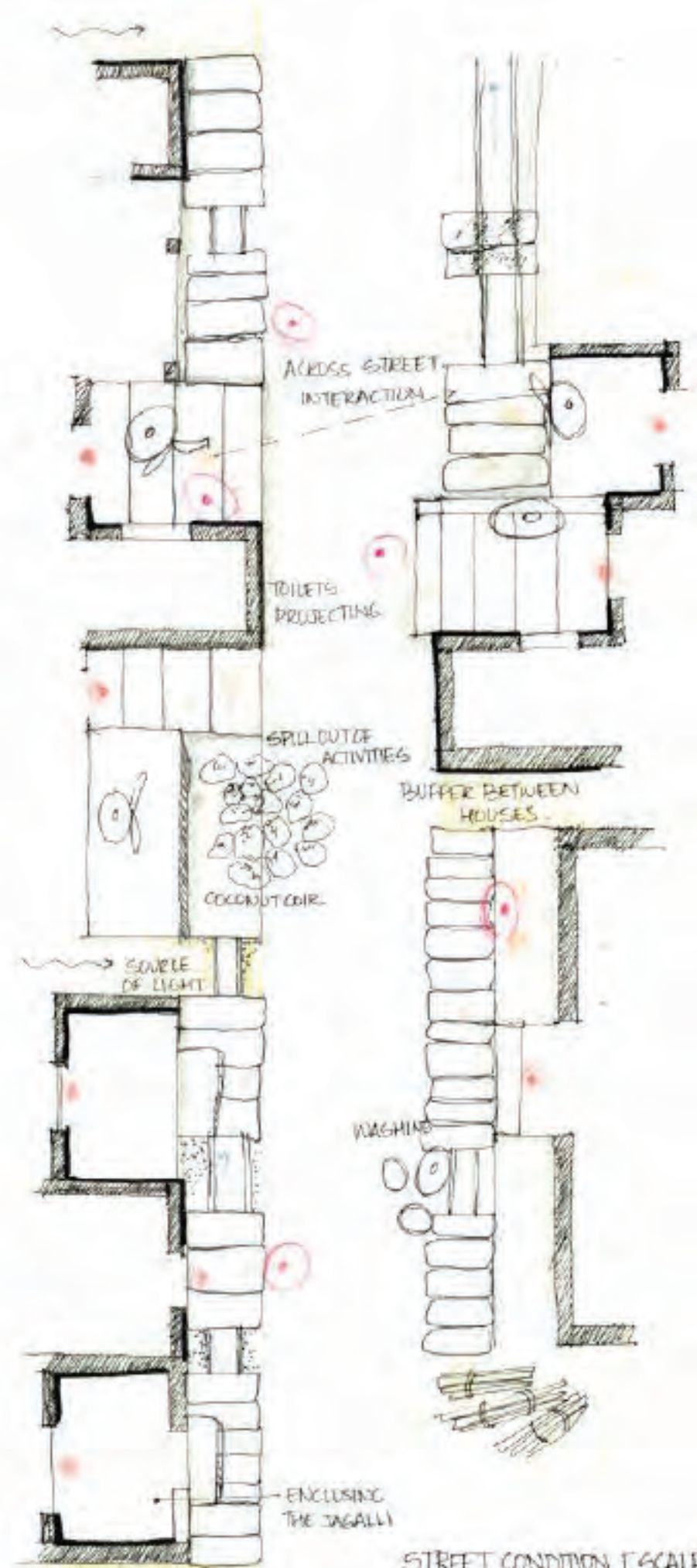


CONVEX MAPPING.

- CONVEX SHAPE
- AXIAL LINES
- CONE OF VISION

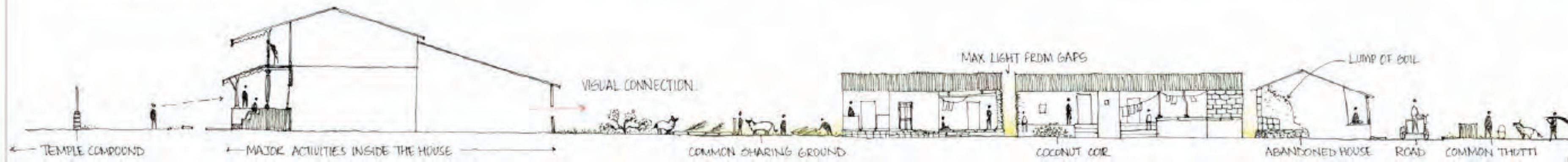


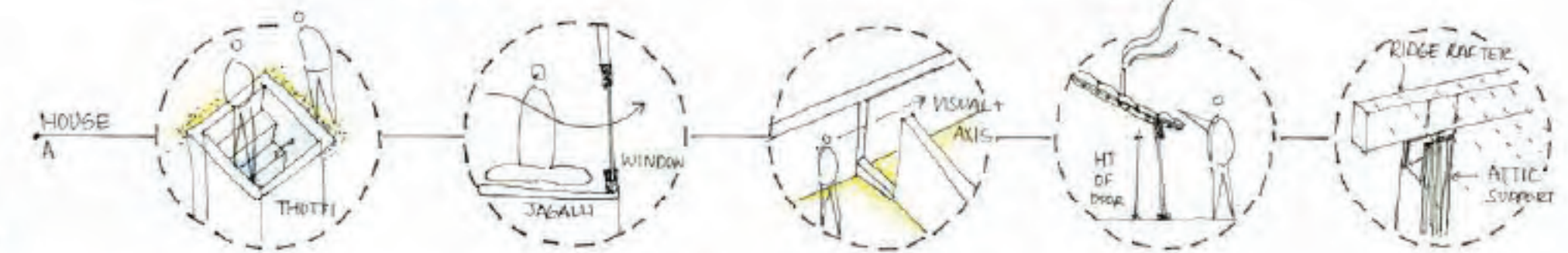
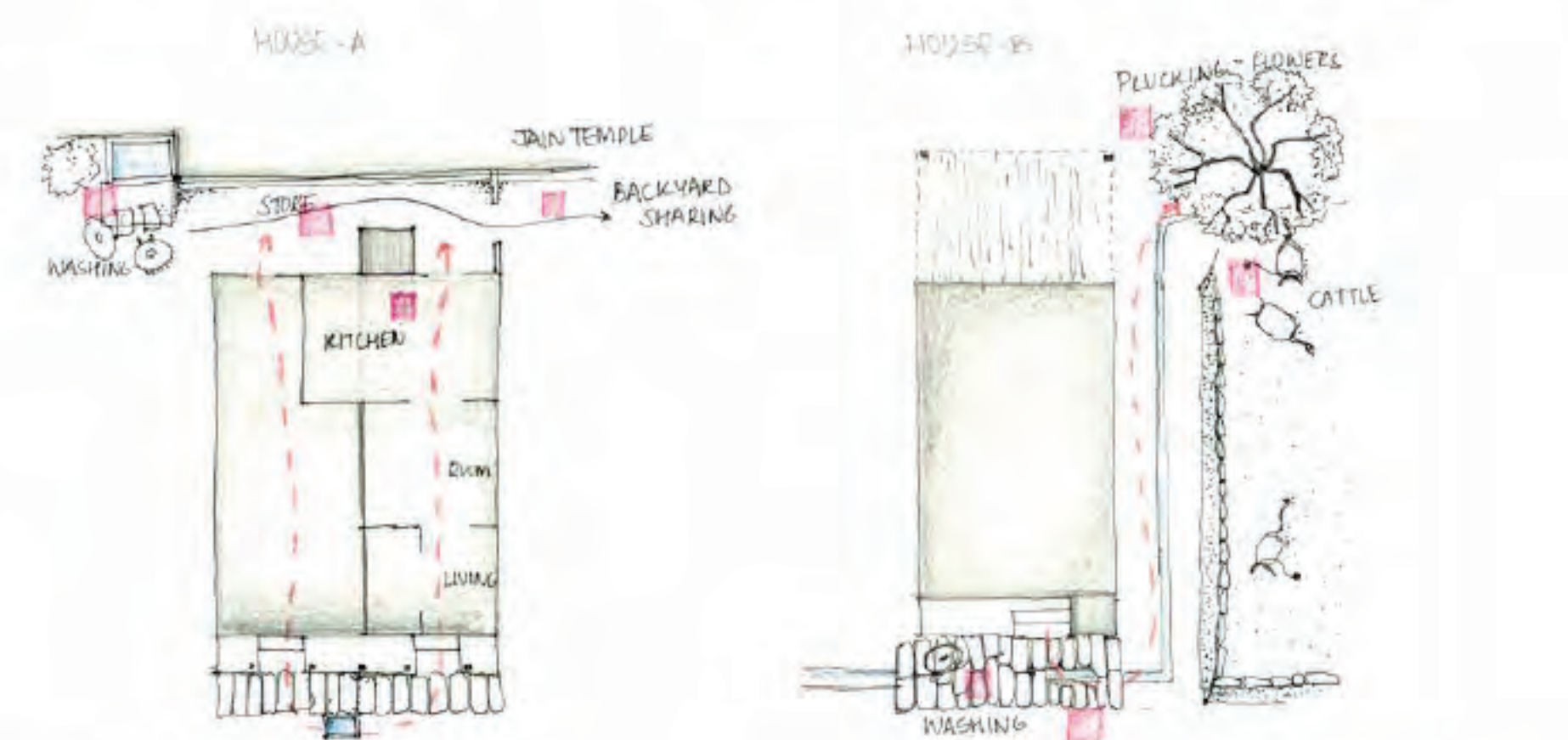
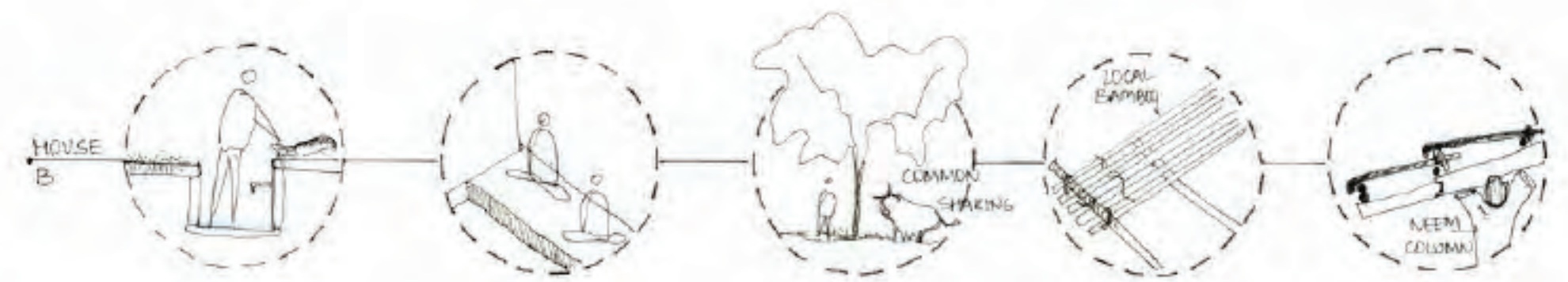
STRANGER - INHABITANT RELATION



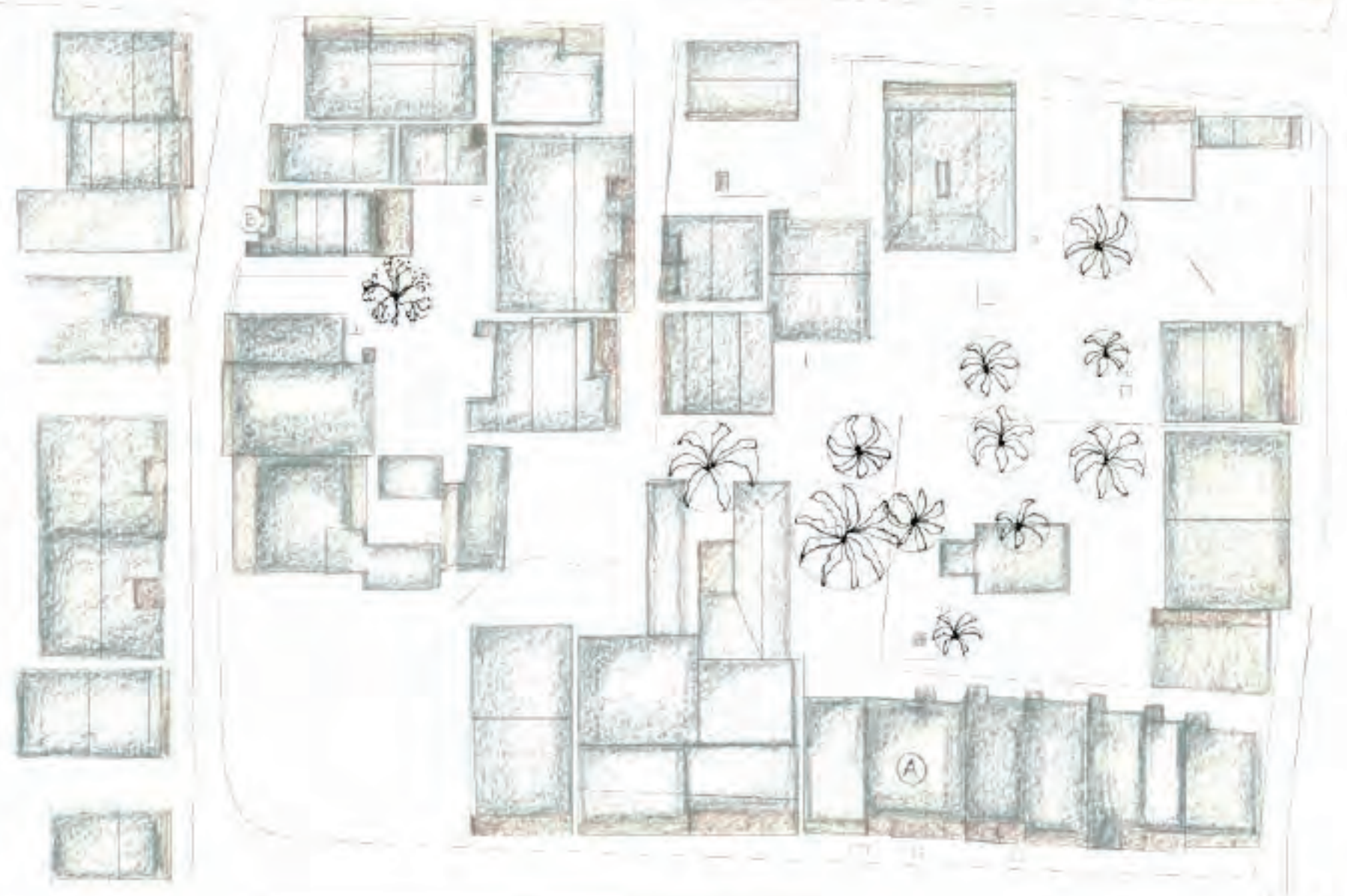
STREET CONDITION [SCALE - 1:100]
(THE STRANGER BECOMES THE PART OF ALL ACTIVITIES / CONVERSATIONS)

SECTION BETWEEN THE TEMPLE AND FIELDS

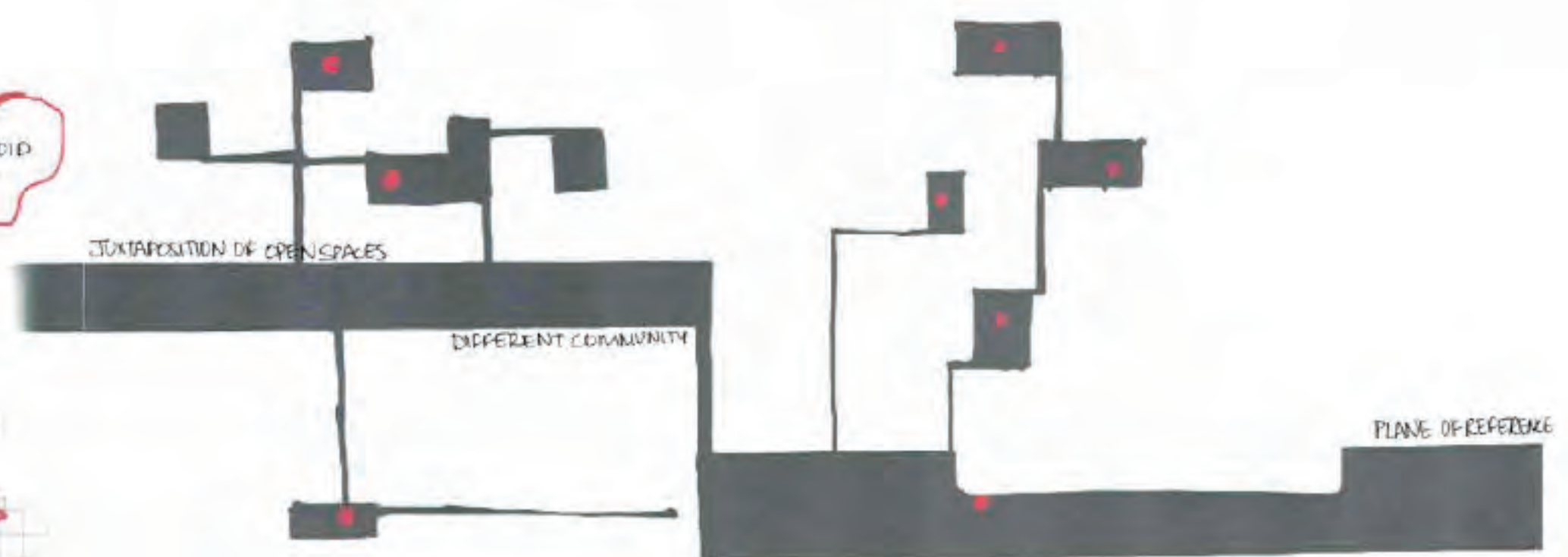




WATER BODY THE SEMI-COVERED AREA BACKYARDS ROOF DETAIL MATERIAL

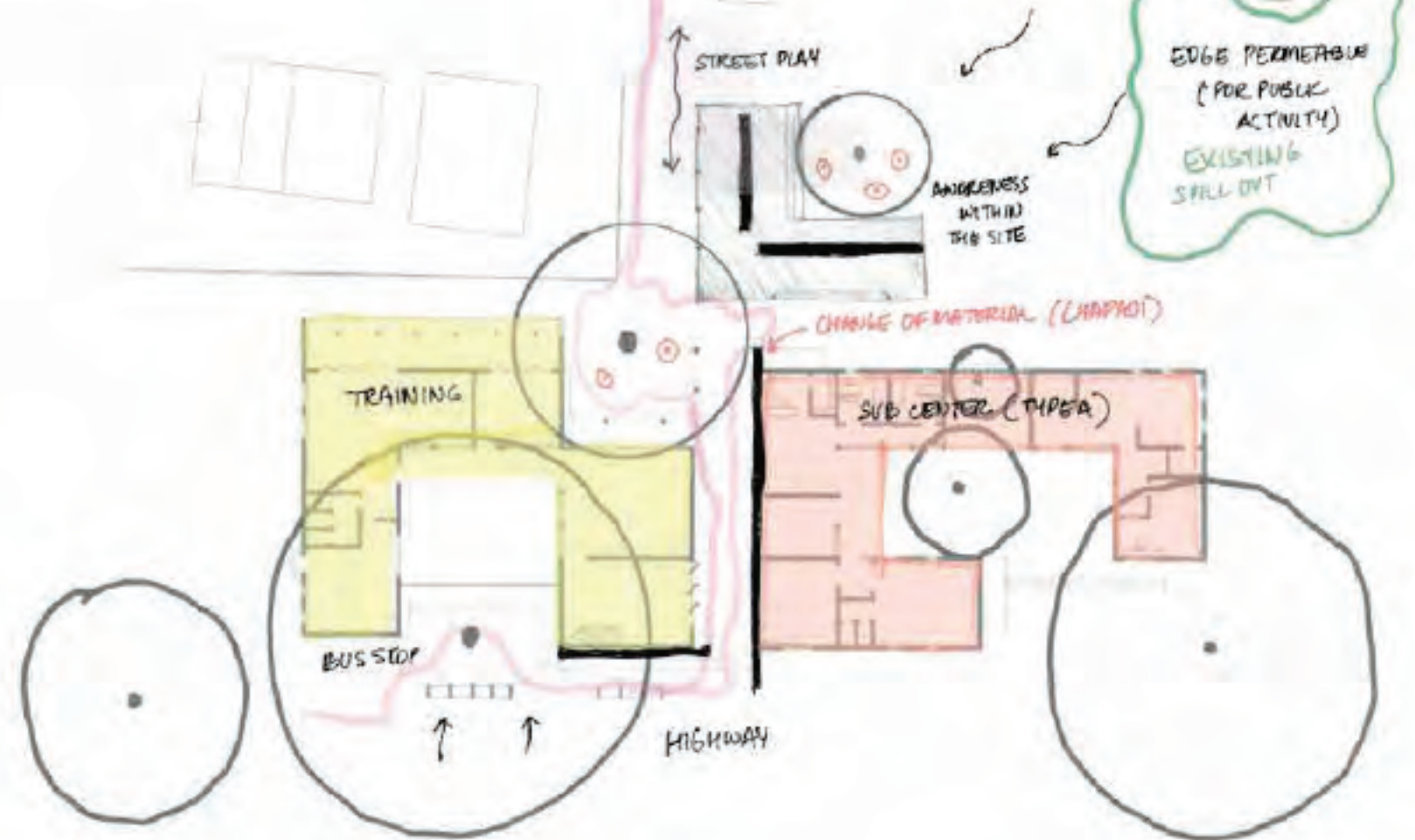


— COVERED
 - - - SEMI-COVERED

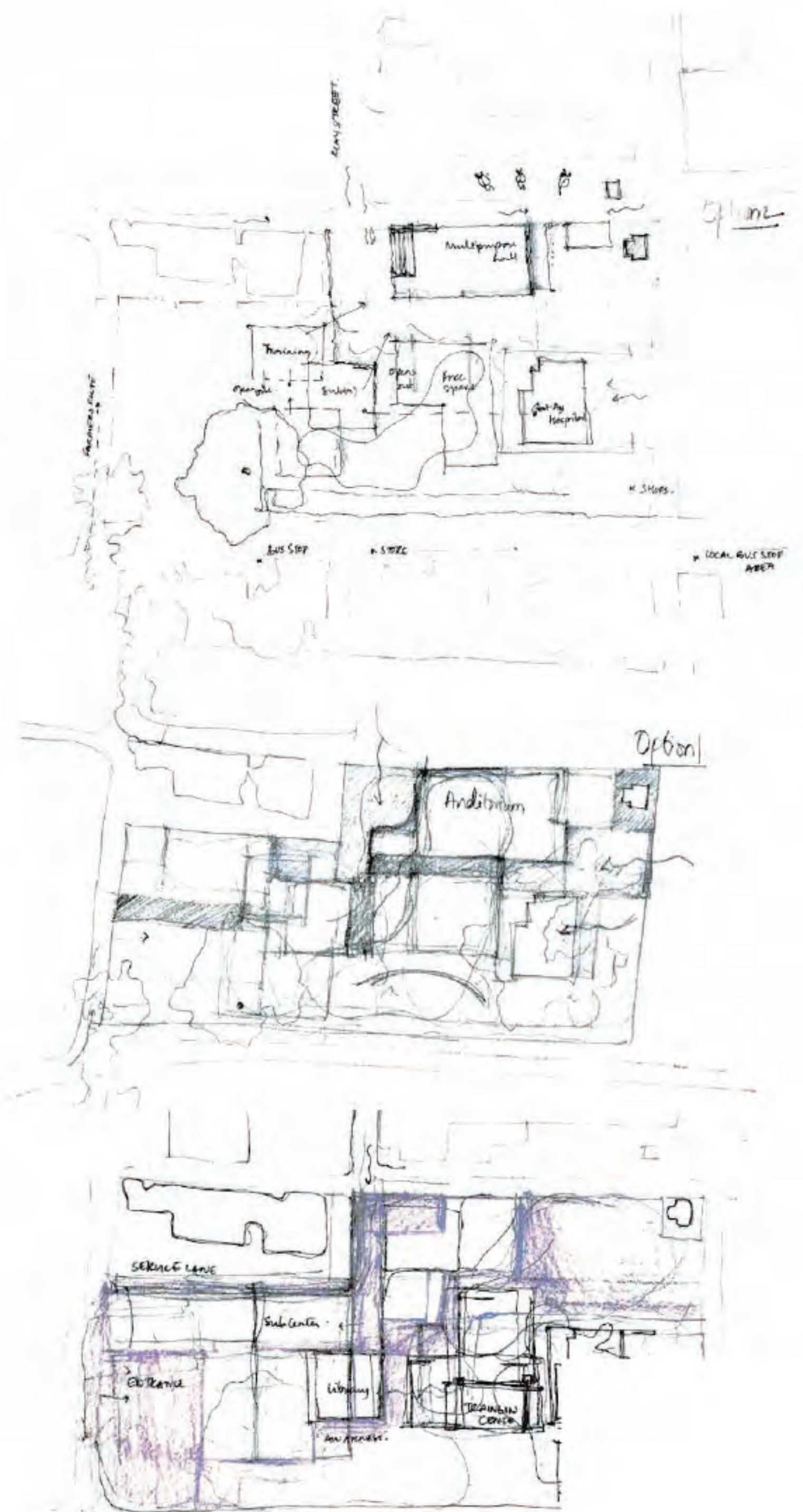




Mapping of the existing activities of women



The program intends to train auxiliary nurses and midwifery which are the first contact point between the primary health care system and the community. The program allows for 60 trainees with 25 nurses teaching and 5 permanent nurses for the sub center (type A) who provide care to pre and post maternity care. The existing government hospital has also been visited.





WATER

WATER

KIDS PLAY AREA

FARMHOUSE

SHOP

SHOP

BUS STOP

SCHOOL

MARKET

TEMPLE

31m

10m

10m

10m

10m

10m

10m

10m

10m

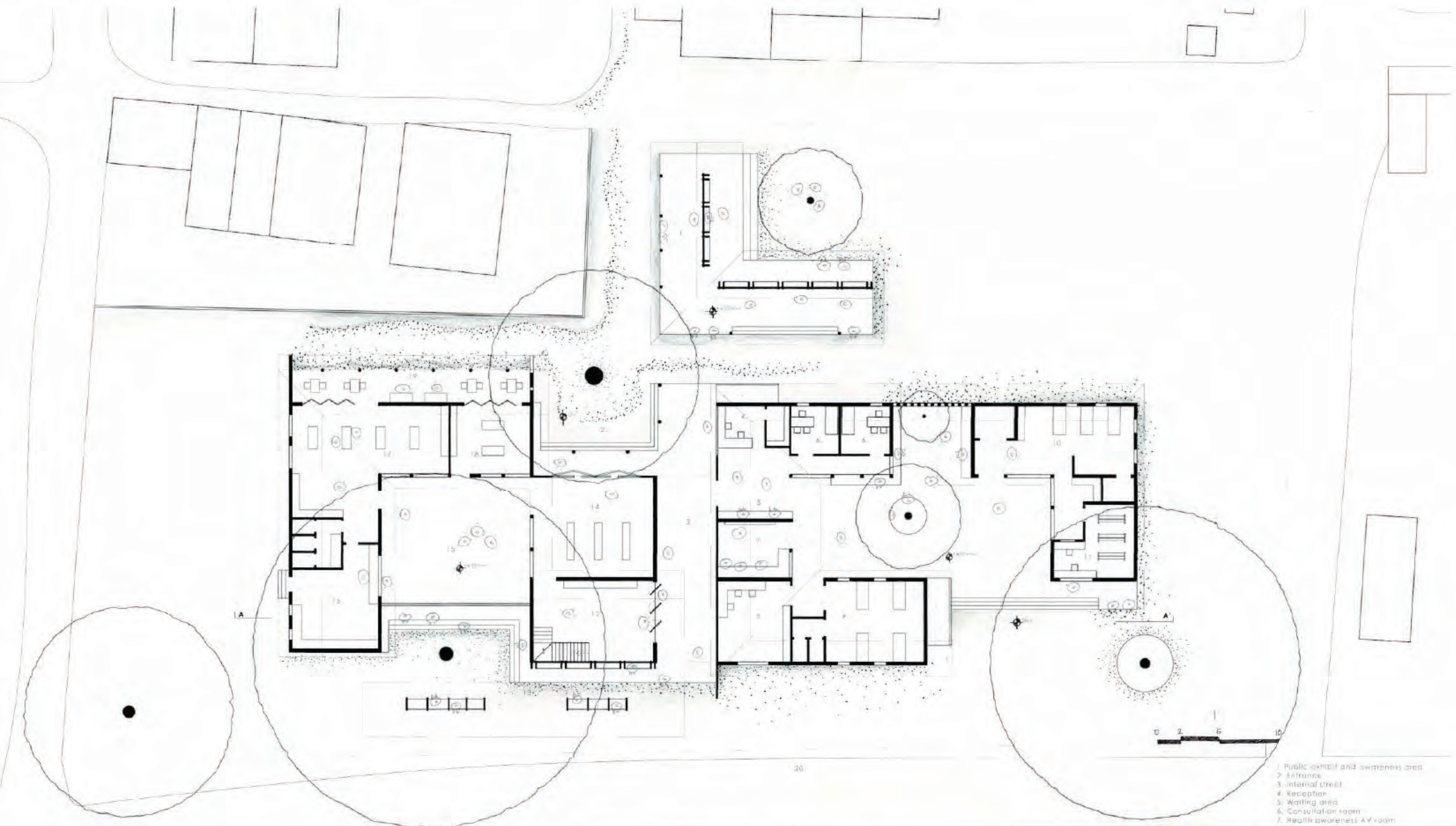
10m

10m



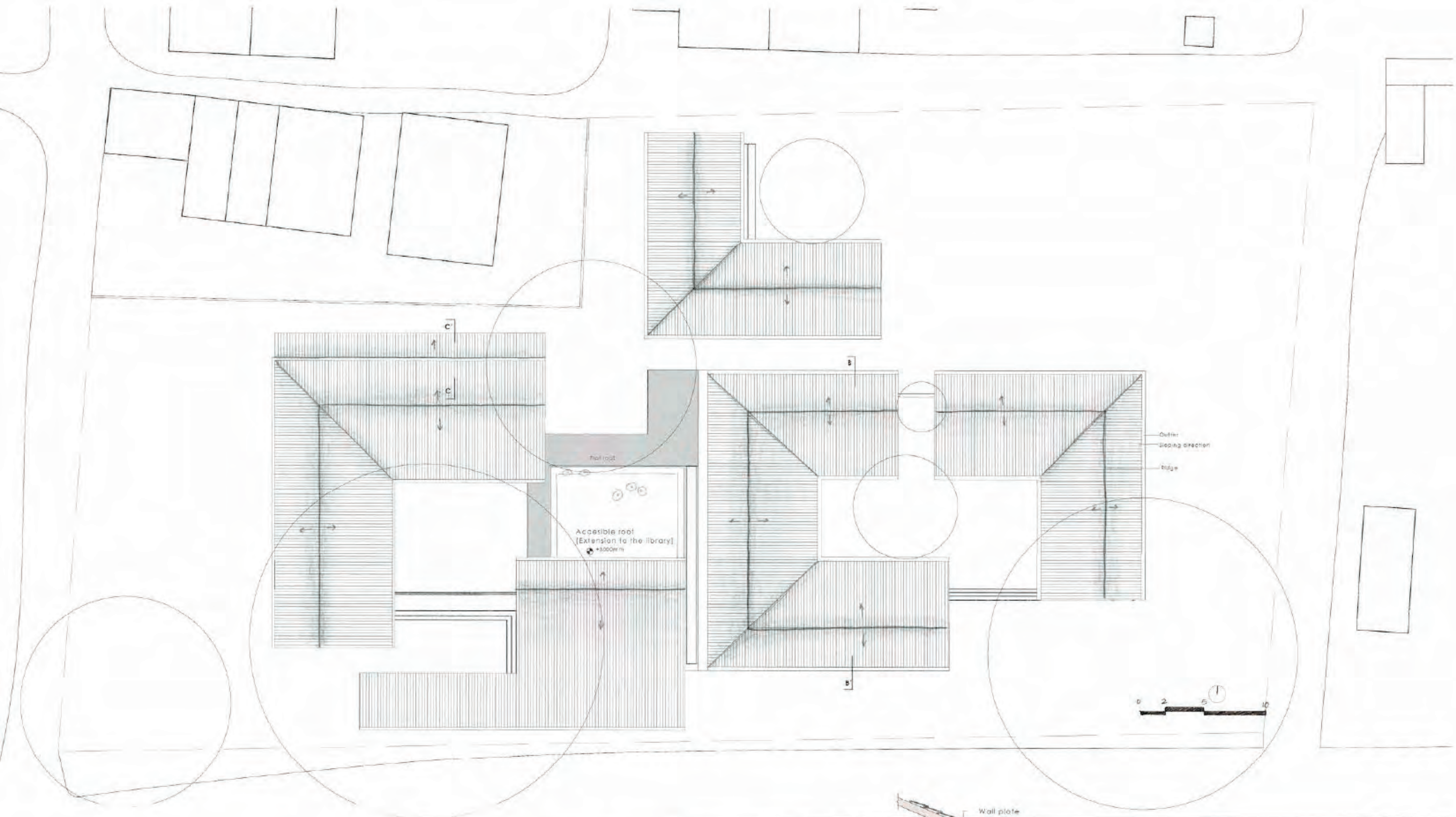
Sites identified for different programs





- 1. Public exhibit and awareness area
- 2. Entrance
- 3. Internal street
- 4. Reception
- 5. Waiting area
- 6. Consultation room
- 7. Health awareness AV room
- 8. Nurse station
- 9. Wards for maternity care
- 10. Emergency wards
- 11. Pharmacy
- 12. Library
- 13. Public newspaper and bus stand
- 14. Research exhibit for trainees
- 15. Outdoor workshop and canteen site
- 16. Canteen
- 17. Training classrooms
- 18. Lab

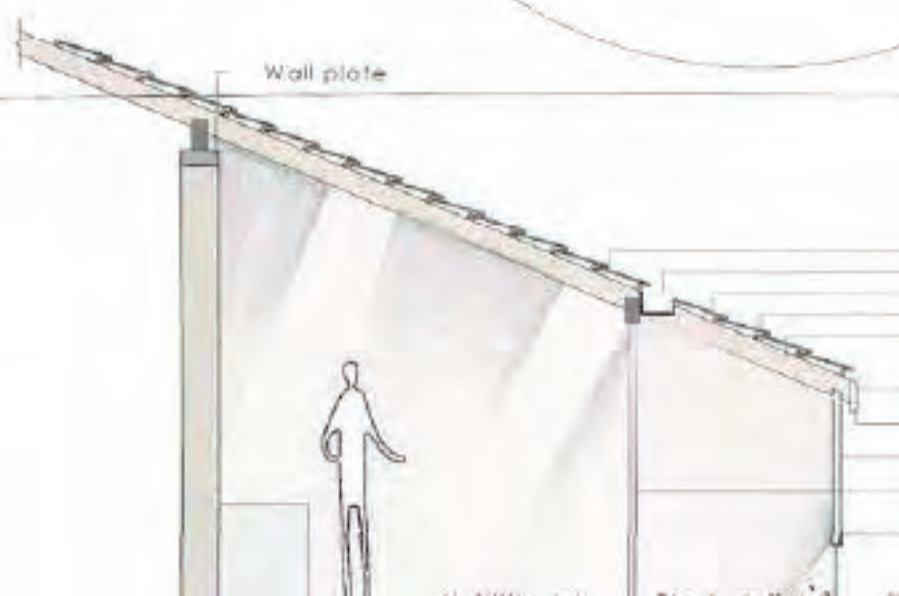




flat roof

Accessible roof
[Extension to the library]
+5000mm

Gutter
Sloping direction
Ridge



- Glass Mangalore tiles
- Gutter
- Mangalore tiles
- Battens (25x25mm)
- Rafter (100x50mm)
- Eaves
- Drip mould
- Extending eaves
- Wooden post
- Metal frame
- Drain