

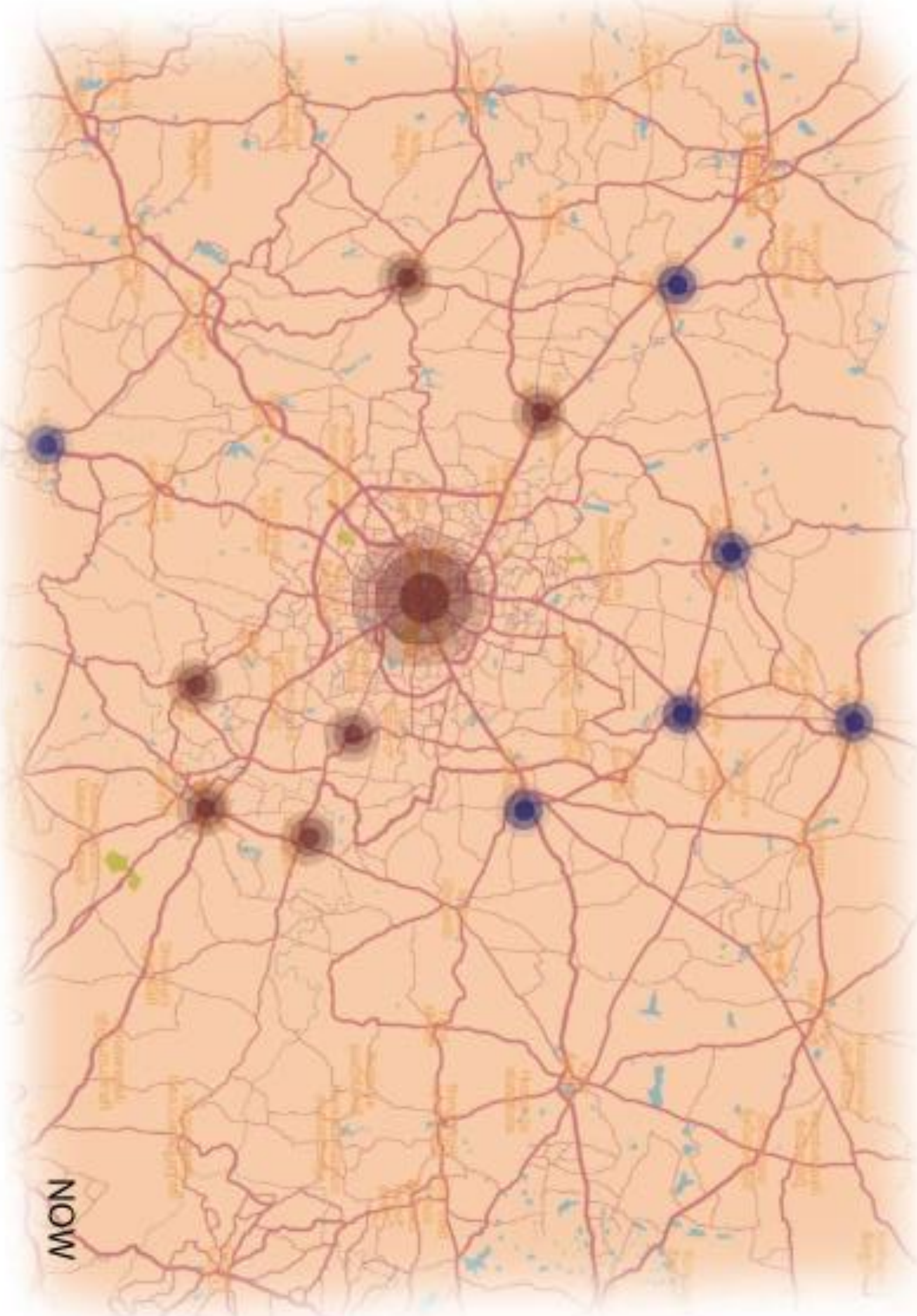
ARCHITECTURAL DESIGN VII – PORTFOLIO

URBAN DESIGN — AREA OF STUDY – DEVANAHALLI (PERI
URBAN OF BENGALURU)

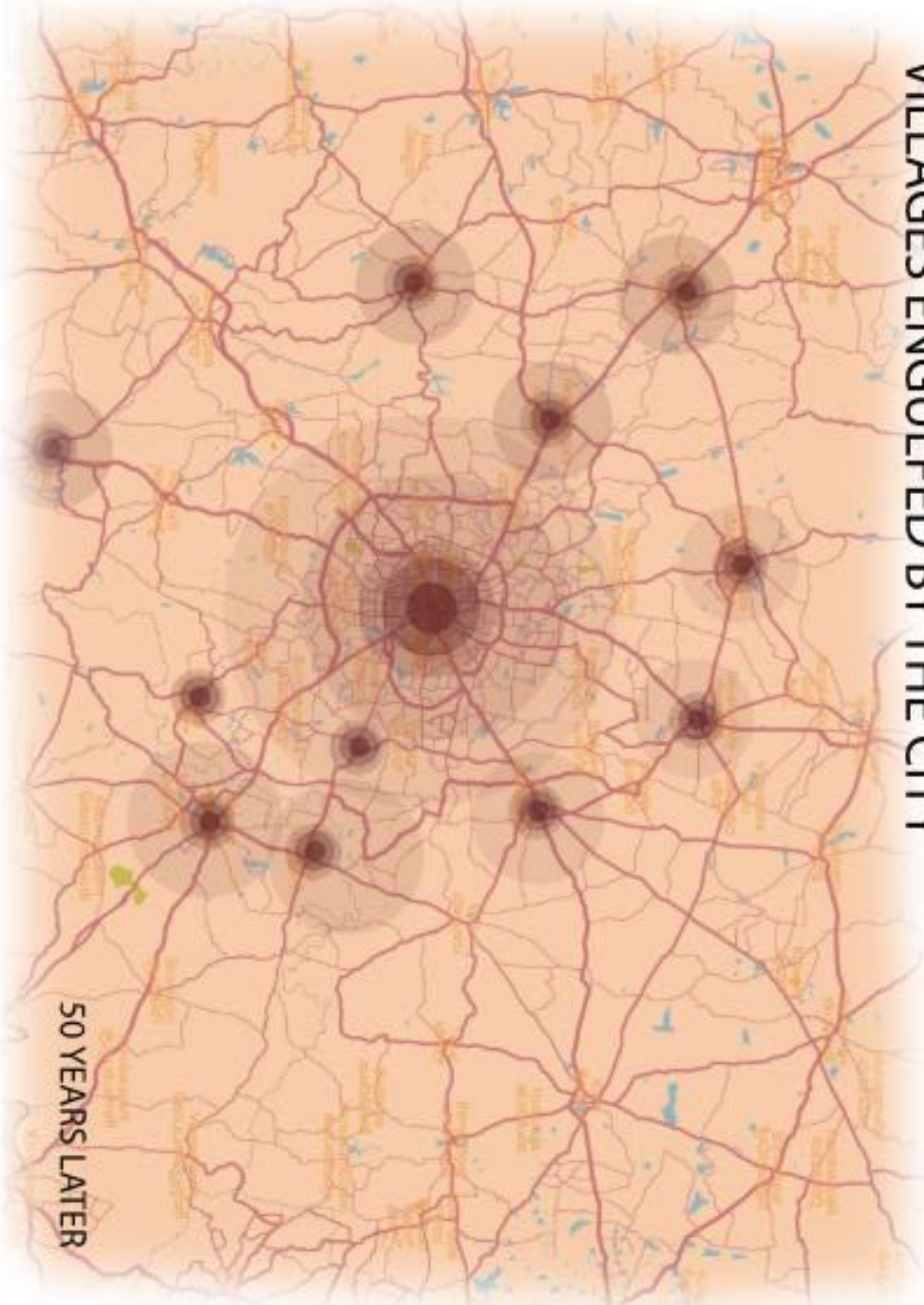
CONCEPT – ENVISAGING A RAINFOREST IN DEVANAHALLI TO
CHANGE THE MICRO-CLIMATE OF THE SPACE

PROJECT TITLE - VANAPRAVAHA(FOREST FLOW)

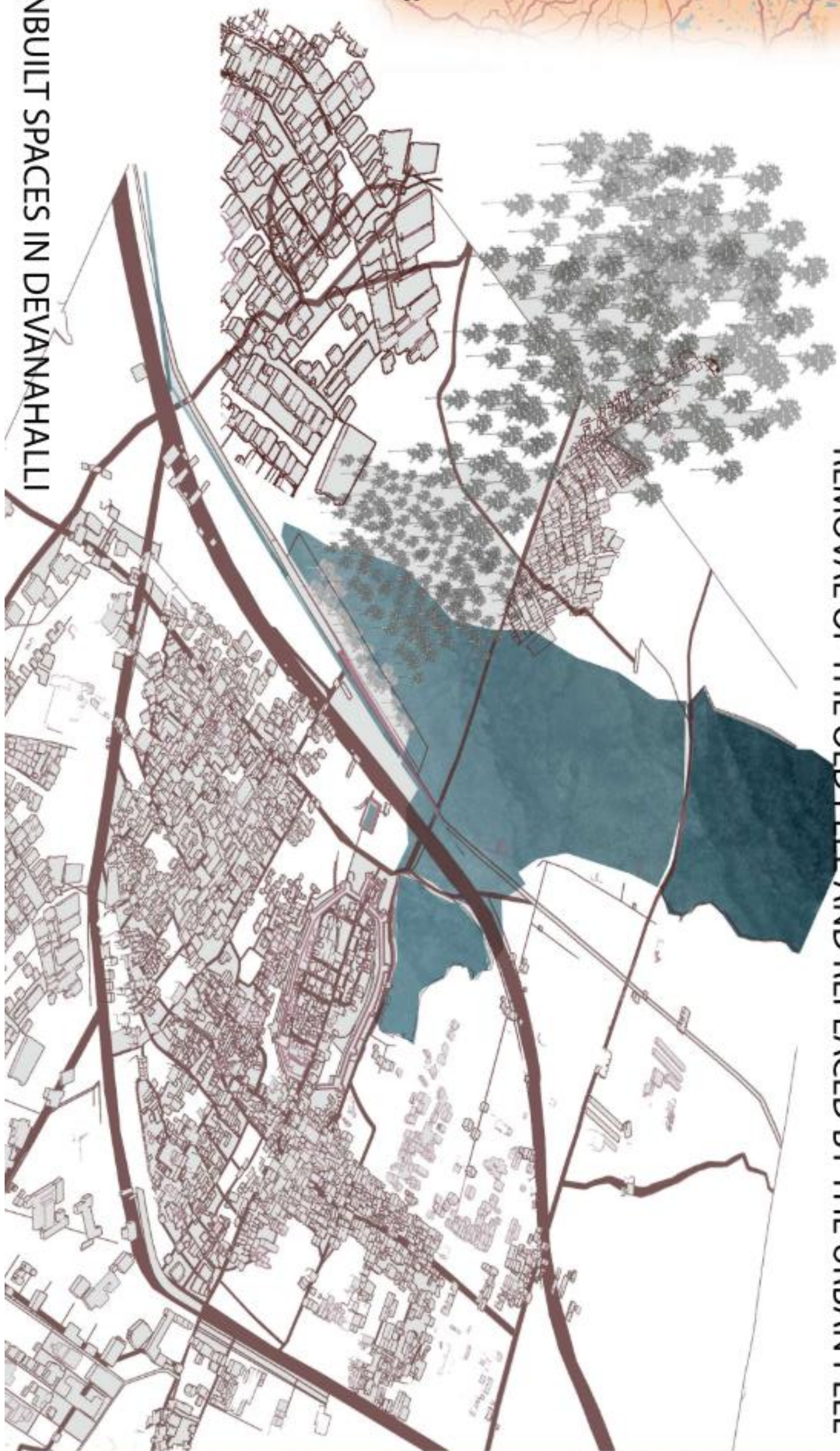
BENGALURU AND ITS NEIGHBOURING VILLAGES



VILLAGES ENGULFED BY THE CITY



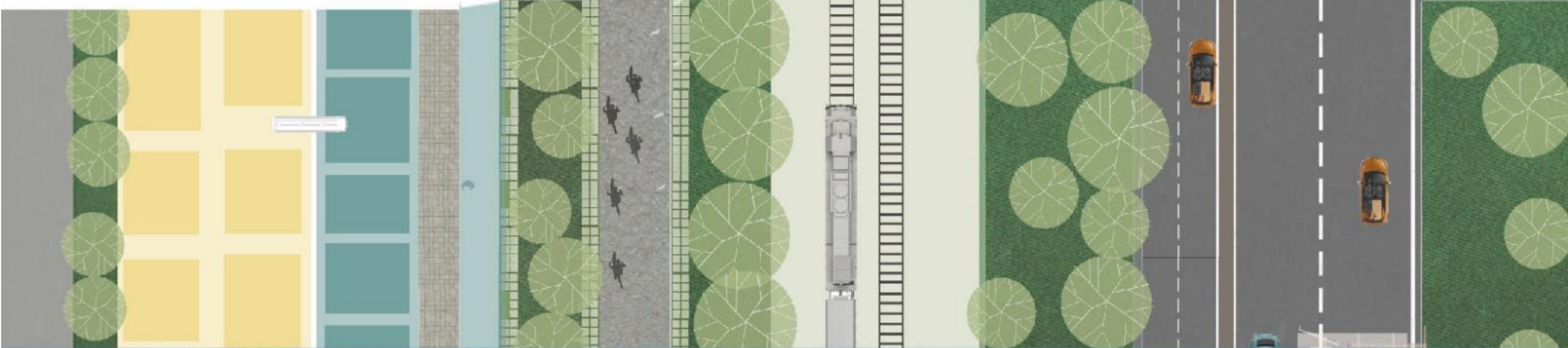
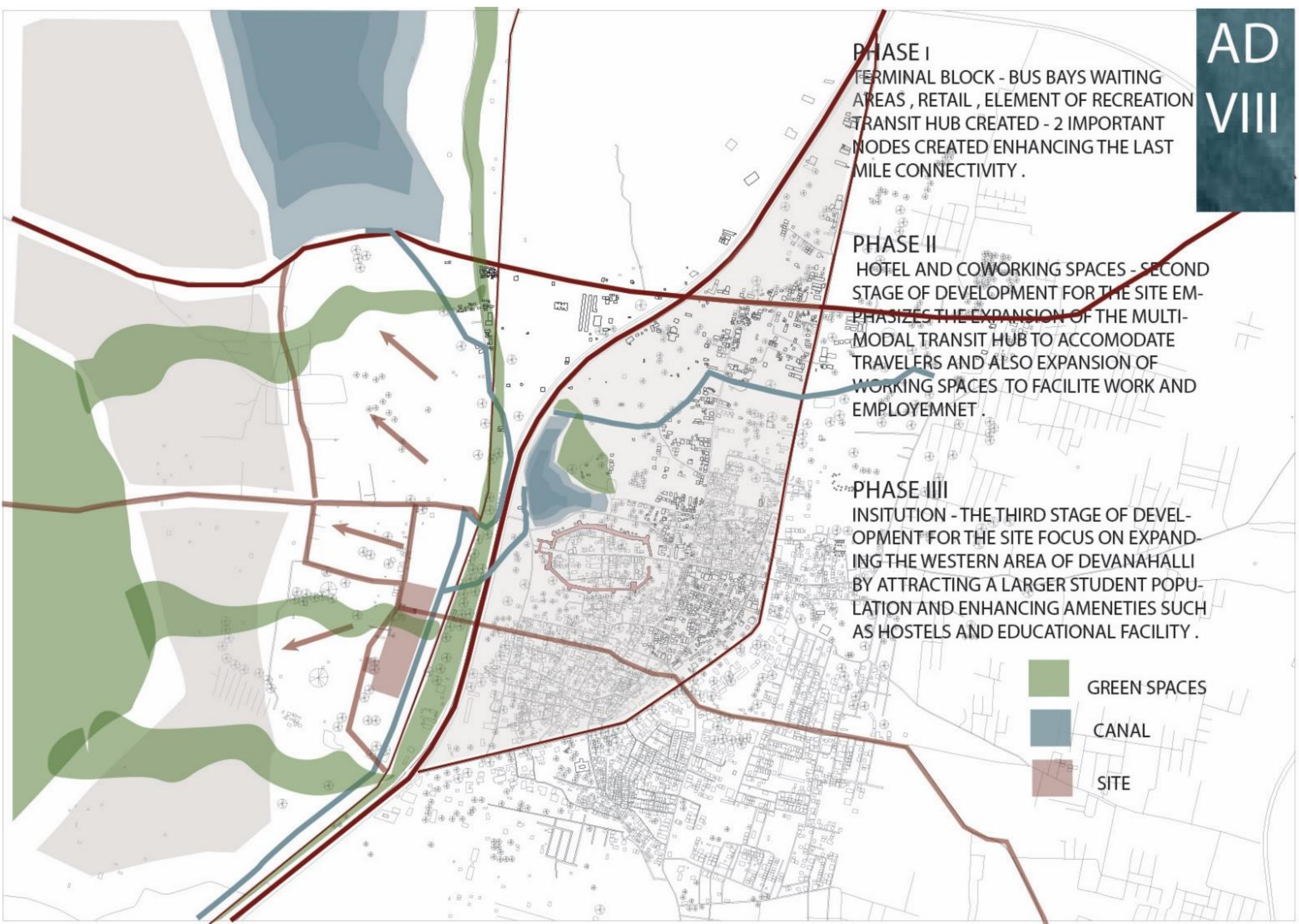
BRINGING BACK THE PEEL OF UNBUILT SPACES IN DEVANAHALLI



REMOVAL OF THE OLD PEEL AND REPLACED BY THE URBAN PEEL



IDEA OF REVERBERATION AND PEEL



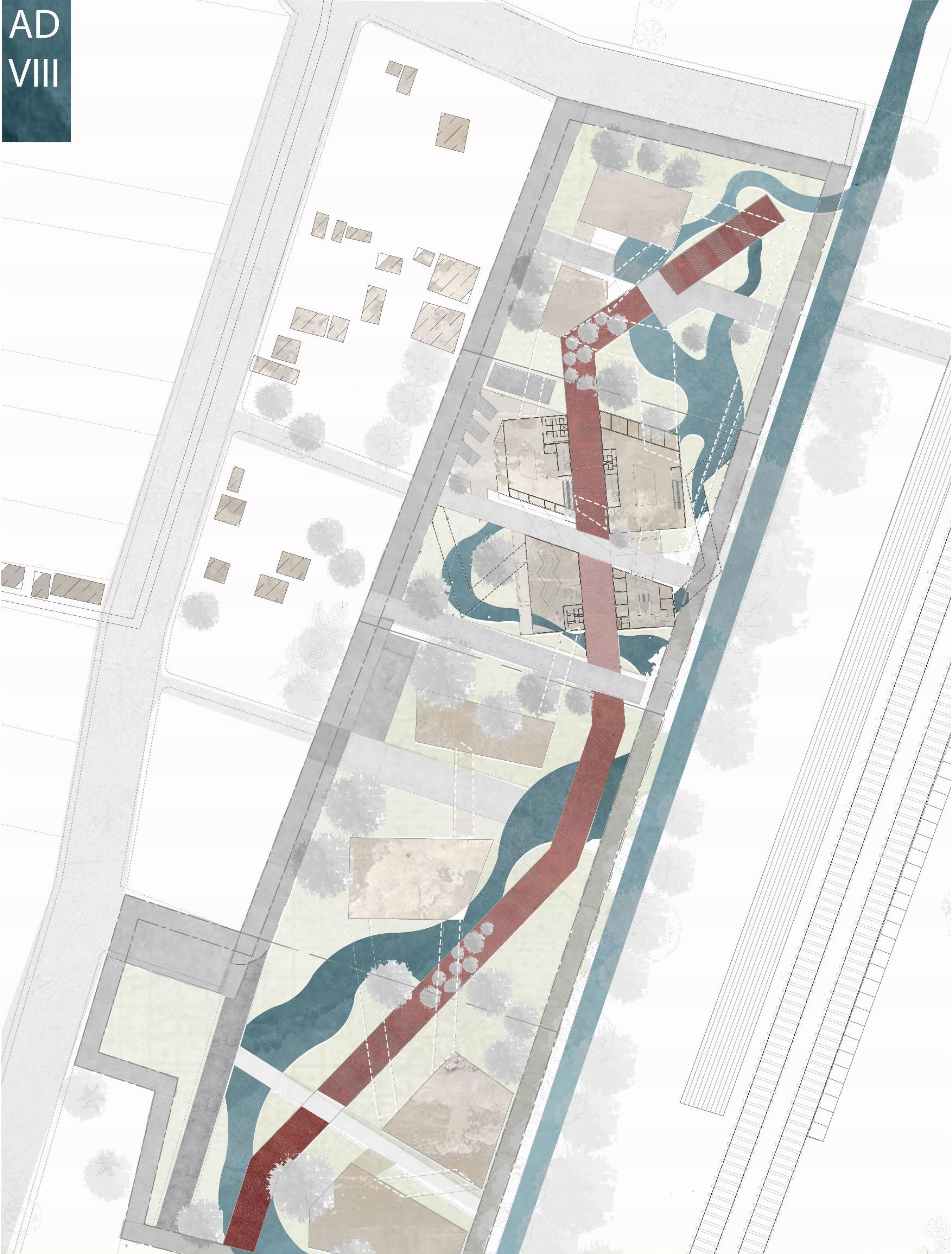
URBAN STRATEGIES

CHUMKI MANDAL
1RW20AT018



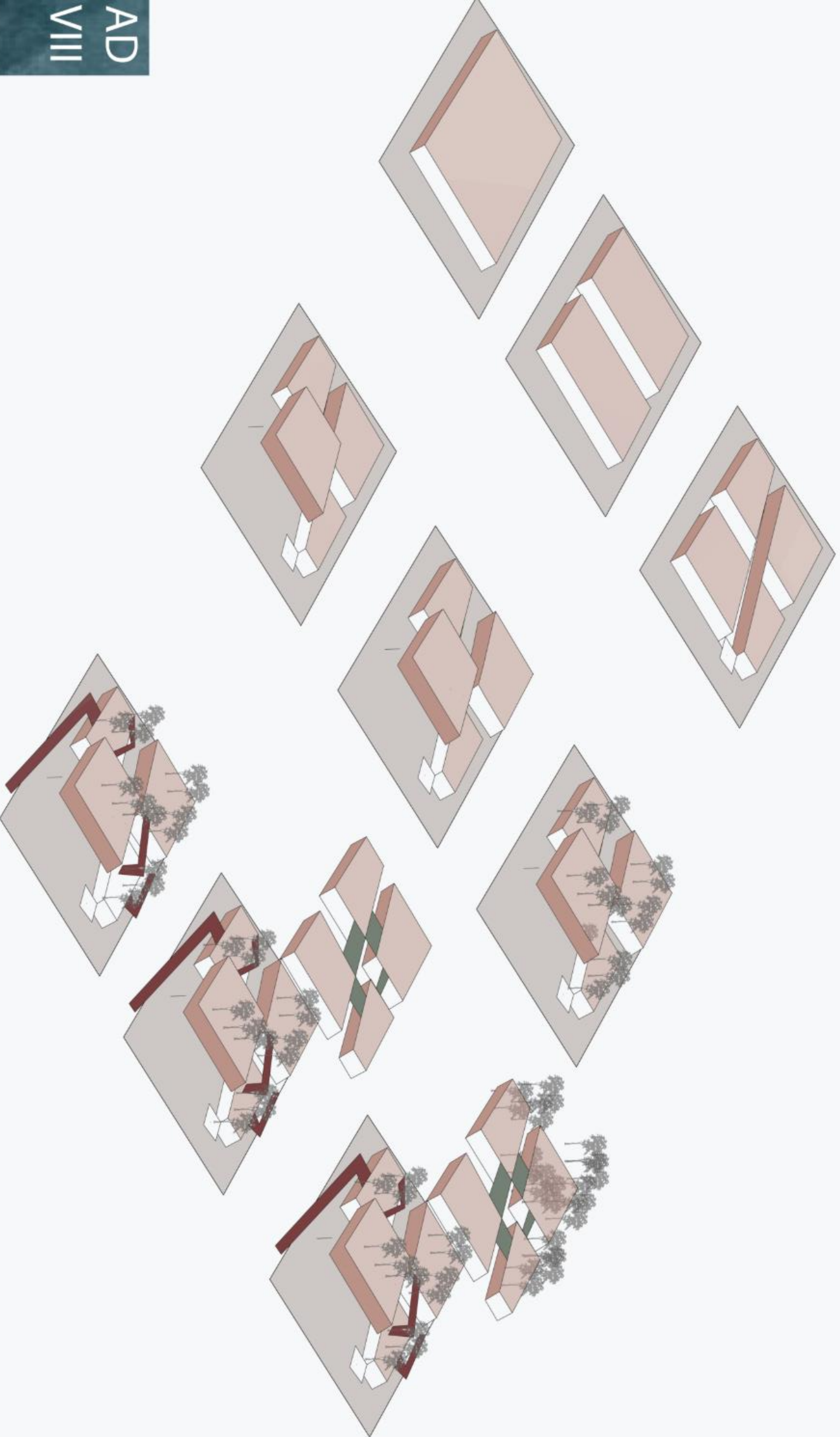
LARGER IDEA OF UNBUILT SPACES ▲





FORM DEVELOPMENT

CHUMKI MANDAL_1RW20AT018



FIRST FLOOR PLAN- AREA -

- FOOD STALL
- GREEN SPACE
- CORE
- ELEMENT OF WATER

SECOND FLOOR PLAN- AREA -

- RETAIL
- GREEN SPACE
- CORE
- ELEMENT OF WATER



THIRD FLOOR PLAN- AREA -

- RETAIL
- GREEN SPACE
- CORE
- ELEMENT OF WATER

FOURTH FLOOR PLAN- AREA -

- FOOD COURT
- RETAIL
- GREEN SPACE
- CORE
- ELEMENT OF WATER
- FOOD STALL
- STORAGE



FIFTH FLOOR PLAN- AREA -

- RETAIL
- GREEN SPACE
- CORE
- ELEMENT OF WATER



SEVENTH FLOOR PLAN- AREA -

- CO WORKING SPACE
- CORE
- ELEMENT OF WATER
- KITCHEN
- CAFETERIA



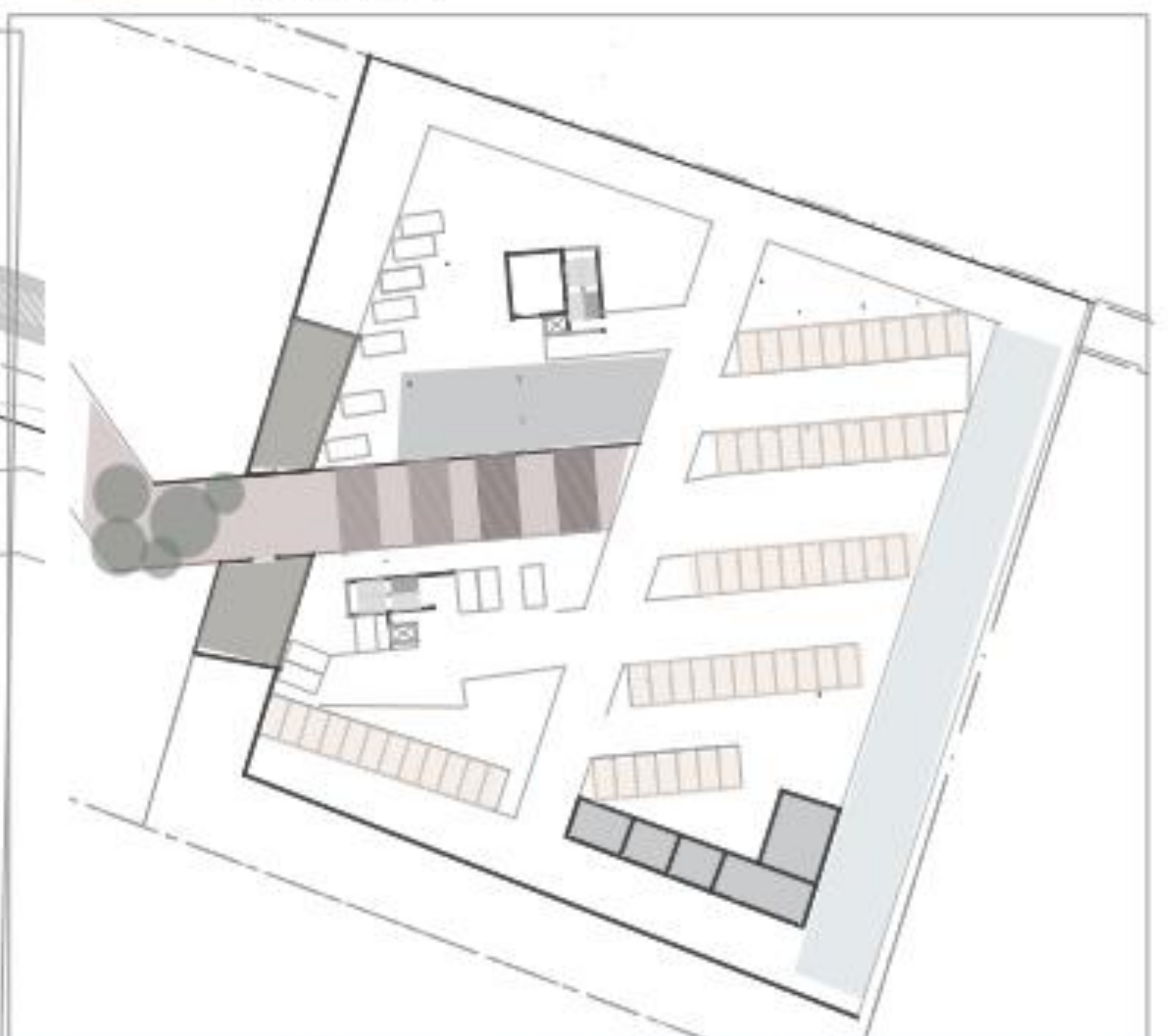
SIXTH FLOOR PLAN- AREA -

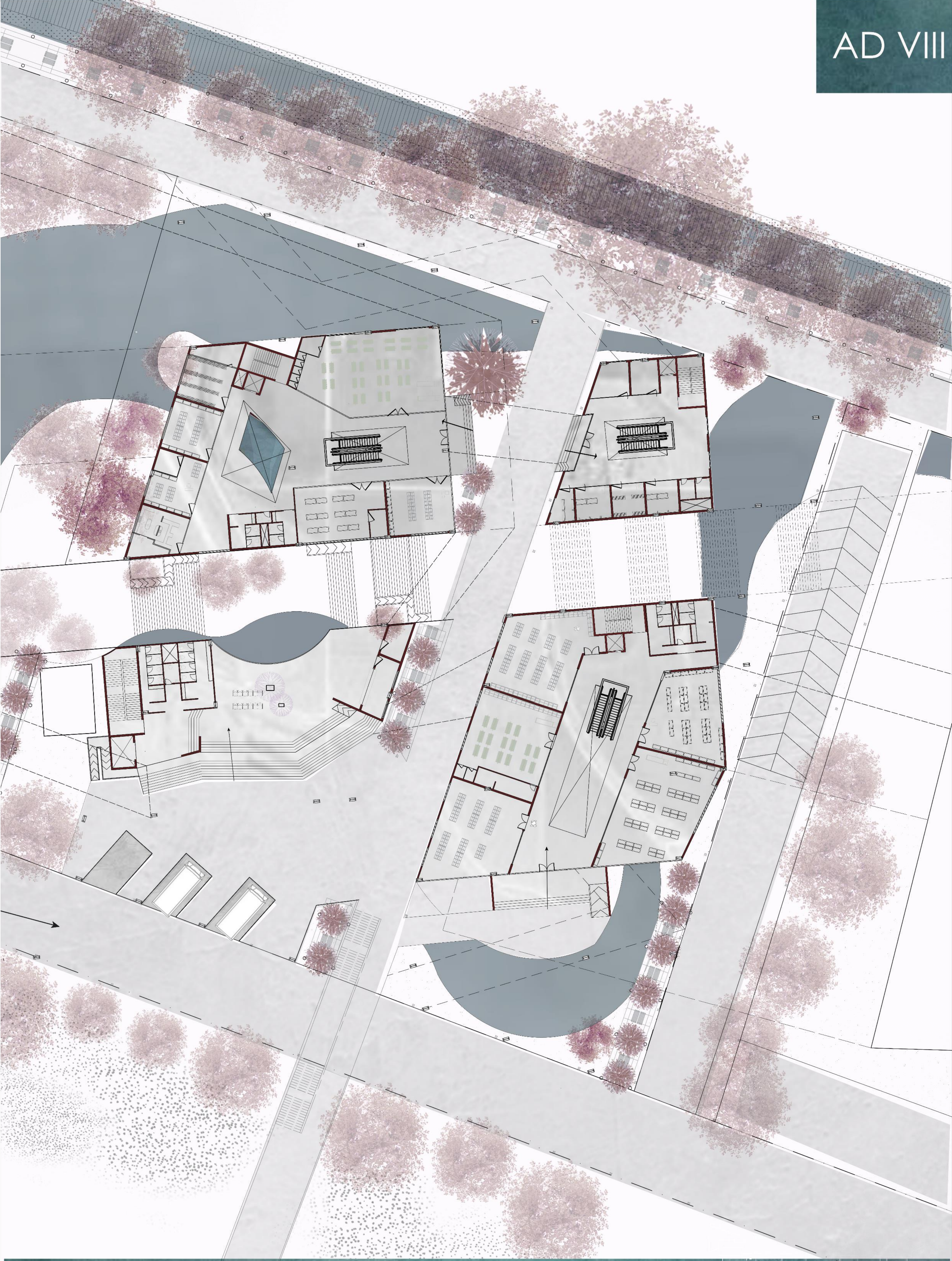
- RETAIL
- GREEN SPACE
- CORE
- ELEMENT OF WATER



BASEMENT FLOOR PLAN-

- GATHERING SPACE
- AREA OF EXHIBIT
- SERVICES
- CAR PARKING

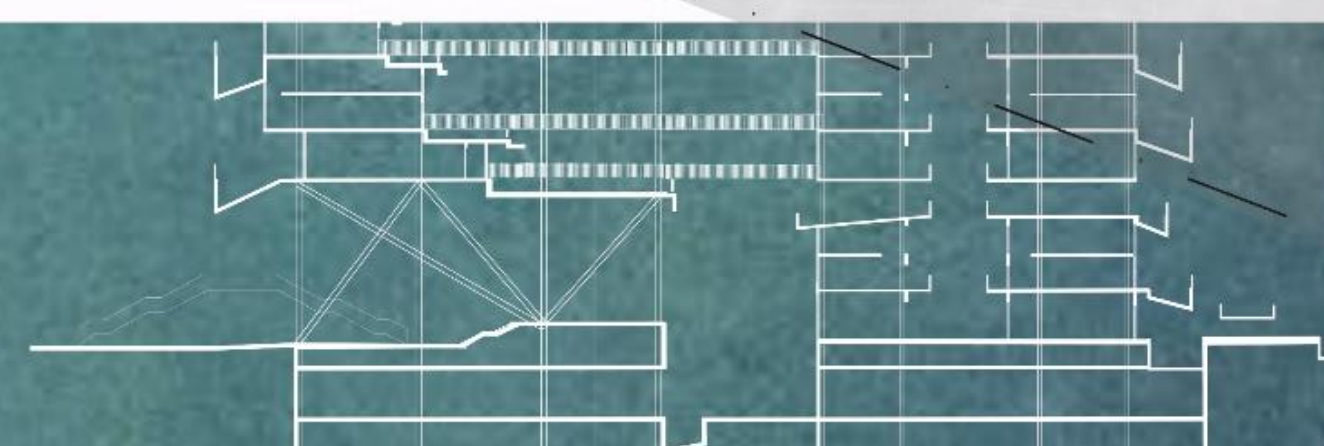


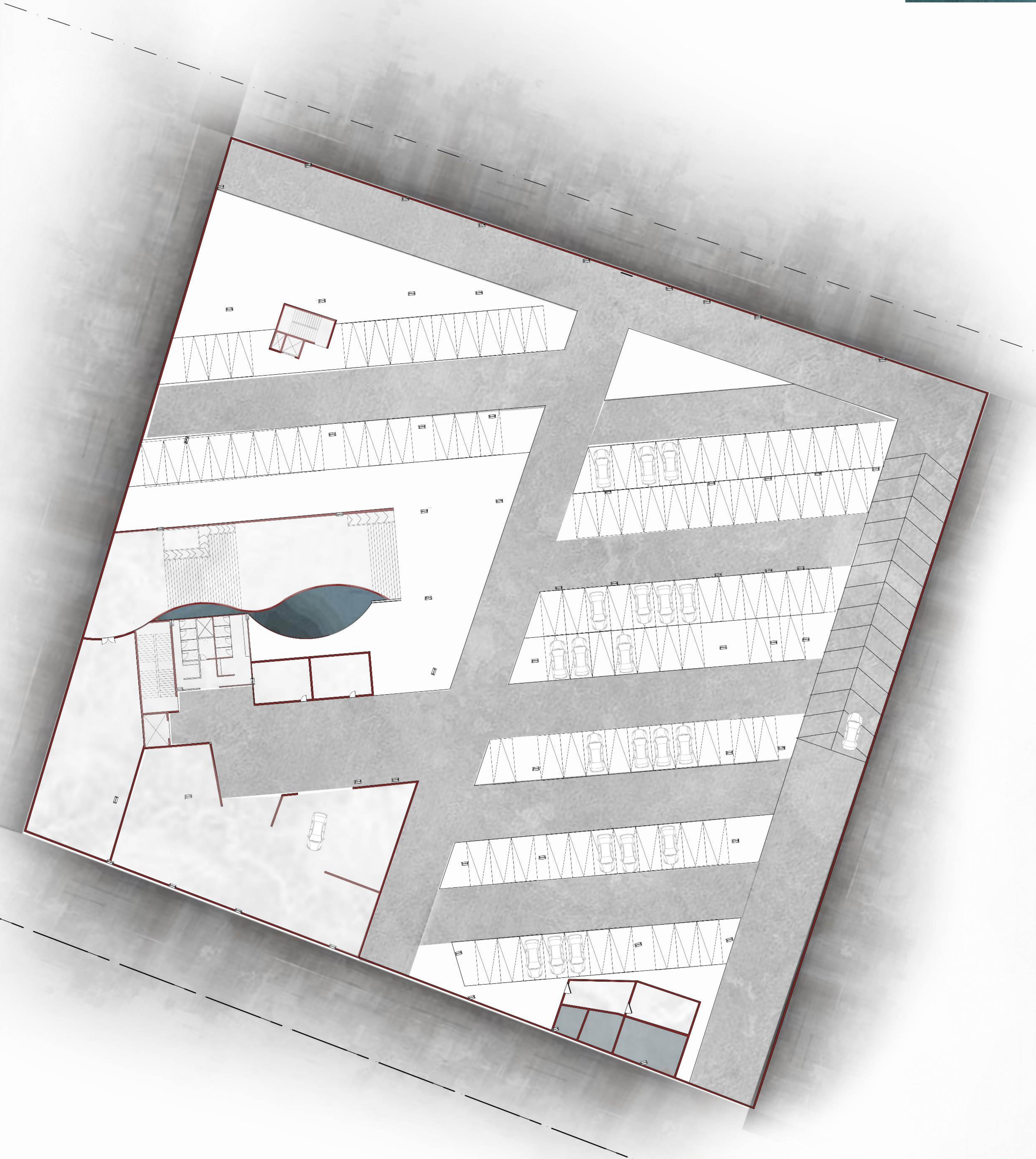


GROUND FLOOR PLAN



CHUMKI MANDAL
1RW20AT018



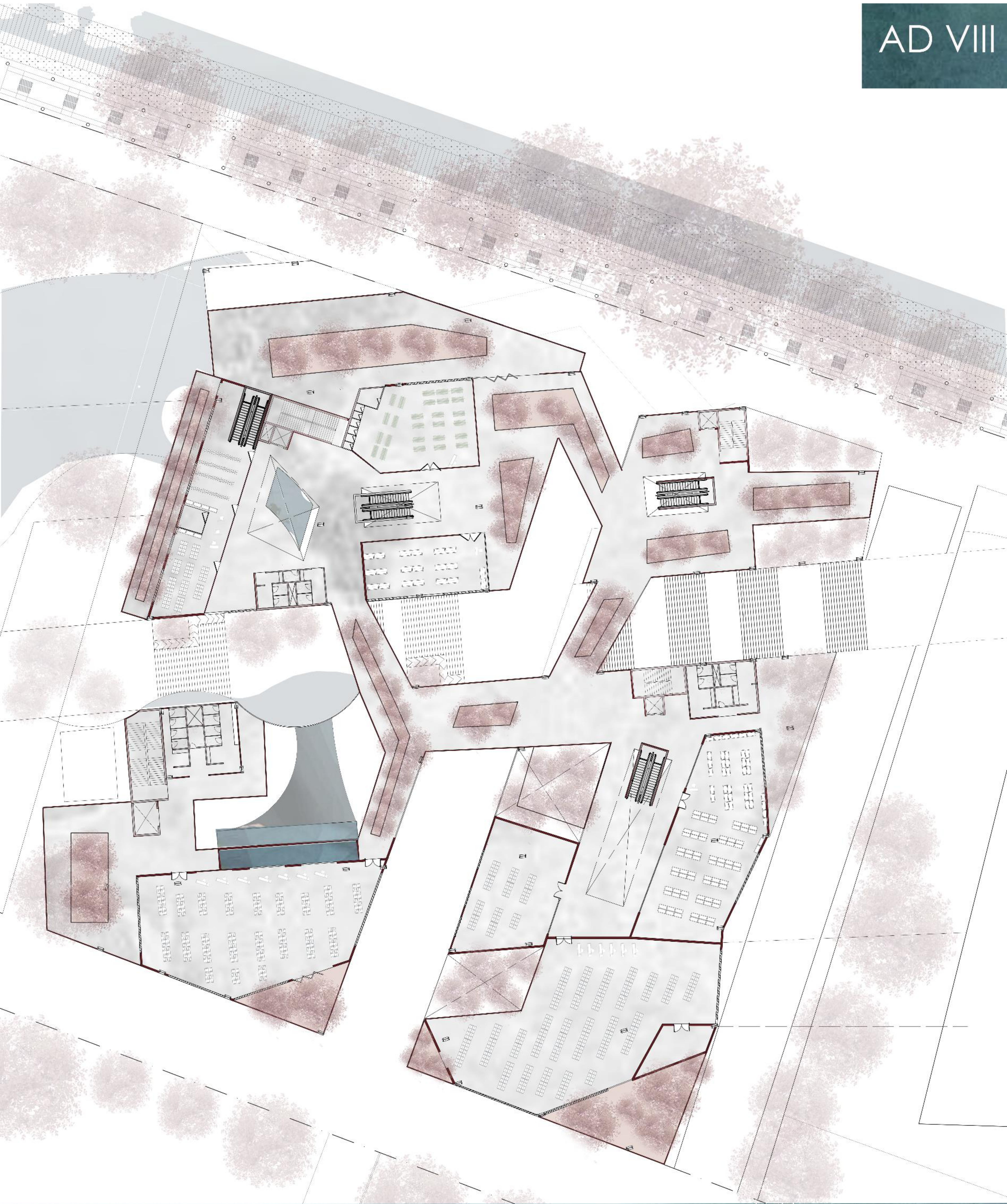


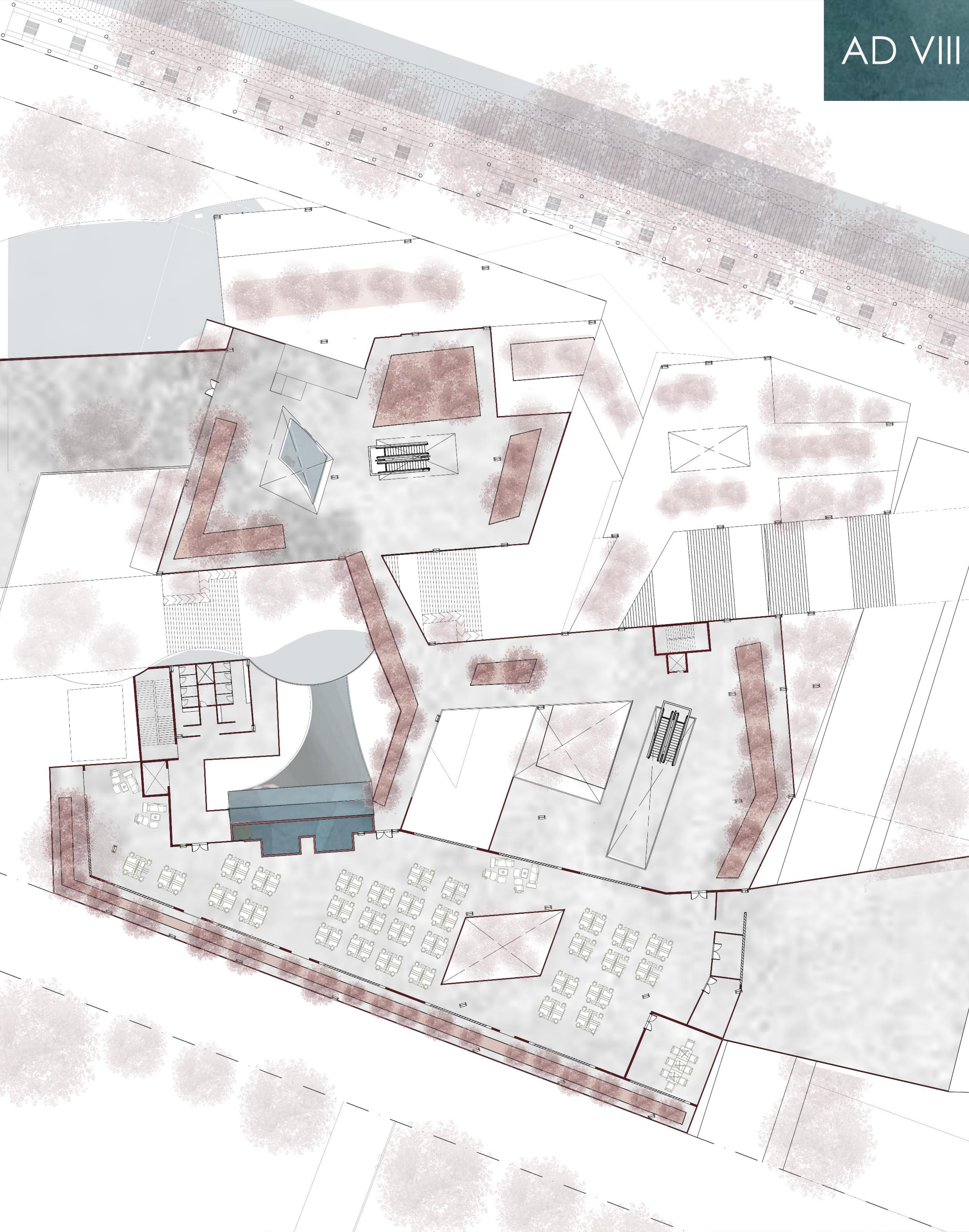
BASEMENT FLOOR PLAN 
CHUMKI MANDAL
1RW20AT018









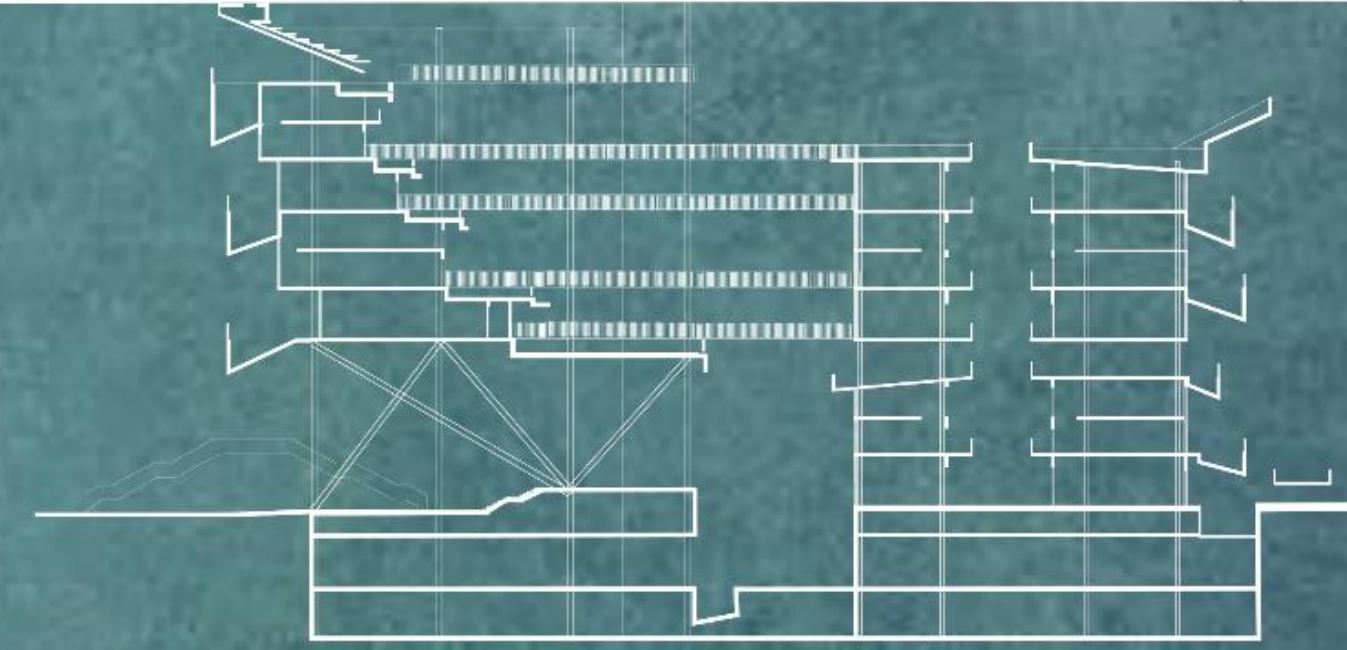


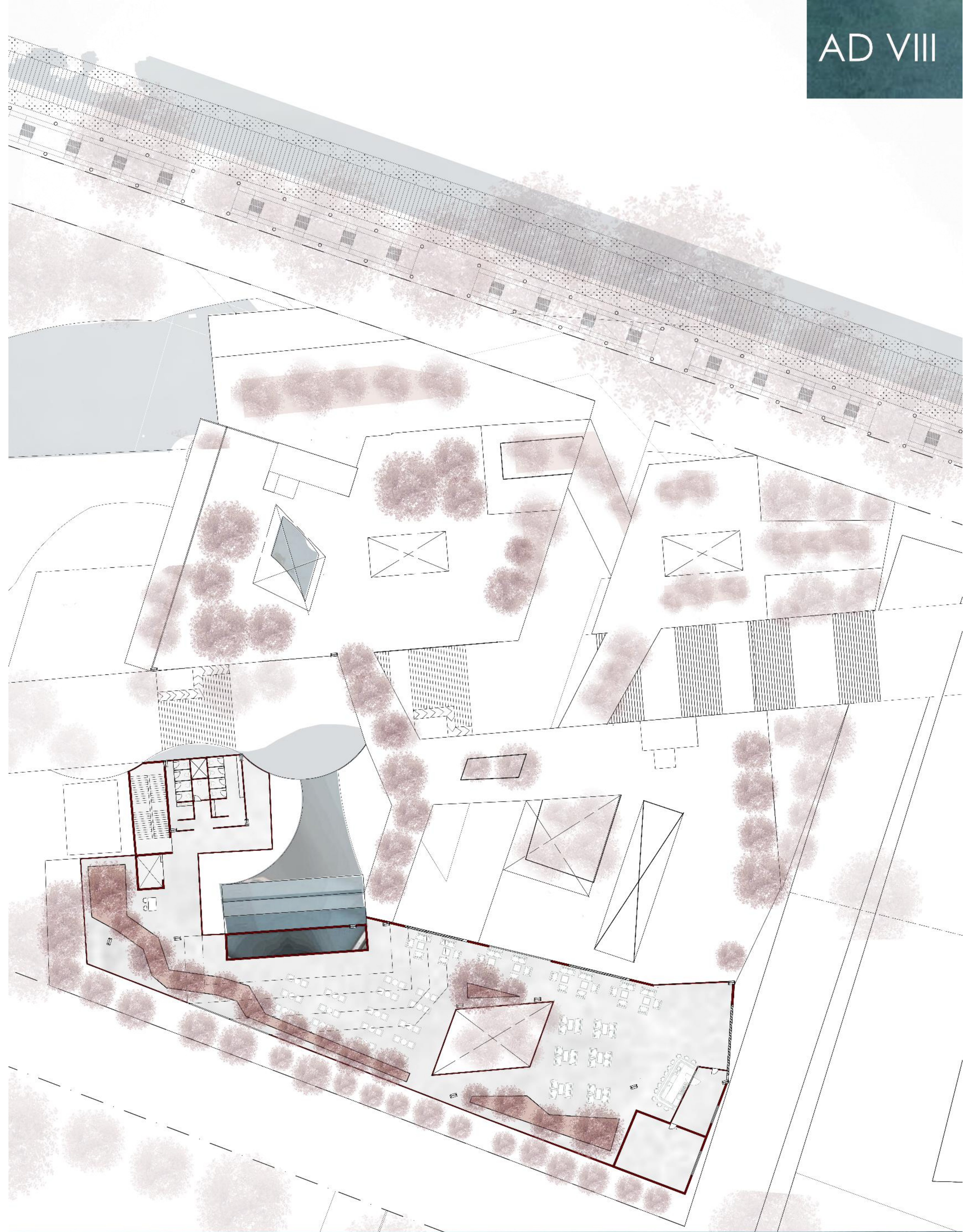
FIFTH FLOOR PLAN

CHUMKI MANDAL
1RW20AT018



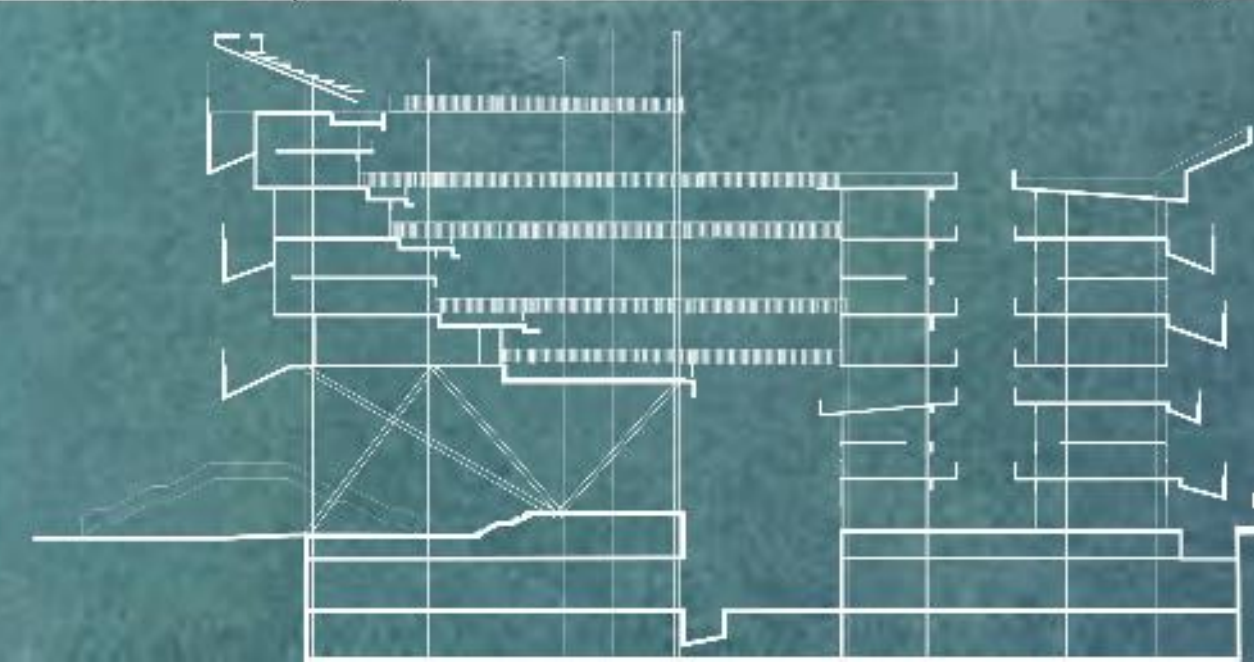
0 5 10 15 20

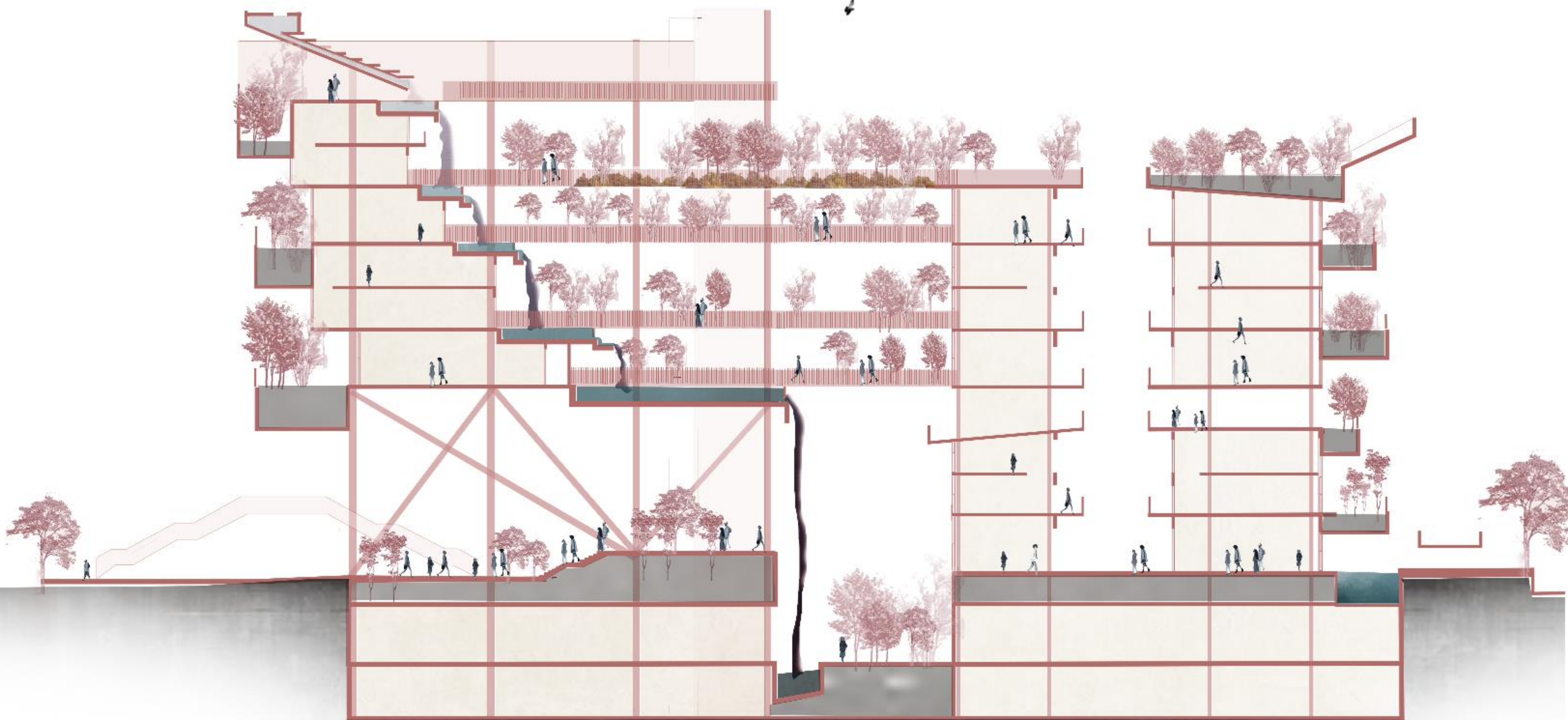




SIXTH FLOOR PLAN

CHUMKI MANDAL
1RW20AT018





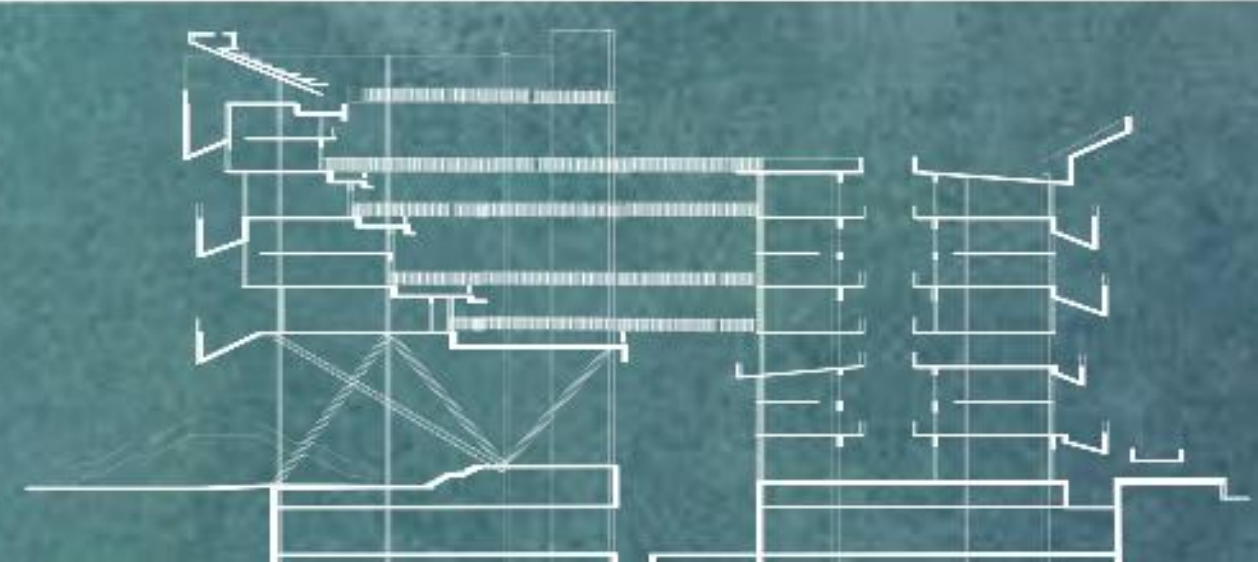
SECTION ON AA



SECTION ON 11

SECTIONS ----

CHUMKI MANDAL
1RW20AT018



ENVISAGING A RAIN FOREST TO CHANGE THE MICRO CLIMATE

1. Selecting the Right Plants

Choose a mix of trees, shrubs, and ground cover plants that thrive in humid, shaded conditions.

- Small Trees and Tall Shrubs:

- Dwarf Banana (Musa spp.)
- Dwarf Papaya (Carica papaya)
- Areca Palm (Dyopsis lutescens)
- Fiddle Leaf Fig (Ficus lyrata)

- Medium Shrubs and Large Foliage Plants:

- Philodendron
- Bird of Paradise (Strelitzia reginae)
- Monstera deliciosa
- Dracaena

- Vines and Climbers:

- Pothos (Epipremnum aureum)
- Passionflower (Passiflora spp.)
- Bougainvillea (for some color)

Ground Cover and Small Plants:

- Ferns (e.g., Boston Fern, Asparagus Fern)
- Bromeliads
- Spider Plant (Chlorophytum comosum)
- Peace Lily (Spathiphyllum)

2. Creating the Microclimate

To replicate rainforest conditions, focus on humidity, watering, and shade:

- **Humidity:** Use a misting system or place humidifiers around the terrace. Grouping plants closely together will also help maintain humidity.

- **Watering:** Ensure consistent moisture by using self-watering pots or drip irrigation systems. Avoid waterlogging by ensuring good drainage.

- **Shade:** Provide partial to full shade with shade cloths, pergolas, or strategically placing taller plants to create a canopy effect.

3. Soil and Fertilization

- Use rich, well-draining soil with plenty of organic matter.

- Regularly fertilize with a balanced, slow-release fertilizer suitable for tropical plants.

4. Additional Elements

- **Water Features:** Small fountains or water bowls can increase humidity and add to the ambiance.

- **Mulch:** Use organic mulch to retain soil moisture and keep roots cool.
- **Decor:** Add natural elements like rocks, driftwood, and moss to enhance the rainforest feel.

5. Maintenance

- Regularly prune and trim plants to maintain a balanced and healthy growth.

- Monitor for pests and diseases, common in humid environments, and manage them organically if possible.

TREES ARE OF SHORTER HEIGHT (USED IN BALCONIES)

1. Coral Tree (Erythrina variegata)
 - Height: 5-10 meters
 - Spread: 4-8 meters



2. Drumstick Tree (Moringa oleifera)
 - Height: 5-10 meters
 - Spread: 3-5 meters



3. Golden Shower Tree (Cassia fistula)
 - Height: 6-10 meters
 - Spread: 4-6 meters



4. Guava Tree (Psidium guajava)
 - Height: 3-10 meters
 - Spread: 3-5 meters



5. Pomegranate Tree (Punica granatum)
 - Height: 3-6 meters
 - Spread: 3-5 meters



TREES THAT CHANGE THE TROPICAL CLIMATE (USED IN THE GROUND)

1. Indian Rosewood (Dalbergia latifolia)
 - Height: 20-25 meters
 - Spread: 8-10 meters



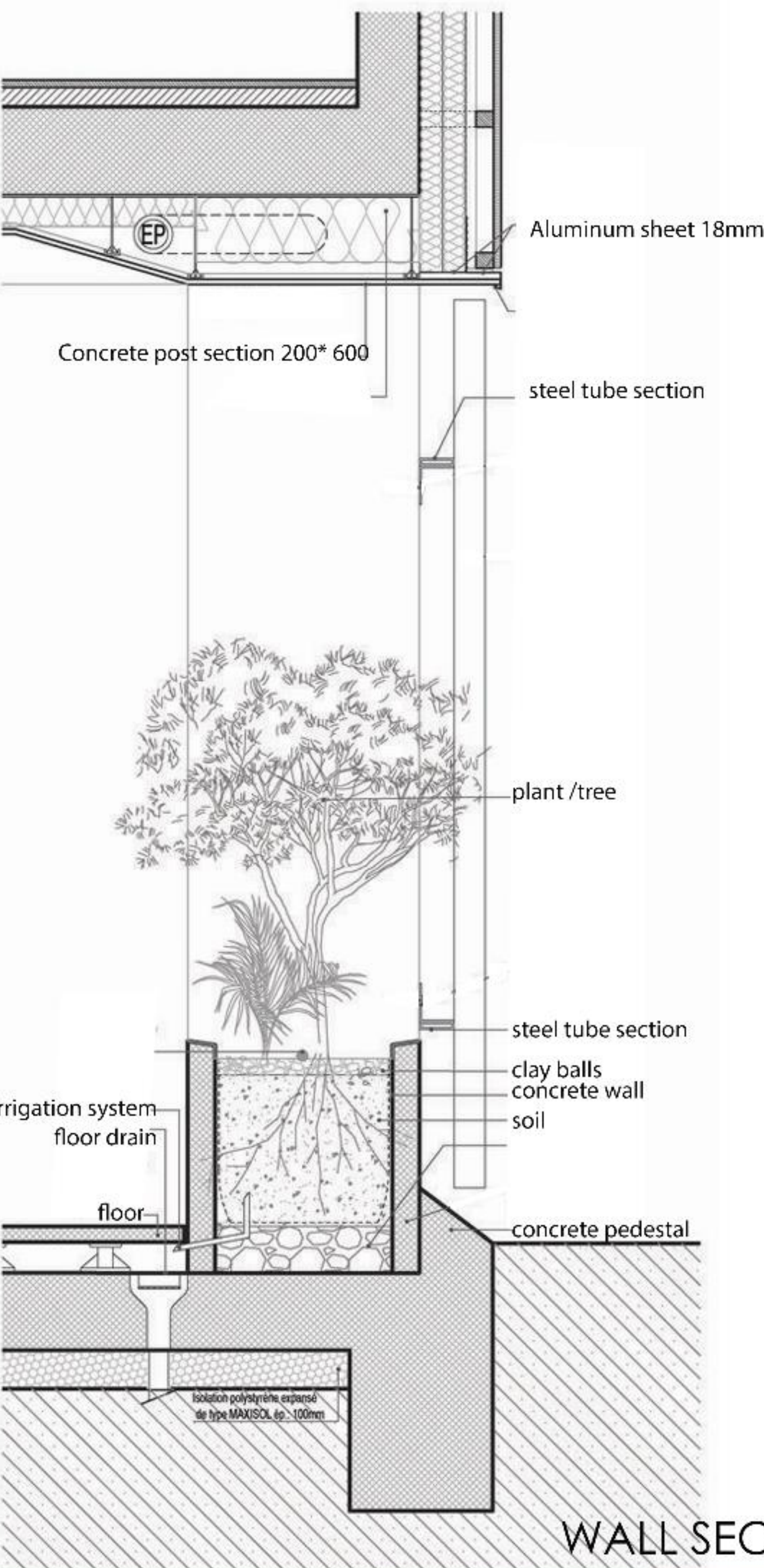
2. Peepal Tree (Ficus religiosa)
 - Height: 15-25 meters
 - Spread: 8-10 meters



3. Neem Tree (Azadirachta indica)
 - Height: 15-20 meters
 - Spread: 10-12 meters

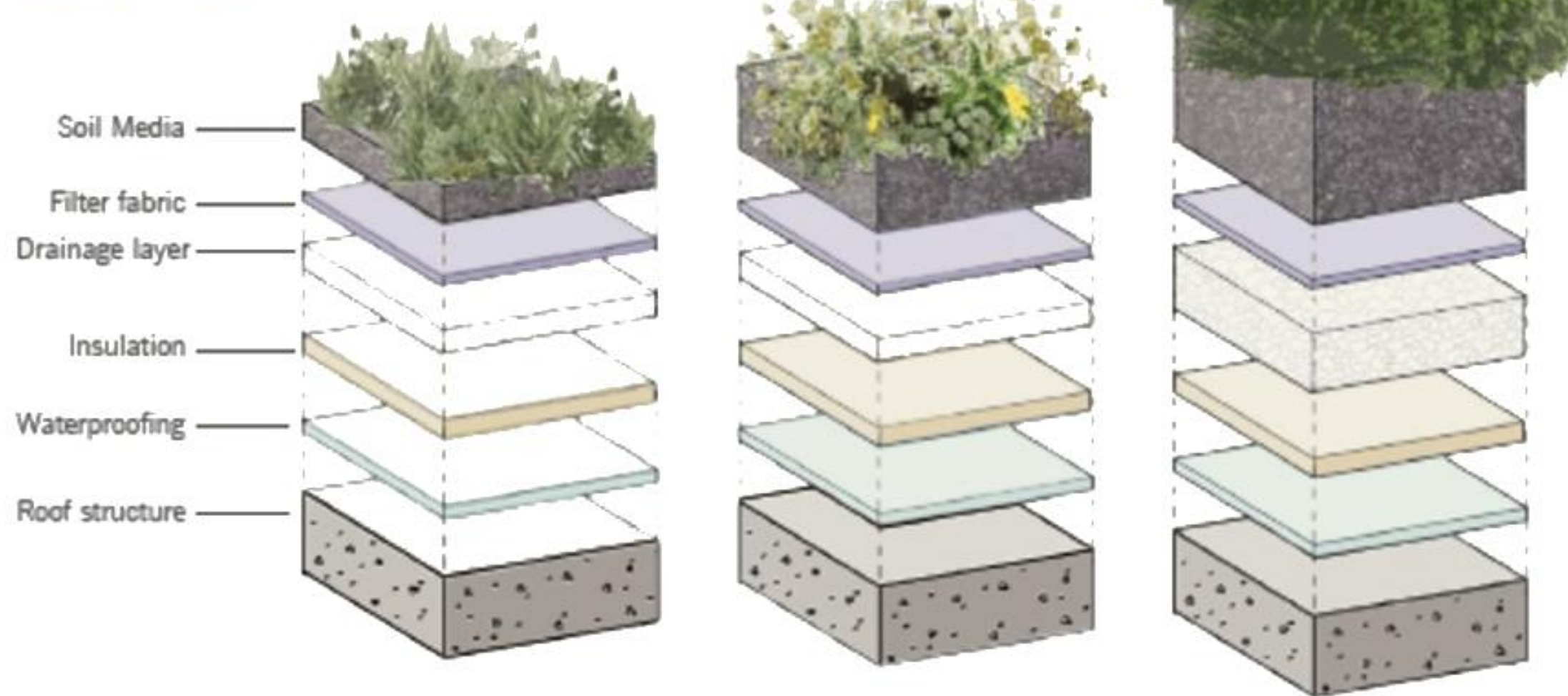


4. Jackfruit Tree (Artocarpus heterophyllus)
 - Height: 8-25 meters
 - Spread: 8-10 meters

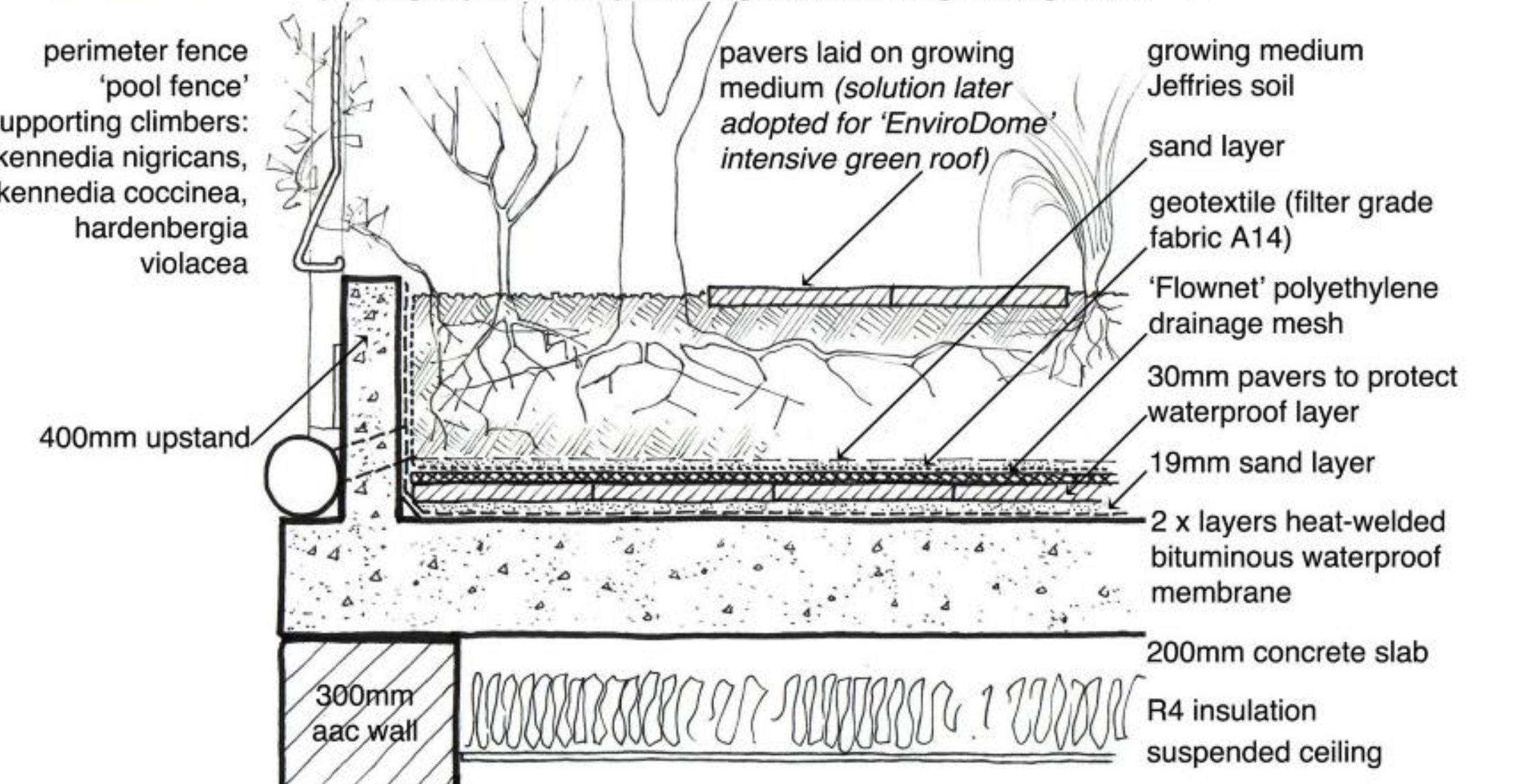


LIVING ROOF TYPES

LAYERS (TYPICAL)

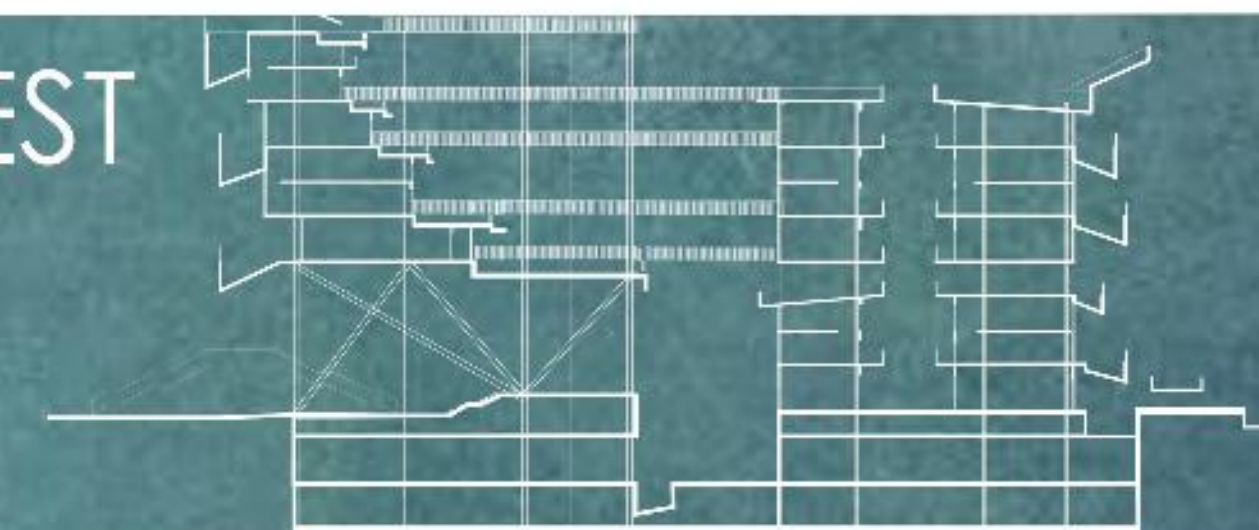


	EXTENSIVE	SEMI-INTENSIVE	INTENSIVE
Soil Depth:	4 to 6 inches	6 to 12 inches	8 to 24+ inches
Plant Palette:	Low diversity, mainly succulents	Greater diversity, perennials	Perennials, shrubs and trees
Maintenance:	Minimal	Varies	Higher



STUDY AND DETAIL ABOUT THE IDEA OF RAINFOREST

CHUMKI MANDAL
1RW20AT018

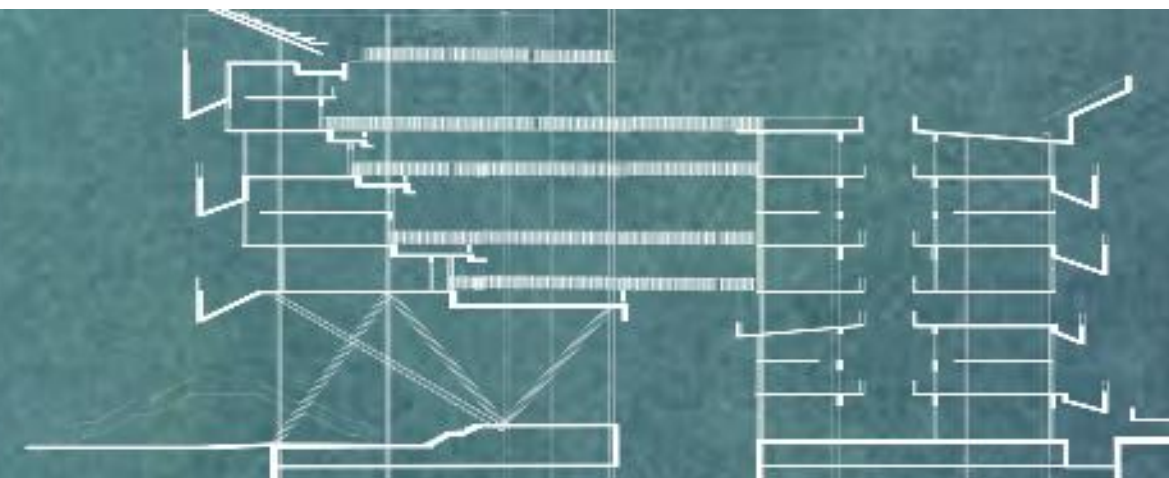




MODEL PICTURES

CHUMKI MANDAL

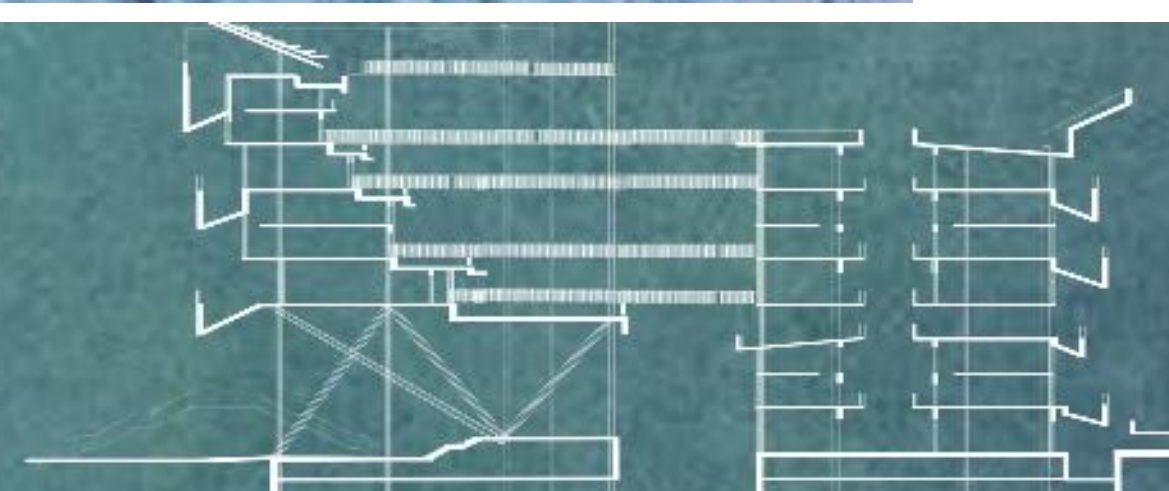
1RW20AT018





MODEL PICTURES

CHUMKI MANDAL
1RW20AT018





MODEL PICTURES

CHUMKI MANDAL
1RW20AT018

